



Imaged Document Cover Sheet

The document following this cover sheet is an imaged document supplied by LANDATA®, Secure Electronic Registries Victoria.

Document Type	Plan
Document Identification	LP043430
Number of Pages (excluding this cover sheet)	1
Document Assembled	03/09/2024 10:37

Copyright and disclaimer notice:

© State of Victoria. This publication is copyright. No part may be reproduced by any process except in accordance with the provisions of the Copyright Act 1968 (Cth) and for the purposes of Section 32 of the Sale of Land Act 1962 or pursuant to a written agreement. The information is only valid at the time and in the form obtained from the LANDATA® System. None of the State of Victoria, LANDATA®, Secure Electronic Registries Victoria Pty Ltd (ABN 86 627 986 396) as trustee for the Secure Electronic Registries Victoria Trust (ABN 83 206 746 897) accept responsibility for any subsequent release, publication or reproduction of the information.

The document is invalid if this cover sheet is removed or altered.

PLAN OF SUBDIVISION OF
PART OF CROWN PORTION 123

LP 43430

EDITION 1

PLAN MAY BE LODGED 13.8.58

PARISH OF JIKA JIKA

COUNTY OF BOURKE

Scale: feet to an inch

V. 8051 F. 943

COLOUR CONVERSION

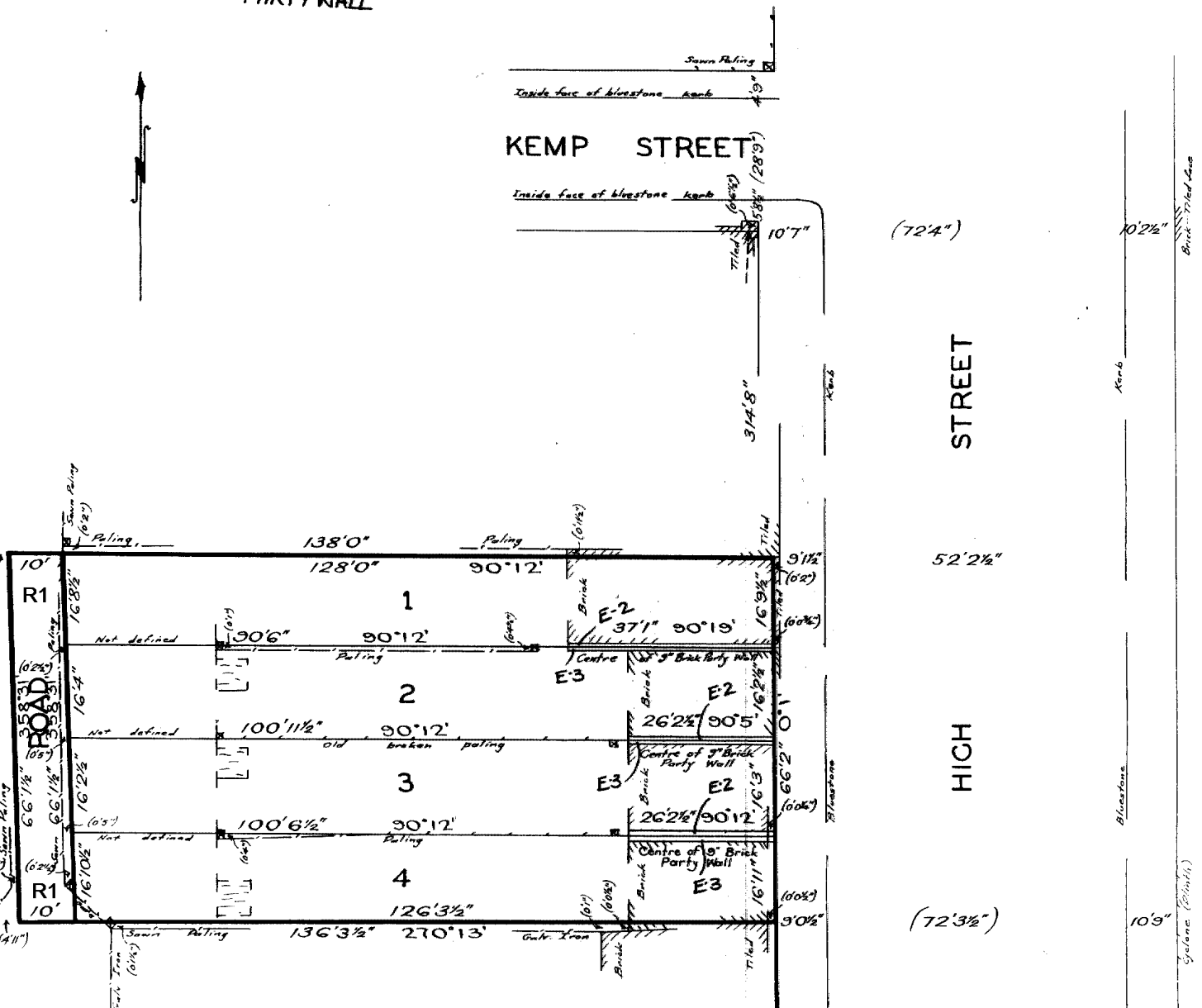
R1=BROWN

E-2=GREEN

E-3=YELLOW

THE LAND COLOURED BROWN
IS APPROPRIATED
OR SET APART FOR
EASEMENTS OF WAY AND DRAINAGE

THE LAND COLOURED YELLOW AND GREEN
IS APPROPRIATED
OR SET APART FOR
EASEMENTS OF PARTY WALL



Darebin City Council Received 03/09/2024

WARNING: THE IMAGE OF THIS DOCUMENT OF THE REGISTER HAS BEEN DIGITALLY AMENDED.
NO FURTHER AMENDMENTS ARE TO BE MADE TO THE ORIGINAL DOCUMENT OF THE REGISTER.