



Imaged Document Cover Sheet

The document following this cover sheet is an imaged document supplied by LANDATA®, Secure Electronic Registries Victoria.

Document Type	Plan
Document Identification	LP071049
Number of Pages (excluding this cover sheet)	2
Document Assembled	05/09/2024 14:36

Copyright and disclaimer notice:

© State of Victoria. This publication is copyright. No part may be reproduced by any process except in accordance with the provisions of the Copyright Act 1968 (Cth) and for the purposes of Section 32 of the Sale of Land Act 1962 or pursuant to a written agreement. The information is only valid at the time and in the form obtained from the LANDATA® System. None of the State of Victoria, LANDATA®, Secure Electronic Registries Victoria Pty Ltd (ABN 86 627 986 396) as trustee for the Secure Electronic Registries Victoria Trust (ABN 83 206 746 897) accept responsibility for any subsequent release, publication or reproduction of the information.

The document is invalid if this cover sheet is removed or altered.

LP71049
EDITION 1
APPROVED 19/11/1966

PLAN OF SUBDIVISION OF
PART OF CROWN ALLOTMENT 2 SECTION 2

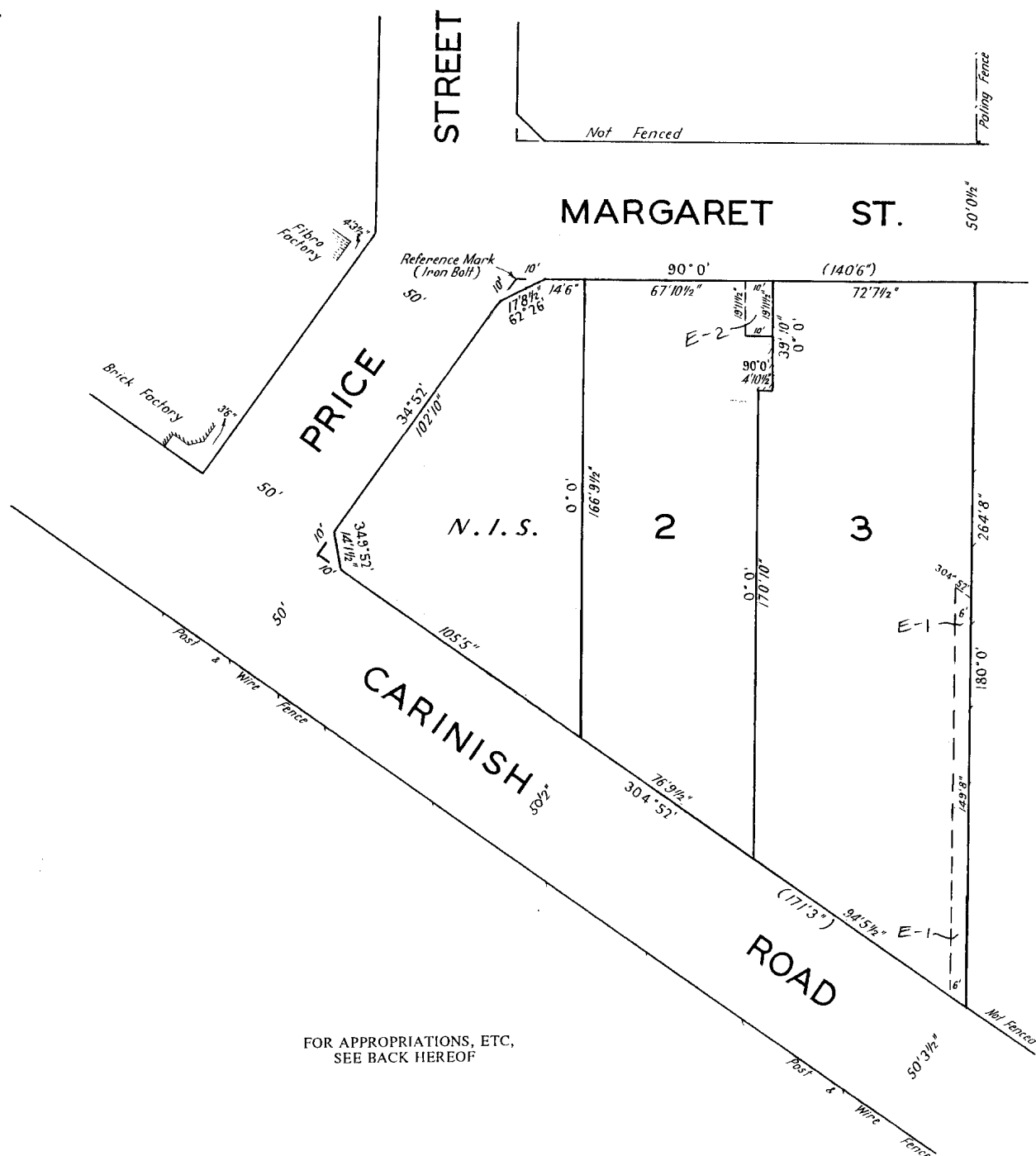
PARISH OF MORDIALLOC

COUNTY OF BOURKE

SCALE OF FEET
40 0 40 80

*The land colored blue is set apart for drainage & sewerage purposes
The land colored green is set apart for the supply of electricity*

COLOUR CONVERSION
E-1=BLUE
E-2=GREEN



FOR APPROPRIATIONS, ETC.,
SEE BACK HEREOF

CERTIFICATE OF TITLE V. 8566 F. 581
LODGED BY DAVIES CAMPBELL & CO.
DATE 19.10.65
DECLARED BY J. W. McQUE 29.6.65
CONSENT OF COUNCIL CITY OF OAKLEIGH
28.9.65
PLAN APPROVED DATE 19.1.66 TIME 3.10.

LP 71049
BACK OF SHEET 1

THE LAND COLOURED BLUE
IS APPROPRIATED
OR SET APART FOR
EASEMENTS OF DRAINAGE & SEWERAGE.

THE LAND COLOURED GREEN
IS APPROPRIATED
OR SET APART FOR
SUPPLY OF ELECTRICITY.