

- WARNING -
CONTRACTOR TO VERIFY LOCATION, DEPTH/CLEARANCE AND ALIGNMENT OF OVERHEAD AND UNDERGROUND SERVICES. CONTRACTOR TO ACQUIRE CURRENT AND RELEVANT 'DIAL BEFORE YOU DIG' ONE CALL SERVICES DRAWINGS AND ADHERE TO ALL REQUIREMENTS FOR WORKS NEAR SERVICES INCLUDING CLEARANCES, EASEMENTS AND INFORMING SERVICE AUTHORITIES PRIOR TO COMMENCEMENT OF WORKS. THE LOCATIONS OF UNDERGROUND SERVICES INDICATED IN THIS SET OF DRAWINGS ARE INDICATIVE ONLY. PIT LOCATIONS HAVE BEEN SURVEYED BY A LICENSED SURVEYOR.

- SITE DIMENSIONS -
CONTRACTOR TO SATISFY THEMSELVES OF SITE CONDITIONS, CHANGES IN LEVEL AND DIMENSIONS PRIOR TO FABRICATION OF SITE SPECIFIC ITEMS OR PRIOR TO ORDERING/PURCHASING MATERIALS. WHERE DISCREPANCIES EXIST BETWEEN DRAWINGS AND SITE CONDITIONS CONTRACTOR TO NOTIFY SUPERINTENDENT PRIOR TO COMMENCEMENT OF WORKS.

- COPYRIGHT AND INTELLECTUAL PROPERTY RIGHTS -
ENLOCUS RETAINS THE INTELLECTUAL PROPERTY RIGHT IN RELATION TO THE CONTRACT MATERIAL. THE DESIGN AS REPRESENTED BY THE DRAWING SET AND ALL DETAILS, INGENUITY AND INNOVATION REMAIN THE PROPERTY OF ENLOCUS. REFER TO CONTRACT FOR IRREVOCABLE LICENSE GRANTED TO THE CLIENT AND COPYRIGHT ARRANGEMENT. © ENLOCUS 2025

DRAWING STATUS:

DD ISSUE
NOT FOR CONSTRUCTION

REVISION STATUS:

B	Design Development	04.02.25
A	Design Development - Consultant Issue	17.01.25

LANDSCAPE ARCHITECT CONSULTANT:

enlocus
ENLOCUS
Level 1, 151 St Georges Rd,
Fitzroy North, Victoria 3066
T : 03 9482 2202
W: www.enlocus.com

CONSULTANTS:

NOTES / LEGEND:

Bayside City Council
Planning Environment Act 1987
ADVERTISED PLAN
Planning Application No: 5/2025/93/1
Date: 09/07/25

CLIENT NAME:

BAYSIDE CITY COUNCIL
76 Royal Avenue, Sandringham,
VIC 3191

PROJECT NAME:

HAMPTON FORESHORE PRECINCT
Beach Rd, Sandringham, VIC 3191

DRAWING TITLE:

Planting Key Plan - S1

SCALE:	1:100	DATE OF ISSUE:	07.02.2025
FORMAT / SIZE:	A1	REFERENCE NO:	2411
DESIGN REVIEW:	SB	APPROVAL:	MF

DRAWING NUMBER: REVISION:

2411_LD 107 **B**

PLANTING SCHEDULE

Code	Botanical Name	Common Name	Height	Width	Spacing	% of Mix	QTY	SIZE
AREA 01 MIX								
Ca	<i>Cryocephalum apiculatum</i>	Yellow Buttons	400	500	500	15%	284	150MM
Pp	<i>Poa poiformis</i> ' PP500'	Tussock Grass	400	450	450	60%	1401	150MM
Dc	<i>Disphyma crassifolia</i>	Rounded Noonflower	200	500	500	25%	473	150MM
AREA 02 MIX								
Cr	<i>Carprobotrus rossii</i>	Pigface/Karkalla	200	1500	500	20%	132	150MM
Pp	<i>Poa poiformis</i> ' PP500'	Tussock Grass	400	450	450	65%	530	150MM
AREA 03 MIX								
Al	<i>Acacia longifolia subsp. Sophorae.</i>	Coast wattle	1500	4000	1000	5%	42	150MM
Ac	<i>Atriplex cinerea</i>	Coastal Saltbush	1500	1500	500	20%	666	150MM
Cr	<i>Carprobotrus rossii</i>	Pigface/Karkalla	200	1500	500	10%	333	150MM
Dc	<i>Disphyma crassifolia</i>	Rounded noon-flower	200	500	500	20%	666	150MM
Dd	<i>Distichlis distichophylla</i>	Australian salt-grass	300	600	400	10%	520	150MM
Mi	<i>Myoproum insulare.</i>	Common boobialla	3500	2000	1000	5%	42	150MM
Pl	<i>Poa labillardierei</i>	Common Tussock-grass	800	800	500	10%	166	150MM
Rc	<i>Rhagodia candolleana</i>	Seaberry saltbush	2000	2000	1000	30%	250	150MM
AREA 04 MIX								
Ac	<i>Atriplex cinerea</i>	Coastal Saltbush	1500	1500	500	20%	84	150MM
Cr	<i>Carprobotrus rossii</i>	Pigface/Karkalla	200	1500	500	10%	42	150MM
Dc	<i>Disphyma crassifolia</i>	Rounded noon-flower	200	500	500	20%	84	150MM
Dd	<i>Distichlis distichophylla</i>	Australian salt-grass	300	600	400	10%	66	150MM
Mi	<i>Myoproum insulare.</i>	Common boobialla	3500	2000	1000	5%	5	150MM
Pl	<i>Poa labillardierei</i>	Common Tussock-grass	800	800	500	10%	21	150MM
Rc	<i>Rhagodia candolleana</i>	Seaberry saltbush	2000	2000	1000	25%	26	150MM
TREE								
Bi	<i>Banksia integrifolia</i>	Coast banksia	6000	3000	AS SHOWN		10	90L



-WARNING -
CONTRACTOR TO VERIFY LOCATION, DEPTH/CLEARANCE AND ALIGNMENT OF OVERHEAD AND UNDERGROUND SERVICES. CONTRACTOR TO ACQUIRE CURRENT AND RELEVANT 'DIAL BEFORE YOU DIG'ONE CALL' SERVICES DRAWINGS AND ADHERE TO ALL REQUIREMENTS FOR WORKS NEAR SERVICES INCLUDING CLEARANCES, EASEMENTS AND INFORMING SERVICE AUTHORITIES PRIOR TO COMMENCEMENT OF WORKS. THE LOCATIONS OF UNDERGROUND SERVICES INDICATED IN THIS SET OF DRAWINGS ARE INDICATIVE ONLY. PIT LOCATIONS HAVE BEEN SURVEYED BY A LICENSED SURVEYOR.

- SITE DIMENSIONS -
CONTRACTOR TO SATISFY THEMSELVES OF SITE CONDITIONS, CHANGES IN LEVEL AND DIMENSIONS PRIOR TO FABRICATION OF SITE SPECIFIC ITEMS OR PRIOR TO ORDERING/PURCHASING MATERIALS. WHERE DISCREPANCIES EXIST BETWEEN DRAWINGS AND SITE CONDITIONS CONTRACTOR TO NOTIFY SUPERINTENDENT PRIOR TO COMMENCEMENT OF WORKS.

- COPYRIGHT AND INTELLECTUAL PROPERTY RIGHTS -
ENLOCUS RETAINS THE INTELLECTUAL PROPERTY RIGHT IN RELATION TO THE CONTRACT MATERIAL. THE DESIGN AS REPRESENTED BY THE DRAWING SET AND ALL DETAILS, INGENUITY AND INNOVATION REMAIN THE PROPERTY OF ENLOCUS. REFER TO CONTRACT FOR IRREVOCABLE LICENSE GRANTED TO THE CLIENT AND COPYRIGHT ARRANGEMENT. © ENLOCUS 2025

DRAWING STATUS:

DD ISSUE
NOT FOR CONSTRUCTION

REVISION STATUS:

B Design Development 04.02.25
A Design Development - Consultant Issue 17.01.25

LANDSCAPE ARCHITECT CONSULTANT:

enlocus
ENLOCUS
Level 1, 151 St Georges Rd,
Fitzroy North, Victoria 3066
T : 03 9482 2202
W: www.enlocus.com

CONSULTANTS:

NOTES / LEGEND:

PLANTING NOTES:

- CONTRACTOR TO VERIFY LOCATION, DEPTH/CLEARANCE AND ALIGNMENT OF ALL OVERHEAD AND UNDERGROUND SERVICES INDICATED ON CURRENT AND RELEVANT 'DIAL BEFORE YOU DIG'ONE CALL' SERVICES DRAWINGS CONTRACTOR TO REQUEST ADDITIONAL SERVICES RECORDS FROM COUNCIL WHERE SERVICES ACCESS PITTS, LIGHT POLES, METRES/VALVES ETC EXIST ON SITE CONTRACTOR TO ASSUME GENERAL ALIGNMENT OF UNDERGROUND PIPES, CONDUITS, CABLES ETC AND VERIFY ALIGNMENT AND MARK ON SITE PRIOR TO COMMENCEMENT OF WORKS.
- LICENSED SURVEYOR TO BE USED TO LOCATE HEIGHT DATUM & SET OUT POINT AS SHOWN ON DRAWINGS PRIOR TO COMMENCEMENT OF WORKS. CONTRACTOR TO INFORM SUPERINTENDENT OF ANY DISCREPANCIES PRIOR TO COMMENCING WORKS.
- STOCK PILED SITE TOPSOIL TO BE USED WHERE APPROVED BY SUPERINTENDENT. STOCK PILED TOPSOIL TO BE CLEARED OF VEGETATIVE MATTER AND DEBRIS.

PLANT SCHEDULE:

SYMBOL	PROPOSED TREES. REFER TO PLANTING SCHEDULE AND LD400_A	QTY.
	PM01 MIXED PLANT SPECIES. REFER TO LD400_B AND SPECIFICATION.	473 SOM
	PM02 MIXED PLANT SPECIES. REFER TO LD400_B AND SPECIFICATION.	165 SOM
	PM03 MIXED PLANT SPECIES. REFER TO LD400_B AND SPECIFICATION.	832 SOM
	G01 KUKUVI SEED BLEND ROLLED TURF. REFER TO DETAIL CD400_D AND SPECIFICATION.	331 SOM

Bayside City Council
Planning Environment Act 1987
ADVERTISED PLAN
Planning Application No: 5/2025/93/1
Date: 09/07/25

CLIENT NAME:

BAYSIDE CITY COUNCIL
76 Royal Avenue, Sandringham,
VIC 3191

PROJECT NAME:

HAMPTON FORESHORE PRECINCT
Beach Rd, Sandringham, VIC 3191

DRAWING TITLE:

Planting Plan A - S1

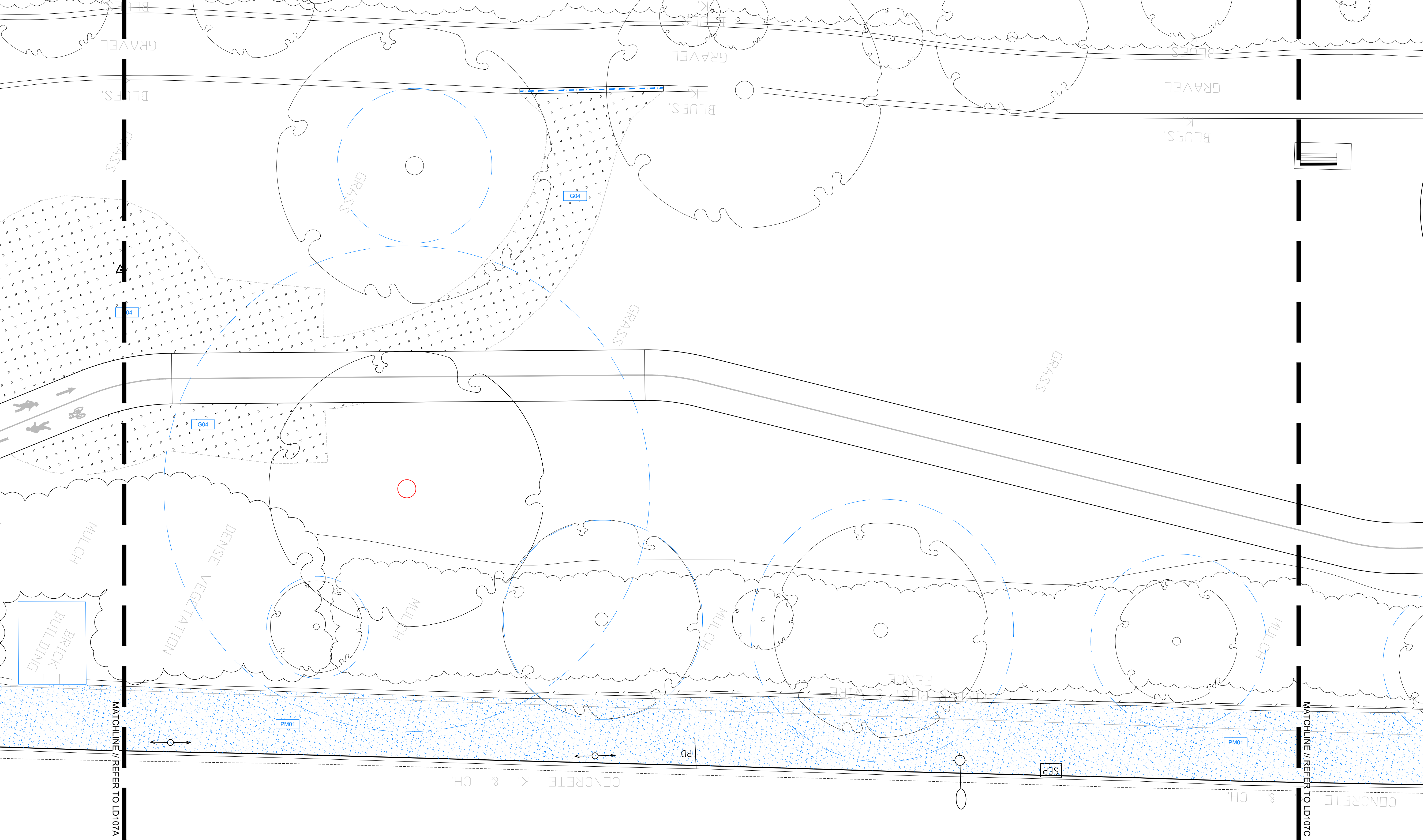
SCALE: 1:100 DATE OF ISSUE: 07.02.2025
FORMAT / SIZE: A1 REFERENCE NO: 2411
DESIGN REVIEW: SB APPROVAL: MF

DRAWING NUMBER: REVISION:

2411_LD 107A B

PLANTING SCHEDULE

Code	Botanical Name	Common Name	Height	Width	Spacing	% of Mix	QTY	SIZE
AREA 01 MIX								
Ca	<i>Cryocephalum apiculatum</i>	Yellow Buttons	400	500	500	15%	284	150MM
Pp	<i>Poa poiiformis</i> ' PP500'	Tussock Grass	400	450	450	60%	1401	150MM
Dc	<i>Disphyma crassifolia</i>	Rounded Noonflower	200	500	500	25%	473	150MM
AREA 02 MIX								
Cr	<i>Carprobrotus rossii</i>	Pigface/Karkalla	200	1500	500	20%	132	150MM
Pp	<i>Poa poiiformis</i> ' PP500'	Tussock Grass	400	450	450	65%	530	150MM
AREA 03 MIX								
Al	<i>Acacia longifolia subsp. Sophorae.</i>	Coast wattle	1500	4000	1000	5%	42	150MM
Ac	<i>Atriplex cinerea</i>	Coastal Saltbush	1500	1500	500	20%	666	150MM
Cr	<i>Carprobrotus rossii</i>	Pigface/Karkalla	200	1500	500	10%	333	150MM
Dc	<i>Disphyma crassifolia</i>	Rounded noon-flower	200	500	500	20%	666	150MM
Dd	<i>Distichlis distichophylla</i>	Australian salt-grass	300	600	400	10%	520	150MM
Mi	<i>Myoproum insulare.</i>	Common boobialla	3500	2000	1000	5%	42	150MM
Pl	<i>Poa labillardierei</i>	Common Tussock-grass	800	800	500	10%	166	150MM
Rc	<i>Rhagodia candolleana</i>	Seaberry saltbush	2000	2000	1000	30%	250	150MM
AREA 04 MIX								
Ac	<i>Atriplex cinerea</i>	Coastal Saltbush	1500	1500	500	20%	84	150MM
Cr	<i>Carprobrotus rossii</i>	Pigface/Karkalla	200	1500	500	10%	42	150MM
Dc	<i>Disphyma crassifolia</i>	Rounded noon-flower	200	500	500	20%	84	150MM
Dd	<i>Distichlis distichophylla</i>	Australian salt-grass	300	600	400	10%	66	150MM
Mi	<i>Myoproum insulare.</i>	Common boobialla	3500	2000	1000	5%	5	150MM
Pl	<i>Poa labillardierei</i>	Common Tussock-grass	800	800	500	10%	21	150MM
Rc	<i>Rhagodia candolleana</i>	Seaberry saltbush	2000	2000	1000	25%	26	150MM
TREE								
Bi	<i>Banksia integrifolia</i>	Coast banksia	6000	3000	AS SHOWN		10	90L



- WARNING -
CONTRACTOR TO VERIFY LOCATION, DEPTH/CLEARANCE AND ALIGNMENT OF OVERHEAD AND UNDERGROUND SERVICES. CONTRACTOR TO ACQUIRE CURRENT AND RELEVANT 'DIAL BEFORE YOU DIG'ONE CALL' SERVICES DRAWINGS AND ADHERE TO ALL REQUIREMENTS FOR WORKS NEAR SERVICES INCLUDING CLEARANCES, EASEMENTS AND INFORMING SERVICE AUTHORITIES PRIOR TO COMMENCEMENT OF WORKS. THE LOCATIONS OF UNDERGROUND SERVICES INDICATED IN THIS SET OF DRAWINGS ARE INDICATIVE ONLY. PIT LOCATIONS HAVE BEEN SURVEYED BY A LICENSED SURVEYOR.

- SITE DIMENSIONS -
CONTRACTOR TO SATISFY THEMSELVES OF SITE CONDITIONS, CHANGES IN LEVEL AND DIMENSIONS PRIOR TO FABRICATION OF SITE SPECIFIC ITEMS OR PRIOR TO ORDERING/PURCHASING MATERIALS. WHERE DISCREPANCIES EXIST BETWEEN DRAWINGS AND SITE CONDITIONS CONTRACTOR TO NOTIFY SUPERINTENDENT PRIOR TO COMMENCEMENT OF WORKS.

- COPYRIGHT AND INTELLECTUAL PROPERTY RIGHTS -
ENLOCUS RETAINS THE INTELLECTUAL PROPERTY RIGHT IN RELATION TO THE CONTRACT MATERIAL. THE DESIGN AS REPRESENTED BY THE DRAWING SET AND ALL DETAILS, INGENUITY AND INNOVATION REMAIN THE PROPERTY OF ENLOCUS. REFER TO CONTRACT FOR IRREVOCABLE LICENSE GRANTED TO THE CLIENT AND COPYRIGHT ARRANGEMENT. © ENLOCUS 2025

DRAWING STATUS:

DD ISSUE
NOT FOR CONSTRUCTION

REVISION STATUS:

B Design Development 04.02.25
A Design Development - Consultant Issue 17.01.25

LANDSCAPE ARCHITECT CONSULTANT:

enlocus
ENLOCUS
Level 1, 151 St Georges Rd,
Fitzroy North, Victoria 3066
T : 03 9482 2202
W: www.enlocus.com

CONSULTANTS:

NOTES / LEGEND:

PLANTING NOTES:

- CONTRACTOR TO VERIFY LOCATION, DEPTH/CLEARANCE AND ALIGNMENT OF ALL OVERHEAD AND UNDERGROUND SERVICES INDICATED ON CURRENT AND RELEVANT 'DIAL BEFORE YOU DIG'ONE CALL' SERVICES DRAWINGS CONTRACTOR TO REQUEST ADDITIONAL SERVICES RECORDS FROM COUNCIL WHERE SERVICES ACCESS PIT'S, LIGHT POLES, METRES/VALVES ETC EXIST ON SITE CONTRACTOR TO ASSUME GENERAL ALIGNMENT OF UNDERGROUND PIPES, CONDUITS, CABLES ETC AND VERIFY ALIGNMENT AND MARK ON SITE PRIOR TO COMMENCEMENT OF WORKS.
- LICENSED SURVEYOR TO BE USED TO LOCATE HEIGHT DATUM & SET OUT POINT AS SHOWN ON DRAWINGS PRIOR TO COMMENCEMENT OF WORKS. CONTRACTOR TO INFORM SUPERINTENDENT OF ANY DISCREPANCIES PRIOR TO COMMENCING WORKS.
- STOCK PILED SITE TOPSOIL TO BE USED WHERE APPROVED BY SUPERINTENDENT. STOCK PILED TOPSOIL TO BE CLEARED OF VEGETATIVE MATTER AND DEBRIS.

PLANT SCHEDULE:

SYMBOL	PROPOSED TREES. REFER TO PLANTING SCHEDULE AND LD400_A	QTY.
	MIXED PLANT SPECIES. REFER TO LD400_B AND SPECIFICATION.	473 SQM
	MIXED PLANT SPECIES. REFER TO LD400_B AND SPECIFICATION.	165 SQM
	MIXED PLANT SPECIES. REFER TO LD400_B AND SPECIFICATION.	832 SQM
	KIKUYU SEED BLEND ROLLED TURF. REFER TO DETAIL CD400_D AND SPECIFICATION.	331 SQM

Bayside City Council
Planning Environment Act 1987

ADVERTISED PLAN

Planning Application No: 5/2025/93/1

Date: 09/07/25

CLIENT NAME:

BAYSIDE CITY COUNCIL
76 Royal Avenue, Sandringham,
VIC 3191

PROJECT NAME:

HAMPTON FORESHORE PRECINCT
Beach Rd, Sandringham, VIC 3191

DRAWING TITLE:

Planting Plan B - S1

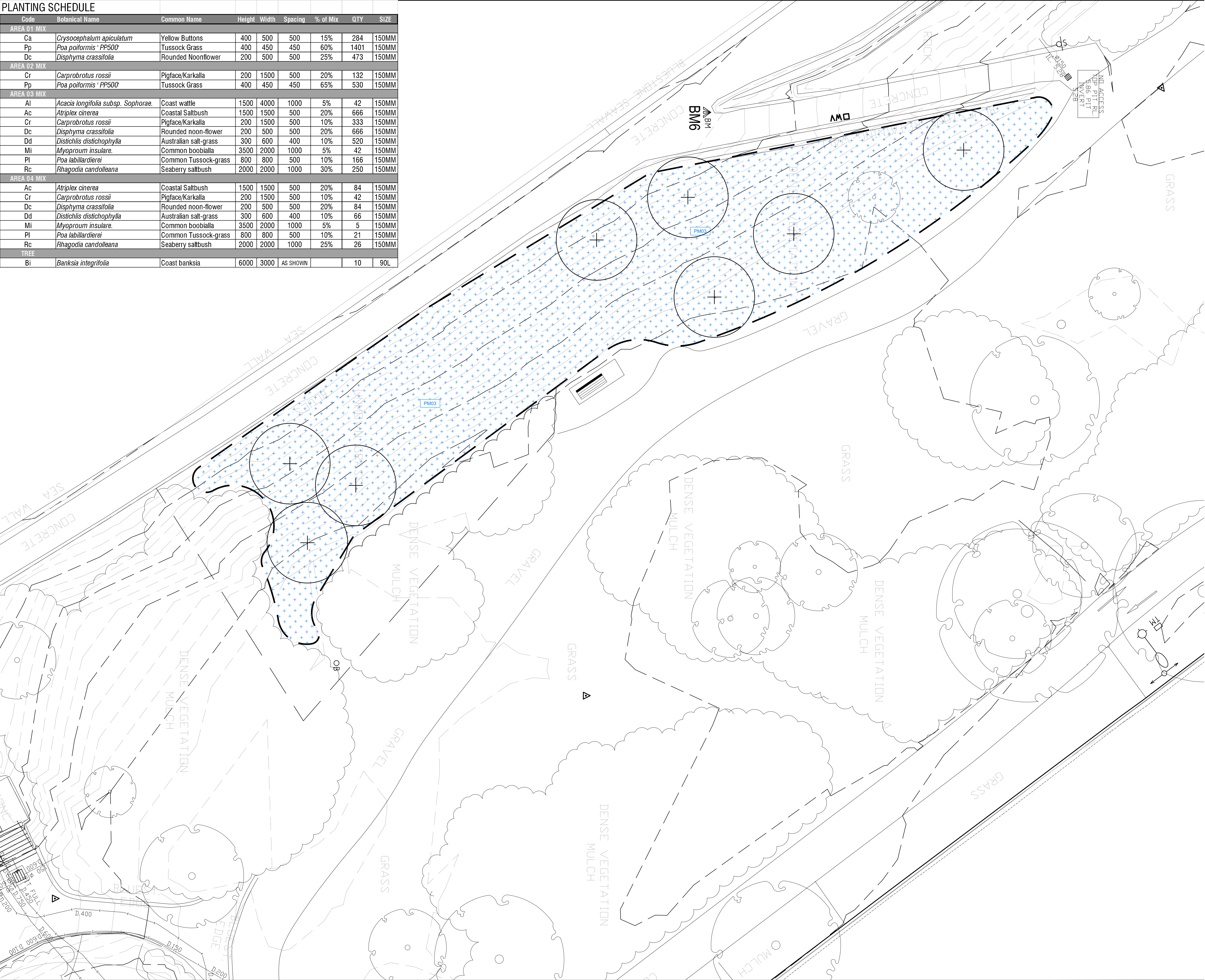
SCALE: 1:100 DATE OF ISSUE: 07.02.2025
FORMAT / SIZE: A1 REFERENCE NO: 2411
DESIGN REVIEW: SB APPROVAL: MF

DRAWING NUMBER: REVISION:

2411_LD 107B B



PLANTING SCHEDULE								
Code	Botanical Name	Common Name	Height	Width	Spacing	% of Mix	QTY	SIZE
AREA 01 MIX								
Ca	<i>Crysocephalum apiculatum</i>	Yellow Buttons	400	500	500	15%	284	150MM
Pp	<i>Poa poiformis</i> ' PP500'	Tussock Grass	400	450	450	60%	1401	150MM
Dc	<i>Disphyma crassifolia</i>	Rounded Noonflower	200	500	500	25%	473	150MM
AREA 02 MIX								
Cr	<i>Carprobrutus rossii</i>	Pigface/Karkalla	200	1500	500	20%	132	150MM
Pp	<i>Poa poiformis</i> ' PP500'	Tussock Grass	400	450	450	65%	530	150MM
AREA 03 MIX								
Al	<i>Acacia longifolia subsp. Sophorae.</i>	Coast wattle	1500	4000	1000	5%	42	150MM
Ac	<i>Atriplex cinerea</i>	Coastal Saltbush	1500	1500	500	20%	666	150MM
Cr	<i>Carprobrutus rossii</i>	Pigface/Karkalla	200	1500	500	10%	333	150MM
Dc	<i>Disphyma crassifolia</i>	Rounded noon-flower	200	500	500	20%	666	150MM
Dd	<i>Distichlis distichophylla</i>	Australian salt-grass	300	600	400	10%	520	150MM
Mi	<i>Myoproum insulare.</i>	Common boobialla	3500	2000	1000	5%	42	150MM
Pl	<i>Poa labillardierei</i>	Common Tussock-grass	800	800	500	10%	166	150MM
Rc	<i>Rhagodia candolleana</i>	Seaberry saltbush	2000	2000	1000	30%	250	150MM
AREA 04 MIX								
Ac	<i>Atriplex cinerea</i>	Coastal Saltbush	1500	1500	500	20%	84	150MM
Cr	<i>Carprobrutus rossii</i>	Pigface/Karkalla	200	1500	500	10%	42	150MM
Dc	<i>Disphyma crassifolia</i>	Rounded noon-flower	200	500	500	20%	84	150MM
Dd	<i>Distichlis distichophylla</i>	Australian salt-grass	300	600	400	10%	66	150MM
Mi	<i>Myoproum insulare.</i>	Common boobialla	3500	2000	1000	5%	5	150MM
Pl	<i>Poa labillardierei</i>	Common Tussock-grass	800	800	500	10%	21	150MM
Rc	<i>Rhagodia candolleana</i>	Seaberry saltbush	2000	2000	1000	25%	26	150MM
TREE								
Bi	<i>Banksia integrifolia</i>	Coast banksia	6000	3000	AS SHOWN		10	90L



- WARNING -
CONTRACTOR TO VERIFY LOCATION, DEPTH/CLEARANCE AND ALIGNMENT OF OVERHEAD AND UNDERGROUND SERVICES. CONTRACTOR TO ACQUIRE CURRENT AND RELEVANT 'DIAL BEFORE YOU DIG' ONE CALL' SERVICES DRAWINGS AND ADHERE TO ALL REQUIREMENTS FOR WORKS NEAR SERVICES INCLUDING CLEARANCES, EASEMENTS AND INFORMING SERVICE AUTHORITIES PRIOR TO COMMENCEMENT OF WORKS. THE LOCATIONS OF UNDERGROUND SERVICES INDICATED IN THIS SET OF DRAWINGS ARE INDICATIVE ONLY. PIT LOCATIONS HAVE BEEN SURVEYED BY A LICENSED SURVEYOR.

- SITE DIMENSIONS -
CONTRACTOR TO SATISFY THEMSELVES OF SITE CONDITIONS, CHANGES IN LEVEL AND DIMENSIONS PRIOR TO FABRICATION OF SITE SPECIFIC ITEMS OR PRIOR TO ORDERING/PURCHASING MATERIALS. WHERE DISCREPANCIES EXIST BETWEEN DRAWINGS AND SITE CONDITIONS CONTRACTOR TO NOTIFY SUPERINTENDENT PRIOR TO COMMENCEMENT OF WORKS.

- COPYRIGHT AND INTELLECTUAL PROPERTY RIGHTS -
ENLOCUS RETAINS THE INTELLECTUAL PROPERTY RIGHT IN RELATION TO THE CONTRACT MATERIAL. THE DESIGN AS REPRESENTED BY THE DRAWING SET AND ALL DETAILS, INGENUITY AND INNOVATION REMAIN THE PROPERTY OF ENLOCUS. REFER TO CONTRACT FOR IRREVOCABLE LICENSE GRANTED TO THE CLIENT AND COPYRIGHT ARRANGEMENT. © ENLOCUS 2025

DD ISSUE

NOT FOR CONSTRUCTION

REVISION STATUS:

B	Design Development	04.02.25
A	Design Development - Consultant Issue	17.01.25

LANDSCAPE ARCHITECT CONSULTANT:

enlocus

ENLOCUS
Level 1, 151 St Georges Rd,
Fitzroy North, Victoria 3066
T : 03 9482 2202
W: www.enlocus.com

CONSULTANTS:

NOTES / LEGEND:

PLANTING NOTES:

01. CONTRACTOR TO VERIFY LOCATION, DEPTH/CLEARANCE AND ALIGNMENT OF ALL OVERHEAD AND UNDERGROUND SERVICES INDICATED ON CURRENT AND RELEVANT 'DIAL BEFORE YOU DIG' ONE CALL' SERVICES DRAWINGS. CONTRACTOR TO REQUEST ADDITIONAL SERVICES RECORDS FROM COUNCIL WHERE SERVICES ACCESS PITS, LIGHT POLES, METRE/SVALVES ETC EXIST ON SITE. CONTRACTOR TO ASSUME GENERAL ALIGNMENT OF UNDERGROUND PIPES, CONDUITS, CABLES ETC AND VERIFY ALIGNMENT AND MARK ON SITE PRIOR TO COMMENCEMENT OF WORKS.

02. LICENSED SURVEYOR TO BE USED TO LOCATE HEIGHT DATUM & SET OUT POINT AS SHOWN ON DRAWINGS PRIOR TO COMMENCEMENT OF WORKS. CONTRACTOR TO INFORM SUPERINTENDENT OF ANY DISCREPANCIES PRIOR TO COMMENCING WORKS.

03. STOCK PILED SITE TOPSOIL TO BE USED WHERE APPROVED BY SUPERINTENDENT. STOCK PILED TOPSOIL TO BE CLEARED OF VEGETATIVE MATTER AND DEBRIS.

PLANT SCHEDULE:		
SYMBOL	PROPOSED TREES. REFER TO PLANTING SCHEDULE AND LD400_A	QTY.
	PM01 MIXED PLANT SPECIES. REFER TO LD400_B AND SPECIFICATION.	473 SOM
	PM02 MIXED PLANT SPECIES. REFER TO LD400_B AND SPECIFICATION.	166 SOM
	PM03 MIXED PLANT SPECIES. REFER TO LD400_B AND SPECIFICATION.	832 SOM
	G01 KUKUVI SEED BLEND ROLLED TURF. REFER TO DETAIL CD400_D AND SPECIFICATION.	331 SOM

Bayside City Council
Planning Environment Act 1987
ADVERTISED PLAN
Planning Application No: 5/2025/93/1
Date: 09/07/25

CLIENT NAME:

BAYSIDE CITY COUNCIL
76 Royal Avenue, Sandringham,
VIC 3191

PROJECT NAME:

HAMPTON FORESHORE PRECINCT
Beach Rd, Sandringham, VIC 3191

DRAWING TITLE:
Planting Plan D - S1

SCALE:	1:100	DATE OF ISSUE:	07.02.2025
FORMAT / SIZE:	A1	REFERENCE NO:	2411
DESIGN REVIEW:	SB	APPROVAL:	MF

DRAWING NUMBER:

2411_LD 107D

REVISION:

B