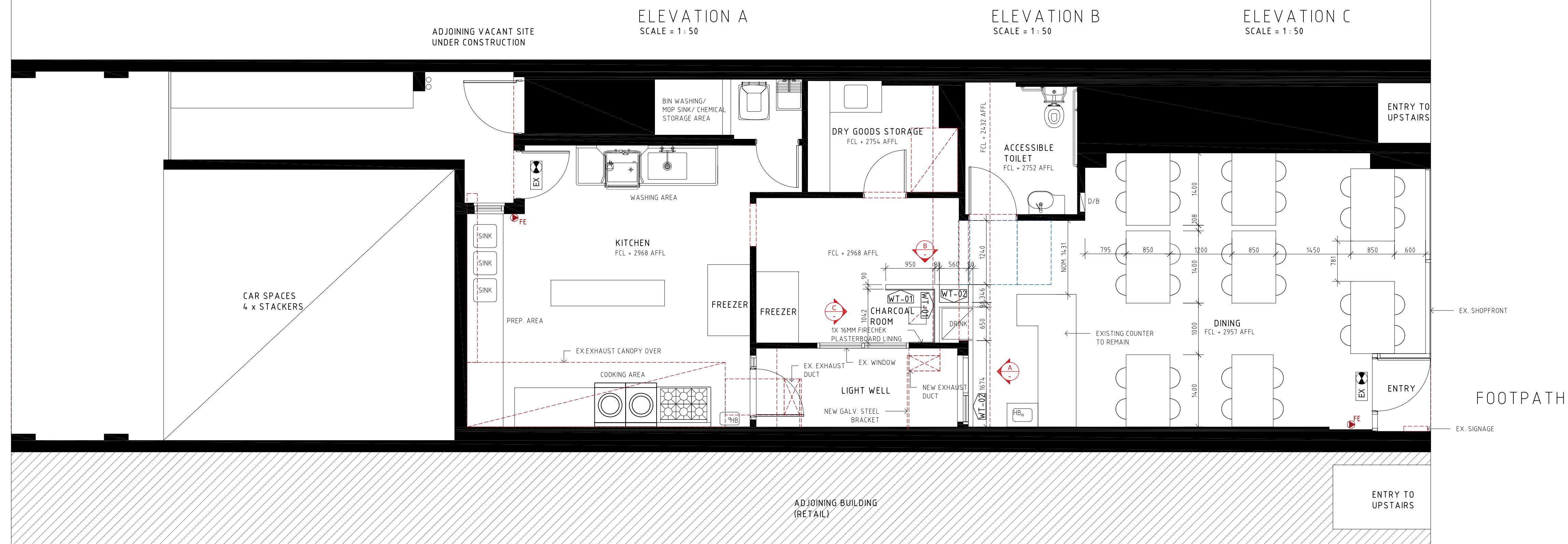


The floor plan shows a rectangular room with a dashed line indicating the finished floor level (FFL) at 2957 AFFL. The room contains a 'DRINK' station and a 'CHARCOAL ROOM' area. A note indicates 'CHECK EQUIPMENT SIZE ON SITE'. The room is lined with '1X 15MM FIRECHECK PLASTERBOARD LINING'. The FFL is marked as 0 at the bottom left and right corners.



CODE	DESCRIPTION			
	WALL TYPE	WALL FRAME	LINING	REMARKS
WT-01	TIMBER STUD WALL	90 X 45 F7 TIMBER STUD WALL FRAME	EXTERNAL: FINISH WITH 10MM THICK PLASTERBOARD AND PAINT. INTERNAL(CHARCOAL ROOM):1 X 16MM FYRCEK PLASTERBOARD	INTERNAL WALL. (DRY AREA)
WT-02	TIMBER STUD WALL	90 X 45 F7 TIMBER STUD WALL FRAME	INTERNAL: FINISH WITH 10MM THICK PLASTERBOARD AND PAINT.	INTERNAL WALL. (DRY AREA)

ACD 200