



Performance Report for: <http://www.flex-flux.com/>

Report generated: Sun, Dec 10, 2023 1:01 AM +0100 (via API)
 Test Server Location: London, UK
 Using: Chrome 117.0.0.0, Lighthouse 11.0.0
 Analysis options: Adblock Plus

B	Performance 82%	Structure 91%	L. Contentful Paint 2.3s	T. Blocking Time 52ms	C. Layout Shift 0
----------	---------------------------	-------------------------	------------------------------------	---------------------------------	-----------------------------

Top Issues

IMPACT	AUDIT	
Med	Eliminate render-blocking resources <small>FCP LCP</small>	Potential savings of 486ms
Med	Serve static assets with an efficient cache policy	Potential savings of 1.57MB
Med	Use a Content Delivery Network (CDN)	90 resources found
Low	Ensure text remains visible during webfont load <small>FCP LCP</small>	7 fonts found
Low	Avoid chaining critical requests <small>FCP LCP</small>	85 chains found

Page Details



Total Page Size - 2.30MB



Total Page Requests - 101



HTML
JS
CSS
IMG
Video
Font
Other

How does this affect me?

Today's web user expects a fast and seamless website experience. Delivering that fast experience can result in increased visits, conversions and overall happiness.

As if you didn't need more incentive, **Google has announced that they are using page speed in their ranking algorithm.**

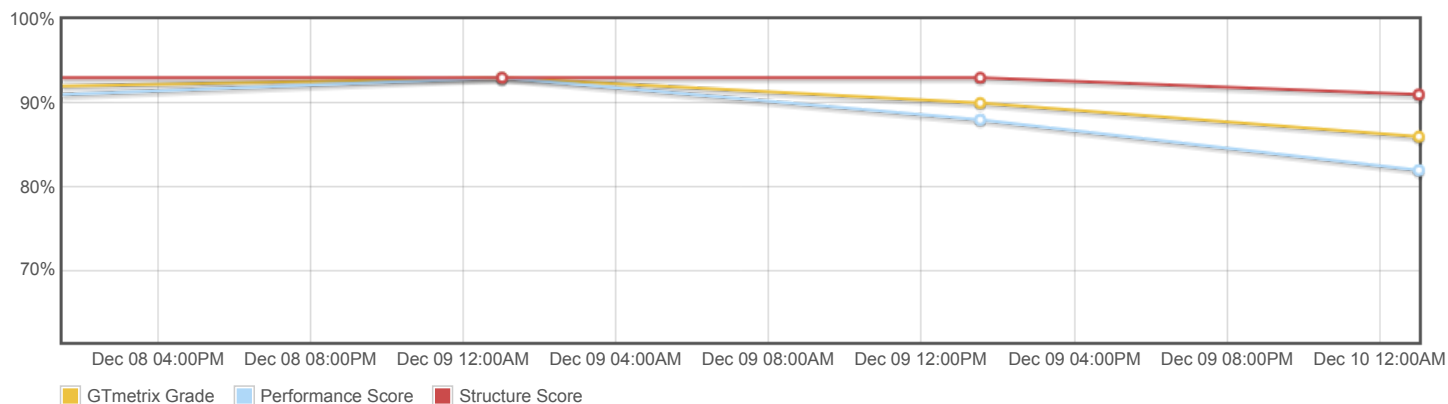
About GTmetrix

CARBON60
THE MANAGED CLOUD COMPANY

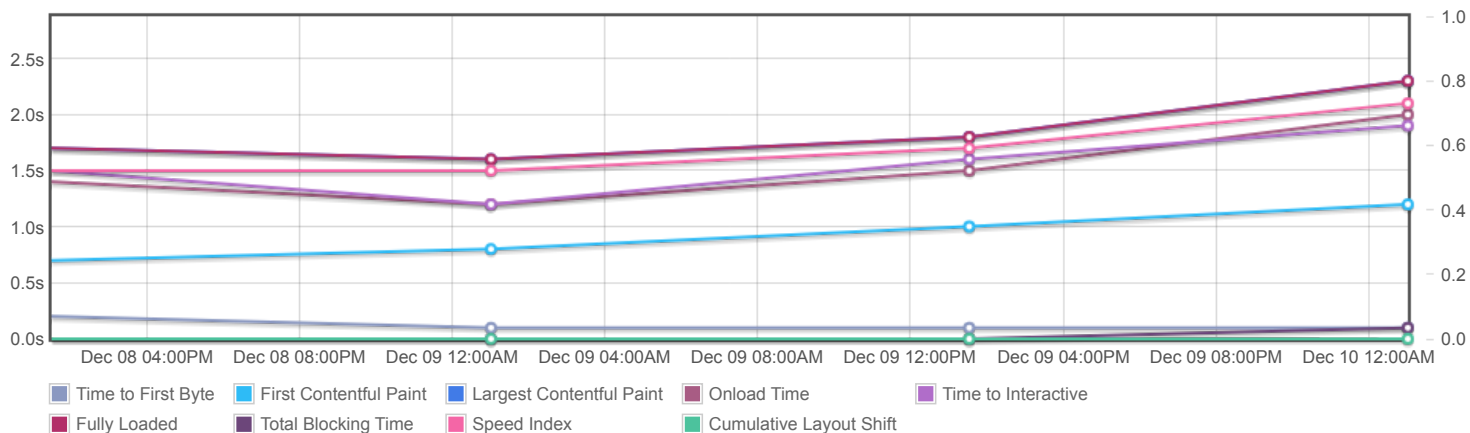
GTmetrix is developed by the good folks at **Carbon60**, a Canadian hosting company with over 27 years experience in web technology.

<https://carbon60.com/>

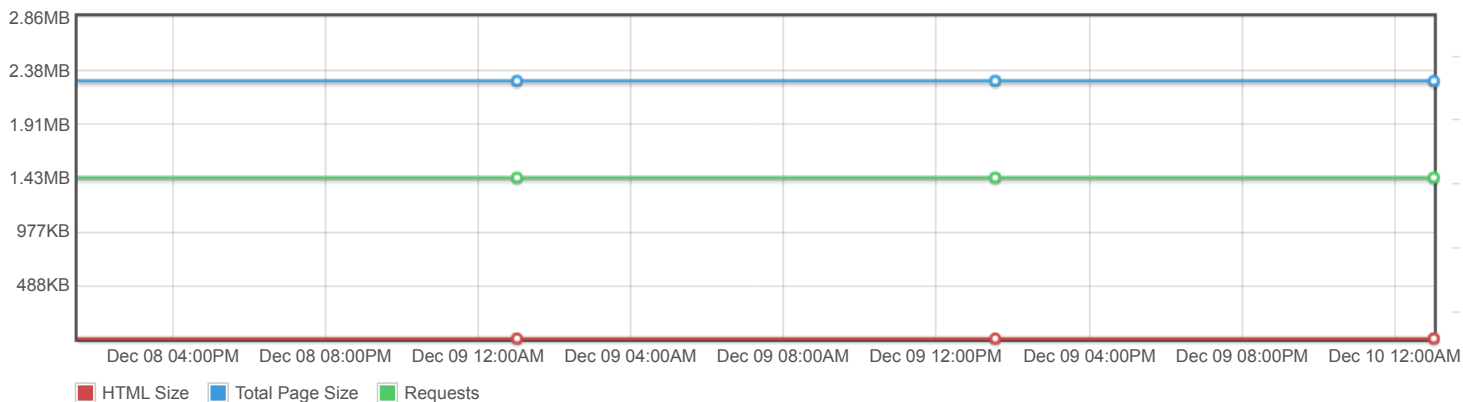
Page scores



Page metrics

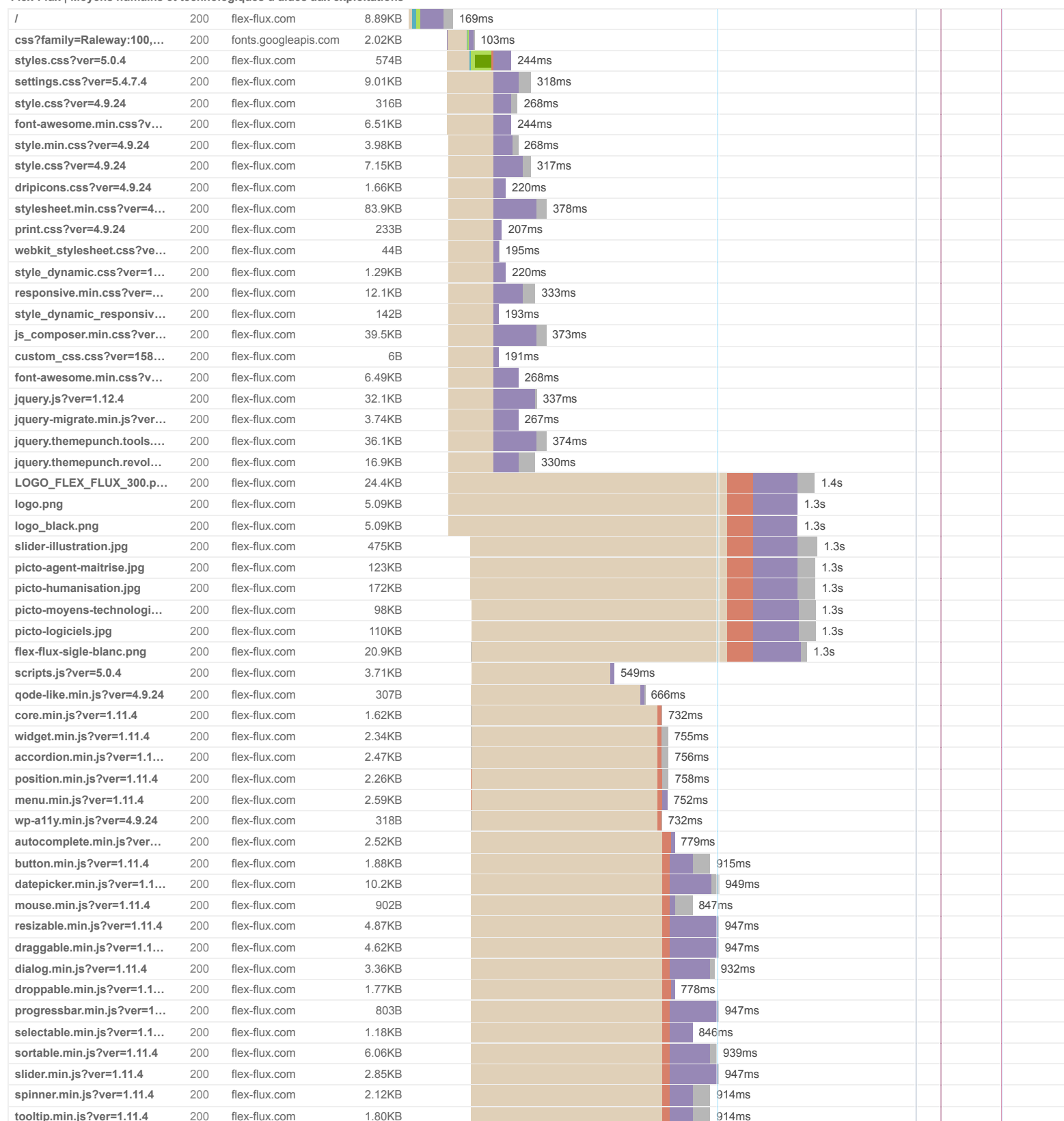


Page sizes and request counts

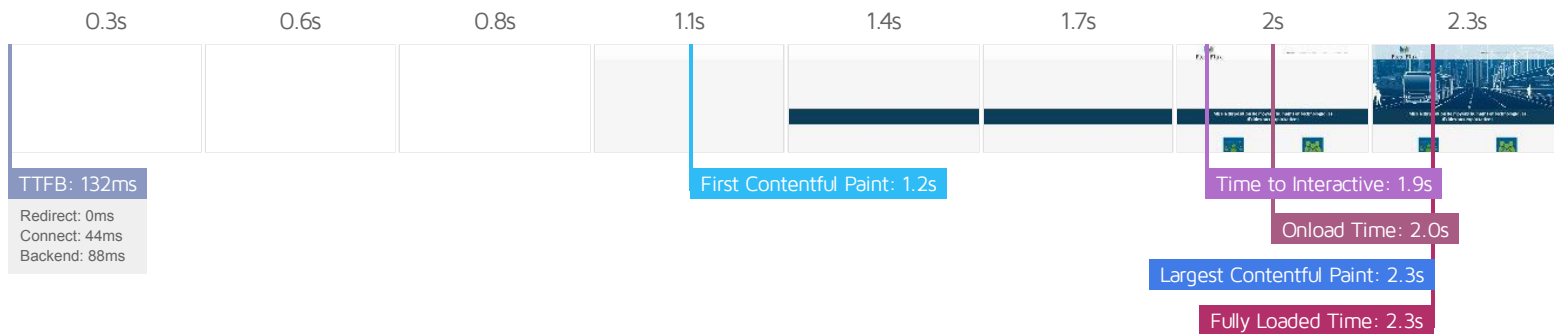


The waterfall chart displays the loading behaviour of your site in your selected browser. It can be used to discover simple issues such as 404's or more complex issues such as external resources blocking page rendering.

Flex-Flux | Moyens humains et technologiques d'aides aux exploitations



tabs.min.js?ver=1.11.4	200	flex-flux.com	3.62KB		957ms			
effect.min.js?ver=1.11.4	200	flex-flux.com	4.87KB		1.2s			
effect-blind.min.js?ver=1....	200	flex-flux.com	576B		1.1s			
effect-bounce.min.js?ver...	200	flex-flux.com	645B		965ms			
effect-clip.min.js?ver=1.11.4	200	flex-flux.com	487B		1s			
effect-drop.min.js?ver=1....	200	flex-flux.com	517B		1.1s			
effect-explode.min.js?ver...	200	flex-flux.com	613B		1.1s			
effect-fade.min.js?ver=1.1...	200	flex-flux.com	287B		1.1s			
effect-fold.min.js?ver=1.1...	200	flex-flux.com	551B		1.1s			
effect-highlight.min.js?ve...	200	flex-flux.com	395B		956ms			
effect-pulsate.min.js?ver...	200	flex-flux.com	432B		1.1s			
effect-size.min.js?ver=1.1...	200	flex-flux.com	1.11KB		1s			
effect-scale.min.js?ver=1....	200	flex-flux.com	509B		972ms			
effect-shake.min.js?ver=1...	200	flex-flux.com	559B		1.1s			
effect-slide.min.js?ver=1....	200	flex-flux.com	504B		965ms			
effect-transfer.min.js?ver...	200	flex-flux.com	428B		1.1s			
plugins.js?ver=4.9.24	200	flex-flux.com	122KB		1.3s			
jquery.carouFredSel-6.2.1...	200	flex-flux.com	13.7KB		1.2s			
lemmon-slider.min.js?ver...	200	flex-flux.com	1.34KB		1.1s			
jquery.fullPage.min.js?ve...	200	flex-flux.com	6.75KB		1.1s			
jquery.mousewheel.min.j...	200	flex-flux.com	631B		1s			
jquery.touchSwipe.min.js...	200	flex-flux.com	3.77KB		973ms			
isotope.pkgd.min.js?ver=...	200	flex-flux.com	9.24KB		1.2s			
packery-mode.pkgd.min.j...	200	flex-flux.com	3.91KB		1s			
jquery.stretch.js?ver=4.9.24	200	flex-flux.com	1.61KB		1.1s			
imagesloaded.js?ver=4.9.24	200	flex-flux.com	1.66KB		1.1s			
rangeslider.min.js?ver=4....	200	flex-flux.com	2.44KB		973ms			
jquery.event.move.js?ver...	200	flex-flux.com	4.00KB		1.1s			
jquery.twentytwenty.js?ve...	200	flex-flux.com	907B		953ms			
TweenLite.min.js?ver=4.9...	200	flex-flux.com	8.35KB		1.2s			
ScrollToPlugin.min.js?ver...	200	flex-flux.com	0.99KB		1.1s			
smoothPageScroll.min.js...	200	flex-flux.com	312B		958ms			
default_dynamic.js?ver=1...	200	flex-flux.com	1.39KB		1.1s			
default.min.js?ver=4.9.24	200	flex-flux.com	37.9KB		1.2s			
custom_js.js?ver=158774...	200	flex-flux.com	70B		1s			
comment-reply.min.js?ve...	200	flex-flux.com	488B		1.2s			
js_composer_front.min.js...	200	flex-flux.com	5.30KB		1.2s			
wp-embed.min.js?ver=4.9...	200	flex-flux.com	678B		1.2s			
wp-emoji-release.min.js?...	200	flex-flux.com	3.96KB		913ms			
memvYaGs126MiZpBA-U...	200	fonts.gstatic.com	48.0KB		563ms			
fontawesome-webfont.wo...	(failed)	flex-flux.com	75.4KB		706ms			
fontawesome-webfont.wo...	(failed)	flex-flux.com	95.7KB		111ms			
fontawesome-webfont.ttf...	(failed)	flex-flux.com	162KB		108ms			
fontawesome-webfont.wo...	(failed)	flex-flux.com	75.4KB		61ms			
revolution.extension.slide...	200	flex-flux.com	7.17KB		18ms			
fontawesome-webfont.wo...	(failed)	flex-flux.com	95.7KB		27ms			
fontawesome-webfont.ttf...	(failed)	flex-flux.com	162KB		39ms			
favico-flex-flux.png	200	flex-flux.com	17.5KB		32ms			
101 Requests 2.30MB (4.68MB Uncompressed) Fully Loaded 2.3s (Onload 2s)								



Performance Metrics

First Contentful Paint How quickly content like text or images are painted onto your page. A good user experience is 0.9s or less.	OK, but consider improvement 1.2s	Time to Interactive How long it takes for your page to become fully interactive. A good user experience is 2.5s or less.	Good - Nothing to do here 1.9s
Speed Index How quickly the contents of your page are visibly populated. A good user experience is 1.3s or less.	Longer than recommended 2.1s	Total Blocking Time How much time is blocked by scripts during your page loading process. A good user experience is 150ms or less.	Good - Nothing to do here 52ms
Largest Contentful Paint How long it takes for the largest element of content (e.g. a hero image) to be painted on your page. A good user experience is 1.2s or less.	Longer than recommended 2.3s	Cumulative Layout Shift How much your page's layout shifts as it loads. A good user experience is a score of 0.1 or less.	Good - Nothing to do here 0

Browser Timings

Redirect	0ms	Connect	44ms	Backend	88ms
TTFB	132ms	First Paint	1.2s	DOM Int.	1.9s
DOM Loaded	1.9s	Onload	2.0s	Fully Loaded	2.3s

IMPACT	AUDIT	
Med	Eliminate render-blocking resources <small>FCP LCP</small>	Potential savings of 486ms
Med	Serve static assets with an efficient cache policy	Potential savings of 1.57MB
Med	Use a Content Delivery Network (CDN)	90 resources found
Low	Ensure text remains visible during webfont load <small>FCP LCP</small>	7 fonts found
Low	Avoid chaining critical requests <small>FCP LCP</small>	85 chains found
Low	Avoid long main-thread tasks <small>TBT</small>	6 long tasks found
Low	Reduce JavaScript execution time <small>TBT</small>	520ms spent executing JavaScript
Low	Avoid an excessive DOM size <small>TBT</small>	304 elements
Low	Avoid enormous network payloads <small>LCP</small>	Total size was 1.65MB
Low	Properly size images	Potential savings of 470KB
Low	Efficiently encode images	Potential savings of 593KB
Low	Reduce unused CSS <small>FCP LCP</small>	Potential savings of 134KB
Low	Serve images in next-gen formats	Potential savings of 836KB
Low	Minify CSS <small>FCP LCP</small>	Potential savings of 3.20KB
Low	Minify JavaScript <small>FCP LCP</small>	Potential savings of 12.0KB
Low	Reduce unused JavaScript <small>LCP</small>	Potential savings of 132KB
N/A	Largest Contentful Paint element <small>LCP</small>	2,270 ms
N/A	Reduce initial server response time <small>FCP LCP</small>	Root document took 87ms
N/A	Avoid serving legacy JavaScript to modern browsers <small>TBT</small>	Potential savings of 8.46KB
N/A	Avoid large layout shifts <small>CLS</small>	1 element found
N/A	Minimize main-thread work <small>TBT</small>	Main-thread busy for 1.9s
N/A	Reduce the impact of third-party code <small>TBT</small>	Total size was 50.1KB
N/A	User Timing marks and measures	