



Performance Report for: <http://www.caeirus.com/>

Report generated: Sun, Dec 10, 2023 1:01 AM +0100 (via API)
 Test Server Location: London, UK
 Using: Chrome 117.0.0.0, Lighthouse 11.0.0
 Analysis options: Adblock Plus

E	Performance 34%	Structure 91%	L. Contentful Paint 4.6s	T. Blocking Time 1.2s	C. Layout Shift 0.11
----------	---------------------------	-------------------------	------------------------------------	---------------------------------	--------------------------------

Top Issues

IMPACT	AUDIT	
Med	Use explicit width and height on image elements <small>CLS</small>	5 images found
Med	Avoid long main-thread tasks <small>TBT</small>	18 long tasks found
Med-Low	Use a Content Delivery Network (CDN)	50 resources found
Med-Low	Avoid an excessive DOM size <small>TBT</small>	1,233 elements
Low	Reduce JavaScript execution time <small>TBT</small>	1.7s spent executing JavaScript

Page Details



Total Page Size - 2.00MB



Total Page Requests - 85



HTML JS CSS IMG Video Font Other

How does this affect me?

Today's web user expects a fast and seamless website experience. Delivering that fast experience can result in increased visits, conversions and overall happiness.

As if you didn't need more incentive, **Google has announced that they are using page speed in their ranking algorithm.**

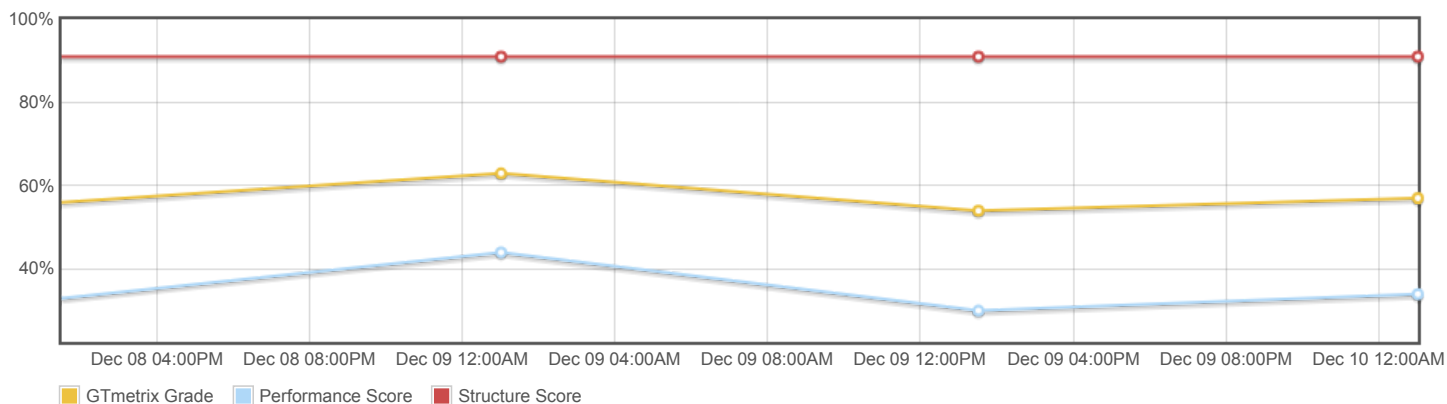
About GTmetrix

CARBON60
THE MANAGED CLOUD COMPANY

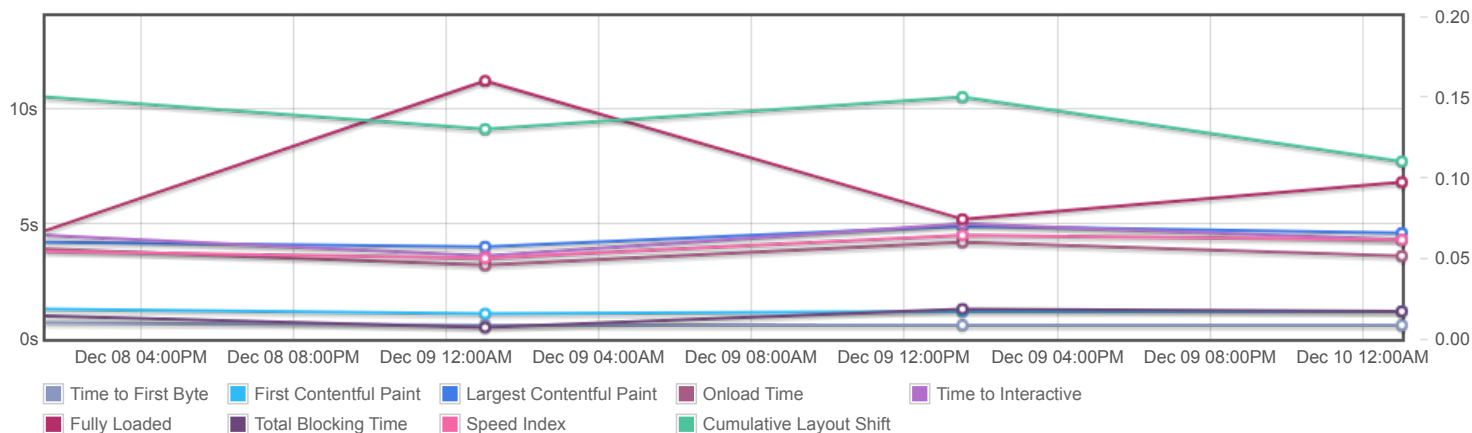
GTmetrix is developed by the good folks at **Carbon60**, a Canadian hosting company with over 27 years experience in web technology.

<https://carbon60.com/>

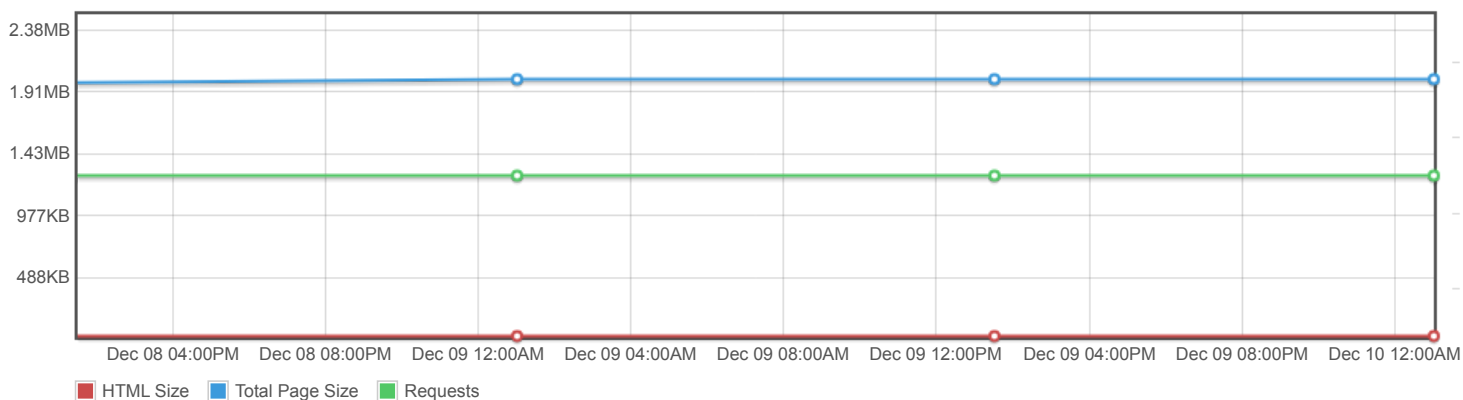
Page scores



Page metrics

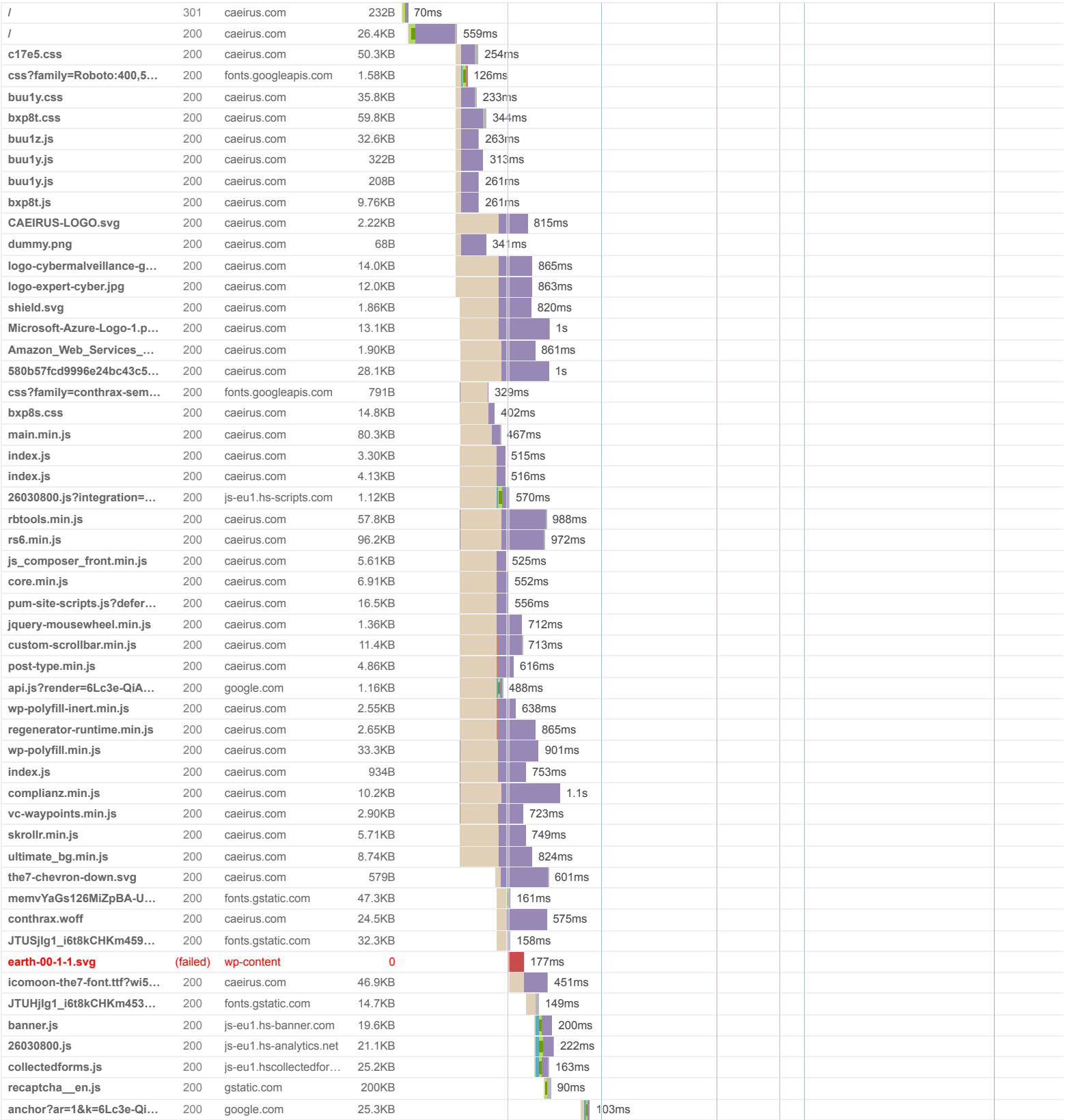


Page sizes and request counts

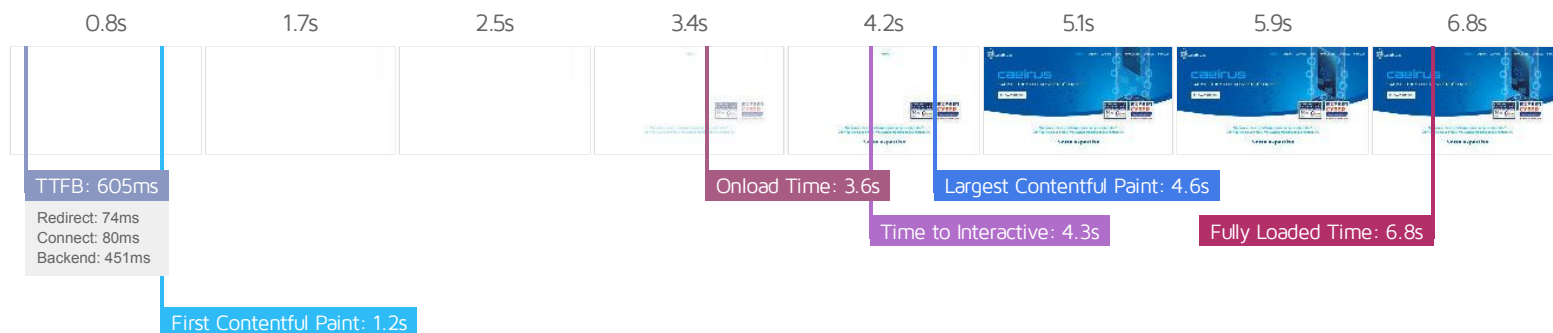


The waterfall chart displays the loading behaviour of your site in your selected browser. It can be used to discover simple issues such as 404's or more complex issues such as external resources blocking page rendering.

Caeirus - Expert en cybersécurité



fond-01.jpg	200	caeirus.com	30.7KB			128ms			
bottom.svg	200	caeirus.com	745B			71ms			
tel.svg	200	caeirus.com	6.91KB			94ms			
orbs-arr.svg	200	caeirus.com	3.24KB			115ms			
base.svg	200	caeirus.com	6.45KB			155ms			
json?portalId=26030800&...	200	forms-eu1.hscollecte...	456B			80ms			
banner-1-optin.css?v=12	200	caeirus.com	2.81KB			88ms			
schema	200	caeirus.com	569B						4.5s
schema	200	caeirus.com	730B						4.6s
schema	200	caeirus.com	932B						4.5s
schema	200	caeirus.com	739B						4.5s
osint-investigations.jpeg	200	caeirus.com	309KB			108ms			
Calque-14.jpg	200	caeirus.com	75.5KB			101ms			
styles__ltr.css	200	gstatic.com	24.0KB			37ms			
recaptcha__en.js	200	gstatic.com	200KB			51ms			
shutterstock_559844623.jpg	200	caeirus.com	37.6KB			82ms			
SHUkEiphQuZqXyLzDNA...	200	google.com	6.69KB			30ms			
logo_48.png	200	gstatic.com	2.18KB			25ms			
KFOmCnqEu92Fr1Mu4mx...	200	fonts.gstatic.com	15.0KB			107ms			
KFOlCnqEu92Fr1MmEU9f...	200	fonts.gstatic.com	15.2KB			107ms			
webworker.js?hl=en&v=c...	200	google.com	134B			31ms			
03.jpg	200	caeirus.com	53.2KB			81ms			
expert-cybersecurite-a...	200	caeirus.com	100KB			93ms			
counters.gif?key=collecte...	200	forms-eu1.hsforms.c...	0.99KB			124ms			
tube.svg	200	caeirus.com	1.32KB			69ms			
orbs-av.svg	200	caeirus.com	6.49KB			86ms			
lock.svg	200	caeirus.com	1.87KB			105ms			
26030800.js	200	js-eu1.hs-scripts.com	768B			135ms			
__ptq.gif?k=1&sd=1367x8...	200	track-eu1.hubspot.com	45B			230ms			
FAVICON.png	200	caeirus.com	15.4KB			81ms			
FAVICON.png	200	caeirus.com	0					22ms	
POST reload?k=6Lc3e-Qi...	200	google.com	9.38KB					65ms	
85 Requests 2.00MB (6.08MB Uncompressed) 6.8s (Onload 3.6s)									



Performance Metrics

First Contentful Paint How quickly content like text or images are painted onto your page. A good user experience is 0.9s or less.	OK, but consider improvement 1.2s	Time to Interactive How long it takes for your page to become fully interactive. A good user experience is 2.5s or less.	Longer than recommended 4.3s
Speed Index How quickly the contents of your page are visibly populated. A good user experience is 1.3s or less.	Much longer than recommended 4.3s	Total Blocking Time How much time is blocked by scripts during your page loading process. A good user experience is 150ms or less.	Much longer than recommended 1.2s
Largest Contentful Paint How long it takes for the largest element of content (e.g. a hero image) to be painted on your page. A good user experience is 1.2s or less.	Much longer than recommended 4.6s	Cumulative Layout Shift How much your page's layout shifts as it loads. A good user experience is a score of 0.1 or less.	OK, but consider improvement 0.11

Browser Timings

Redirect	74ms	Connect	80ms	Backend	451ms
TTFB	605ms	First Paint	1.2s	DOM Int.	1.7s
DOM Loaded	2.3s	Onload	3.6s	Fully Loaded	6.8s

IMPACT	AUDIT	
Med	Use explicit width and height on image elements <small>CLS</small>	5 images found
Med	Avoid long main-thread tasks <small>TBT</small>	18 long tasks found
Med-Low	Use a Content Delivery Network (CDN)	50 resources found
Med-Low	Avoid an excessive DOM size <small>TBT</small>	1,233 elements
Low	Reduce JavaScript execution time <small>TBT</small>	1.7s spent executing JavaScript
Low	Serve static assets with an efficient cache policy	Potential savings of 65.3KB
Low	Eliminate render-blocking resources <small>FCP LCP</small>	Potential savings of 113ms
Low	Avoid large layout shifts <small>CLS</small>	5 elements found
Low	Ensure text remains visible during webfont load <small>FCP LCP</small>	1 font found
Low	Avoid enormous network payloads <small>LCP</small>	Total size was 2.01MB
Low	Avoid chaining critical requests <small>FCP LCP</small>	30 chains found
Low	Properly size images	Potential savings of 19.5KB
Low	Avoid multiple page redirects <small>FCP LCP</small>	Potential savings of 72ms
Low	Efficiently encode images	Potential savings of 29.1KB
Low	Reduce unused CSS <small>FCP LCP</small>	Potential savings of 151KB
Low	Serve images in next-gen formats	Potential savings of 145KB
Low	Reduce initial server response time <small>FCP LCP</small>	Root document took 451ms
Low	Defer offscreen images	Potential savings of 41.2KB
Low	Minify CSS <small>FCP LCP</small>	Potential savings of 3.75KB
Low	Avoid non-composited animations <small>CLS</small>	10 animated elements found
Low	Minify JavaScript <small>FCP LCP</small>	Potential savings of 35.9KB
Low	Reduce unused JavaScript <small>LCP</small>	Potential savings of 231KB
N/A	Largest Contentful Paint element <small>LCP</small>	4,590 ms

N/A	Avoid serving legacy JavaScript to modern browsers <small>TBT</small>	Potential savings of 31.5KB
N/A	Minimize main-thread work <small>TBT</small>	Main-thread busy for 4.4s
N/A	Reduce the impact of third-party code <small>TBT</small>	Third-party code blocked the main thread for 89ms
N/A	User Timing marks and measures	