



Performance Report for: <http://www.azolis.com/>

Report generated: Sun, Dec 10, 2023 1:01 AM +0100 (via API)
 Test Server Location: London, UK
 Using: Chrome 117.0.0.0, Lighthouse 11.0.0
 Analysis options: Adblock Plus

F	Performance 26%	Structure 75%	L. Contentful Paint 8.6s	T. Blocking Time 1.1s	C. Layout Shift 0.06
----------	---------------------------	-------------------------	------------------------------------	---------------------------------	--------------------------------

Top Issues

IMPACT AUDIT

High	Reduce initial server response time <small>FCP LCP</small>	Root document took 1.0s
Med-High	Avoid chaining critical requests <small>FCP LCP</small>	68 chains found
Med	Avoid an excessive DOM size <small>TBT</small>	2,008 elements
Med	Avoid long main-thread tasks <small>TBT</small>	20 long tasks found
Med	Use explicit width and height on image elements <small>CLS</small>	12 images found

Page Details



Total Page Size - 1.81MB



Total Page Requests - 106



HTML JS CSS IMG Video Font Other

How does this affect me?

Today's web user expects a fast and seamless website experience. Delivering that fast experience can result in increased visits, conversions and overall happiness.

As if you didn't need more incentive, **Google has announced that they are using page speed in their ranking algorithm.**

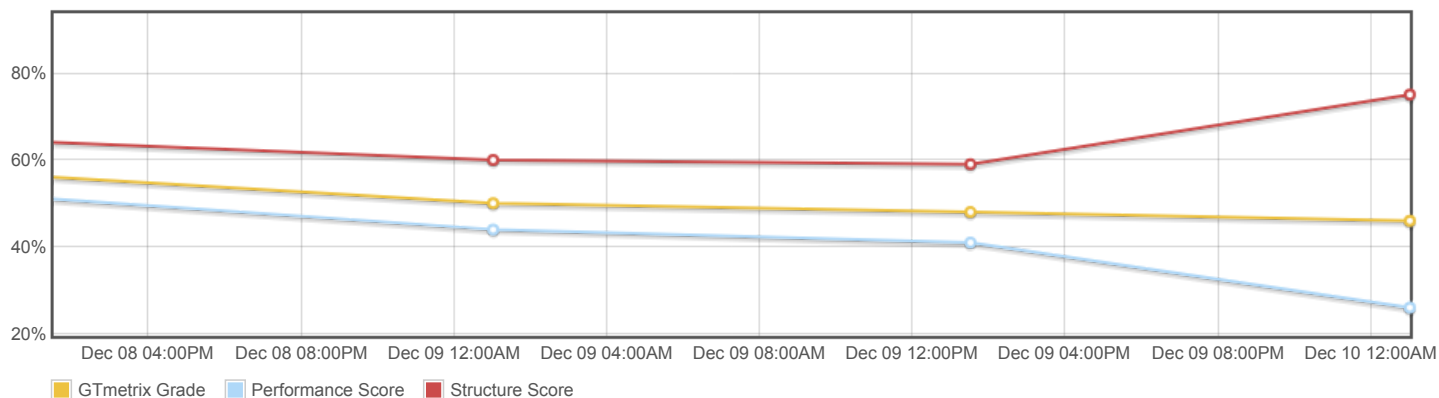
About GTmetrix

CARBON60
THE MANAGED CLOUD COMPANY

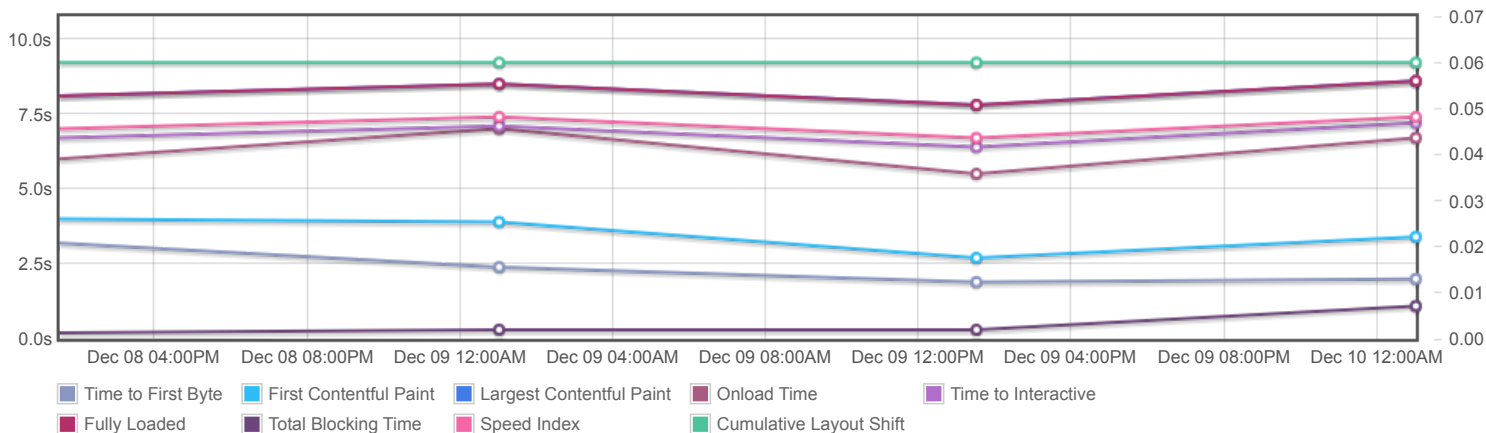
GTmetrix is developed by the good folks at **Carbon60**, a Canadian hosting company with over 27 years experience in web technology.

<https://carbon60.com/>

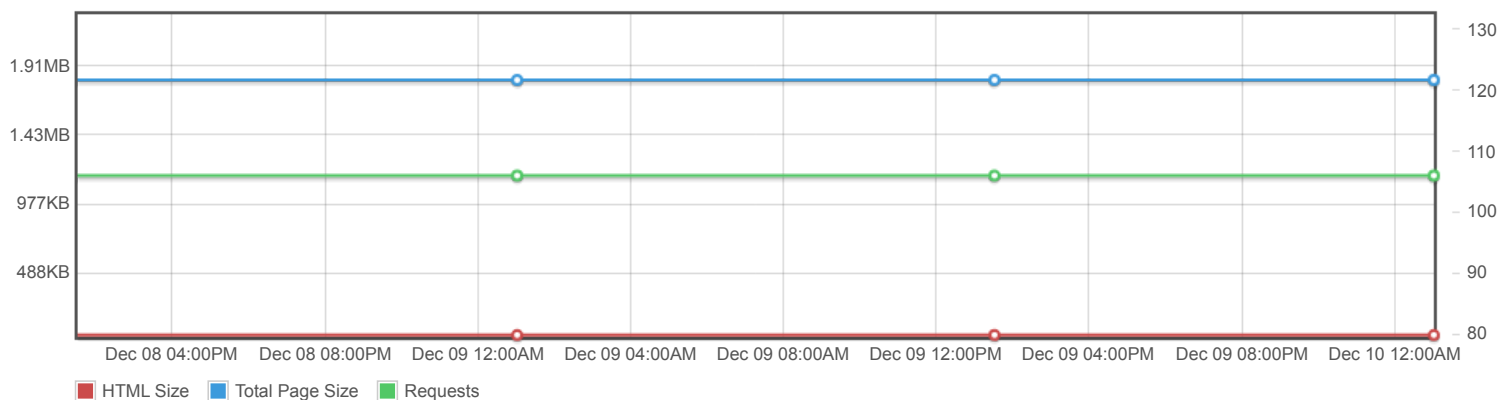
Page scores



Page metrics

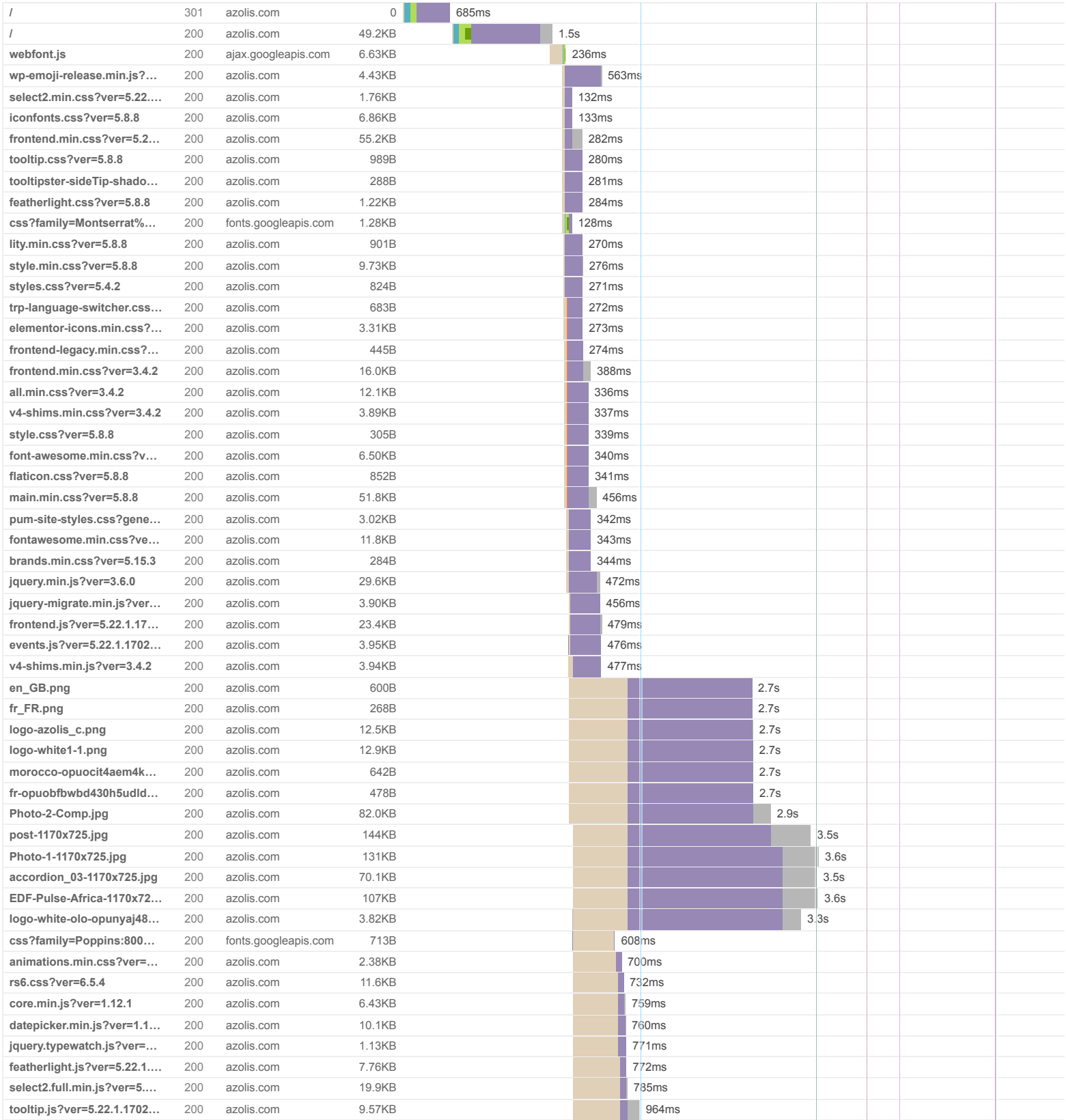


Page sizes and request counts

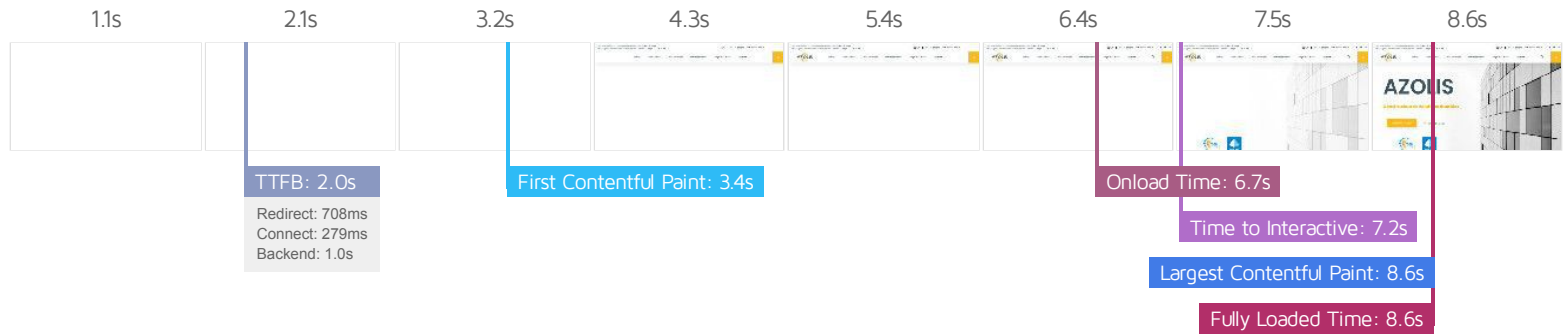


The waterfall chart displays the loading behaviour of your site in your selected browser. It can be used to discover simple issues such as 404's or more complex issues such as external resources blocking page rendering.

Accueil - AZOLIS



lity.min.js?ver=5.22.1.170...	200	azolis.com	2.51KB		817ms				
colorbrightness.min.js?v...	200	azolis.com	468B		818ms				
owl.carousel.min.js?ver=...	200	azolis.com	19.7KB		863ms				
regenerator-runtime.min.j...	200	azolis.com	2.25KB		835ms				
wp-polyfill.min.js?ver=3.1...	200	azolis.com	5.67KB		861ms				
index.js?ver=5.4.2	200	azolis.com	3.75KB		863ms				
rbtools.min.js?ver=6.5.4	200	azolis.com	44.5KB			3.5s			
rs6.min.js?ver=6.5.4	200	azolis.com	91.5KB			3.5s			
theme-addons.min.js?ver...	200	azolis.com	10.8KB		861ms				
theme.js?ver=5.8.8	200	azolis.com	595B		861ms				
perfect-scrollbar.min.js?v...	200	azolis.com	4.97KB		862ms				
pum-site-scripts.js?defer...	200	azolis.com	13.9KB		917ms				
wp-embed.min.js?ver=5.8.8	200	azolis.com	702B		918ms				
wgl_elementor_widgets.j...	200	azolis.com	579B		919ms				
jquery.appear.js?ver=1.0.0	200	azolis.com	1.22KB		935ms				
flipcount.js?ver=5.8.8	200	azolis.com	8.76KB		936ms				
imagesloaded.min.js?ver...	200	azolis.com	1.69KB		937ms				
slick.min.js?ver=1.0.0	200	azolis.com	9.47KB		986ms				
jarallax.min.js?ver=1.0.0	200	azolis.com	4.68KB		999ms				
jarallax-video.min.js?ver=...	200	azolis.com	4.76KB		1000ms				
isotope.pkgd.min.js?ver=...	200	azolis.com	9.38KB		1s				
forms.js?ver=4.8.6	200	azolis.com	2.33KB			3.3s			
wgl_elementor_sections.j...	200	azolis.com	1.99KB		1s				
wgl_elementor_column.js...	200	azolis.com	198B		1s				
webpack.runtime.min.js?...	200	azolis.com	1.97KB		1s				
frontend-modules.min.js?...	200	azolis.com	4.27KB		1s				
waypoints.min.js?ver=4.0.2	200	azolis.com	2.80KB		1.1s				
swiper.min.js?ver=5.3.6	200	azolis.com	33.2KB			3.3s			
share-link.min.js?ver=3.4.2	200	azolis.com	1.00KB			3.3s			
dialog.min.js?ver=4.8.1	200	azolis.com	3.25KB			3.3s			
frontend.min.js?ver=3.4.2	200	azolis.com	9.9KB			2.5s			
preloaded-modules.min.j...	200	azolis.com	8.52KB			2.6s			
css?family=Muli:400,700,...	200	fonts.googleapis.com	747B	39ms					
7Auwp_0qiz-afTLGLQ.woff2	200	fonts.gstatic.com	32.0KB		192ms				
pxiByp8kv8JHgFVrLCz7Z...	200	fonts.gstatic.com	7.63KB		184ms				
css?family=Montserrat:100	200	fonts.googleapis.com	559B	49ms					
Flaticon.woff2	200	azolis.com	13.7KB			2.4s			
KFOmCnqEu92Fr1Mu4mx...	200	fonts.gstatic.com	15.4KB		348ms				
fa-brands-400.woff2	200	azolis.com	75.0KB			2.5s			
dummy.png	200	azolis.com	68B			2.4s			
counter_bg1.png	200	azolis.com	285B			2.4s			
Photo-1-Comp.jpg	200	azolis.com	24.8KB			2.5s			
home_section_02_bg.png	200	azolis.com	91.1KB			2.5s			
fontawesome-webfont.wo...	200	azolis.com	75.4KB			2.2s			
Photo-3-Comp.jpg	200	azolis.com	35.2KB			2.4s			
JTUSJlg1_i6t8kCHKm459...	200	fonts.gstatic.com	32.3KB		224ms				
pxiByp8kv8JHgFVrLEj6Z1...	200	fonts.gstatic.com	7.84KB		171ms				
refill	200	azolis.com	2B				537ms		
Azolis-slider.jpg	200	azolis.com	94.5KB				181ms		
logo.png	200	azolis.com	3.85KB				180ms		
taqapro-PV-tres-300x281-...	200	azolis.com	48.3KB				181ms		
logo_azolis_c_copy_DHc...	200	azolis.com	27.1KB				209ms		
pxiByp8kv8JHgFVrLDD4Z...	200	fonts.gstatic.com	7.67KB				66ms		
106 Requests 1.81MB (4.99MB Uncompressed) Fully Loaded 8.6s (Onload 6.7s)									



Performance Metrics

First Contentful Paint How quickly content like text or images are painted onto your page. A good user experience is 0.9s or less.	Much longer than recommended 3.4s	Time to Interactive How long it takes for your page to become fully interactive. A good user experience is 2.5s or less.	Much longer than recommended 7.2s
Speed Index How quickly the contents of your page are visibly populated. A good user experience is 1.3s or less.	Much longer than recommended 7.4s	Total Blocking Time How much time is blocked by scripts during your page loading process. A good user experience is 150ms or less.	Much longer than recommended 1.1s
Largest Contentful Paint How long it takes for the largest element of content (e.g. a hero image) to be painted on your page. A good user experience is 1.2s or less.	Much longer than recommended 8.6s	Cumulative Layout Shift How much your page's layout shifts as it loads. A good user experience is a score of 0.1 or less.	Good - Nothing to do here 0.06

Browser Timings

Redirect	708ms	Connect	279ms	Backend	1.0s
TTFB	2.0s	First Paint	3.4s	DOM Int.	6.0s
DOM Loaded	6.0s	Onload	6.7s	Fully Loaded	8.6s

IMPACT	AUDIT	
High	Reduce initial server response time <small>FCP LCP</small>	Root document took 1.0s
Med-High	Avoid chaining critical requests <small>FCP LCP</small>	68 chains found
Med	Avoid an excessive DOM size <small>TBT</small>	2,008 elements
Med	Avoid long main-thread tasks <small>TBT</small>	20 long tasks found
Med	Use explicit width and height on image elements <small>CLS</small>	12 images found
Med	Use a Content Delivery Network (CDN)	88 resources found
Med-Low	Serve static assets with an efficient cache policy	Potential savings of 315KB
Med-Low	Avoid CSS @import <small>FCP LCP</small>	1 resource found
Low	Ensure text remains visible during webfont load <small>FCP LCP</small>	8 fonts found
Low	Use passive listeners to improve scrolling performance	2 event listeners not passive
Low	Allow back/forward cache restoration	1 failure reason
Low	Reduce JavaScript execution time <small>TBT</small>	1.1s spent executing JavaScript
Low	Eliminate render-blocking resources <small>FCP LCP</small>	Potential savings of 76ms
Low	Avoid enormous network payloads <small>LCP</small>	Total size was 1.82MB
Low	Avoid large layout shifts <small>CLS</small>	2 elements found
Low	Properly size images	Potential savings of 434KB
Low	Avoid multiple page redirects <small>FCP LCP</small>	Potential savings of 716ms
Low	Efficiently encode images	Potential savings of 22.3KB
Low	Reduce unused CSS <small>FCP LCP</small>	Potential savings of 153KB
Low	Serve images in next-gen formats	Potential savings of 404KB
Low	Defer offscreen images	Potential savings of 470KB
Low	Avoid non-composited animations <small>CLS</small>	30 animated elements found
Low	Minify JavaScript <small>FCP LCP</small>	Potential savings of 41.5KB

Low	Reduce unused JavaScript <small>LCP</small>	Potential savings of 116KB
N/A	Largest Contentful Paint element <small>LCP</small>	8,580 ms
N/A	Avoid serving legacy JavaScript to modern browsers <small>TBT</small>	Potential savings of 15.3KB
N/A	Minimize main-thread work <small>TBT</small>	Main-thread busy for 5.4s
N/A	Reduce the impact of third-party code <small>TBT</small>	Total size was 114KB
N/A	User Timing marks and measures	