

Performance Report for: <http://www.47quai.com/>

Report generated: Sun, Dec 10, 2023 1:02 AM +0100 (via API)
 Test Server Location: London, UK
 Using: Chrome 117.0.0.0, Lighthouse 11.0.0
 Analysis options: Adblock Plus

A	Performance 96%	Structure 89%	L. Contentful Paint 1.2s	T. Blocking Time 0ms	C. Layout Shift 0
----------	---------------------------	-------------------------	------------------------------------	--------------------------------	-----------------------------

Top Issues

IMPACT	AUDIT	
Med	Avoid enormous network payloads	Total size was 3.76MB
Med	Serve static assets with an efficient cache policy	Potential savings of 3.28MB
Med-Low	Use a Content Delivery Network (CDN)	32 resources found
Low	Eliminate render-blocking resources	Potential savings of 103ms
Low	Avoid an excessive DOM size	298 elements

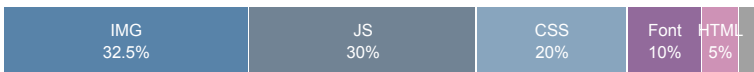
Page Details



Total Page Size - 3.74MB



Total Page Requests - 40



HTML
 JS
 CSS
 IMG
 Video
 Font
 Other

How does this affect me?

Today's web user expects a fast and seamless website experience. Delivering that fast experience can result in increased visits, conversions and overall happiness.

As if you didn't need more incentive, **Google has announced that they are using page speed in their ranking algorithm.**

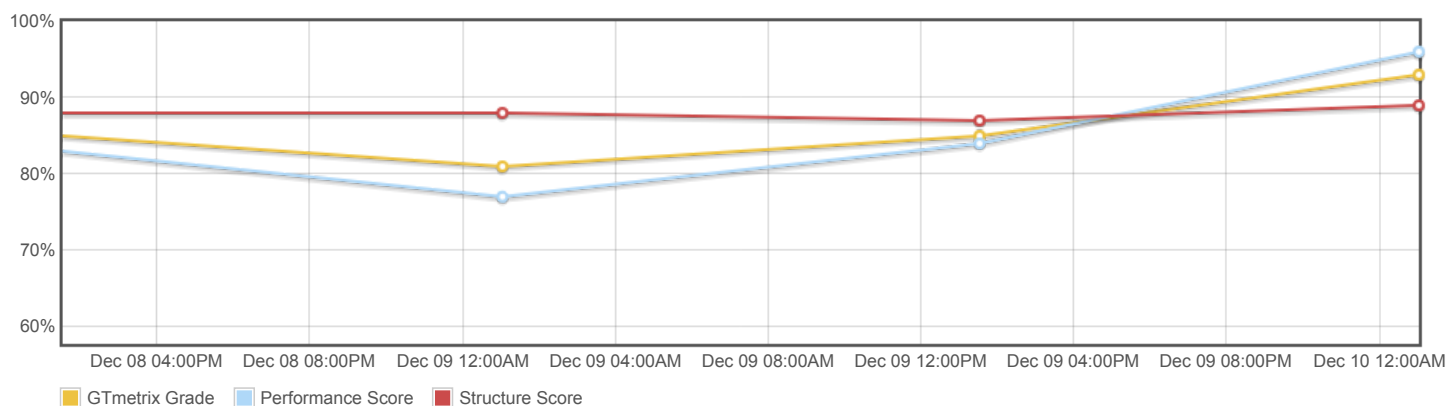
About GTmetrix

CARBON60
THE MANAGED CLOUD COMPANY

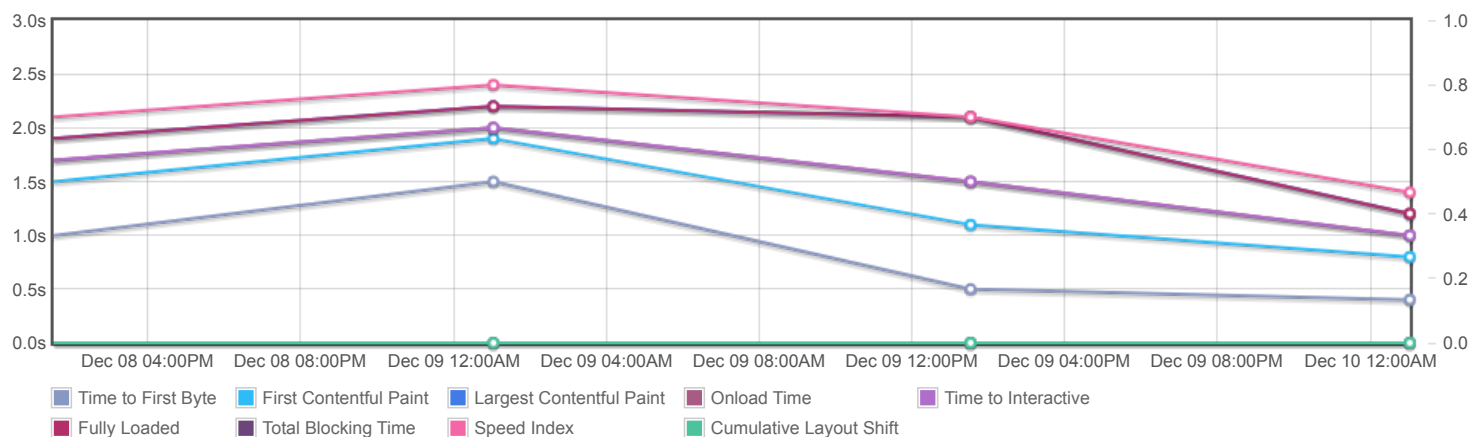
GTmetrix is developed by the good folks at **Carbon60**, a Canadian hosting company with over 27 years experience in web technology.

<https://carbon60.com/>

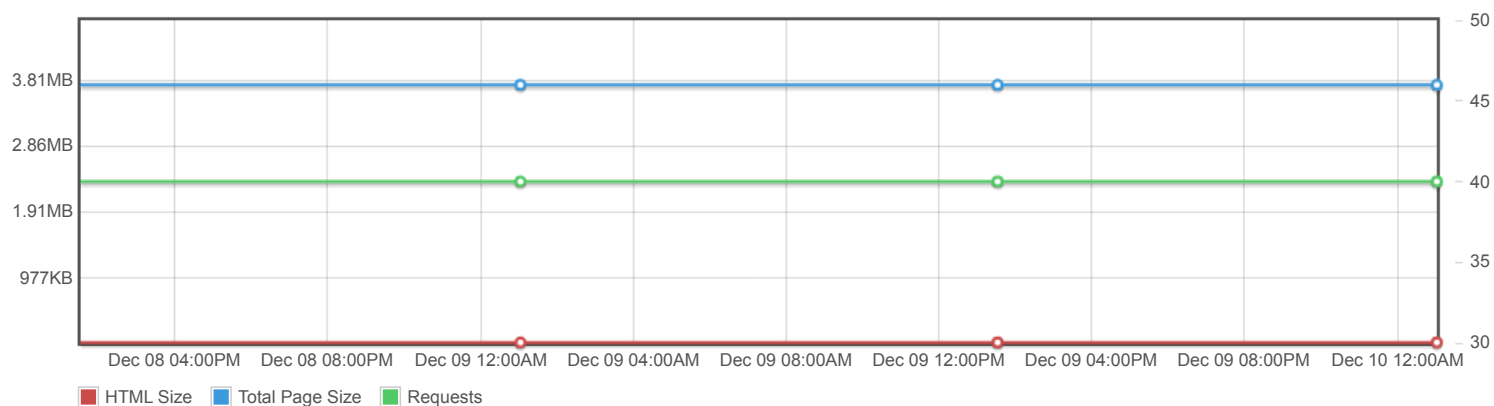
Page scores



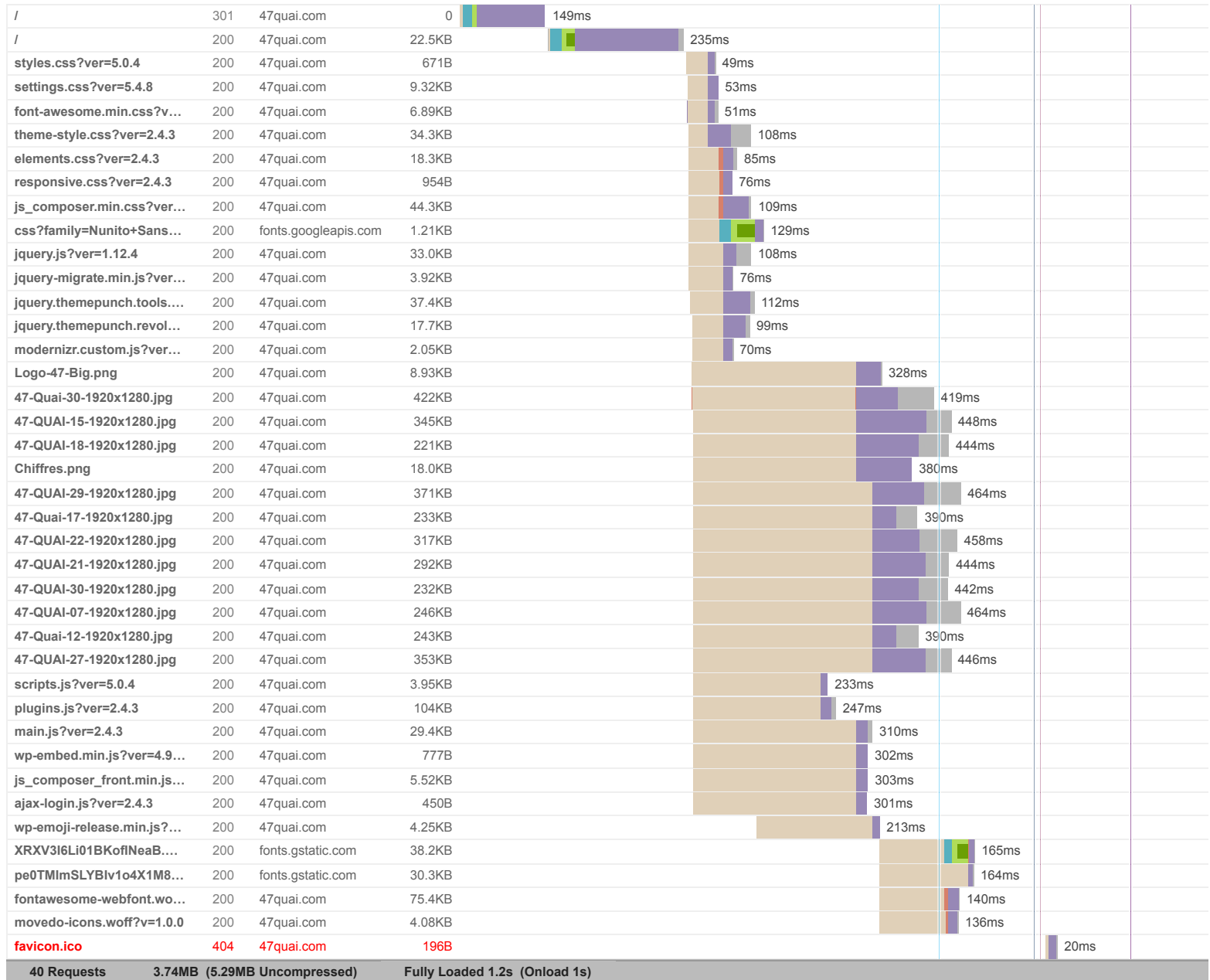
Page metrics

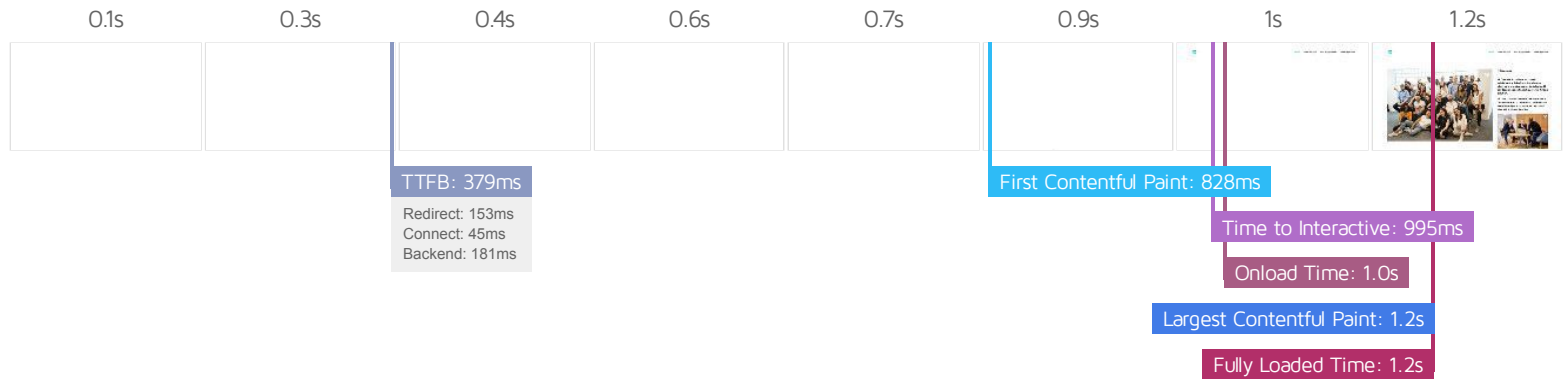


Page sizes and request counts



The waterfall chart displays the loading behaviour of your site in your selected browser. It can be used to discover simple issues such as 404's or more complex issues such as external resources blocking page rendering.

47 Quai - Pure player Salesforce



Performance Metrics

First Contentful Paint How quickly content like text or images are painted onto your page. A good user experience is 0.9s or less.	Good - Nothing to do here 828ms	Time to Interactive How long it takes for your page to become fully interactive. A good user experience is 2.5s or less.	Good - Nothing to do here 994ms
Speed Index How quickly the contents of your page are visibly populated. A good user experience is 1.3s or less.	OK, but consider improvement 1.4s	Total Blocking Time How much time is blocked by scripts during your page loading process. A good user experience is 150ms or less.	Good - Nothing to do here 0ms
Largest Contentful Paint How long it takes for the largest element of content (e.g. a hero image) to be painted on your page. A good user experience is 1.2s or less.	Good - Nothing to do here 1.2s	Cumulative Layout Shift How much your page's layout shifts as it loads. A good user experience is a score of 0.1 or less.	Good - Nothing to do here 0

Browser Timings

Redirect	153ms	Connect	45ms	Backend	181ms
TTFB	379ms	First Paint	828ms	DOM Int.	960ms
DOM Loaded	995ms	Onload	1.0s	Fully Loaded	1.2s

IMPACT	AUDIT	
Med	Avoid enormous network payloads <small>LCP</small>	Total size was 3.76MB
Med	Serve static assets with an efficient cache policy	Potential savings of 3.28MB
Med-Low	Use a Content Delivery Network (CDN)	32 resources found
Low	Eliminate render-blocking resources <small>FCP LCP</small>	Potential savings of 103ms
Low	Avoid an excessive DOM size <small>TBT</small>	298 elements
Low	Properly size images	Potential savings of 2.98MB
Low	Avoid multiple page redirects <small>FCP LCP</small>	Potential savings of 149ms
Low	Efficiently encode images	Potential savings of 4.48KB
Low	Ensure text remains visible during webfont load <small>FCP LCP</small>	4 fonts found
Low	Avoid long main-thread tasks <small>TBT</small>	2 long tasks found
Low	Reduce JavaScript execution time <small>TBT</small>	267ms spent executing JavaScript
Low	Reduce unused CSS <small>FCP LCP</small>	Potential savings of 113KB
Low	Serve images in next-gen formats	Potential savings of 1.60MB
Low	Reduce initial server response time <small>FCP LCP</small>	Root document took 180ms
Low	Minify CSS <small>FCP LCP</small>	Potential savings of 12.7KB
Low	Minify JavaScript <small>FCP LCP</small>	Potential savings of 19.5KB
Low	Avoid chaining critical requests <small>FCP LCP</small>	20 chains found
Low	Reduce unused JavaScript <small>LCP</small>	Potential savings of 135KB
N/A	Largest Contentful Paint element <small>LCP</small>	1,160 ms
N/A	Avoid serving legacy JavaScript to modern browsers <small>TBT</small>	Potential savings of 15.8KB
N/A	Avoid large layout shifts <small>CLS</small>	5 elements found
N/A	Minimize main-thread work <small>TBT</small>	Main-thread busy for 778ms
N/A	Reduce the impact of third-party code <small>TBT</small>	Total size was 70.4KB

