



Performance Report for:

http://www.looking-for-soccer.com/

Report generated: Sun, Dec 10, 2023 1:02 AM +0100 (via API)
Test Server Location: London, UK
Using: Chrome 117.0.0.0, Lighthouse 11.0.0
Analysis options: Adblock Plus

	Performance 68%	Structure 92%	L. Contentful Paint 3.0s	T. Blocking Time 0ms	C. Layout Shift 0.02
--	--------------------	------------------	-----------------------------	-------------------------	-------------------------

Top Issues

IMPACT	AUDIT	
Med	Serve static assets with an efficient cache policy	Potential savings of 687KB
Med-Low	Avoid multiple page redirects <small>FCP LCP</small>	Potential savings of 872ms
Low	Avoid an excessive DOM size <small>TBT</small>	945 elements
Low	Avoid chaining critical requests <small>FCP LCP</small>	26 chains found
Low	Avoid enormous network payloads <small>LCP</small>	Total size was 1.06MB

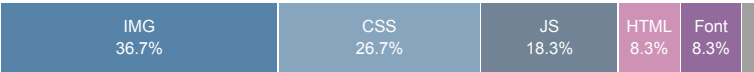
Page Details



Total Page Size - 1.19MB



Total Page Requests - 60



How does this affect me?

Today's web user expects a fast and seamless website experience. Delivering that fast experience can result in increased visits, conversions and overall happiness.

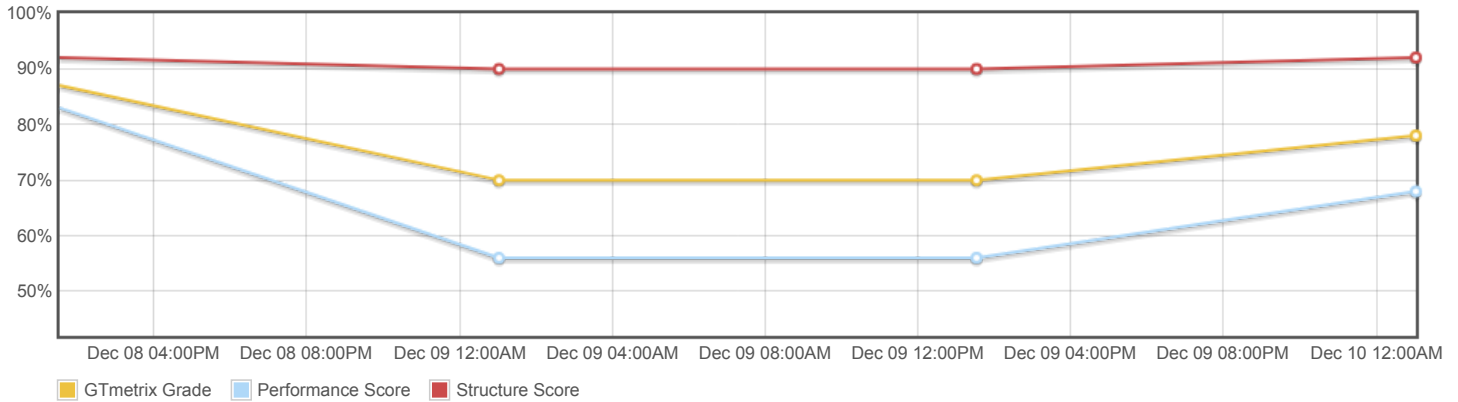
As if you didn't need more incentive, **Google has announced that they are using page speed in their ranking algorithm.**

About GTmetrix

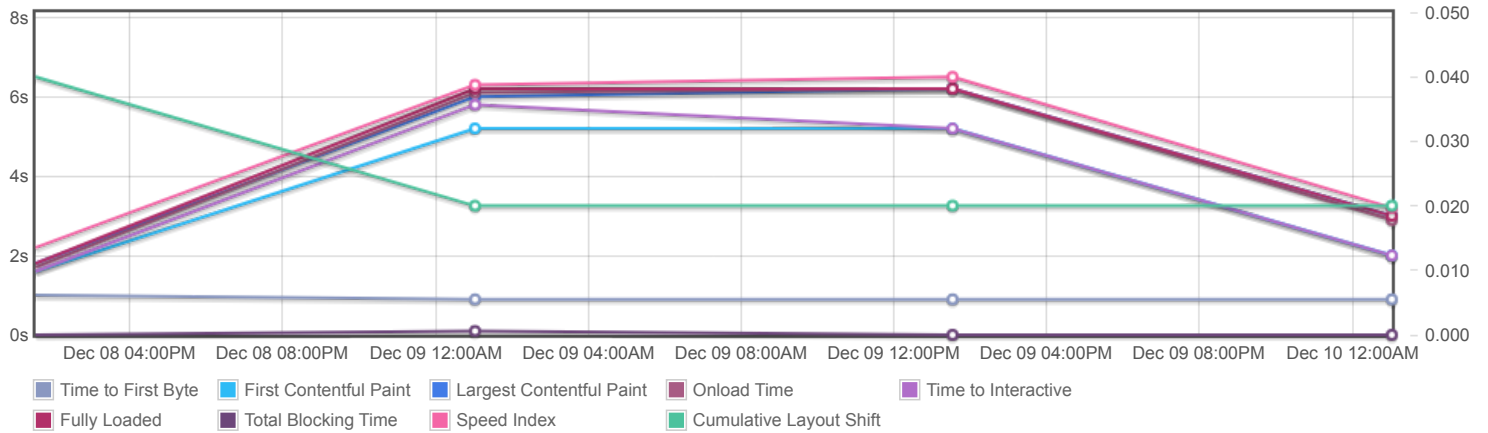
GTmetrix is developed by the good folks at **CARBON60**, a Canadian hosting company with over 27 years experience in web technology.

<https://carbon60.com/>

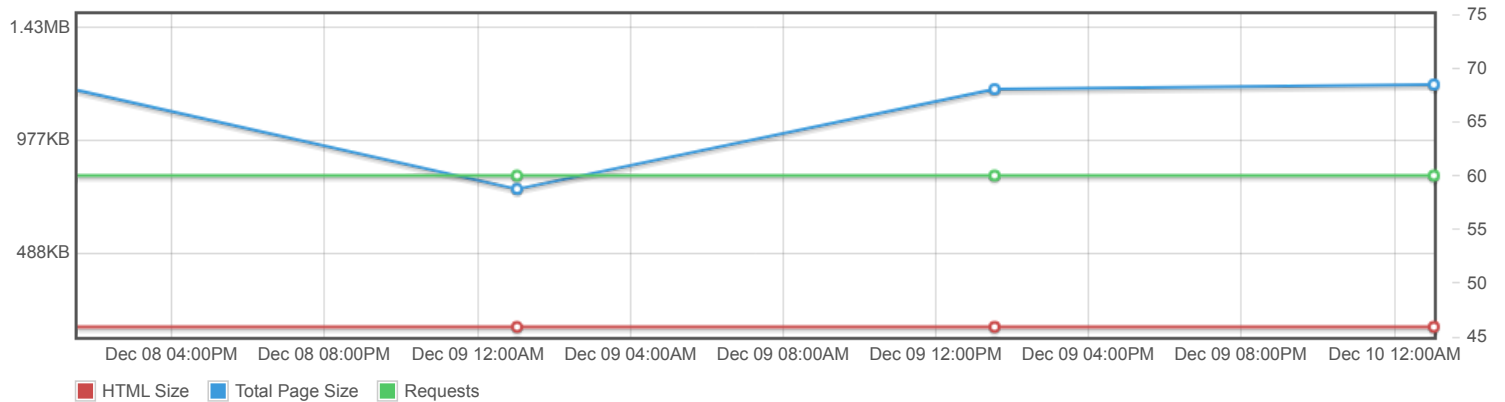
Page scores



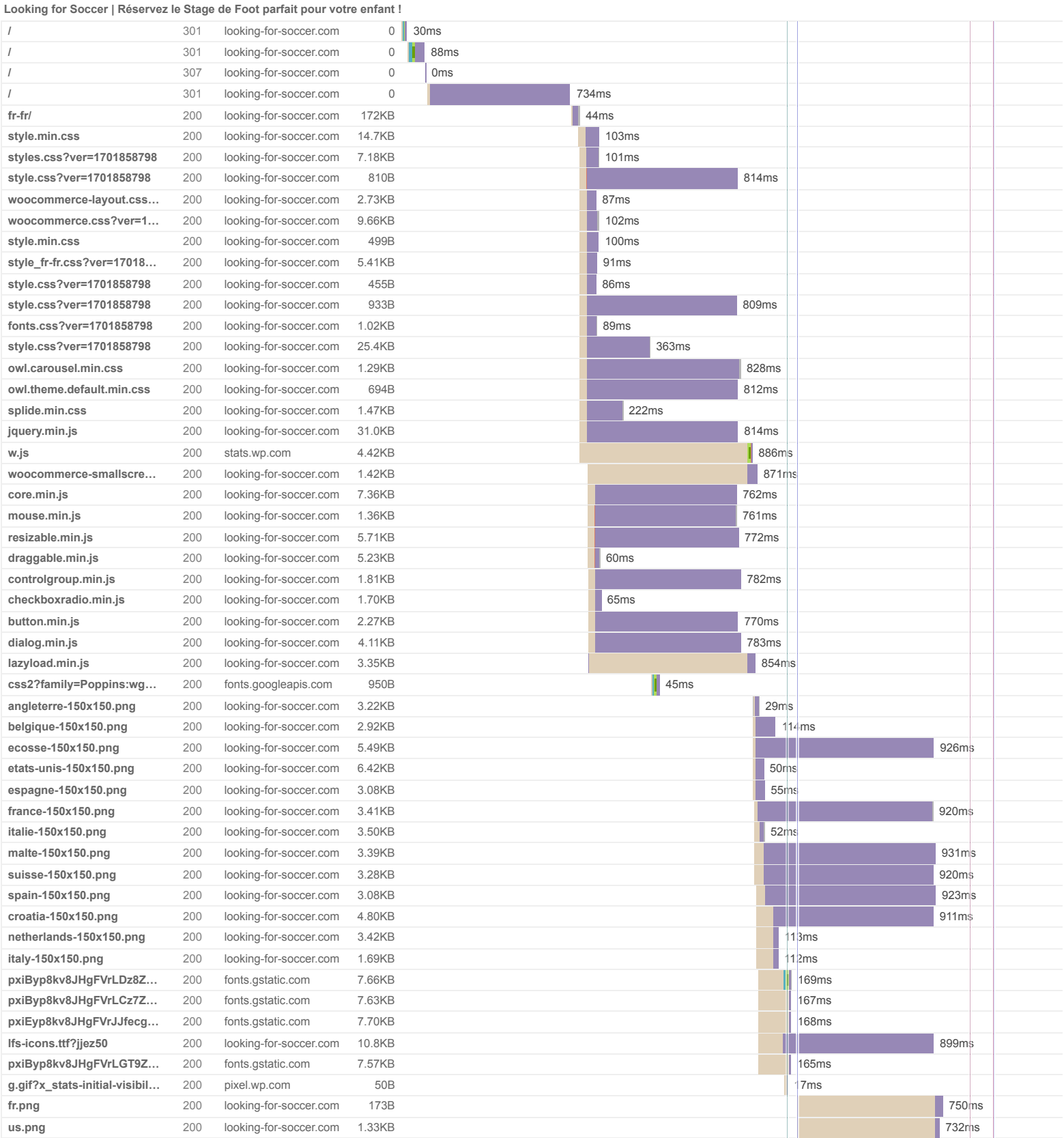
Page metrics



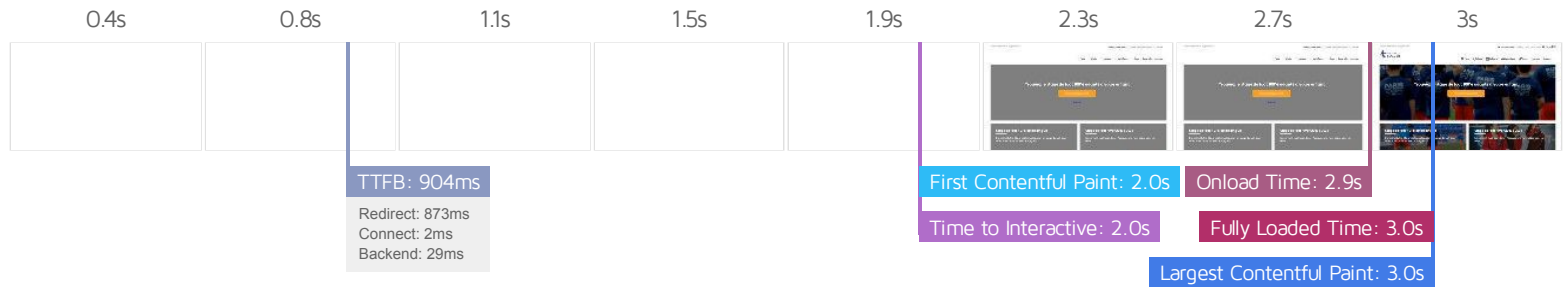
Page sizes and request counts



The waterfall chart displays the loading behaviour of your site in your selected browser. It can be used to discover simple issues such as 404's or more complex issues such as external resources blocking page rendering.



gb.png	200	looking-for-soccer.com	1.44KB	<div></div>	750ms
es%20(1).png	200	looking-for-soccer.com	712B	<div></div>	731ms
looking-for-soccer-stages...	200	looking-for-soccer.com	9.9KB	<div></div>	746ms
Camp-de-foot-PSG.jpg	200	looking-for-soccer.com	150KB	<div></div>	841ms
Stage-Foot-PSG-USA.jpg	200	looking-for-soccer.com	135KB	<div></div>	804ms
best-football-camps-girls-...	200	looking-for-soccer.com	510KB	<div></div>	854ms
ifs_favicon-100x100.png	200	looking-for-soccer.com	3.11KB	<div></div>	43ms
60 Requests 1.19MB (1.84MB Uncompressed) Fully Loaded 3s (Onload 2.9s)					



Performance Metrics

First Contentful Paint How quickly content like text or images are painted onto your page. A good user experience is 0.9s or less.	Much longer than recommended 2.0s	Time to Interactive How long it takes for your page to become fully interactive. A good user experience is 2.5s or less.	Good - Nothing to do here 2.0s
Speed Index How quickly the contents of your page are visibly populated. A good user experience is 1.3s or less.	Much longer than recommended 3.2s	Total Blocking Time How much time is blocked by scripts during your page loading process. A good user experience is 150ms or less.	Good - Nothing to do here 0ms
Largest Contentful Paint How long it takes for the largest element of content (e.g. a hero image) to be painted on your page. A good user experience is 1.2s or less.	Much longer than recommended 3.0s	Cumulative Layout Shift How much your page's layout shifts as it loads. A good user experience is a score of 0.1 or less.	Good - Nothing to do here 0.02

Browser Timings

Redirect	873ms	Connect	2ms	Backend	29ms
TTFB	904ms	DOM Int.	2.0s	DOM Loaded	2.0s
First Paint	2.0s	Onload	2.9s	Fully Loaded	3.0s

IMPACT	AUDIT	
Med	Serve static assets with an efficient cache policy	Potential savings of 687KB
Med-Low	Avoid multiple page redirects <small>FCP LCP</small>	Potential savings of 872ms
Low	Avoid an excessive DOM size <small>TBT</small>	945 elements
Low	Avoid chaining critical requests <small>FCP LCP</small>	26 chains found
Low	Avoid enormous network payloads <small>LCP</small>	Total size was 1.06MB
Low	Properly size images	Potential savings of 450KB
Low	Preload Largest Contentful Paint image <small>LCP</small>	11ms
Low	Efficiently encode images	Potential savings of 442KB
Low	Avoid long main-thread tasks <small>TBT</small>	1 long task found
Low	Reduce unused CSS <small>FCP LCP</small>	Potential savings of 37.1KB
Low	Serve images in next-gen formats	Potential savings of 634KB
Low	Minify JavaScript <small>FCP LCP</small>	Potential savings of 12.0KB
Low	Reduce unused JavaScript <small>LCP</small>	Potential savings of 22.9KB
N/A	Largest Contentful Paint element <small>LCP</small>	3,040 ms
N/A	Eliminate render-blocking resources <small>FCP LCP</small>	Potential savings of 11ms
N/A	Reduce JavaScript execution time <small>TBT</small>	50ms spent executing JavaScript
N/A	Reduce initial server response time <small>FCP LCP</small>	Root document took 28ms
N/A	Avoid serving legacy JavaScript to modern browsers <small>TBT</small>	Potential savings of 20.8KB
N/A	Avoid large layout shifts <small>CLS</small>	5 elements found
N/A	Minimize main-thread work <small>TBT</small>	Main-thread busy for 551ms
N/A	Reduce the impact of third-party code <small>TBT</small>	Total size was 36.9KB
N/A	User Timing marks and measures	