



## Performance Report for: <http://www.ateliERGallus.com/>

Report generated: Sun, Dec 10, 2023 1:02 AM +0100 (via API)  
 Test Server Location: London, UK  
 Using: Chrome 117.0.0.0, Lighthouse 11.0.0  
 Analysis options: Adblock Plus

<b>A</b>	Performance <b>92%</b>	Structure <b>91%</b>	L. Contentful Paint <b>1.4s</b>	T. Blocking Time <b>0ms</b>	C. Layout Shift <b>0</b>
----------	---------------------------	-------------------------	------------------------------------	--------------------------------	-----------------------------

### Top Issues

IMPACT	AUDIT	
High	Eliminate render-blocking resources <small>FCP LCP</small>	Potential savings of 2.3s
Med	Serve static assets with an efficient cache policy	Potential savings of 507KB
Low	Ensure text remains visible during webfont load <small>FCP LCP</small>	4 fonts found
Low	Avoid chaining critical requests <small>FCP LCP</small>	31 chains found
Low	Avoid an excessive DOM size <small>TBT</small>	331 elements

### Page Details



Total Page Size - 927KB



Total Page Requests - 45



HTML JS CSS IMG Video Font Other

### How does this affect me?

Today's web user expects a fast and seamless website experience. Delivering that fast experience can result in increased visits, conversions and overall happiness.

As if you didn't need more incentive, **Google has announced that they are using page speed in their ranking algorithm.**

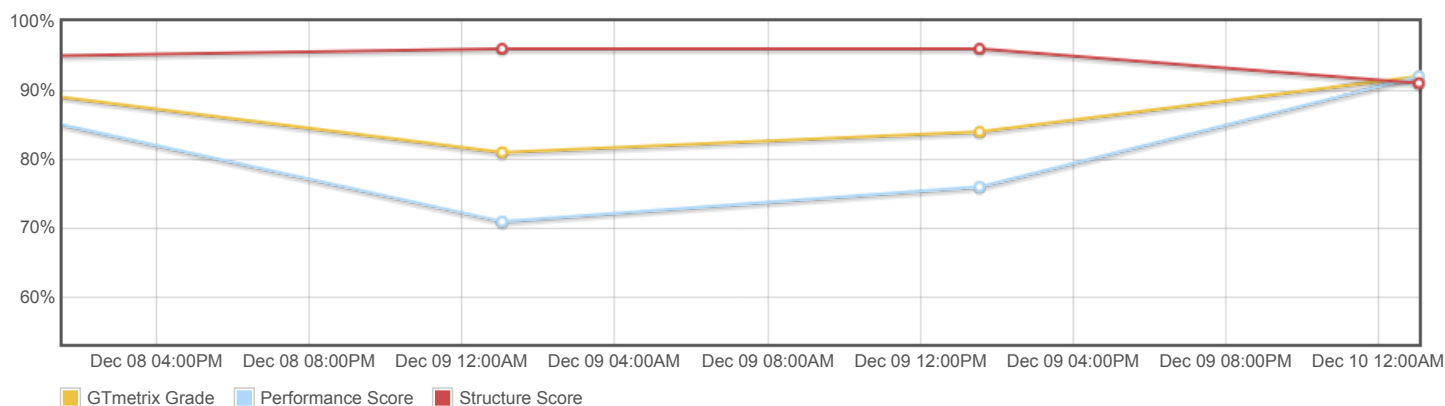
### About GTmetrix

**CARBON60**  
THE MANAGED CLOUD COMPANY

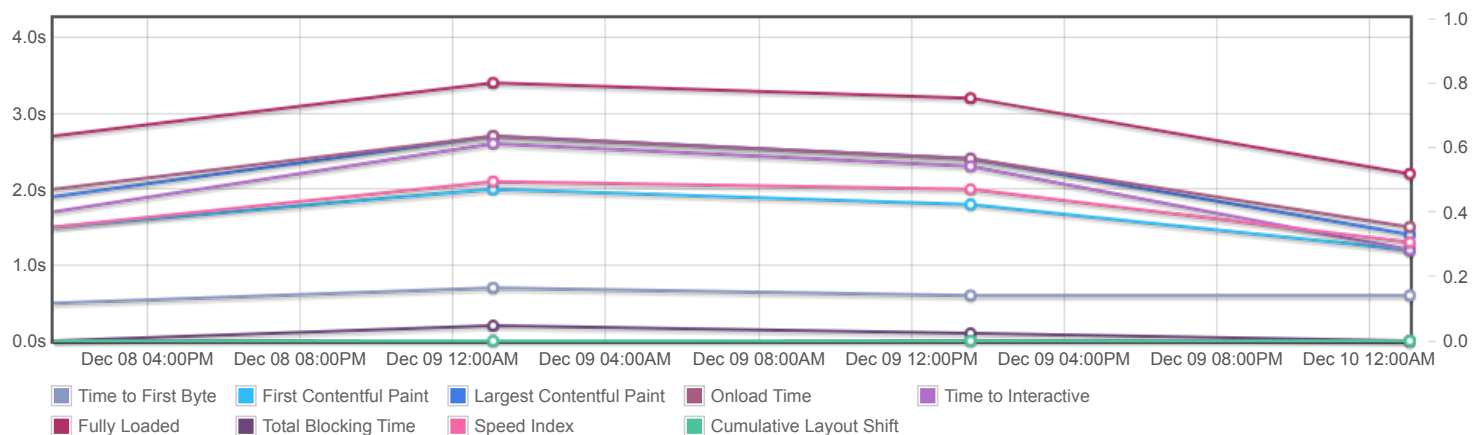
GTmetrix is developed by the good folks at **Carbon60**, a Canadian hosting company with over 27 years experience in web technology.

<https://carbon60.com/>

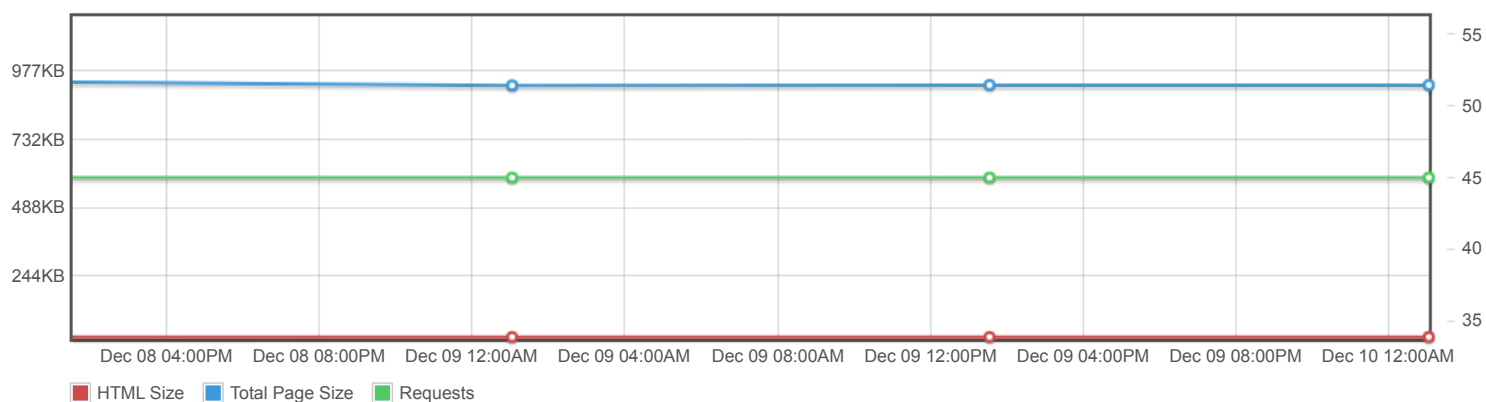
## Page scores



## Page metrics

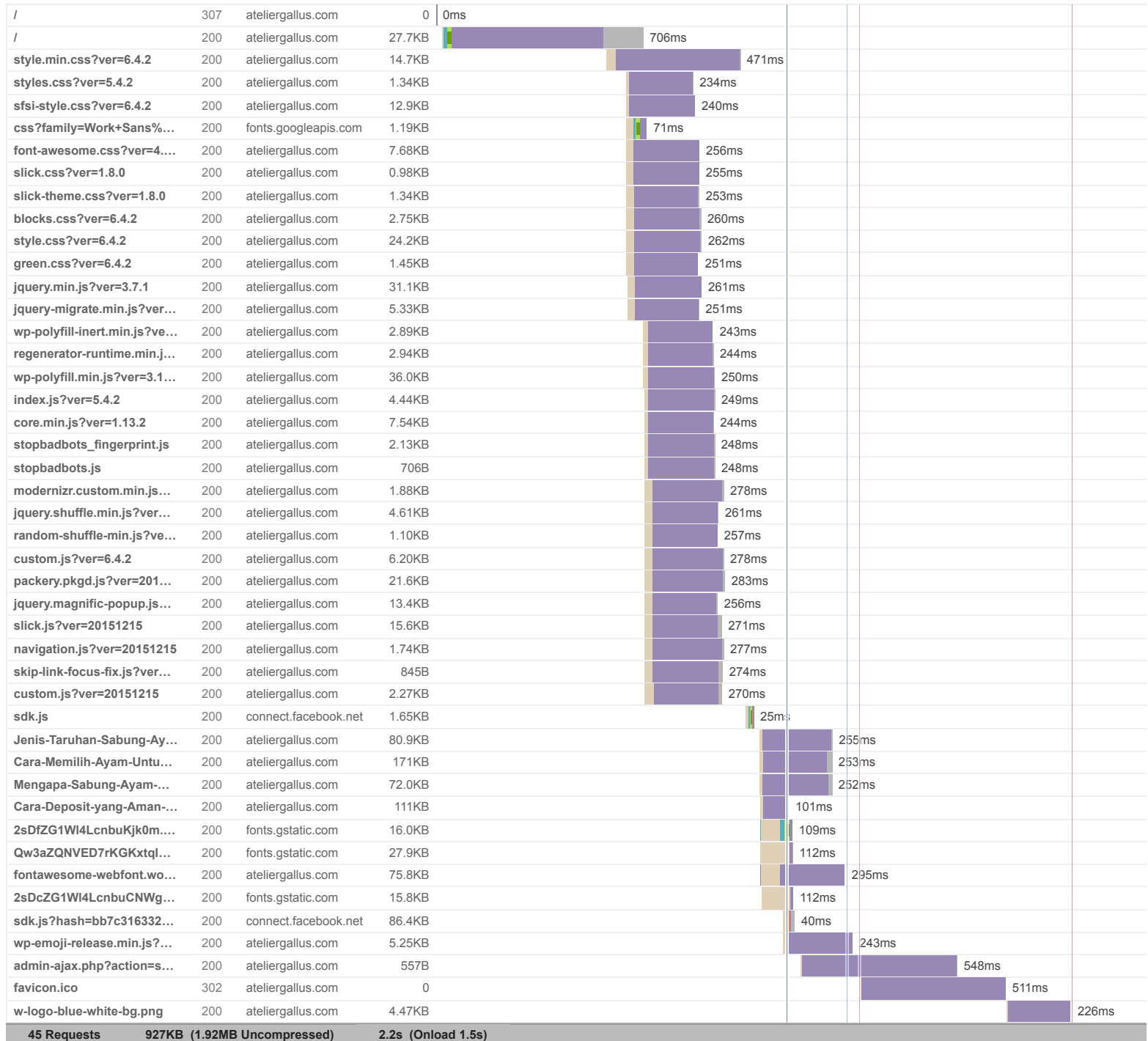


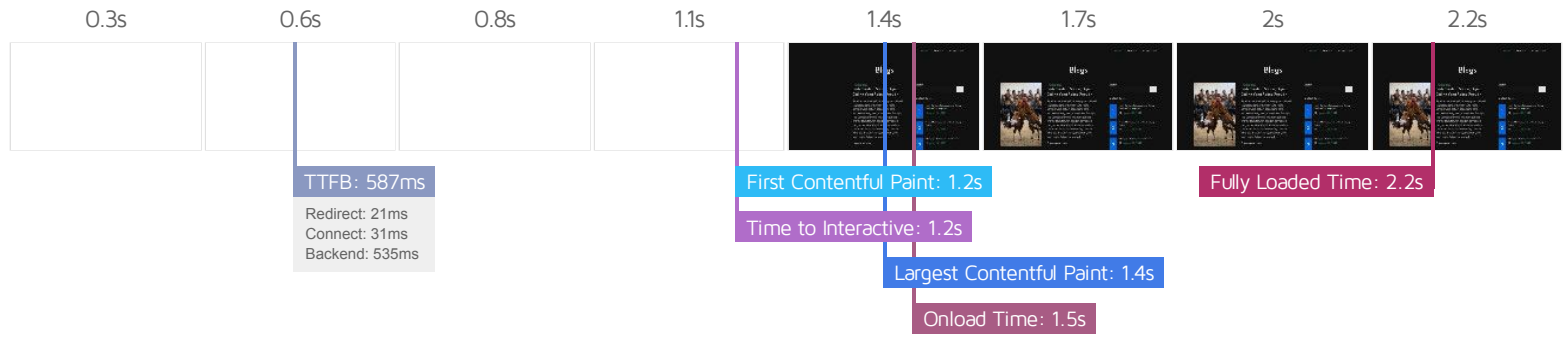
## Page sizes and request counts



The waterfall chart displays the loading behaviour of your site in your selected browser. It can be used to discover simple issues such as 404's or more complex issues such as external resources blocking page rendering.

## Kumpulan Judi Online Terbaik – Komunitas Judi Indonesia





## Performance Metrics

<b>First Contentful Paint</b> How quickly content like text or images are painted onto your page. A good user experience is 0.9s or less.	Longer than recommended <b>1.2s</b>	<b>Time to Interactive</b> How long it takes for your page to become fully interactive. A good user experience is 2.5s or less.	Good - Nothing to do here <b>1.2s</b>
<b>Speed Index</b> How quickly the contents of your page are visibly populated. A good user experience is 1.3s or less.	Good - Nothing to do here <b>1.3s</b>	<b>Total Blocking Time</b> How much time is blocked by scripts during your page loading process. A good user experience is 150ms or less.	Good - Nothing to do here <b>0ms</b>
<b>Largest Contentful Paint</b> How long it takes for the largest element of content (e.g. a hero image) to be painted on your page. A good user experience is 1.2s or less.	OK, but consider improvement <b>1.4s</b>	<b>Cumulative Layout Shift</b> How much your page's layout shifts as it loads. A good user experience is a score of 0.1 or less.	Good - Nothing to do here <b>0</b>

## Browser Timings

Redirect	21ms	Connect	31ms	Backend	535ms
TTFB	587ms	DOM Int.	1.2s	DOM Loaded	1.2s
First Paint	1.2s	Onload	1.5s	Fully Loaded	2.2s

IMPACT	AUDIT	
High	<b>Eliminate render-blocking resources</b> <small>FCP LCP</small>	Potential savings of 2.3s
Med	<b>Serve static assets with an efficient cache policy</b>	Potential savings of 507KB
Low	<b>Ensure text remains visible during webfont load</b> <small>FCP LCP</small>	4 fonts found
Low	<b>Avoid chaining critical requests</b> <small>FCP LCP</small>	31 chains found
Low	<b>Avoid an excessive DOM size</b> <small>TBT</small>	331 elements
Low	<b>Avoid enormous network payloads</b> <small>LCP</small>	Total size was 930KB
Low	<b>Avoid multiple page redirects</b> <small>FCP LCP</small>	Potential savings of 21ms
Low	<b>Efficiently encode images</b>	Potential savings of 14.0KB
Low	<b>Avoid long main-thread tasks</b> <small>TBT</small>	1 long task found
Low	<b>Reduce JavaScript execution time</b> <small>TBT</small>	104ms spent executing JavaScript
Low	<b>Reduce unused CSS</b> <small>FCP LCP</small>	Potential savings of 48.2KB
Low	<b>Serve images in next-gen formats</b>	Potential savings of 193KB
Low	<b>Reduce initial server response time</b> <small>FCP LCP</small>	Root document took 534ms
Low	<b>Minify CSS</b> <small>FCP LCP</small>	Potential savings of 9.45KB
Low	<b>Minify JavaScript</b> <small>FCP LCP</small>	Potential savings of 31.4KB
Low	<b>Reduce unused JavaScript</b> <small>LCP</small>	Potential savings of 62.4KB
N/A	<b>Largest Contentful Paint element</b> <small>LCP</small>	1,440 ms
N/A	<b>Avoid serving legacy JavaScript to modern browsers</b> <small>TBT</small>	Potential savings of 8.52KB
N/A	<b>Avoid large layout shifts</b> <small>CLS</small>	5 elements found
N/A	<b>Minimize main-thread work</b> <small>TBT</small>	Main-thread busy for 488ms
N/A	<b>Reduce the impact of third-party code</b> <small>TBT</small>	Total size was 151KB
N/A	<b>User Timing marks and measures</b>	