



## Performance Report for: <http://www.mkdgroupe.com/>

Report generated: Sun, Dec 10, 2023 1:03 AM +0100 (via API)  
 Test Server Location: London, UK  
 Using: Chrome 117.0.0.0, Lighthouse 11.0.0  
 Analysis options: Adblock Plus

<b>B</b>	Performance <b>85%</b>	Structure <b>86%</b>	L. Contentful Paint <b>1.8s</b>	T. Blocking Time <b>0ms</b>	C. Layout Shift <b>0</b>
----------	---------------------------	-------------------------	------------------------------------	--------------------------------	-----------------------------

### Top Issues

IMPACT	AUDIT	
Med	<b>Serve static assets with an efficient cache policy</b>	Potential savings of 2.38MB
Med-Low	<b>Use a Content Delivery Network (CDN)</b>	29 resources found
Med-Low	<b>Avoid enormous network payloads</b> <small>LCP</small>	Total size was 3.23MB
Med-Low	<b>Avoid multiple page redirects</b> <small>FCP LCP</small>	Potential savings of 928ms
Low	<b>Avoid an excessive DOM size</b> <small>TBT</small>	578 elements

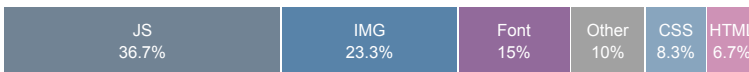
### Page Details



Total Page Size - 3.22MB



Total Page Requests - 60



HTML
JS
CSS
IMG
Video
Font
Other

### How does this affect me?

Today's web user expects a fast and seamless website experience. Delivering that fast experience can result in increased visits, conversions and overall happiness.

As if you didn't need more incentive, **Google has announced that they are using page speed in their ranking algorithm.**

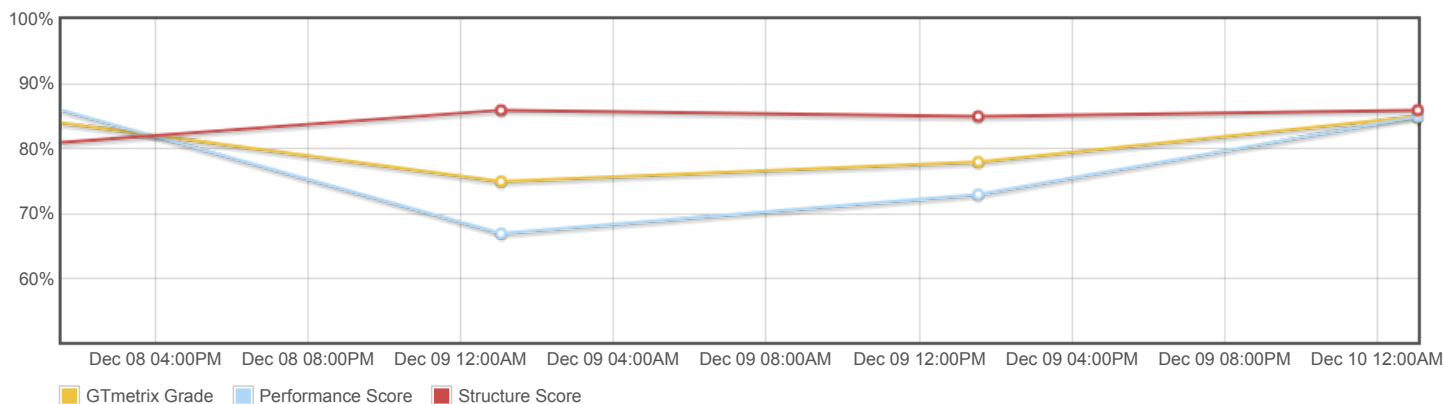
### About GTmetrix

**CARBON60**  
THE MANAGED CLOUD COMPANY

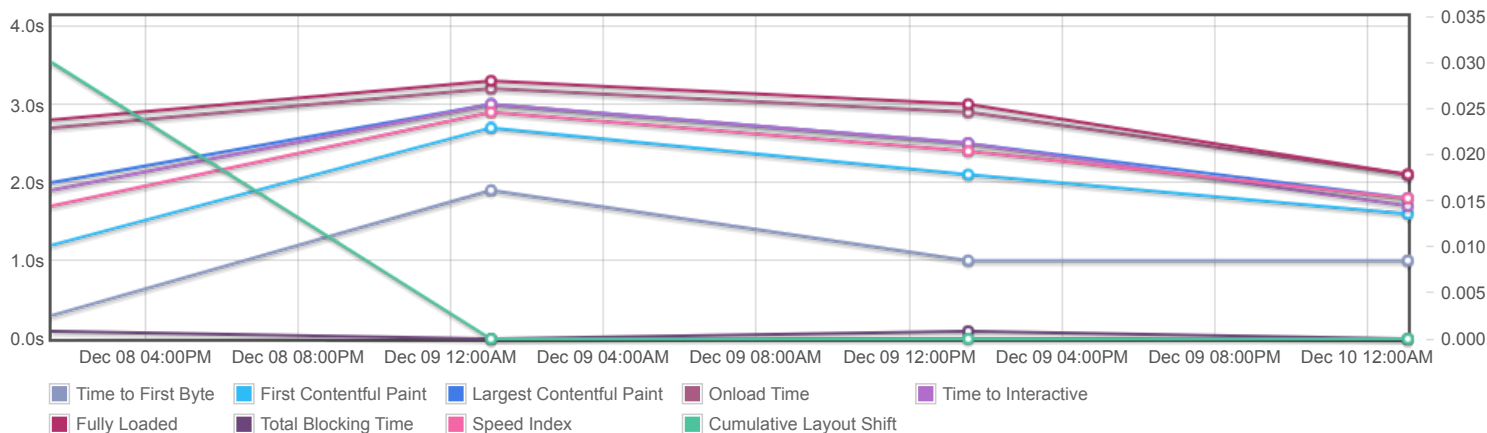
GTmetrix is developed by the good folks at **Carbon60**, a Canadian hosting company with over 27 years experience in web technology.

<https://carbon60.com/>

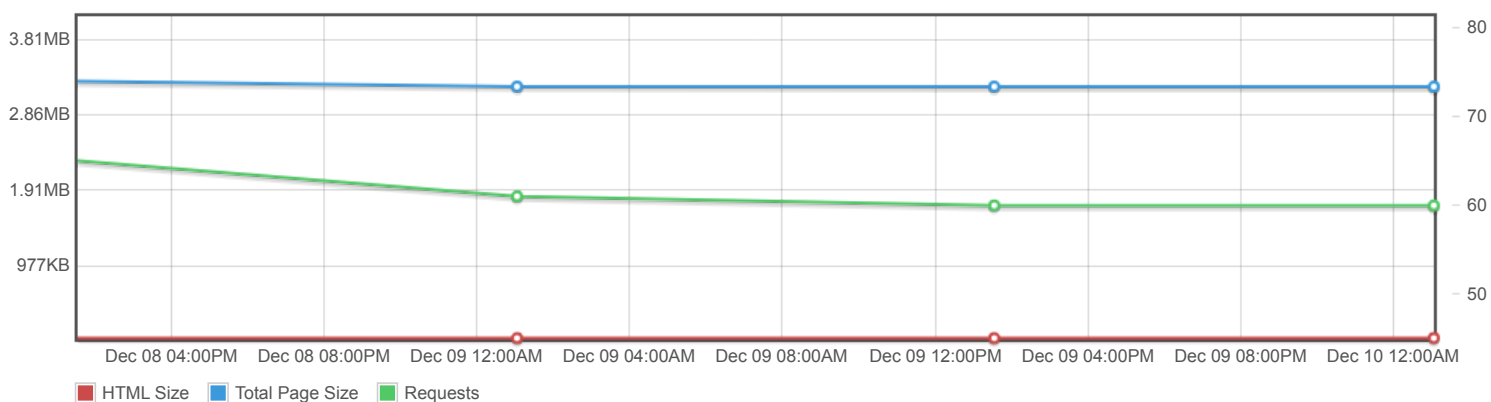
## Page scores



## Page metrics

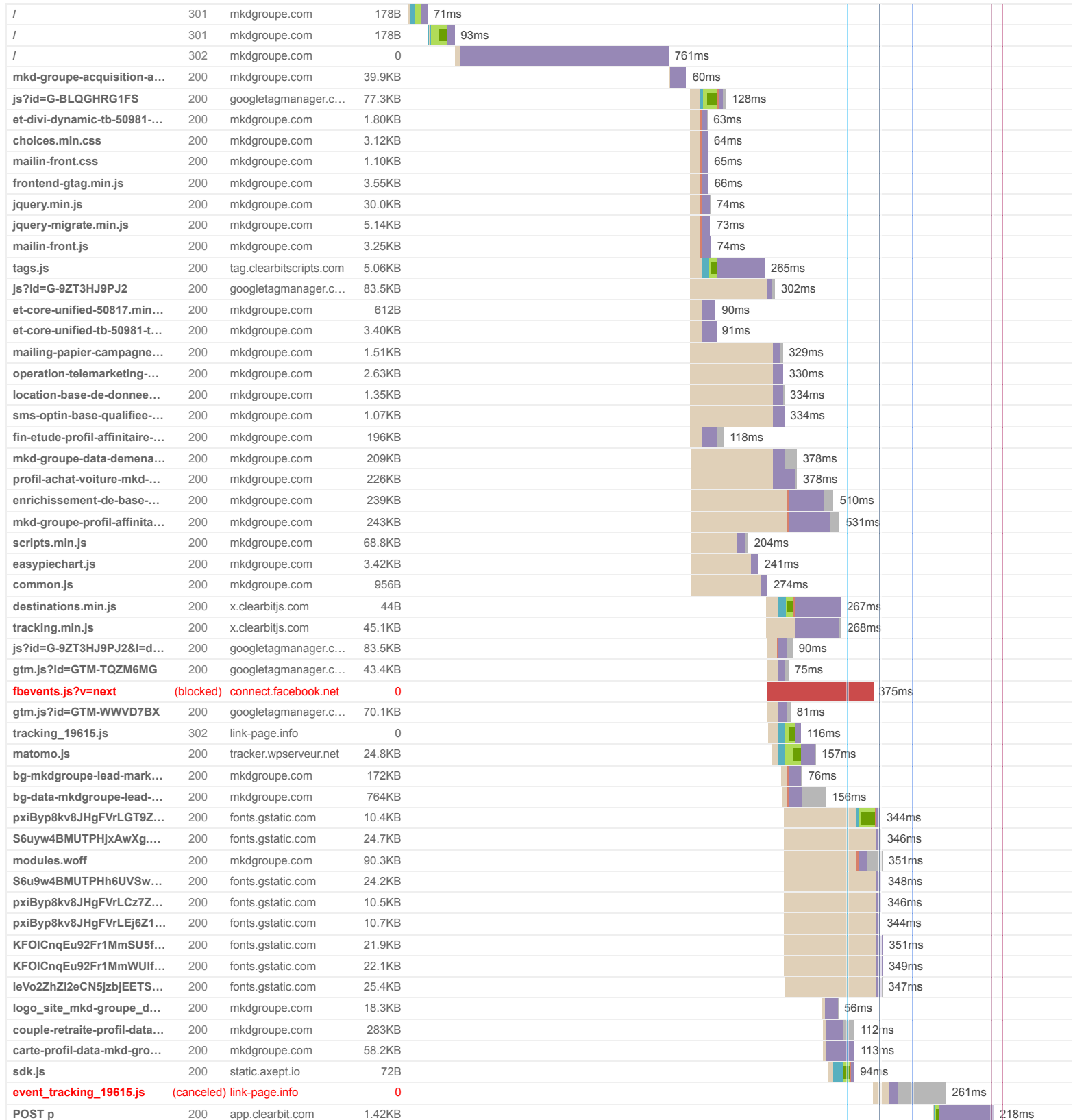


## Page sizes and request counts

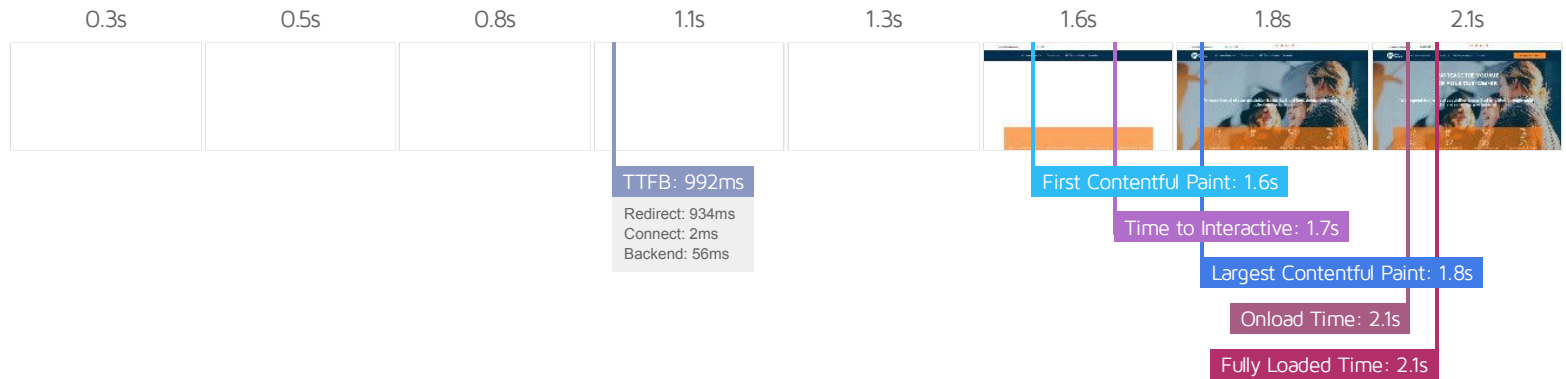


The waterfall chart displays the loading behaviour of your site in your selected browser. It can be used to discover simple issues such as 404's or more complex issues such as external resources blocking page rendering.

## MKD Group | Home Page | Direct Marketing Specialist



POST matomo.php?actio...	204	tracker.wpserveur.net	0						72ms
analytics.js	200	google-analytics.com	20.5KB						38ms
loader.js	200	gstatic.com	1.31KB						36ms
614980698?random=1702...	(blocked)	googleads.g.doublec...	0						7ms
call-tracking_7.js	200	gstatic.com	18.3KB						9ms
wcm?cc=ZZ&dn=0611428...	(blocked)	googleadservices.com	0						9ms
cropped-favicon_mkd-32...	200	mkgroupe.com	506B						30ms
60 Requests 3.22MB (4.64MB Uncompressed) Fully Loaded 2.1s (Onload 2.1s)									



## Performance Metrics

<b>First Contentful Paint</b> How quickly content like text or images are painted onto your page. A good user experience is 0.9s or less.	Longer than recommended <b>1.6s</b>	<b>Time to Interactive</b> How long it takes for your page to become fully interactive. A good user experience is 2.5s or less.	Good - Nothing to do here <b>1.7s</b>
<b>Speed Index</b> How quickly the contents of your page are visibly populated. A good user experience is 1.3s or less.	Longer than recommended <b>1.8s</b>	<b>Total Blocking Time</b> How much time is blocked by scripts during your page loading process. A good user experience is 150ms or less.	Good - Nothing to do here <b>0ms</b>
<b>Largest Contentful Paint</b> How long it takes for the largest element of content (e.g. a hero image) to be painted on your page. A good user experience is 1.2s or less.	Longer than recommended <b>1.8s</b>	<b>Cumulative Layout Shift</b> How much your page's layout shifts as it loads. A good user experience is a score of 0.1 or less.	Good - Nothing to do here <b>0</b>

## Browser Timings

Redirect	934ms	Connect	2ms	Backend	56ms
TTFB	992ms	First Paint	1.6s	DOM Int.	1.7s
DOM Loaded	1.7s	Onload	2.1s	Fully Loaded	2.1s

IMPACT	AUDIT	
Med	<b>Serve static assets with an efficient cache policy</b>	Potential savings of 2.38MB
Med-Low	<b>Use a Content Delivery Network (CDN)</b>	29 resources found
Med-Low	<b>Avoid enormous network payloads</b> <small>LCP</small>	Total size was 3.23MB
Med-Low	<b>Avoid multiple page redirects</b> <small>FCP</small> <small>LCP</small>	Potential savings of 928ms
Low	<b>Avoid an excessive DOM size</b> <small>TBT</small>	578 elements
Low	<b>Properly size images</b>	Potential savings of 1.24MB
Low	<b>Eliminate render-blocking resources</b> <small>FCP</small> <small>LCP</small>	Potential savings of 26ms
Low	<b>Reduce JavaScript execution time</b> <small>TBT</small>	629ms spent executing JavaScript
Low	<b>Avoid chaining critical requests</b> <small>FCP</small> <small>LCP</small>	20 chains found
Low	<b>Avoid long main-thread tasks</b> <small>TBT</small>	2 long tasks found
Low	<b>Serve images in next-gen formats</b>	Potential savings of 2.02MB
Low	<b>Minify JavaScript</b> <small>FCP</small> <small>LCP</small>	Potential savings of 12.0KB
Low	<b>Reduce unused JavaScript</b> <small>LCP</small>	Potential savings of 235KB
N/A	<b>Largest Contentful Paint element</b> <small>LCP</small>	1,790 ms
N/A	<b>Reduce initial server response time</b> <small>FCP</small> <small>LCP</small>	Root document took 55ms
N/A	<b>Avoid serving legacy JavaScript to modern browsers</b> <small>TBT</small>	Potential savings of 24.5KB
N/A	<b>Avoid large layout shifts</b> <small>CLS</small>	5 elements found
N/A	<b>Minimize main-thread work</b> <small>TBT</small>	Main-thread busy for 1.7s
N/A	<b>Reduce the impact of third-party code</b> <small>TBT</small>	Total size was 629KB
N/A	<b>User Timing marks and measures</b>	