



## Performance Report for: <http://www.uplead.consulting/>

Report generated: Sun, Dec 10, 2023 1:02 AM +0100 (via API)  
 Test Server Location: London, UK  
 Using: Chrome 117.0.0.0, Lighthouse 11.0.0  
 Analysis options: Adblock Plus

<b>D</b>	Performance <b>48%</b>	Structure <b>94%</b>	L. Contentful Paint <b>3.3s</b>	T. Blocking Time <b>221ms</b>	C. Layout Shift <b>0.2</b>
----------	---------------------------	-------------------------	------------------------------------	----------------------------------	-------------------------------

### Top Issues

IMPACT	AUDIT	
High	Reduce initial server response time <small>FCP LCP</small>	Root document took 2.2s
Med-Low	Avoid an excessive DOM size <small>TBT</small>	1,418 elements
Med-Low	Use a Content Delivery Network (CDN)	16 resources found
Med-Low	Avoid large layout shifts <small>CLS</small>	5 elements found
Low	Avoid chaining critical requests <small>FCP LCP</small>	3 chains found

### Page Details



Total Page Size - 1.01MB



Total Page Requests - 32



HTML
 JS
 CSS
 IMG
 Video
 Font
 Other

### How does this affect me?

Today's web user expects a fast and seamless website experience. Delivering that fast experience can result in increased visits, conversions and overall happiness.

As if you didn't need more incentive, **Google has announced that they are using page speed in their ranking algorithm.**

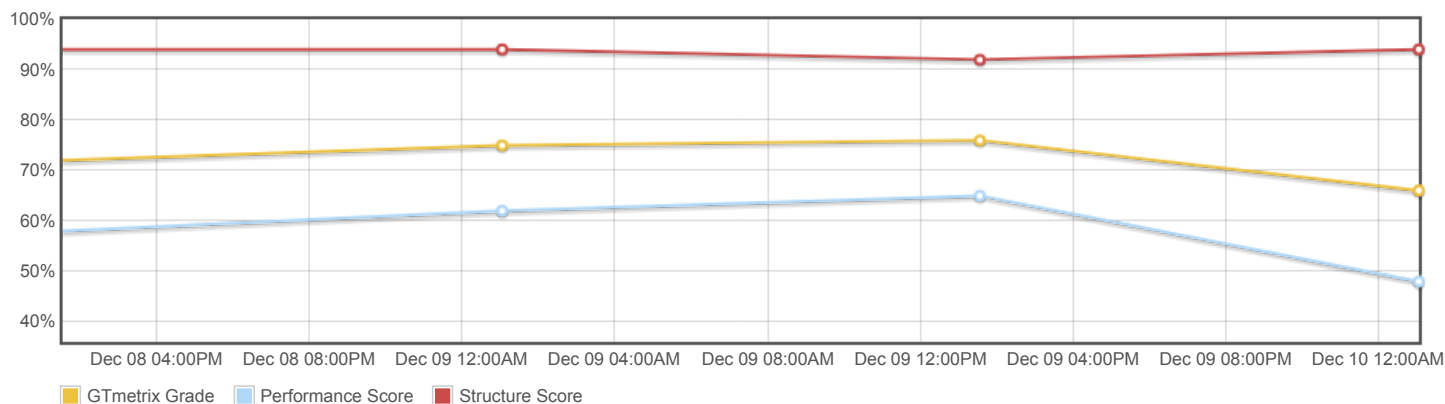
### About GTmetrix

**CARBON60**  
THE MANAGED CLOUD COMPANY

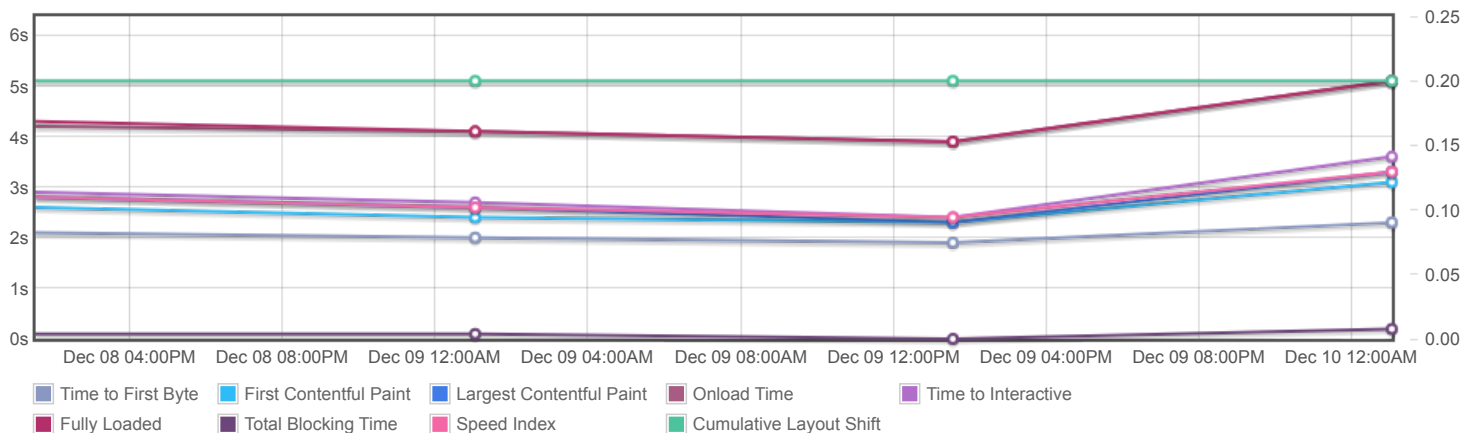
GTmetrix is developed by the good folks at **Carbon60**, a Canadian hosting company with over 27 years experience in web technology.

<https://carbon60.com/>

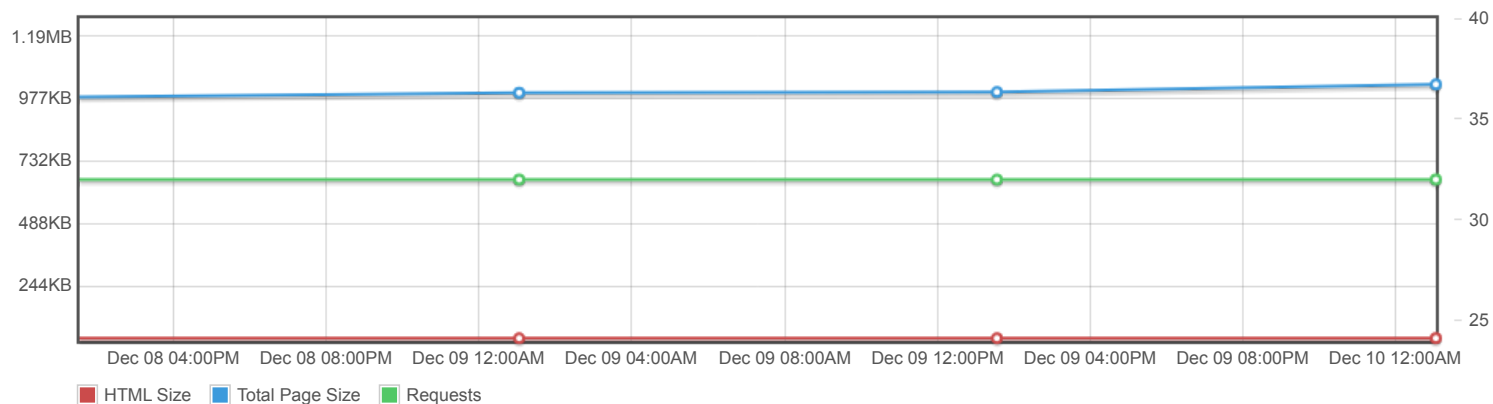
## Page scores



## Page metrics

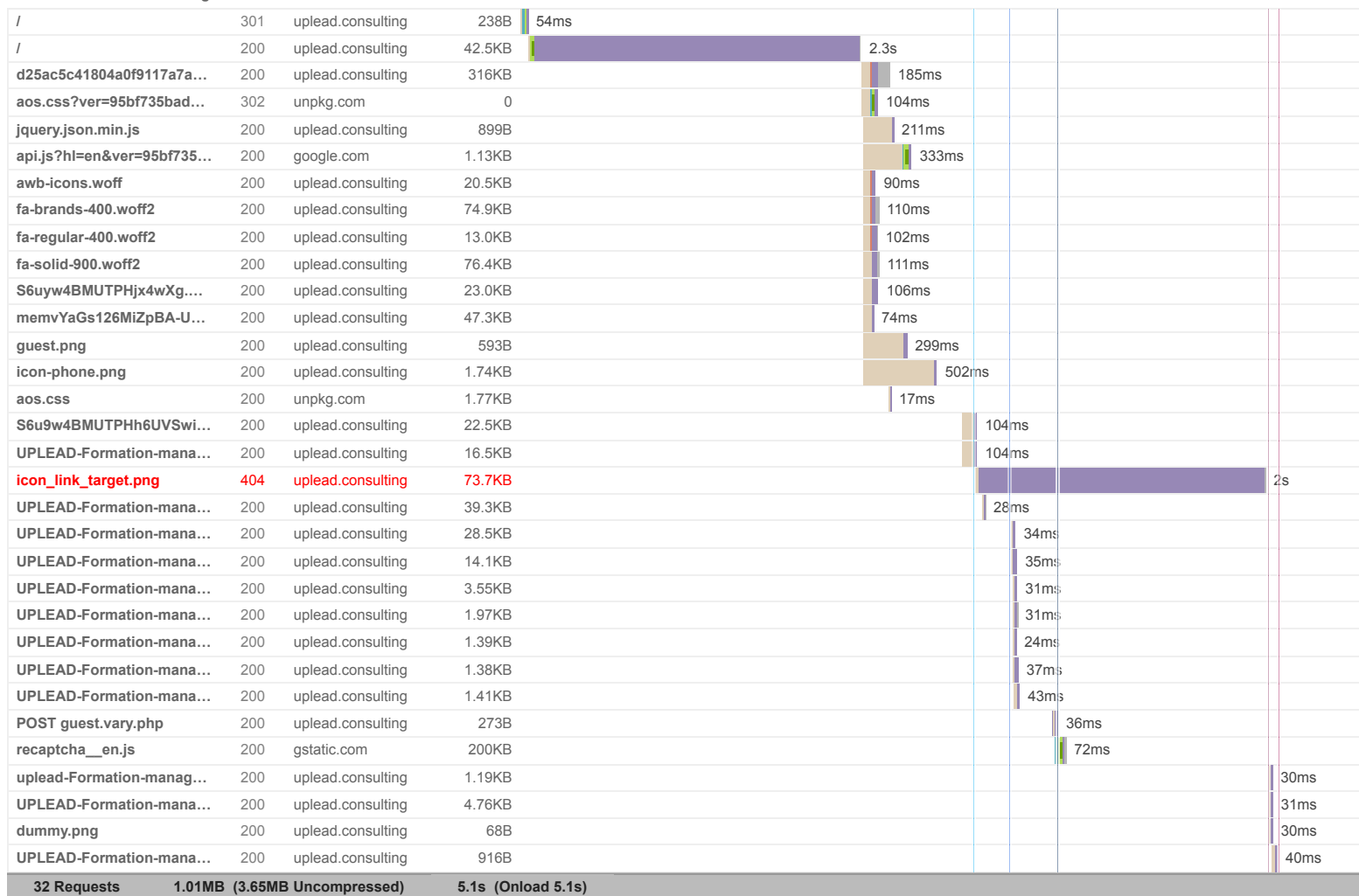


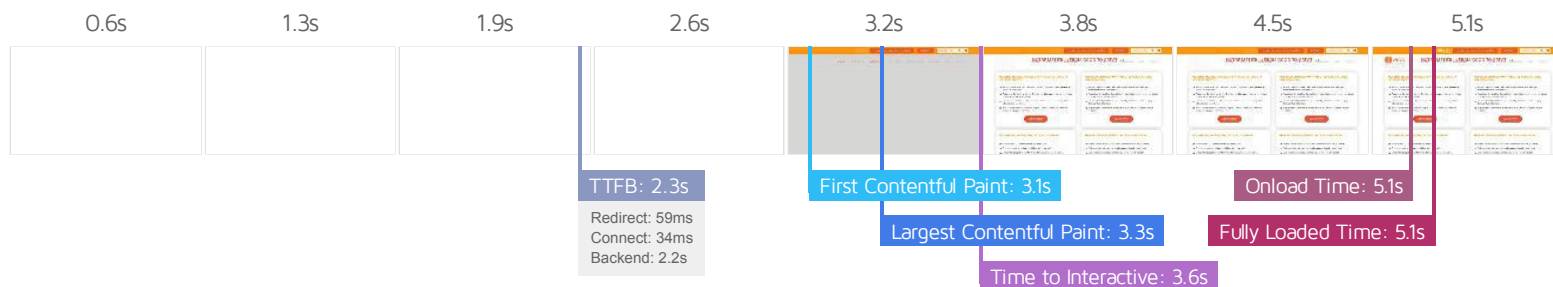
## Page sizes and request counts



The waterfall chart displays the loading behaviour of your site in your selected browser. It can be used to discover simple issues such as 404's or more complex issues such as external resources blocking page rendering.

## UPLEAD – Formation Management & Commerce Rennes





## Performance Metrics

<b>First Contentful Paint</b> How quickly content like text or images are painted onto your page. A good user experience is 0.9s or less.	Much longer than recommended <b>3.1s</b>	<b>Time to Interactive</b> How long it takes for your page to become fully interactive. A good user experience is 2.5s or less.	Longer than recommended <b>3.6s</b>
<b>Speed Index</b> How quickly the contents of your page are visibly populated. A good user experience is 1.3s or less.	Much longer than recommended <b>3.3s</b>	<b>Total Blocking Time</b> How much time is blocked by scripts during your page loading process. A good user experience is 150ms or less.	OK, but consider improvement <b>221ms</b>
<b>Largest Contentful Paint</b> How long it takes for the largest element of content (e.g. a hero image) to be painted on your page. A good user experience is 1.2s or less.	Much longer than recommended <b>3.3s</b>	<b>Cumulative Layout Shift</b> How much your page's layout shifts as it loads. A good user experience is a score of 0.1 or less.	More than recommended <b>0.2</b>

## Browser Timings

Redirect	59ms	Connect	34ms	Backend	2.2s
TTFB	2.3s	First Paint	3.1s	DOM Int.	3.6s
DOM Loaded	3.6s	Onload	5.1s	Fully Loaded	5.1s

IMPACT	AUDIT	
High	Reduce initial server response time <small>FCP LCP</small>	Root document took 2.2s
Med-Low	Avoid an excessive DOM size <small>TBT</small>	1,418 elements
Med-Low	Use a Content Delivery Network (CDN)	16 resources found
Med-Low	Avoid large layout shifts <small>CLS</small>	5 elements found
Low	Avoid chaining critical requests <small>FCP LCP</small>	3 chains found
Low	Allow back/forward cache restoration	1 failure reason
Low	Avoid long main-thread tasks <small>TBT</small>	7 long tasks found
Low	Avoid enormous network payloads <small>LCP</small>	Total size was 1.01MB
Low	Avoid multiple page redirects <small>FCP LCP</small>	Potential savings of 55ms
Low	Reduce JavaScript execution time <small>TBT</small>	216ms spent executing JavaScript
Low	Reduce unused CSS <small>FCP LCP</small>	Potential savings of 303KB
Low	Defer offscreen images	Potential savings of 85.5KB
Low	Minify JavaScript <small>FCP LCP</small>	Potential savings of 23.9KB
Low	Reduce unused JavaScript <small>LCP</small>	Potential savings of 149KB
N/A	Largest Contentful Paint element <small>LCP</small>	3,300 ms
N/A	Eliminate render-blocking resources <small>FCP LCP</small>	Potential savings of 0 ms
N/A	Avoid serving legacy JavaScript to modern browsers <small>TBT</small>	Potential savings of 16.9KB
N/A	Minimize main-thread work <small>TBT</small>	Main-thread busy for 1.4s
N/A	Reduce the impact of third-party code <small>TBT</small>	Total size was 204KB
N/A	User Timing marks and measures	