

Performance Report for: http://www.voilier-partners.fr/

Report generated: Sun, Dec 10, 2023 1:03 AM +0100 (via API)
 Test Server Location: London, UK
 Using: Chrome 117.0.0.0, Lighthouse 11.0.0
 Analysis options: Adblock Plus

	Performance 68%	Structure 79%	L. Contentful Paint 1.1s	T. Blocking Time 0ms	C. Layout Shift 1
--	---------------------------	-------------------------	------------------------------------	--------------------------------	-----------------------------

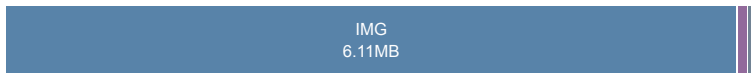
Top Issues

IMPACT	AUDIT	
High	Avoid enormous network payloads	Total size was 6.35MB
Med	Avoid large layout shifts	3 elements found
Med	Use explicit width and height on image elements	1 image found
Med	Serve static assets with an efficient cache policy	Potential savings of 604KB
Med-Low	Use a Content Delivery Network (CDN)	20 resources found

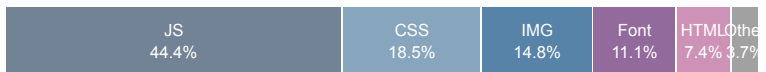
Page Details



Total Page Size - 6.35MB



Total Page Requests - 27



HTML
 JS
 CSS
 IMG
 Video
 Font
 Other

How does this affect me?

Today's web user expects a fast and seamless website experience. Delivering that fast experience can result in increased visits, conversions and overall happiness.

As if you didn't need more incentive, **Google has announced that they are using page speed in their ranking algorithm.**

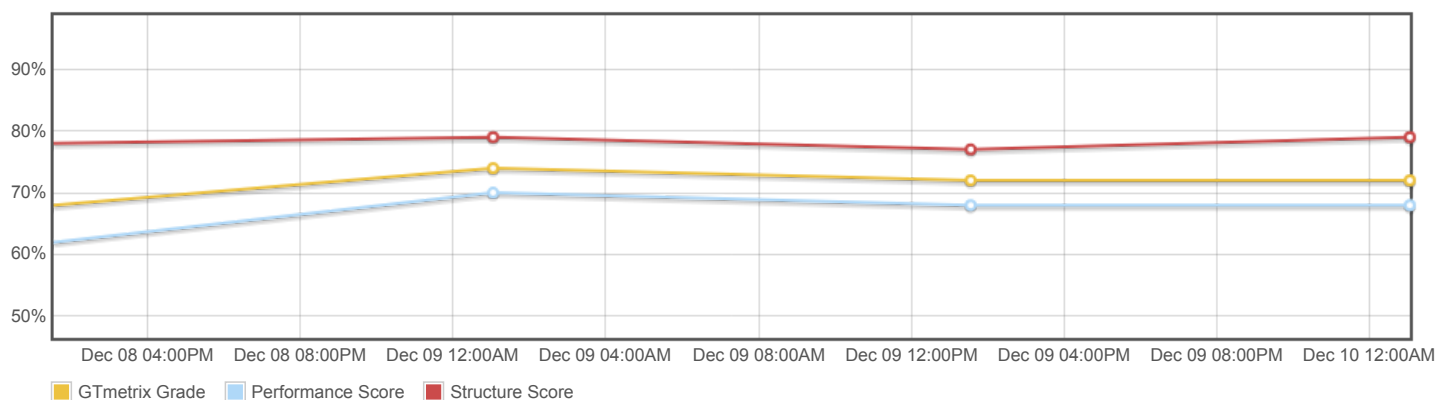
About GTmetrix

CARBON60
THE MANAGED CLOUD COMPANY

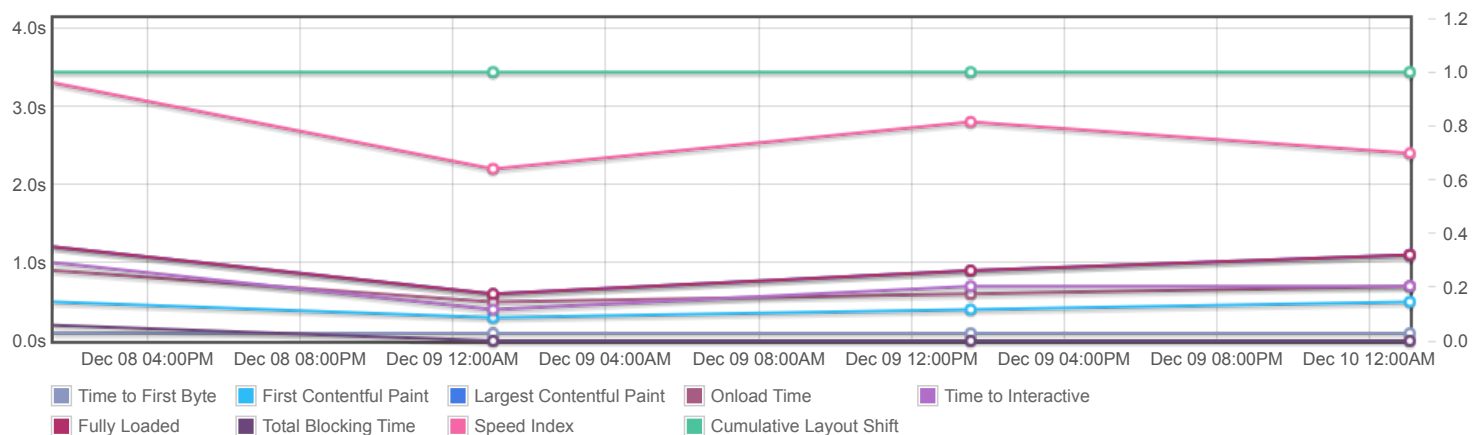
GTmetrix is developed by the good folks at **Carbon60**, a Canadian hosting company with over 27 years experience in web technology.

<https://carbon60.com/>

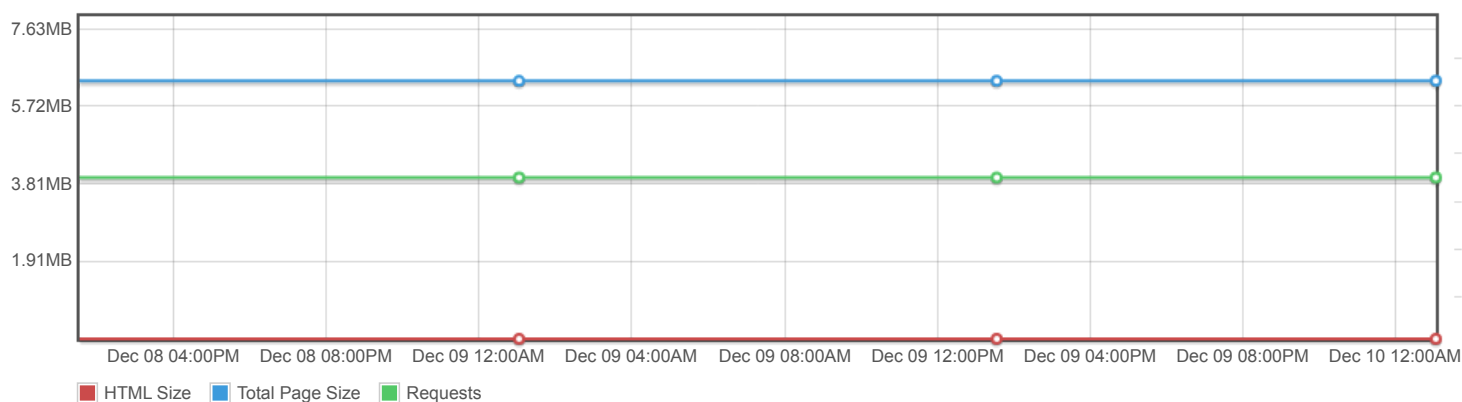
Page scores



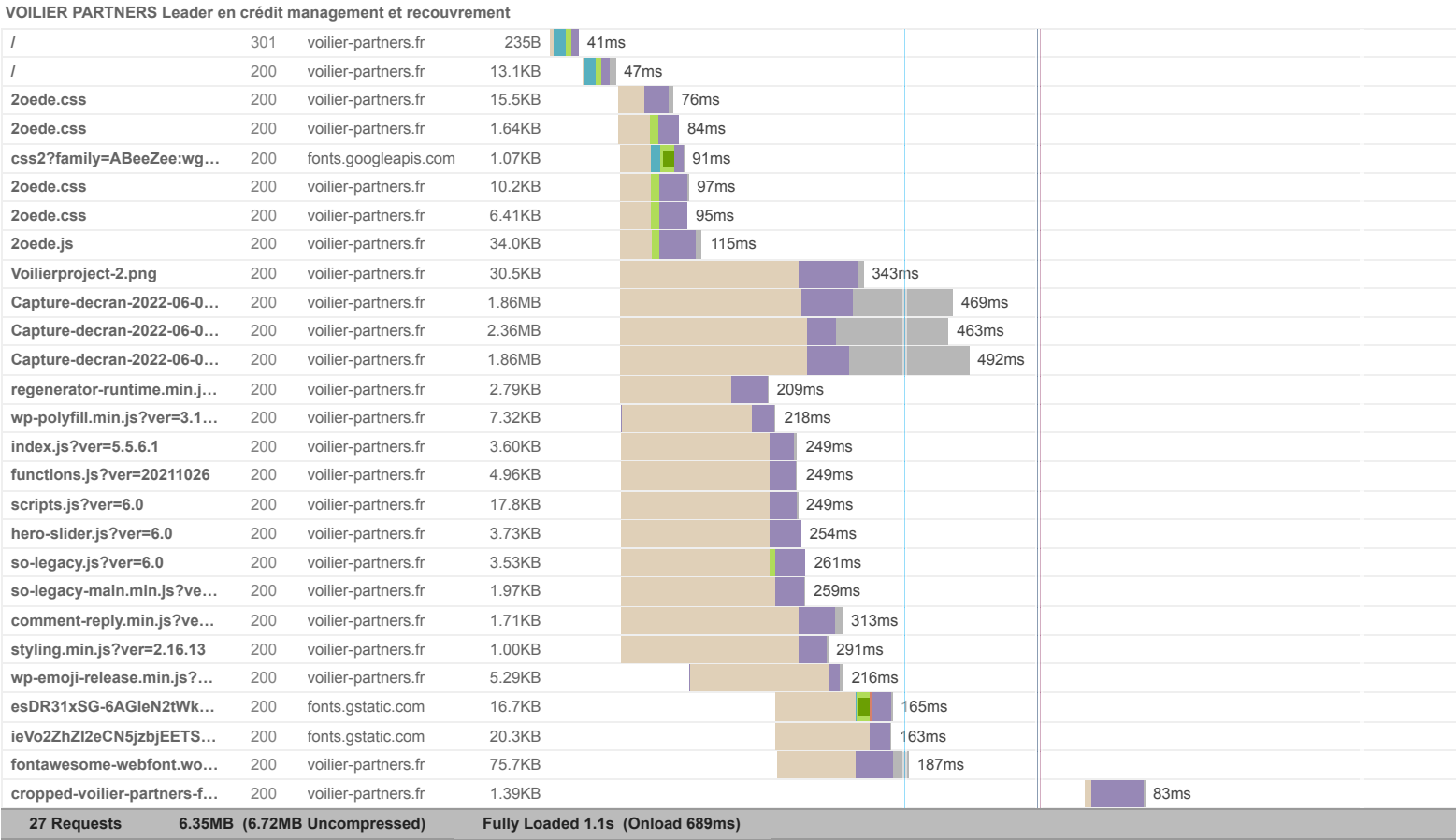
Page metrics

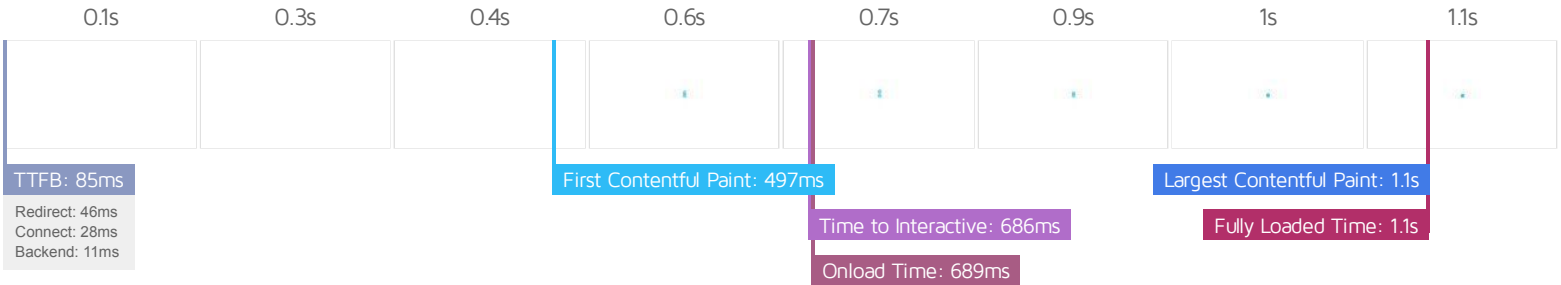


Page sizes and request counts



The waterfall chart displays the loading behaviour of your site in your selected browser. It can be used to discover simple issues such as 404's or more complex issues such as external resources blocking page rendering.





Performance Metrics

<p>First Contentful Paint</p> <p>How quickly content like text or images are painted onto your page. A good user experience is 0.9s or less.</p>	<p>Good - Nothing to do here</p> <p>497ms</p>	<p>Time to Interactive</p> <p>How long it takes for your page to become fully interactive. A good user experience is 2.5s or less.</p>	<p>Good - Nothing to do here</p> <p>685ms</p>
<p>Speed Index</p> <p>How quickly the contents of your page are visibly populated. A good user experience is 1.3s or less.</p>	<p>Much longer than recommended</p> <p>2.4s</p>	<p>Total Blocking Time</p> <p>How much time is blocked by scripts during your page loading process. A good user experience is 150ms or less.</p>	<p>Good - Nothing to do here</p> <p>0ms</p>
<p>Largest Contentful Paint</p> <p>How long it takes for the largest element of content (e.g. a hero image) to be painted on your page. A good user experience is 1.2s or less.</p>	<p>Good - Nothing to do here</p> <p>1.1s</p>	<p>Cumulative Layout Shift</p> <p>How much your page's layout shifts as it loads. A good user experience is a score of 0.1 or less.</p>	<p>Much more than recommended</p> <p>1</p>

Browser Timings

Redirect	46ms	Connect	28ms	Backend	11ms
TTFB	85ms	First Paint	497ms	DOM Int.	674ms
DOM Loaded	686ms	Onload	689ms	Fully Loaded	1.1s

IMPACT	AUDIT	
High	Avoid enormous network payloads <small>LCP</small>	Total size was 6.35MB
Med	Avoid large layout shifts <small>CLS</small>	3 elements found
Med	Use explicit width and height on image elements <small>CLS</small>	1 image found
Med	Serve static assets with an efficient cache policy	Potential savings of 604KB
Med-Low	Use a Content Delivery Network (CDN)	20 resources found
Low	Allow back/forward cache restoration	1 failure reason
Low	Serve images in next-gen formats	Potential savings of 5.72MB
Low	Ensure text remains visible during webfont load <small>FCP</small> <small>LCP</small>	1 font found
Low	Avoid an excessive DOM size <small>TBT</small>	272 elements
Low	Properly size images	Potential savings of 748KB
Low	Avoid multiple page redirects <small>FCP</small> <small>LCP</small>	Potential savings of 43ms
Low	Avoid long main-thread tasks <small>TBT</small>	2 long tasks found
Low	Reduce JavaScript execution time <small>TBT</small>	170ms spent executing JavaScript
Low	Reduce unused CSS <small>FCP</small> <small>LCP</small>	Potential savings of 15.0KB
Low	Defer offscreen images	Potential savings of 4.21MB
Low	Minify JavaScript <small>FCP</small> <small>LCP</small>	Potential savings of 12.0KB
Low	Avoid chaining critical requests <small>FCP</small> <small>LCP</small>	17 chains found
Low	Use HTTP/2 for all resources	23 requests not served via HTTP/2
N/A	Largest Contentful Paint element <small>LCP</small>	1,140 ms
N/A	Eliminate render-blocking resources <small>FCP</small> <small>LCP</small>	Potential savings of 20ms
N/A	Reduce initial server response time <small>FCP</small> <small>LCP</small>	Root document took 11ms
N/A	Avoid serving legacy JavaScript to modern browsers <small>TBT</small>	Potential savings of 8.46KB
N/A	Minimize main-thread work <small>TBT</small>	Main-thread busy for 764ms

N/A	Reduce the impact of third-party code <small>TBT</small>	Total size was 38.7KB
N/A	User Timing marks and measures	