



Performance Report for: <http://www.pharmacie-tan-menneveau.fr/>

Report generated: Sun, Dec 10, 2023 1:03 AM +0100 (via API)
 Test Server Location: London, UK
 Using: Chrome 117.0.0.0, Lighthouse 11.0.0
 Analysis options: Adblock Plus

E	Performance 30%	Structure 89%	L. Contentful Paint 3.0s	T. Blocking Time 358ms	C. Layout Shift 0.6
----------	---------------------------	-------------------------	------------------------------------	----------------------------------	-------------------------------

Top Issues

IMPACT	AUDIT	
High	Reduce initial server response time <small>FCP LCP</small>	Root document took 747ms
Med	Avoid large layout shifts <small>CLS</small>	5 elements found
Med	Use explicit width and height on image elements <small>CLS</small>	5 images found
Med	Serve static assets with an efficient cache policy	Potential savings of 1.25MB
Med-Low	Use a Content Delivery Network (CDN)	23 resources found

Page Details



Total Page Size - 2.54MB



Total Page Requests - 56



HTML
 JS
 CSS
 IMG
 Video
 Font
 Other

How does this affect me?

Today's web user expects a fast and seamless website experience. Delivering that fast experience can result in increased visits, conversions and overall happiness.

As if you didn't need more incentive, **Google has announced that they are using page speed in their ranking algorithm.**

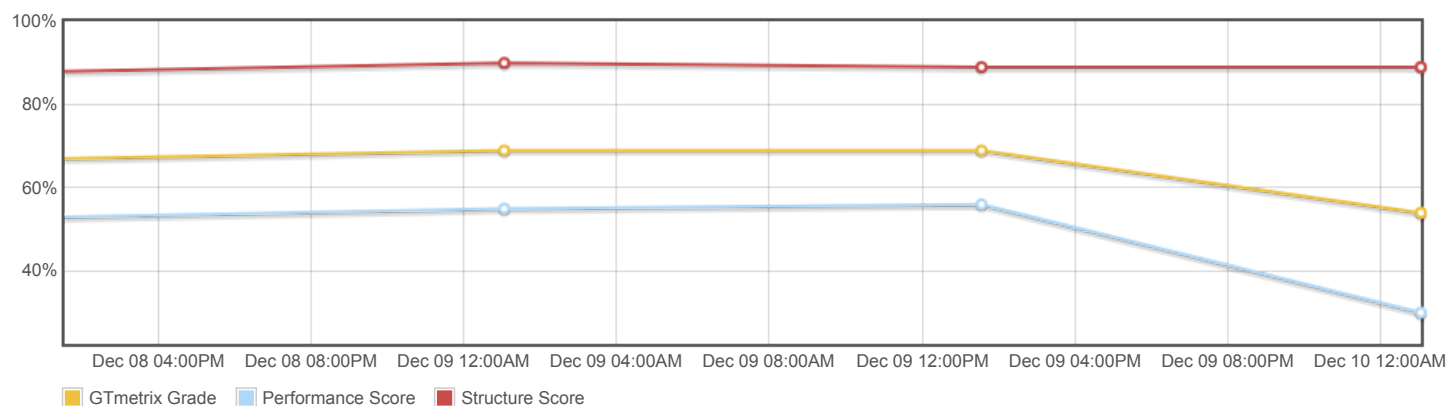
About GTmetrix

CARBON60
THE MANAGED CLOUD COMPANY

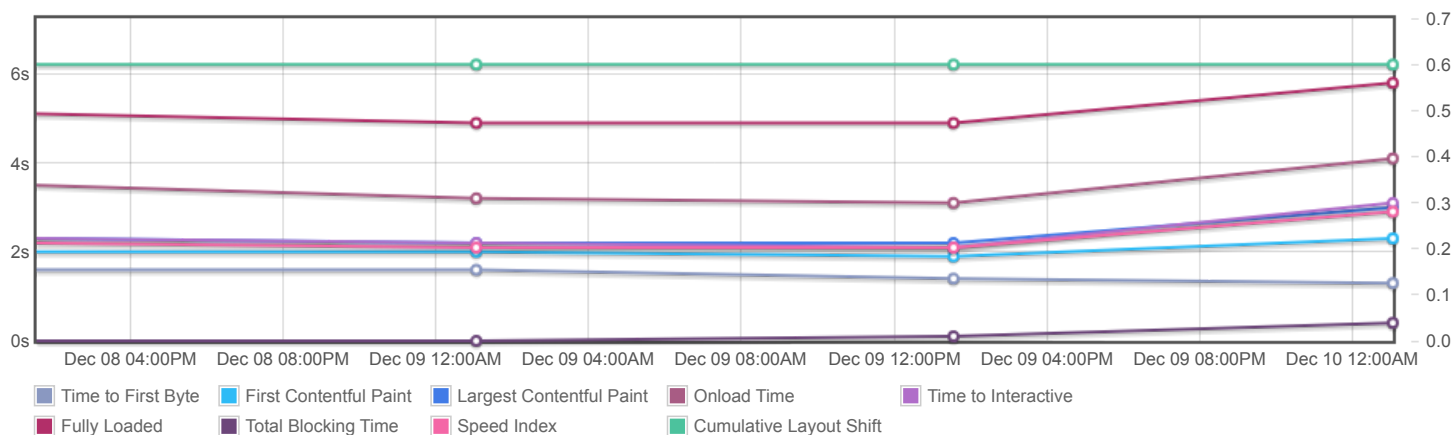
GTmetrix is developed by the good folks at **Carbon60**, a Canadian hosting company with over 27 years experience in web technology.

<https://carbon60.com/>

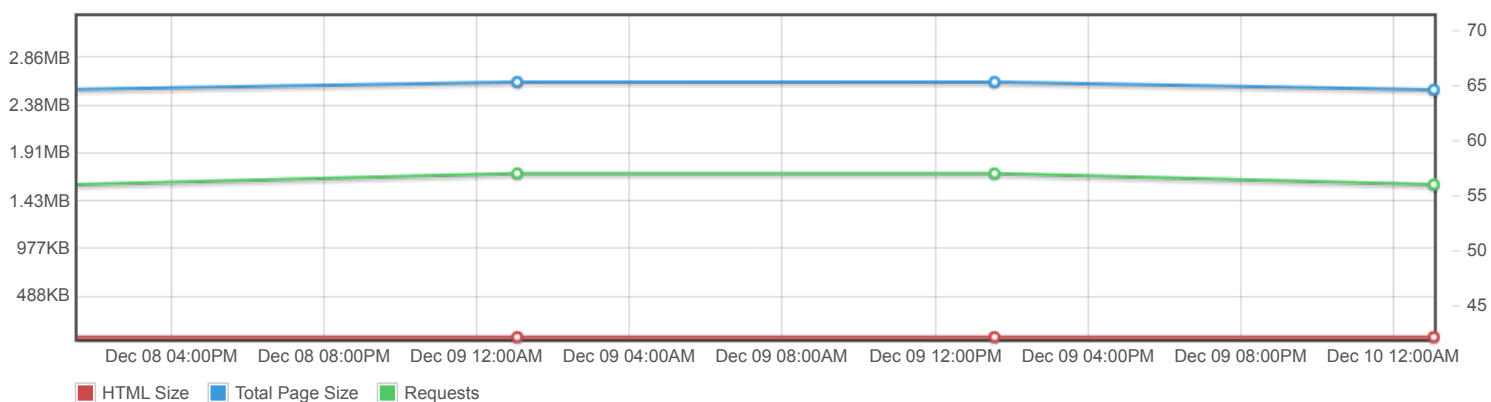
Page scores



Page metrics

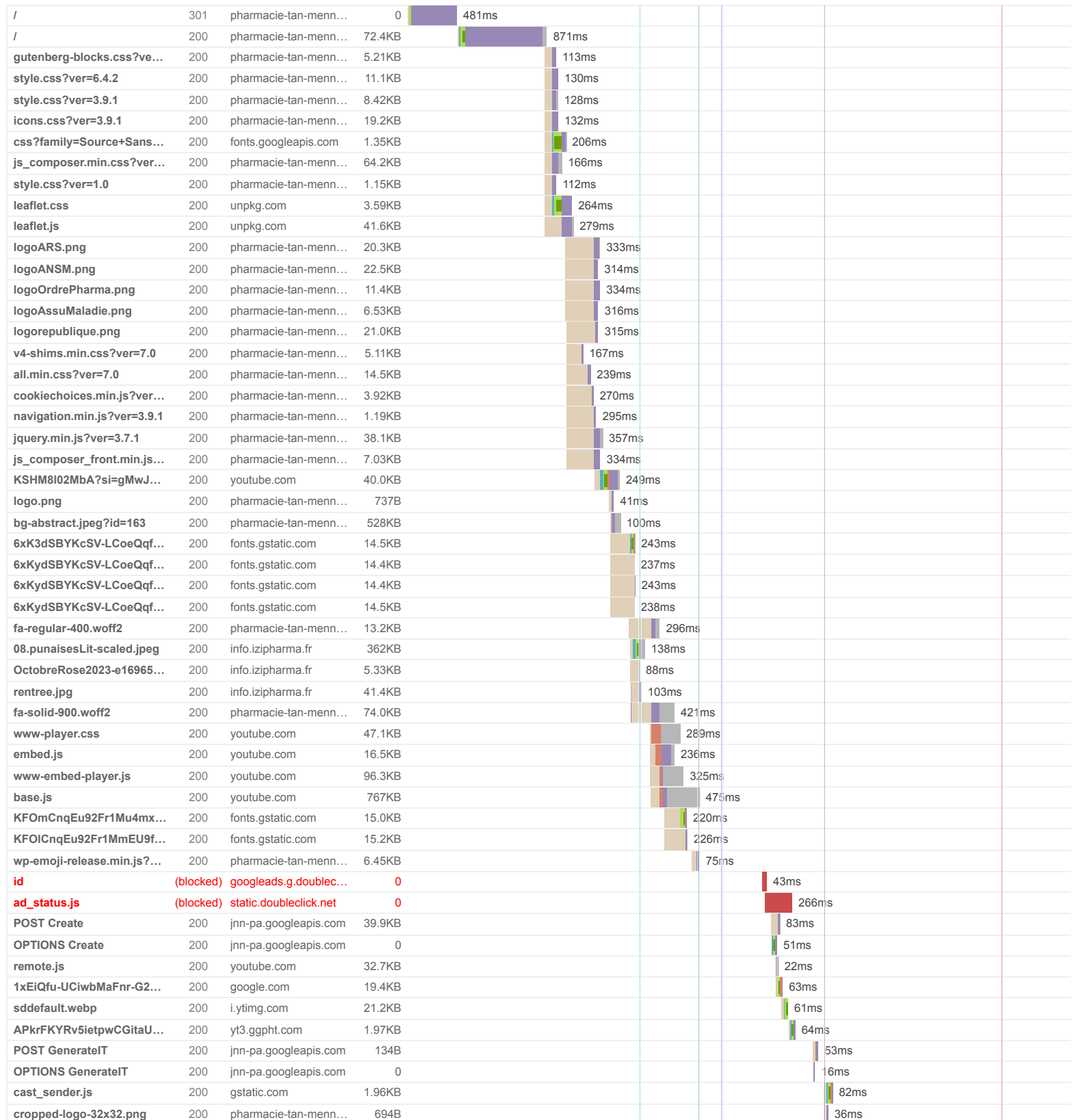


Page sizes and request counts

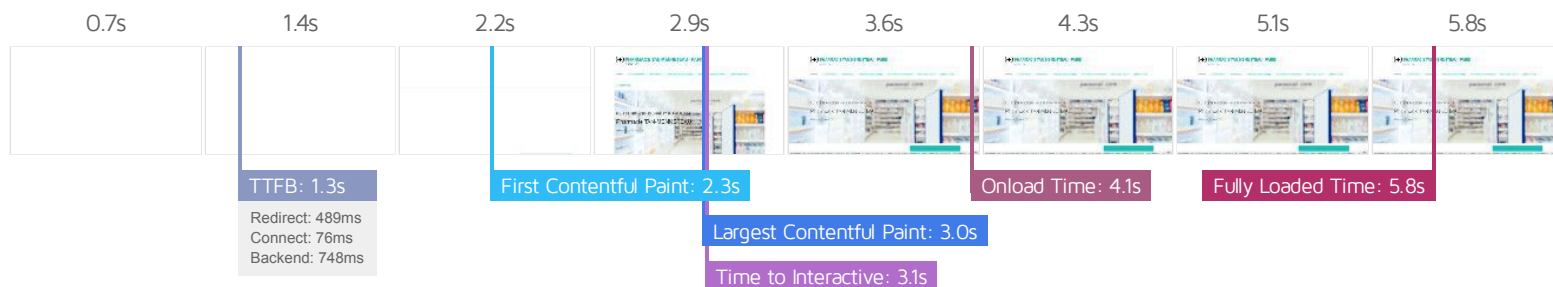


The waterfall chart displays the loading behaviour of your site in your selected browser. It can be used to discover simple issues such as 404's or more complex issues such as external resources blocking page rendering.

PHARMACIE TAN MENNETEAU – PARIS – 01 45 82 19 07



generate_204?rPC0VQ	204	youtube.com	0					22ms	
cast_sender.js	200	gstatic.com	15.0KB					14ms	
POST log_event?alt=json...	200	youtube.com	54B						43ms
56 Requests	2.54MB	(9.30MB Uncompressed)	Fully Loaded 5.8s	(Onload 4.1s)					



Performance Metrics

First Contentful Paint How quickly content like text or images are painted onto your page. A good user experience is 0.9s or less.	Much longer than recommended 2.3s	Time to Interactive How long it takes for your page to become fully interactive. A good user experience is 2.5s or less.	OK, but consider improvement 3.1s
Speed Index How quickly the contents of your page are visibly populated. A good user experience is 1.3s or less.	Much longer than recommended 2.9s	Total Blocking Time How much time is blocked by scripts during your page loading process. A good user experience is 150ms or less.	Much longer than recommended 358ms
Largest Contentful Paint How long it takes for the largest element of content (e.g. a hero image) to be painted on your page. A good user experience is 1.2s or less.	Much longer than recommended 3.0s	Cumulative Layout Shift How much your page's layout shifts as it loads. A good user experience is a score of 0.1 or less.	Much more than recommended 0.6

Browser Timings

Redirect	489ms	Connect	76ms	Backend	748ms
TTFB	1.3s	First Paint	2.3s	DOM Int.	2.8s
DOM Loaded	2.8s	Onload	4.1s	Fully Loaded	5.8s

IMPACT	AUDIT	
High	Reduce initial server response time <small>FCP LCP</small>	Root document took 747ms
Med	Avoid large layout shifts <small>CLS</small>	5 elements found
Med	Use explicit width and height on image elements <small>CLS</small>	5 images found
Med	Serve static assets with an efficient cache policy	Potential savings of 1.25MB
Med-Low	Use a Content Delivery Network (CDN)	23 resources found
Med-Low	Lazy load third-party resources with facades <small>TBT</small>	1 facade alternative available
Low	Avoid long main-thread tasks <small>TBT</small>	7 long tasks found
Low	Avoid enormous network payloads <small>LCP</small>	Total size was 2.55MB
Low	Avoid chaining critical requests <small>FCP LCP</small>	19 chains found
Low	Ensure text remains visible during webfont load <small>FCP LCP</small>	6 fonts found
Low	Avoid an excessive DOM size <small>TBT</small>	299 elements
Low	Properly size images	Potential savings of 31.5KB
Low	Avoid multiple page redirects <small>FCP LCP</small>	Potential savings of 486ms
Low	Efficiently encode images	Potential savings of 415KB
Low	Reduce JavaScript execution time <small>TBT</small>	393ms spent executing JavaScript
Low	Reduce unused CSS <small>FCP LCP</small>	Potential savings of 97.2KB
Low	Serve images in next-gen formats	Potential savings of 739KB
Low	Defer offscreen images	Potential savings of 77.3KB
Low	Minify JavaScript <small>FCP LCP</small>	Potential savings of 12.0KB
Low	Reduce unused JavaScript <small>LCP</small>	Potential savings of 55.2KB
N/A	Largest Contentful Paint element <small>LCP</small>	3,050 ms
N/A	Eliminate render-blocking resources <small>FCP LCP</small>	Potential savings of 15ms
N/A	Avoid serving legacy JavaScript to modern browsers <small>TBT</small>	Potential savings of 8.46KB

N/A	Minimize main-thread work TBT	Main-thread busy for 1.8s
N/A	Reduce the impact of third-party code TBT	Total size was 1.61MB
N/A	User Timing marks and measures	