



Performance Report for: <http://www.isofage.fr/>

Report generated: Sun, Dec 10, 2023 1:03 AM +0100 (via API)
 Test Server Location: London, UK
 Using: Chrome 117.0.0.0, Lighthouse 11.0.0
 Analysis options: Adblock Plus

D	Performance 58%	Structure 82%	L. Contentful Paint 5.4s	T. Blocking Time 107ms	C. Layout Shift 0.14
----------	---------------------------	-------------------------	------------------------------------	----------------------------------	--------------------------------

Top Issues

IMPACT	AUDIT	
High	Avoid enormous network payloads <small>LCP</small>	Total size was 5.19MB
Med-Low	Use a Content Delivery Network (CDN)	21 resources found
Med-Low	Avoid multiple page redirects <small>FCP LCP</small>	Potential savings of 722ms
Low	Avoid large layout shifts <small>CLS</small>	1 element found
Low	Allow back/forward cache restoration	1 failure reason

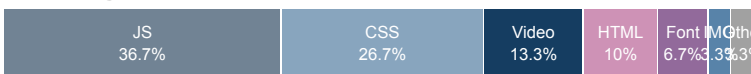
Page Details



Total Page Size - 2.73MB



Total Page Requests - 30



HTML JS CSS IMG Video Font Other

How does this affect me?

Today's web user expects a fast and seamless website experience. Delivering that fast experience can result in increased visits, conversions and overall happiness.

As if you didn't need more incentive, **Google has announced that they are using page speed in their ranking algorithm.**

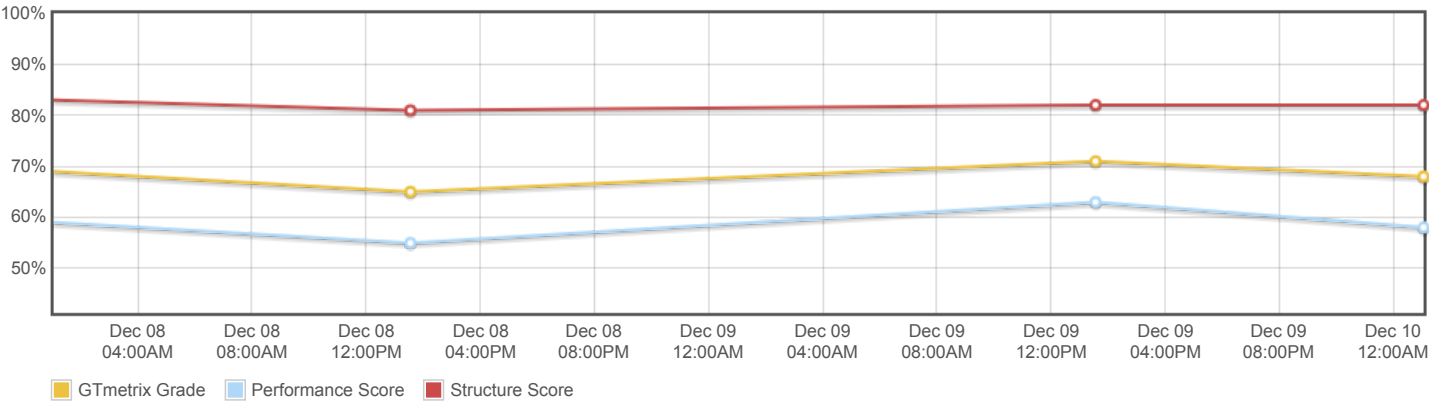
About GTmetrix

CARBON60
THE MANAGED CLOUD COMPANY

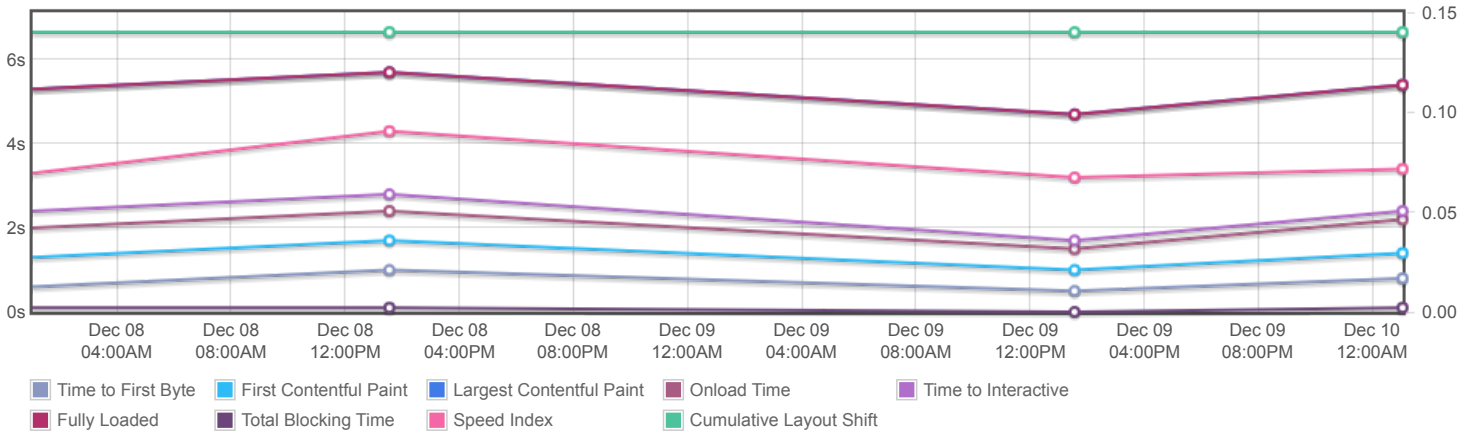
GTmetrix is developed by the good folks at **Carbon60**, a Canadian hosting company with over 27 years experience in web technology.

<https://carbon60.com/>

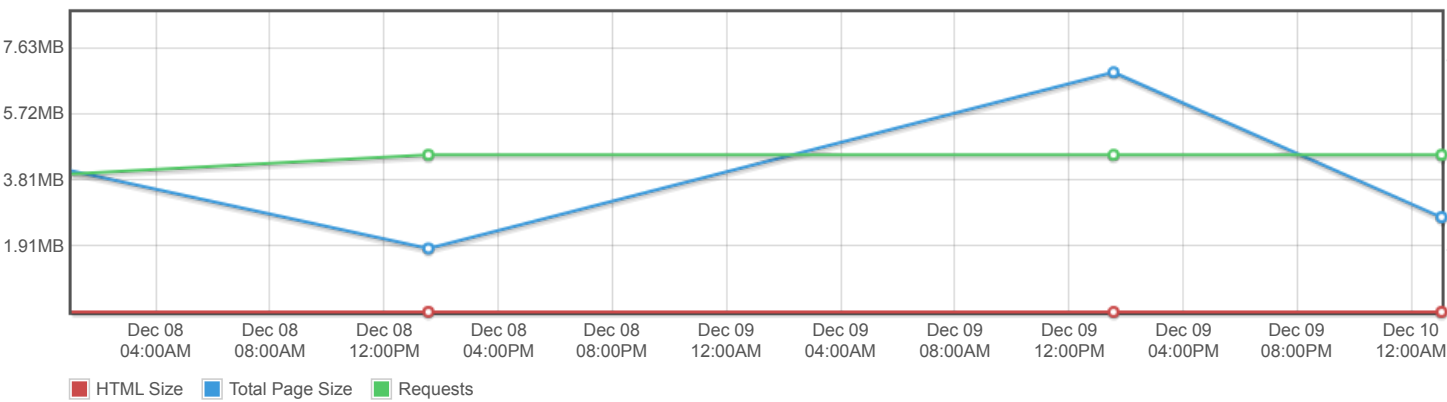
Page scores



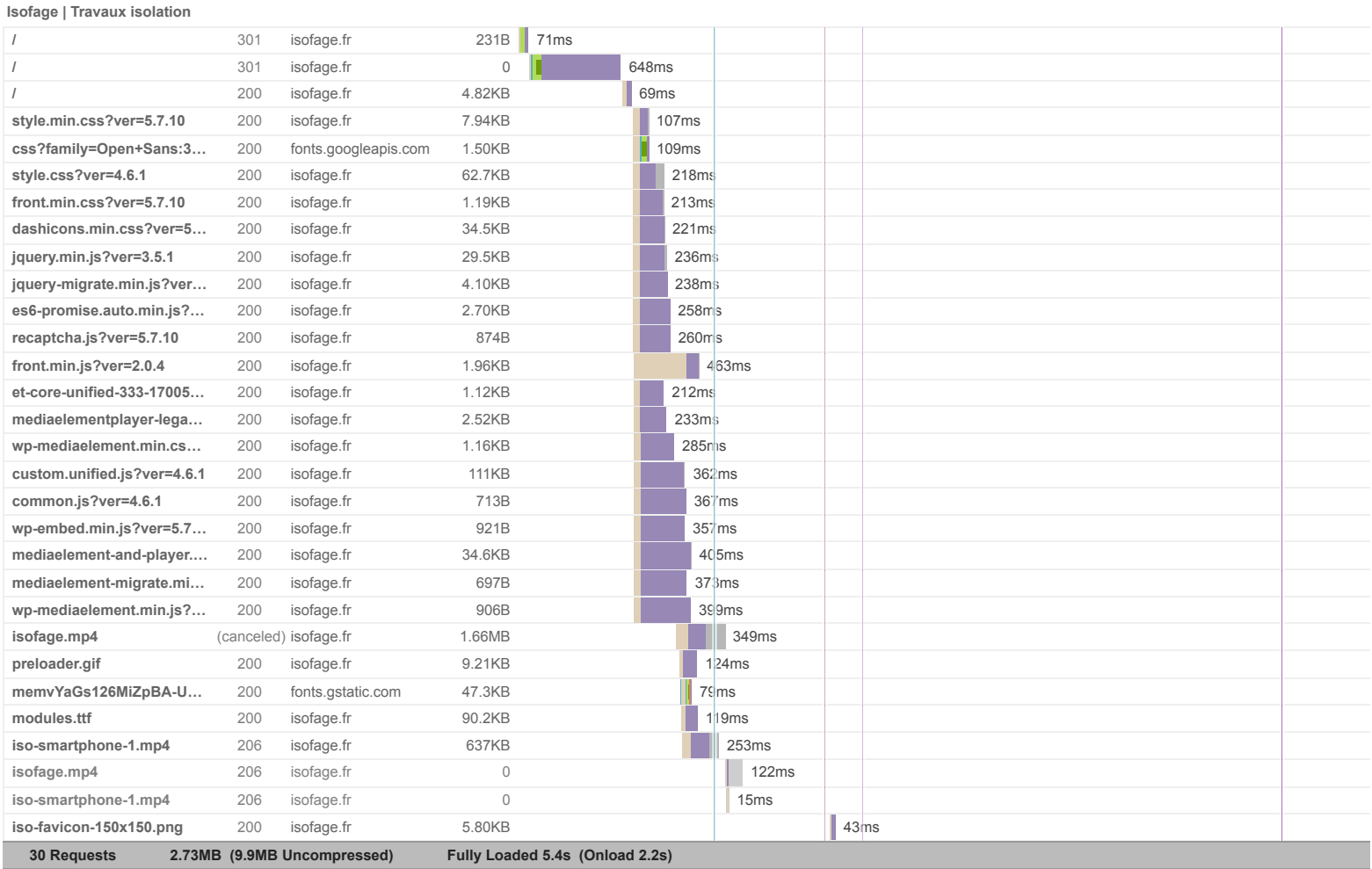
Page metrics

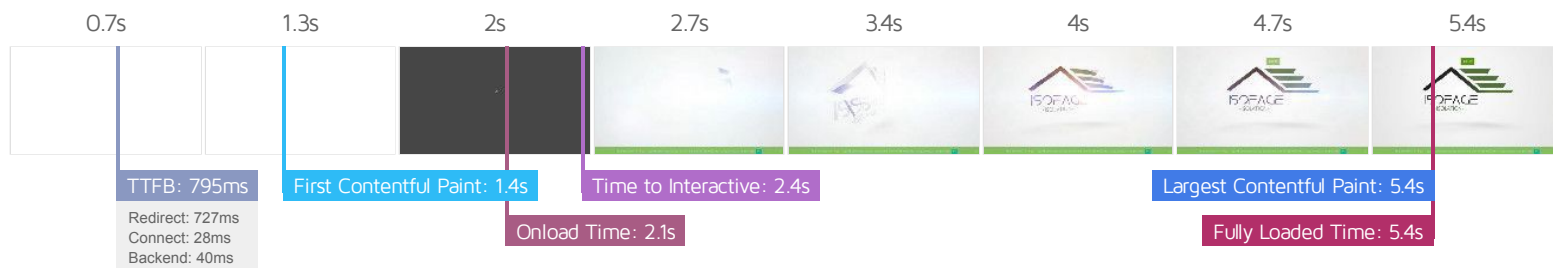


Page sizes and request counts



The waterfall chart displays the loading behaviour of your site in your selected browser. It can be used to discover simple issues such as 404's or more complex issues such as external resources blocking page rendering.





Performance Metrics

First Contentful Paint

How quickly content like text or images are painted onto your page. A good user experience is 0.9s or less.

Longer than recommended

1.4s

Time to Interactive

How long it takes for your page to become fully interactive. A good user experience is 2.5s or less.

Good - Nothing to do here

2.4s

Speed Index

How quickly the contents of your page are visibly populated. A good user experience is 1.3s or less.

Much longer than recommended

3.4s

Total Blocking Time

How much time is blocked by scripts during your page loading process. A good user experience is 150ms or less.

Good - Nothing to do here

107ms

Largest Contentful Paint

How long it takes for the largest element of content (e.g. a hero image) to be painted on your page. A good user experience is 1.2s or less.

Much longer than recommended

5.4s

Cumulative Layout Shift

How much your page's layout shifts as it loads. A good user experience is a score of 0.1 or less.

OK, but consider improvement

0.14

Browser Timings

Redirect

727ms

Connect

28ms

Backend

40ms

TTFB

795ms

DOM Int.

1.4s

DOM Loaded

1.4s

First Paint

1.4s

Onload

2.1s

Fully Loaded

5.4s

IMPACT	AUDIT	
High	Avoid enormous network payloads <small>LCP</small>	Total size was 5.19MB
Med-Low	Use a Content Delivery Network (CDN)	21 resources found
Med-Low	Avoid multiple page redirects <small>FCP LCP</small>	Potential savings of 722ms
Low	Avoid large layout shifts <small>CLS</small>	1 element found
Low	Allow back/forward cache restoration	1 failure reason
Low	Avoid long main-thread tasks <small>TBT</small>	4 long tasks found
Low	Eliminate render-blocking resources <small>FCP LCP</small>	Potential savings of 24ms
Low	Reduce JavaScript execution time <small>TBT</small>	368ms spent executing JavaScript
Low	Reduce unused CSS <small>FCP LCP</small>	Potential savings of 96.6KB
Low	Avoid non-composited animations <small>CLS</small>	2 animated elements found
Low	Minify JavaScript <small>FCP LCP</small>	Potential savings of 12.0KB
Low	Avoid chaining critical requests <small>FCP LCP</small>	18 chains found
Low	Reduce unused JavaScript <small>LCP</small>	Potential savings of 65.2KB
N/A	Avoid an excessive DOM size <small>TBT</small>	123 elements
N/A	Largest Contentful Paint element <small>LCP</small>	5,360 ms
N/A	Reduce initial server response time <small>FCP LCP</small>	Root document took 39ms
N/A	Avoid serving legacy JavaScript to modern browsers <small>TBT</small>	Potential savings of 14.5KB
N/A	Minimize main-thread work <small>TBT</small>	Main-thread busy for 1.1s
N/A	Reduce the impact of third-party code <small>TBT</small>	Total size was 49.3KB
N/A	User Timing marks and measures	