

Performance Report for: <http://www.restaurant-aroma.fr/>

Report generated: Sun, Dec 10, 2023 1:03 AM +0100 (via API)
 Test Server Location: London, UK
 Using: Chrome 117.0.0.0, Lighthouse 11.0.0
 Analysis options: Adblock Plus

B	Performance 78%	Structure 92%	L. Contentful Paint 2.2s	T. Blocking Time 65ms	C. Layout Shift 0
----------	---------------------------	-------------------------	------------------------------------	---------------------------------	-----------------------------

Top Issues

IMPACT	AUDIT	
Med	Serve static assets with an efficient cache policy	Potential savings of 975KB
Med-Low	Use a Content Delivery Network (CDN)	31 resources found
Low	Use passive listeners to improve scrolling performance	1 event listener not passive
Low	Preload Largest Contentful Paint image <small>LCP</small>	111ms
Low	Avoid long main-thread tasks <small>TBT</small>	8 long tasks found

Page Details



Total Page Size - 1.13MB



Total Page Requests - 36



HTML JS CSS IMG Video Font Other

How does this affect me?

Today's web user expects a fast and seamless website experience. Delivering that fast experience can result in increased visits, conversions and overall happiness.

As if you didn't need more incentive, **Google has announced that they are using page speed in their ranking algorithm.**

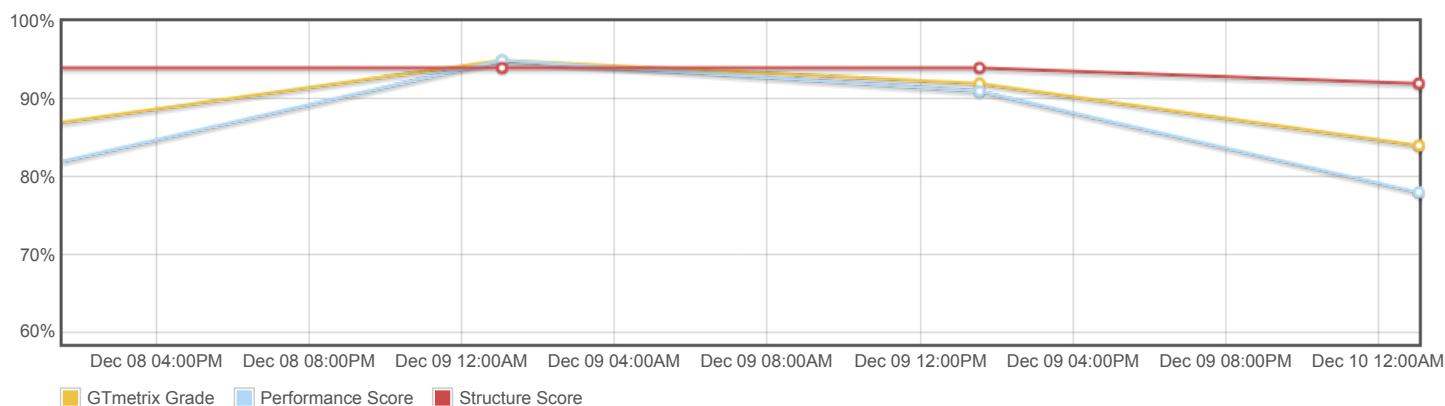
About GTmetrix

CARBON60
THE MANAGED CLOUD COMPANY

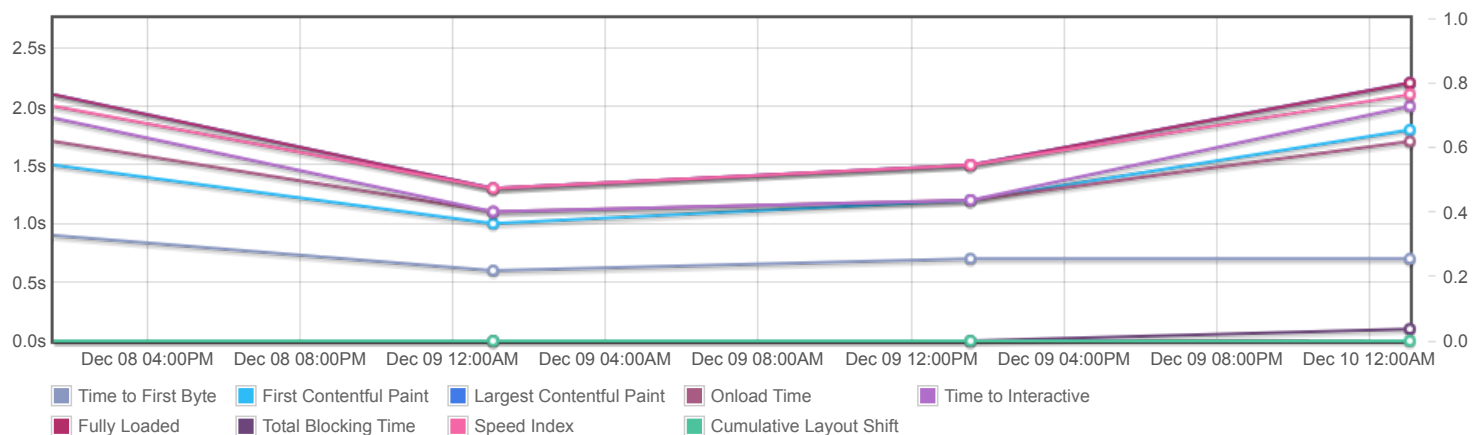
GTmetrix is developed by the good folks at **Carbon60**, a Canadian hosting company with over 27 years experience in web technology.

<https://carbon60.com/>

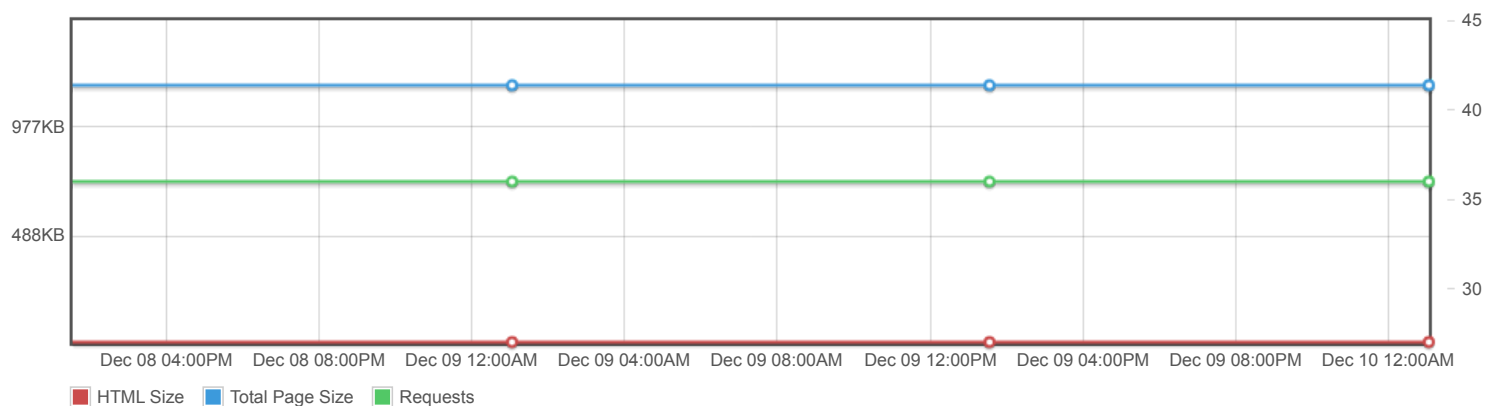
Page scores



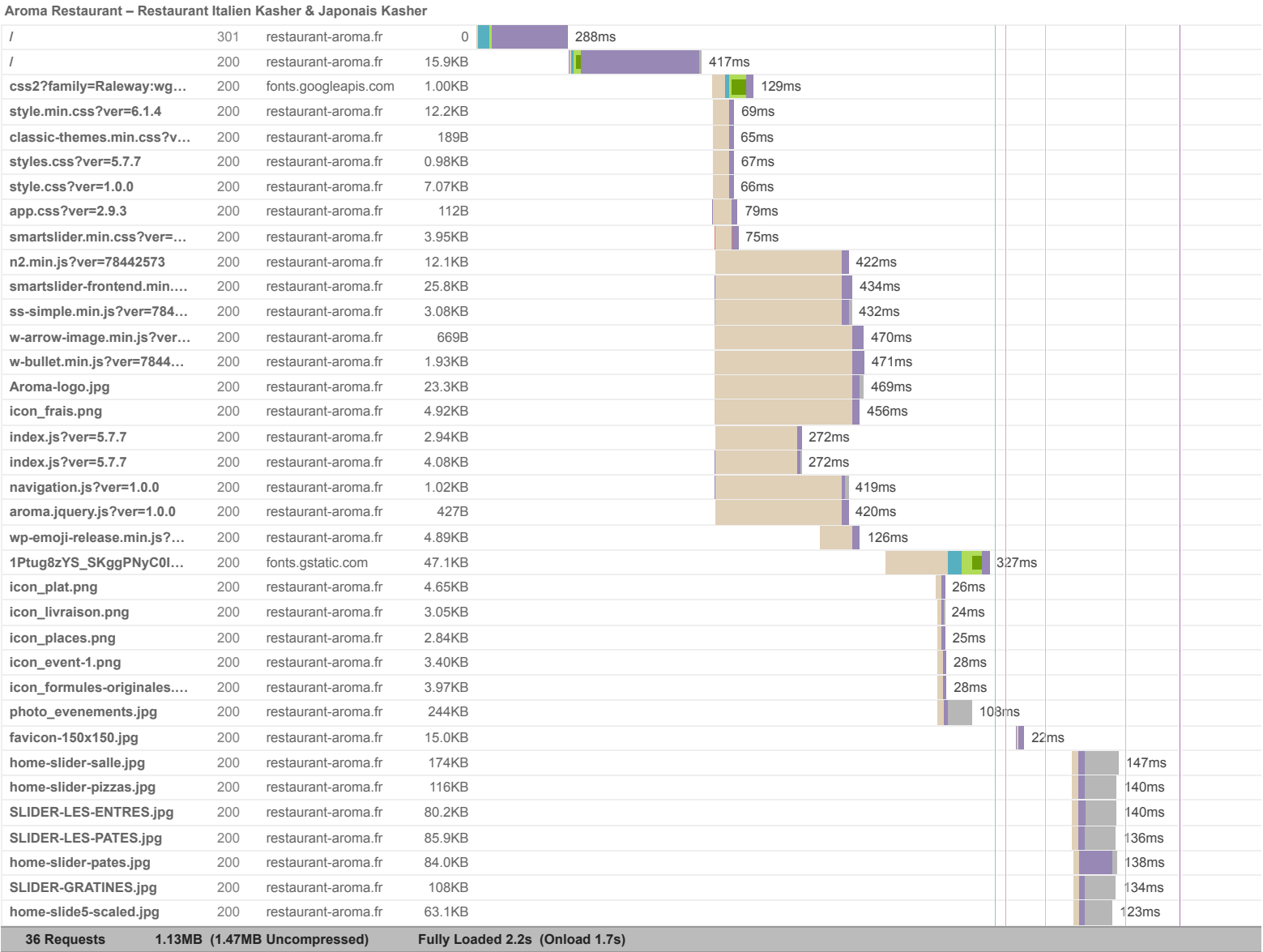
Page metrics



Page sizes and request counts



The waterfall chart displays the loading behaviour of your site in your selected browser. It can be used to discover simple issues such as 404's or more complex issues such as external resources blocking page rendering.





Performance Metrics

First Contentful Paint How quickly content like text or images are painted onto your page. A good user experience is 0.9s or less.	Much longer than recommended 1.8s	Time to Interactive How long it takes for your page to become fully interactive. A good user experience is 2.5s or less.	Good - Nothing to do here 2.0s
Speed Index How quickly the contents of your page are visibly populated. A good user experience is 1.3s or less.	Longer than recommended 2.1s	Total Blocking Time How much time is blocked by scripts during your page loading process. A good user experience is 150ms or less.	Good - Nothing to do here 65ms
Largest Contentful Paint How long it takes for the largest element of content (e.g. a hero image) to be painted on your page. A good user experience is 1.2s or less.	Longer than recommended 2.2s	Cumulative Layout Shift How much your page's layout shifts as it loads. A good user experience is a score of 0.1 or less.	Good - Nothing to do here 0

Browser Timings

Redirect	292ms	Connect	34ms	Backend	373ms
TTFB	699ms	DOM Int.	1.6s	DOM Loaded	1.6s
Onload	1.7s	First Paint	1.8s	Fully Loaded	2.2s

IMPACT	AUDIT	
Med	Serve static assets with an efficient cache policy	Potential savings of 975KB
Med-Low	Use a Content Delivery Network (CDN)	31 resources found
Low	Use passive listeners to improve scrolling performance	1 event listener not passive
Low	Preload Largest Contentful Paint image LCP	111ms
Low	Avoid long main-thread tasks TBT	8 long tasks found
Low	Avoid chaining critical requests FCP LCP	11 chains found
Low	Avoid an excessive DOM size TBT	436 elements
Low	Avoid enormous network payloads LCP	Total size was 1.14MB
Low	Properly size images	Potential savings of 270KB
Low	Avoid multiple page redirects FCP LCP	Potential savings of 289ms
Low	Efficiently encode images	Potential savings of 178KB
Low	Reduce JavaScript execution time TBT	341ms spent executing JavaScript
Low	Reduce unused CSS FCP LCP	Potential savings of 12.3KB
Low	Serve images in next-gen formats	Potential savings of 459KB
Low	Reduce initial server response time FCP LCP	Root document took 373ms
Low	Minify CSS FCP LCP	Potential savings of 2.66KB
Low	Minify JavaScript FCP LCP	Potential savings of 12.0KB
N/A	Largest Contentful Paint element LCP	2,210 ms
N/A	Eliminate render-blocking resources FCP LCP	Potential savings of 0 ms
N/A	Avoid serving legacy JavaScript to modern browsers TBT	Potential savings of 8.51KB
N/A	Avoid large layout shifts CLS	5 elements found
N/A	Minimize main-thread work TBT	Main-thread busy for 1.4s
N/A	Reduce the impact of third-party code TBT	Total size was 48.6KB

