



Performance Report for: <http://www.ragazzi-group.fr/>

Report generated: Sun, Dec 10, 2023 1:03 AM +0100 (via API)
 Test Server Location: London, UK
 Using: Chrome 117.0.0.0, Lighthouse 11.0.0
 Analysis options: Adblock Plus

A	Performance 97%	Structure 93%	L. Contentful Paint 1.2s	T. Blocking Time 0ms	C. Layout Shift 0
----------	---------------------------	-------------------------	------------------------------------	--------------------------------	-----------------------------

Top Issues

IMPACT	AUDIT	
Med	Serve static assets with an efficient cache policy	Potential savings of 1.85MB
Med-Low	Use a Content Delivery Network (CDN)	26 resources found
Low	Avoid multiple page redirects <small>FCP LCP</small>	Potential savings of 185ms
Low	Avoid enormous network payloads <small>LCP</small>	Total size was 1.88MB
Low	Eliminate render-blocking resources <small>FCP LCP</small>	Potential savings of 24ms

Page Details



Total Page Size - 1.87MB



Total Page Requests - 37



HTML
JS
CSS
IMG
Video
Font
Other

How does this affect me?

Today's web user expects a fast and seamless website experience. Delivering that fast experience can result in increased visits, conversions and overall happiness.

As if you didn't need more incentive, **Google has announced that they are using page speed in their ranking algorithm.**

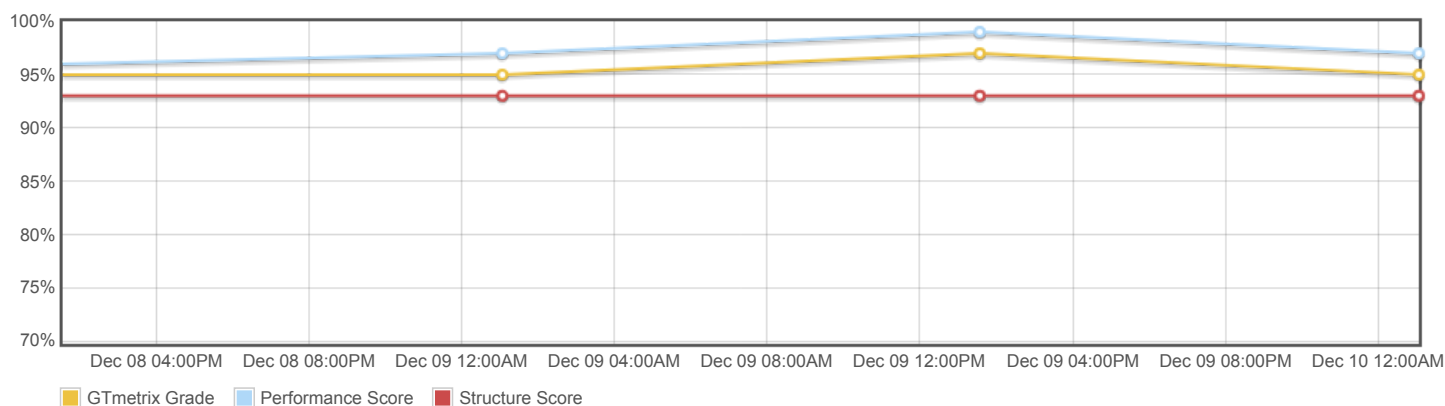
About GTmetrix

CARBON60
THE MANAGED CLOUD COMPANY

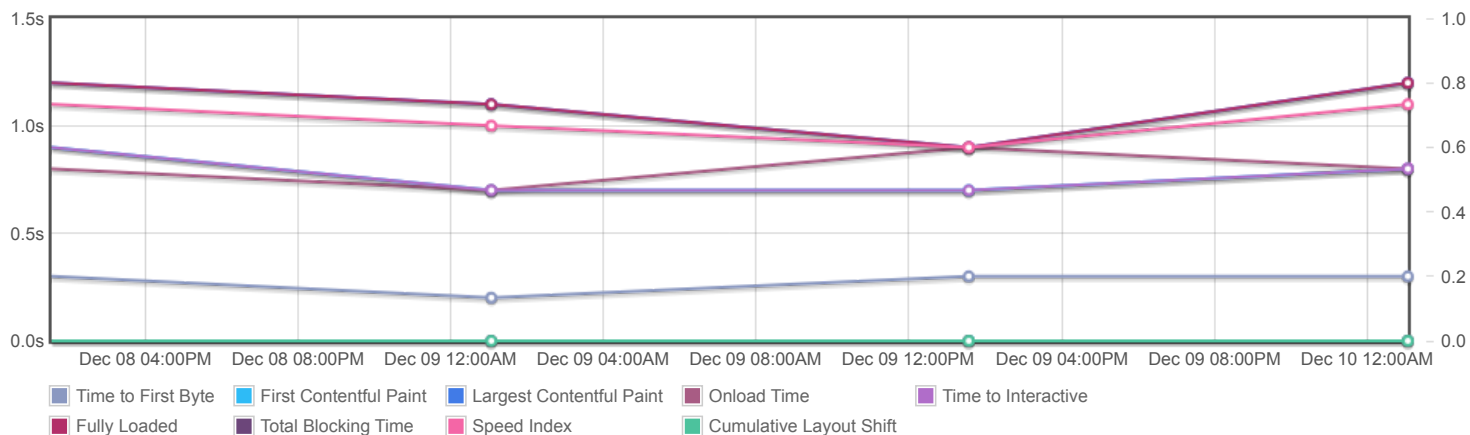
GTmetrix is developed by the good folks at **Carbon60**, a Canadian hosting company with over 27 years experience in web technology.

<https://carbon60.com/>

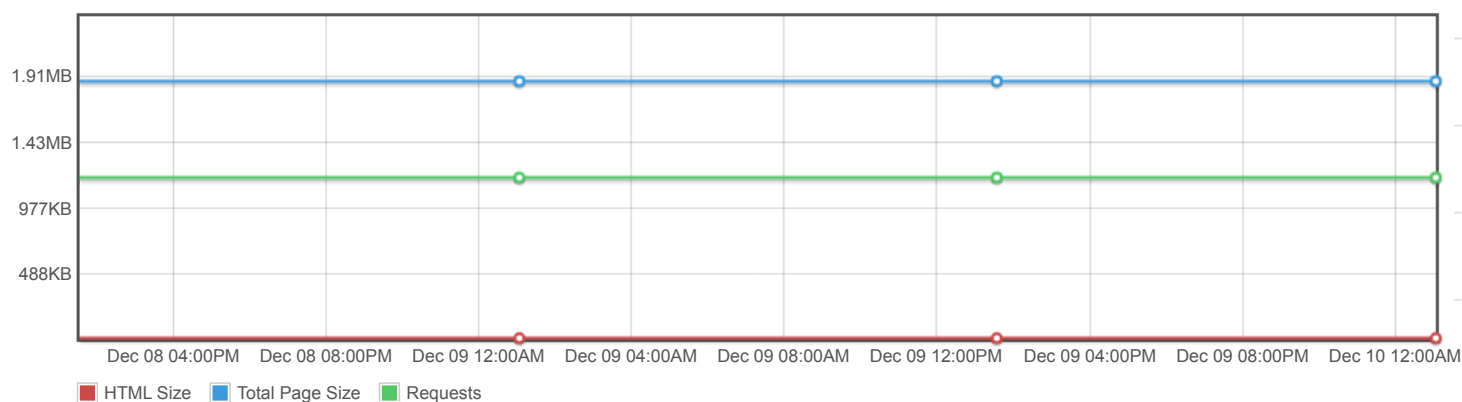
Page scores



Page metrics

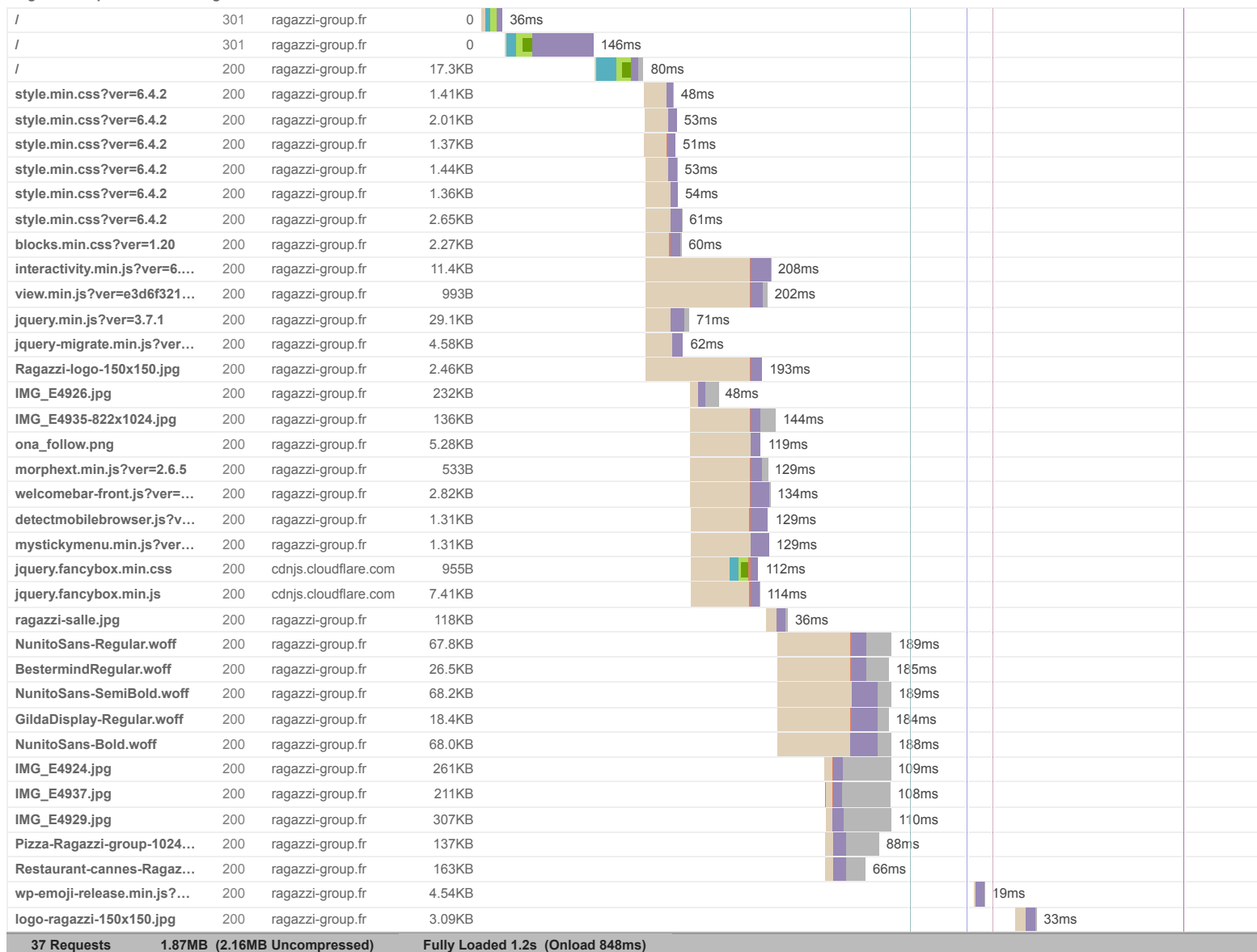


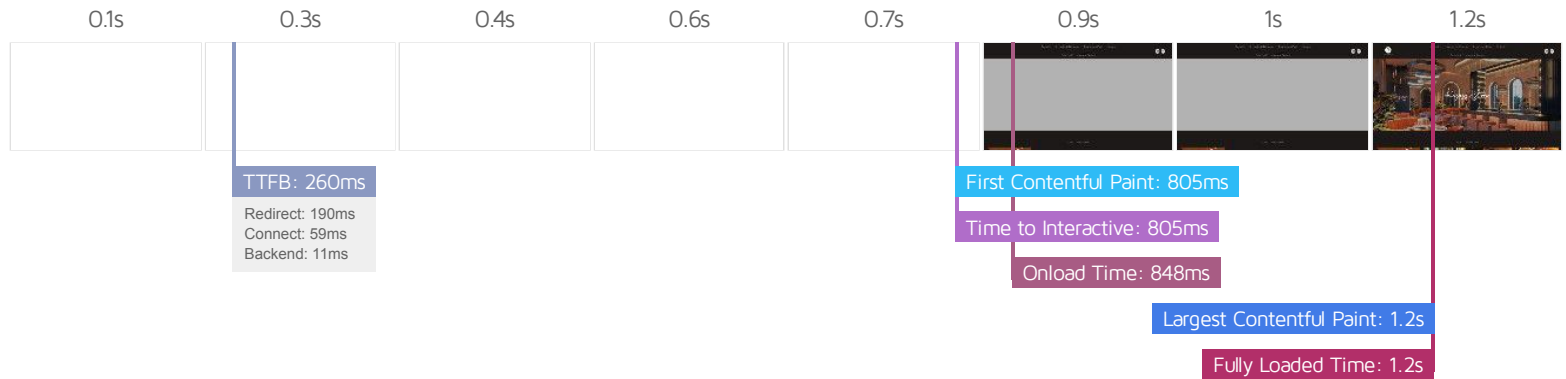
Page sizes and request counts



The waterfall chart displays the loading behaviour of your site in your selected browser. It can be used to discover simple issues such as 404's or more complex issues such as external resources blocking page rendering.

Ragazzi Group – Restaurant Ragazzi à Cannes & Paris





Performance Metrics

First Contentful Paint How quickly content like text or images are painted onto your page. A good user experience is 0.9s or less.	Good - Nothing to do here 805ms	Time to Interactive How long it takes for your page to become fully interactive. A good user experience is 2.5s or less.	Good - Nothing to do here 805ms
Speed Index How quickly the contents of your page are visibly populated. A good user experience is 1.3s or less.	Good - Nothing to do here 1.1s	Total Blocking Time How much time is blocked by scripts during your page loading process. A good user experience is 150ms or less.	Good - Nothing to do here 0ms
Largest Contentful Paint How long it takes for the largest element of content (e.g. a hero image) to be painted on your page. A good user experience is 1.2s or less.	Good - Nothing to do here 1.2s	Cumulative Layout Shift How much your page's layout shifts as it loads. A good user experience is a score of 0.1 or less.	Good - Nothing to do here 0

Browser Timings

Redirect	190ms	Connect	59ms	Backend	11ms
TTFB	260ms	DOM Int.	634ms	DOM Loaded	709ms
First Paint	805ms	Onload	848ms	Fully Loaded	1.2s

IMPACT	AUDIT	
Med	Serve static assets with an efficient cache policy	Potential savings of 1.85MB
Med-Low	Use a Content Delivery Network (CDN)	26 resources found
Low	Avoid multiple page redirects <small>FCP LCP</small>	Potential savings of 185ms
Low	Avoid enormous network payloads <small>LCP</small>	Total size was 1.88MB
Low	Eliminate render-blocking resources <small>FCP LCP</small>	Potential savings of 24ms
Low	Properly size images	Potential savings of 1.25MB
Low	Avoid long main-thread tasks <small>TBT</small>	3 long tasks found
Low	Reduce JavaScript execution time <small>TBT</small>	120ms spent executing JavaScript
Low	Serve images in next-gen formats	Potential savings of 438KB
Low	Defer offscreen images	Potential savings of 5.28KB
Low	Minify JavaScript <small>FCP LCP</small>	Potential savings of 12.0KB
Low	Avoid chaining critical requests <small>FCP LCP</small>	16 chains found
N/A	Avoid an excessive DOM size <small>TBT</small>	240 elements
N/A	Largest Contentful Paint element <small>LCP</small>	1,160 ms
N/A	Reduce initial server response time <small>FCP LCP</small>	Root document took 10ms
N/A	Avoid serving legacy JavaScript to modern browsers <small>TBT</small>	Potential savings of 8.46KB
N/A	Avoid large layout shifts <small>CLS</small>	2 elements found
N/A	Minimize main-thread work <small>TBT</small>	Main-thread busy for 647ms
N/A	Reduce the impact of third-party code <small>TBT</small>	Total size was 9.30KB
N/A	User Timing marks and measures	