



## Performance Report for: <http://www.meja-conseil.com/>

Report generated: Sun, Dec 10, 2023 1:03 AM +0100 (via API)  
 Test Server Location: London, UK  
 Using: Chrome 117.0.0.0, Lighthouse 11.0.0  
 Analysis options: Adblock Plus

<b>B</b>	Performance <b>79%</b>	Structure <b>85%</b>	L. Contentful Paint <b>1.8s</b>	T. Blocking Time <b>163ms</b>	C. Layout Shift <b>0.03</b>
----------	---------------------------	-------------------------	------------------------------------	----------------------------------	--------------------------------

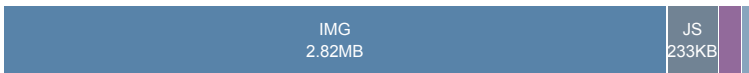
### Top Issues

IMPACT	AUDIT	
High	Reduce initial server response time <small>FCP LCP</small>	Root document took 627ms
Med	Use explicit width and height on image elements <small>CLS</small>	19 images found
Med	Use a Content Delivery Network (CDN)	59 resources found
Med-Low	Avoid enormous network payloads <small>LCP</small>	Total size was 3.25MB
Low	Use passive listeners to improve scrolling performance	1 event listener not passive

### Page Details



Total Page Size - 3.23MB



Total Page Requests - 69



HTML JS CSS IMG Video Font Other

### How does this affect me?

Today's web user expects a fast and seamless website experience. Delivering that fast experience can result in increased visits, conversions and overall happiness.

As if you didn't need more incentive, **Google has announced that they are using page speed in their ranking algorithm.**

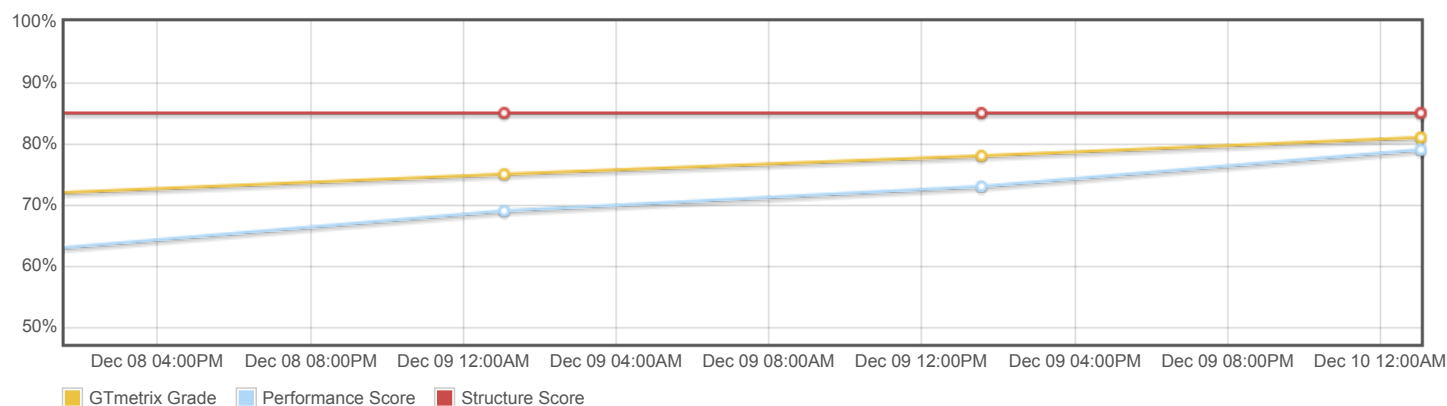
### About GTmetrix

**CARBON60**  
THE MANAGED CLOUD COMPANY

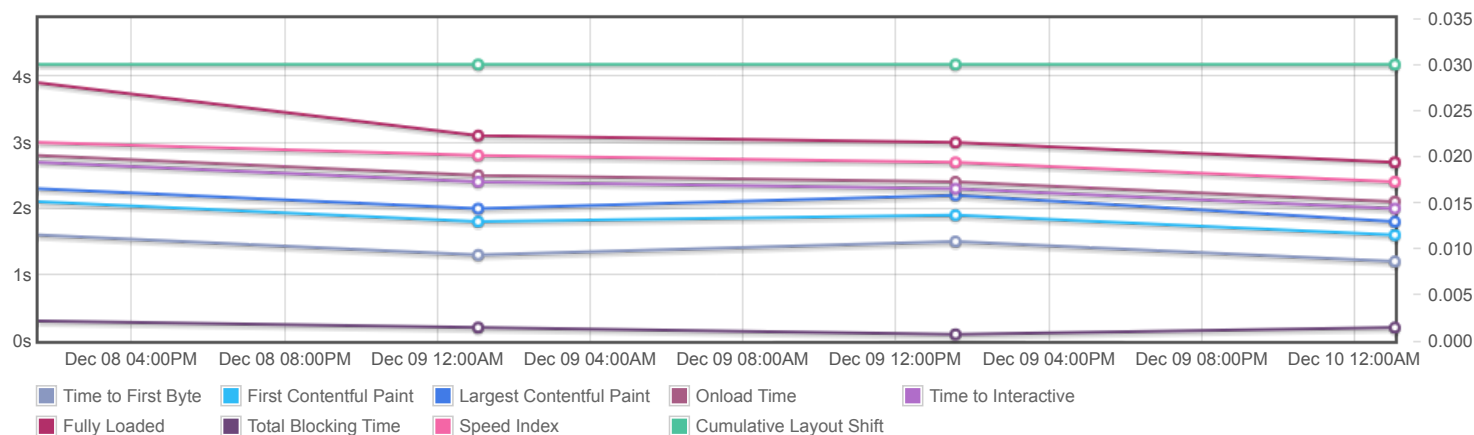
GTmetrix is developed by the good folks at **Carbon60**, a Canadian hosting company with over 27 years experience in web technology.

<https://carbon60.com/>

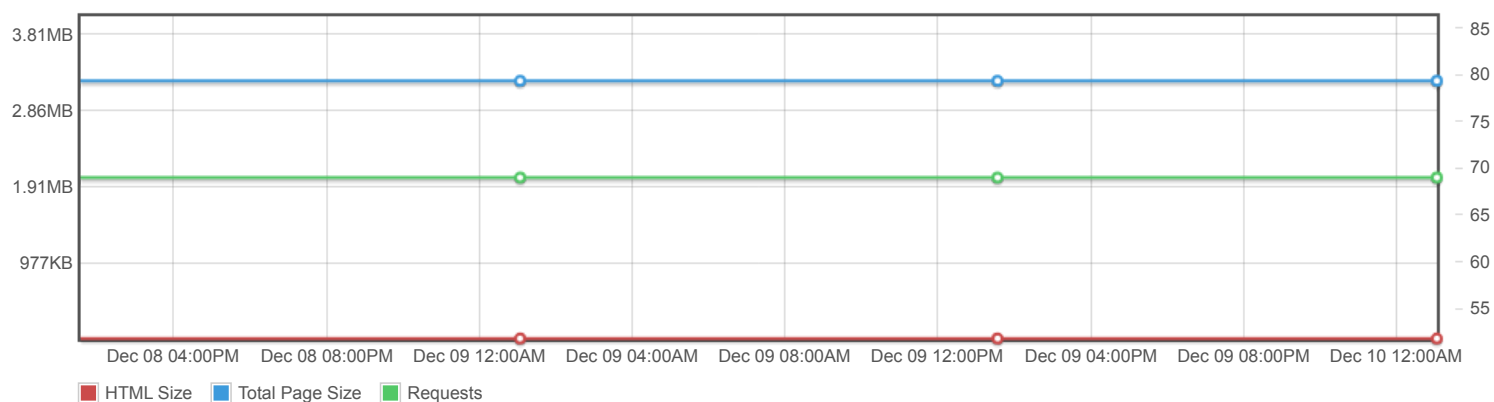
## Page scores



## Page metrics

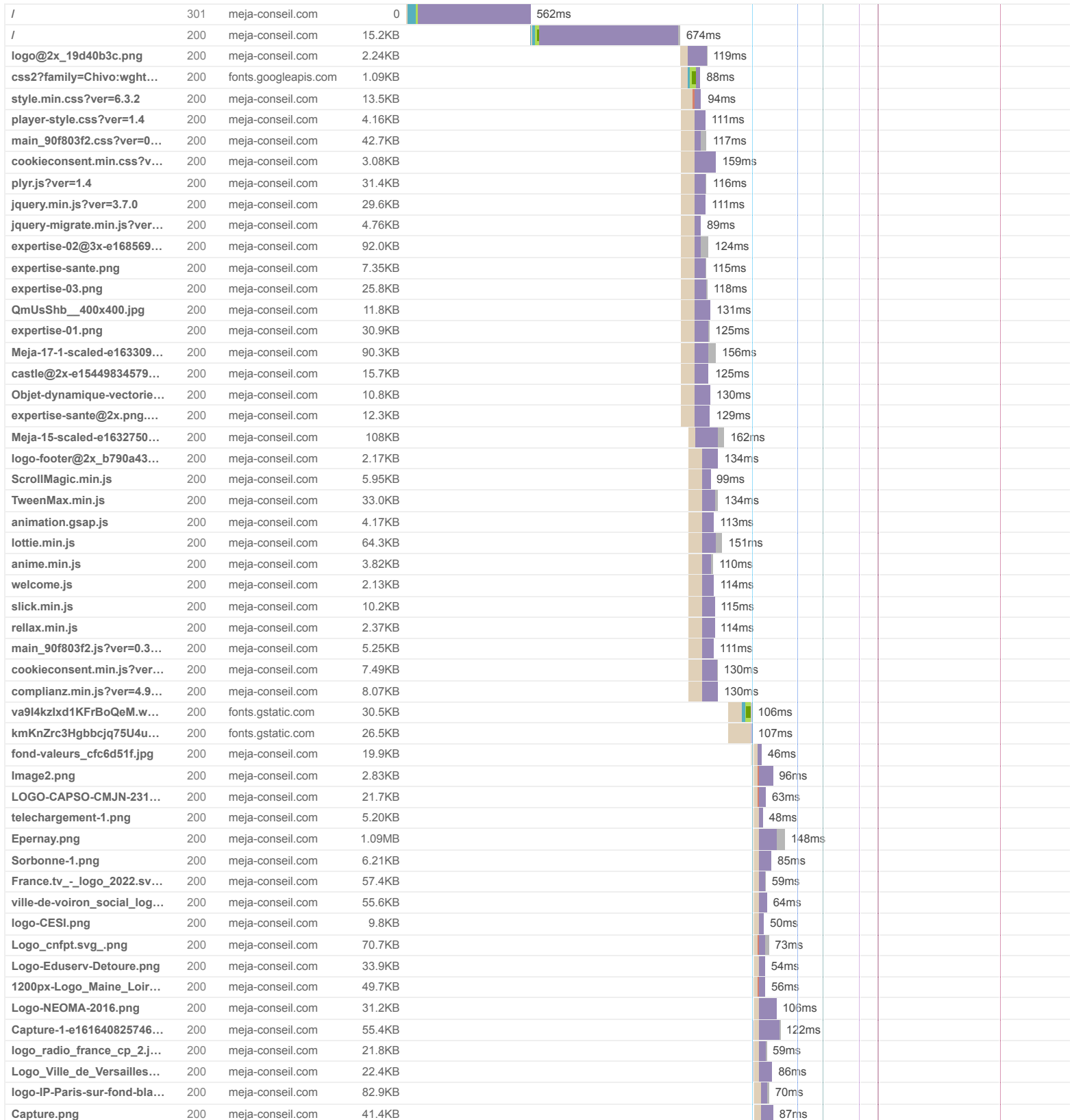


## Page sizes and request counts

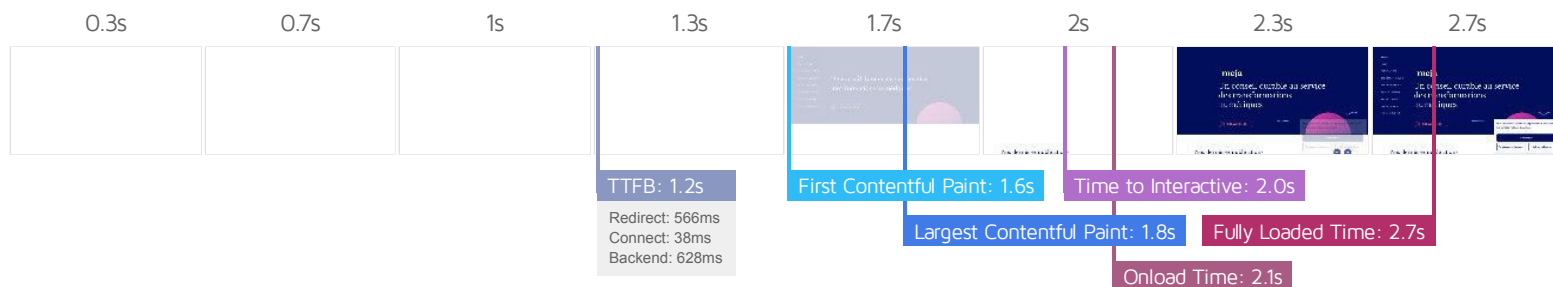


The waterfall chart displays the loading behaviour of your site in your selected browser. It can be used to discover simple issues such as 404's or more complex issues such as external resources blocking page rendering.

## meja - Conseil en transformation numérique



1200px-Ministere-Educati...	200	meja-conseil.com	77.1KB						115ms										
dept-saone-et-loire.png	200	meja-conseil.com	53.1KB						84ms										
Logo-2007-Beauvais-1-e1...	200	meja-conseil.com	105KB						77ms										
15_logo-e1614264628905....	200	meja-conseil.com	232KB						119ms										
france-competences-e161...	200	meja-conseil.com	56.6KB						73ms										
fei-logo-couleurs-rvb-gra...	200	meja-conseil.com	49.2KB						64ms										
agenda9977986.jpg	200	meja-conseil.com	20.0KB						73ms										
Logo_CdC_Touraine-Est_...	200	meja-conseil.com	115KB						68ms										
Academie_de_Paris.svg_~...	200	meja-conseil.com	45.8KB						67ms										
telechargement.png	200	meja-conseil.com	4.36KB						62ms										
contact@2x_14da4dd8.png	200	meja-conseil.com	9.54KB						71ms										
QGYsz_wNahGAdqQ43R...	200	fonts.gstatic.com	49.5KB						131ms										
analytics.js	200	google-analytics.com	20.5KB																
embed?organization_refe...	200	welcomekit.co	4.76KB																
favicon.ico	302	meja-conseil.com	0																517ms
cropped-favicon-32x32.png	200	meja-conseil.com	670B																24ms
<div>69 Requests</div> <div>3.23MB (4.08MB Uncompressed)</div> <div>2.7s (Onload 2.1s)</div>																			



## Performance Metrics

<b>First Contentful Paint</b> How quickly content like text or images are painted onto your page. A good user experience is 0.9s or less.	Longer than recommended <b>1.6s</b>	<b>Time to Interactive</b> How long it takes for your page to become fully interactive. A good user experience is 2.5s or less.	Good - Nothing to do here <b>2.0s</b>
<b>Speed Index</b> How quickly the contents of your page are visibly populated. A good user experience is 1.3s or less.	Much longer than recommended <b>2.4s</b>	<b>Total Blocking Time</b> How much time is blocked by scripts during your page loading process. A good user experience is 150ms or less.	OK, but consider improvement <b>163ms</b>
<b>Largest Contentful Paint</b> How long it takes for the largest element of content (e.g. a hero image) to be painted on your page. A good user experience is 1.2s or less.	Longer than recommended <b>1.8s</b>	<b>Cumulative Layout Shift</b> How much your page's layout shifts as it loads. A good user experience is a score of 0.1 or less.	Good - Nothing to do here <b>0.03</b>

## Browser Timings

Redirect	566ms	Connect	38ms	Backend	628ms
TTFB	1.2s	First Paint	1.6s	DOM Int.	1.9s
DOM Loaded	1.9s	Onload	2.1s	Fully Loaded	2.7s

IMPACT	AUDIT	
High	Reduce initial server response time <small>FCP LCP</small>	Root document took 627ms
Med	Use explicit width and height on image elements <small>CLS</small>	19 images found
Med	Use a Content Delivery Network (CDN)	59 resources found
Med-Low	Avoid enormous network payloads <small>LCP</small>	Total size was 3.25MB
Low	Use passive listeners to improve scrolling performance	1 event listener not passive
Low	Use a <meta name="viewport"> tag with width or initial-scale <small>TBT</small>	No <meta name="viewport"> tag found.
Low	Avoid an excessive DOM size <small>TBT</small>	786 elements
Low	Serve static assets with an efficient cache policy	Potential savings of 15.6KB
Low	Avoid long main-thread tasks <small>TBT</small>	2 long tasks found
Low	Reduce JavaScript execution time <small>TBT</small>	466ms spent executing JavaScript
Low	Avoid chaining critical requests <small>FCP LCP</small>	21 chains found
Low	Properly size images	Potential savings of 231KB
Low	Avoid multiple page redirects <small>FCP LCP</small>	Potential savings of 564ms
Low	Efficiently encode images	Potential savings of 89.3KB
Low	Reduce unused CSS <small>FCP LCP</small>	Potential savings of 46.9KB
Low	Serve images in next-gen formats	Potential savings of 2.09MB
Low	Defer offscreen images	Potential savings of 2.59MB
Low	Avoid non-composited animations <small>CLS</small>	8 animated elements found
Low	Minify JavaScript <small>FCP LCP</small>	Potential savings of 14.7KB
Low	Reduce unused JavaScript <small>LCP</small>	Potential savings of 68.2KB
N/A	Largest Contentful Paint element <small>LCP</small>	1,770 ms
N/A	Avoid serving legacy JavaScript to modern browsers <small>TBT</small>	Potential savings of 8.58KB
N/A	Avoid large layout shifts <small>CLS</small>	5 elements found

N/A	Minimize main-thread workTBT	Main-thread busy for 2.1s
N/A	Reduce the impact of third-party codeTBT	Total size was 134KB
N/A	Eliminate render-blocking resourcesFCPLCP	
N/A	User Timing marks and measures	