



## Performance Report for: <http://www.dolcecasa-immo.com/>

Report generated: Sun, Dec 10, 2023 1:04 AM +0100 (via API)  
Test Server Location: London, UK  
Using: Chrome 117.0.0.0, Lighthouse 11.0.0  
Analysis options: Adblock Plus

	Performance <b>70%</b>	Structure <b>73%</b>	L. Contentful Paint <b>2.3s</b>	T. Blocking Time <b>42ms</b>	C. Layout Shift <b>0.06</b>
--	---------------------------	-------------------------	------------------------------------	---------------------------------	--------------------------------

### Top Issues

IMPACT AUDIT

High	<b>Avoid enormous network payloads</b>	Total size was 10.4MB
High	<b>Reduce initial server response time</b>	Root document took 766ms
Med	<b>Use explicit width and height on image elements</b>	1 image found
Med	<b>Serve static assets with an efficient cache policy</b>	Potential savings of 9.9MB
Med	<b>Use a Content Delivery Network (CDN)</b>	74 resources found

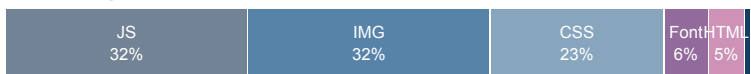
### Page Details



Total Page Size - 6.35MB



Total Page Requests - 100



HTML JS CSS IMG Video Font Other

### How does this affect me?

Today's web user expects a fast and seamless website experience. Delivering that fast experience can result in increased visits, conversions and overall happiness.

As if you didn't need more incentive, **Google has announced that they are using page speed in their ranking algorithm.**

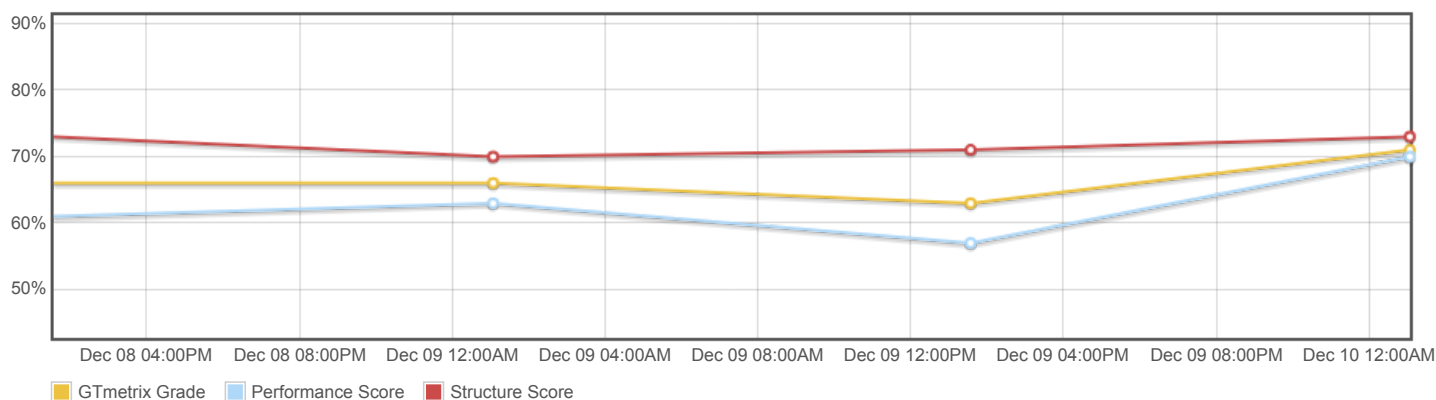
### About GTmetrix

**CARBON60**  
THE MANAGED CLOUD COMPANY

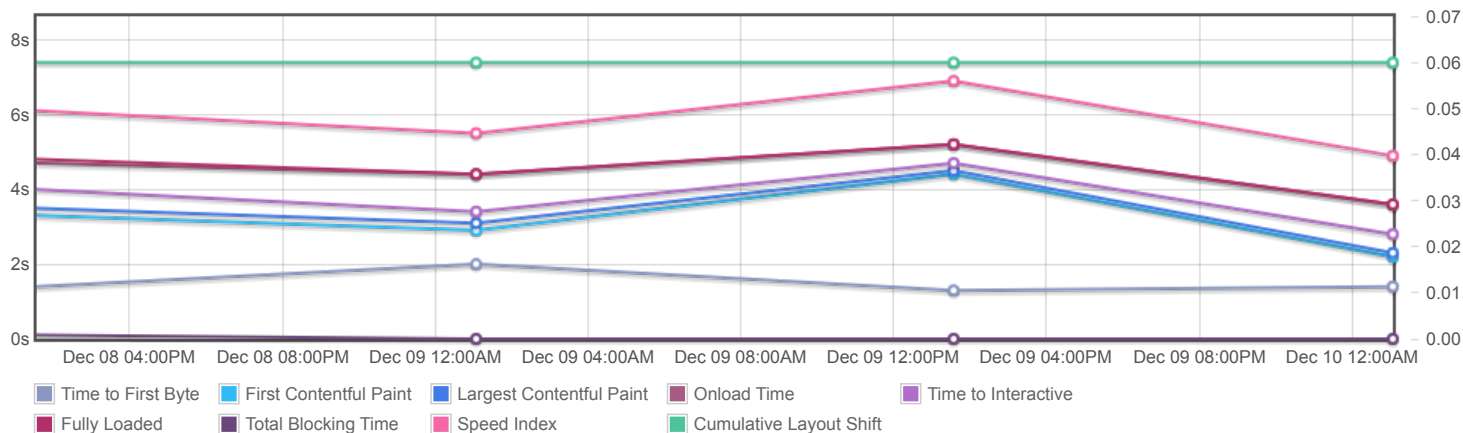
GTmetrix is developed by the good folks at **Carbon60**, a Canadian hosting company with over 27 years experience in web technology.

<https://carbon60.com/>

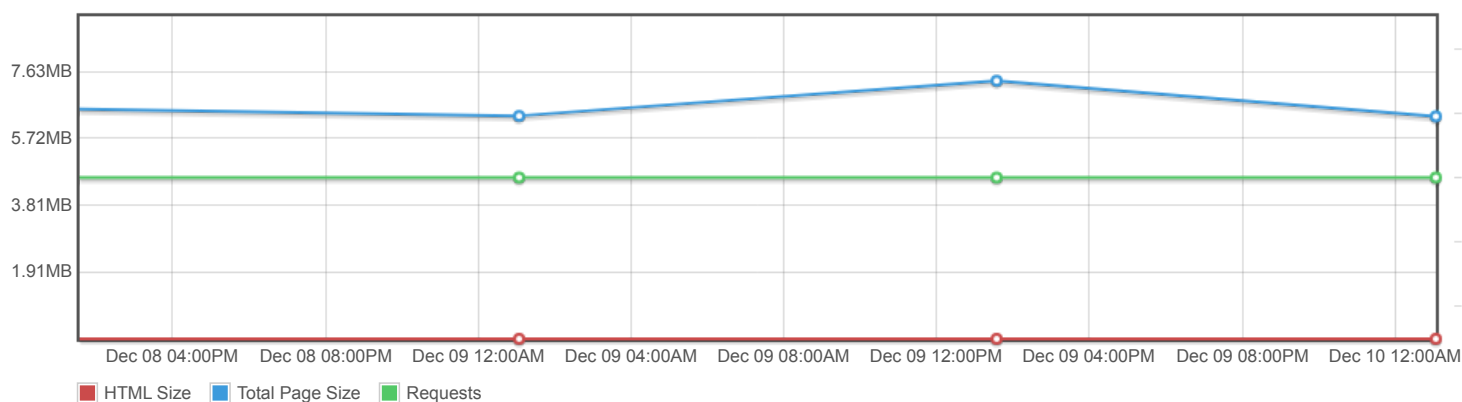
## Page scores



## Page metrics

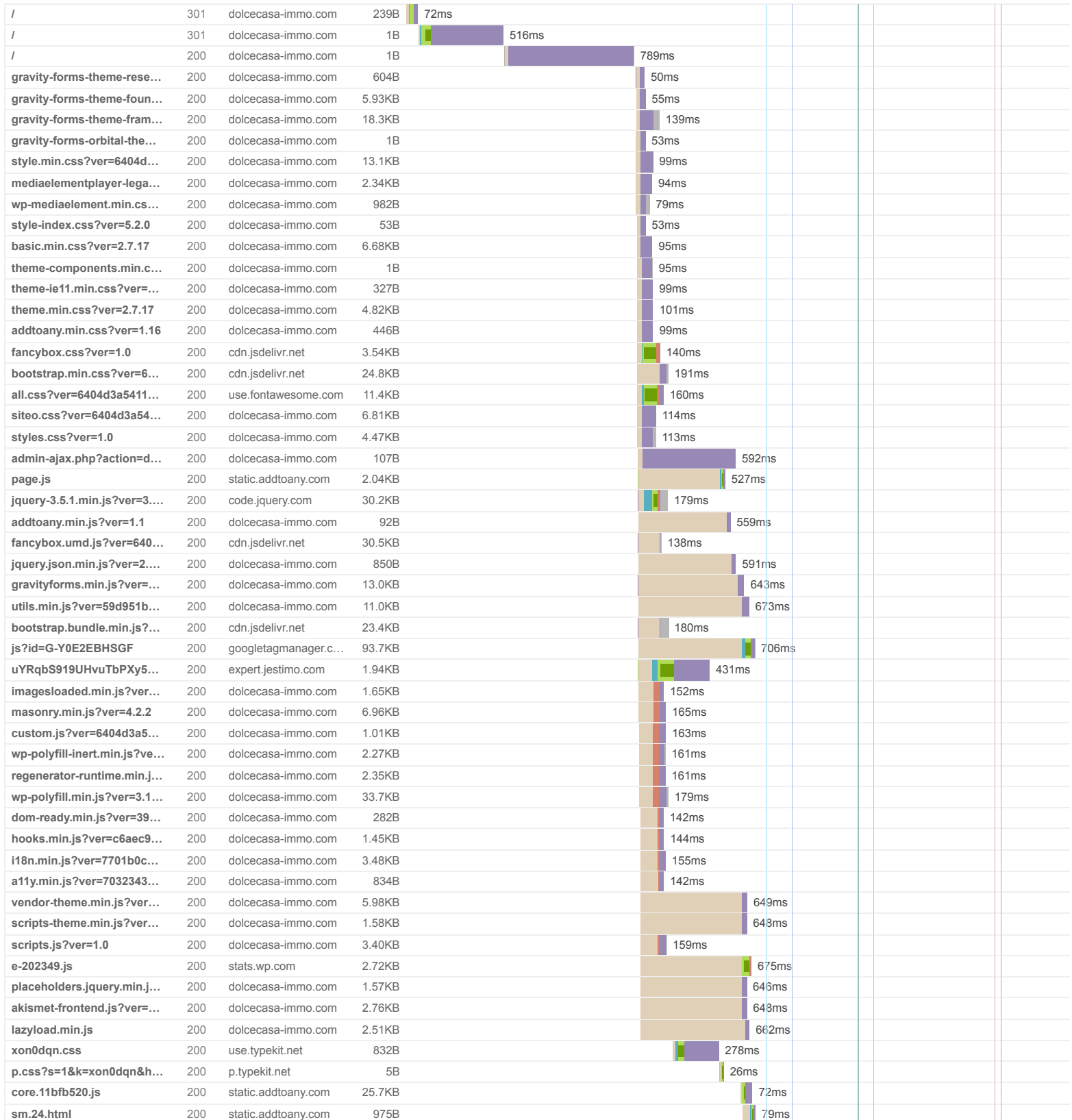


## Page sizes and request counts

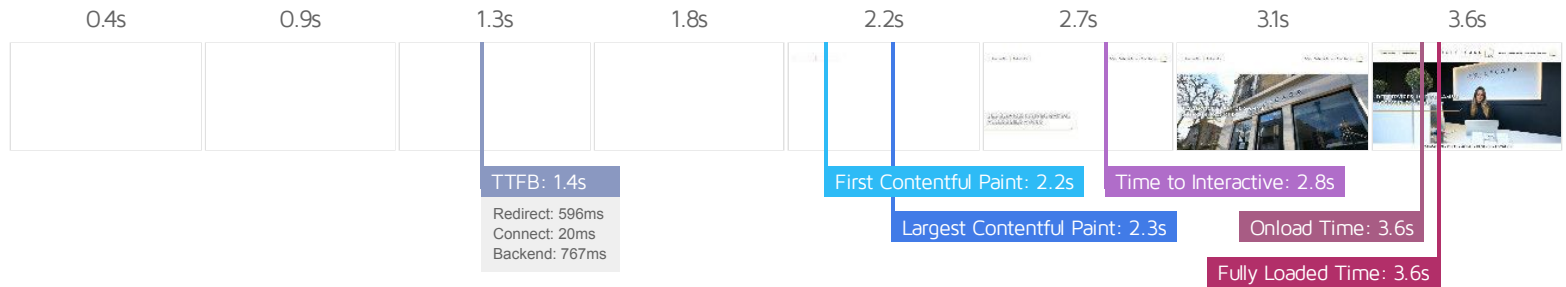


The waterfall chart displays the loading behaviour of your site in your selected browser. It can be used to discover simple issues such as 404's or more complex issues such as external resources blocking page rendering.

## Accueil - Dolce Casa Immobilier



dolcecasa_ico_menu_wh...	200	dolcecasa-immo.com	3.42KB	42ms			
dolcecasa_line_bottom.png	200	dolcecasa-immo.com	2.87KB	45ms			
l?primer=ec1cdd61c86ea...	200	use.typekit.net	20.9KB	171ms			
l?primer=ec1cdd61c86ea...	200	use.typekit.net	20.4KB		605ms		
dolcecasa_accueil-def-2....	(incomplete)	dolcecasa-new.wp2....	5.00MB				>1.4s
dolcecasa_corner_top.png	200	dolcecasa-immo.com	3.27KB	222ms			
dolcecasa_corner_botto...	200	dolcecasa-immo.com	1.43KB	221ms			
dolcecasa_line_bottom_r...	200	dolcecasa-immo.com	3.04KB	215ms			
fa-brands-400.woff2	200	use.fontawesome.com	68.0KB	147ms			
fa-solid-900.woff2	200	use.fontawesome.com	72.1KB		226ms		
g.gif?v=ext&blog=210291...	200	pixel.wp.com	50B		39ms		
wp-emoji-release.min.js?...	200	dolcecasa-immo.com	4.54KB		52ms		
uYRqbS919UHvuTbPXy5...	200	expert.jestimo.com	9.23KB			325ms	
54603549a-600x400.jpg	200	dolcecasa-immo.com	35.3KB			43ms	
54603549a-300x200.jpg	200	dolcecasa-immo.com	11.9KB			46ms	
54603549b-300x200.jpg	200	dolcecasa-immo.com	11.9KB			46ms	
54603549c-300x200.jpg	200	dolcecasa-immo.com	12.5KB			46ms	
54378981a-600x400.jpg	200	dolcecasa-immo.com	25.3KB			42ms	
54378981a-300x200.jpg	200	dolcecasa-immo.com	8.67KB			35ms	
54378981b-300x200.jpg	200	dolcecasa-immo.com	8.81KB			51ms	
54378981c-300x200.jpg	200	dolcecasa-immo.com	9.05KB			50ms	
54434818a-600x400.jpg	200	dolcecasa-immo.com	19.2KB			36ms	
54434818a-300x200.jpg	200	dolcecasa-immo.com	6.92KB			36ms	
54434818b-300x200.jpg	200	dolcecasa-immo.com	8.04KB			41ms	
54434818c-300x200.jpg	200	dolcecasa-immo.com	11.3KB			39ms	
49640354a-600x400.jpg	200	dolcecasa-immo.com	74.5KB			65ms	
49640354a-300x200.jpg	200	dolcecasa-immo.com	20.8KB			52ms	
49640354b-300x200.jpg	200	dolcecasa-immo.com	16.5KB			54ms	
49640354c-300x200.jpg	200	dolcecasa-immo.com	16.6KB			54ms	
54356453a-600x400.jpg	200	dolcecasa-immo.com	82.9KB			57ms	
54356453a-300x200.jpg	200	dolcecasa-immo.com	22.7KB			45ms	
54356453b-300x200.jpg	200	dolcecasa-immo.com	10.4KB			72ms	
54356453c-300x200.jpg	200	dolcecasa-immo.com	9.9KB			89ms	
53442955a-600x400.jpg	200	dolcecasa-immo.com	36.2KB			71ms	
53442955a-300x200.jpg	200	dolcecasa-immo.com	12.4KB			81ms	
53442955b-300x200.jpg	200	dolcecasa-immo.com	10.1KB			81ms	
53442955c-300x200.jpg	200	dolcecasa-immo.com	11.1KB			82ms	
dolcecasa_logo_h_sm_w...	200	dolcecasa-immo.com	11.7KB			60ms	
wid-tmp.css?ref=1702166...	200	expert.jestimo.com	2.36KB				70ms
css?family=Roboto:100,1...	200	fonts.googleapis.com	1.58KB				90ms
jquery-3.4.01.min.js	200	expert.jestimo.com	39.0KB				134ms
1.12.1-jquery-ui.js	200	expert.jestimo.com	174KB				201ms
wid-tmp.js	200	expert.jestimo.com	2.67KB				110ms
arrow.svg	200	expert.jestimo.com	766B				29ms
KFOICnqEu92Fr1MmSU5f...	200	fonts.gstatic.com	15.4KB				107ms
KFOmCnqEu92Fr1Mu4mx...	200	fonts.gstatic.com	15.4KB				106ms
favicon-32x32.png	200	dolcecasa-immo.com	1.17KB				32ms
100 Requests 6.35MB (9.00MB Uncompressed) Fully Loaded 3.6s (Onload 3.6s)							



## Performance Metrics

<b>First Contentful Paint</b> How quickly content like text or images are painted onto your page. A good user experience is 0.9s or less.	Much longer than recommended <b>2.2s</b>	<b>Time to Interactive</b> How long it takes for your page to become fully interactive. A good user experience is 2.5s or less.	OK, but consider improvement <b>2.8s</b>
<b>Speed Index</b> How quickly the contents of your page are visibly populated. A good user experience is 1.3s or less.	Much longer than recommended <b>4.9s</b>	<b>Total Blocking Time</b> How much time is blocked by scripts during your page loading process. A good user experience is 150ms or less.	Good - Nothing to do here <b>42ms</b>
<b>Largest Contentful Paint</b> How long it takes for the largest element of content (e.g. a hero image) to be painted on your page. A good user experience is 1.2s or less.	Longer than recommended <b>2.3s</b>	<b>Cumulative Layout Shift</b> How much your page's layout shifts as it loads. A good user experience is a score of 0.1 or less.	Good - Nothing to do here <b>0.06</b>

## Browser Timings

Redirect	596ms	Connect	20ms	Backend	767ms
TTFB	1.4s	First Paint	2.2s	DOM Int.	2.7s
DOM Loaded	2.7s	Onload	3.6s	Fully Loaded	3.6s

IMPACT	AUDIT	
High	<b>Avoid enormous network payloads</b> <small>LCP</small>	Total size was 10.4MB
High	<b>Reduce initial server response time</b> <small>FCP LCP</small>	Root document took 766ms
Med	<b>Use explicit width and height on image elements</b> <small>CLS</small>	1 image found
Med	<b>Serve static assets with an efficient cache policy</b>	Potential savings of 9.9MB
Med	<b>Use a Content Delivery Network (CDN)</b>	74 resources found
Med-Low	<b>Avoid multiple page redirects</b> <small>FCP LCP</small>	Potential savings of 583ms
Med-Low	<b>Avoid CSS @import</b> <small>FCP LCP</small>	2 resources found
Low	<b>Avoid chaining critical requests</b> <small>FCP LCP</small>	37 chains found
Low	<b>Ensure text remains visible during webfont load</b> <small>FCP LCP</small>	4 fonts found
Low	<b>Eliminate render-blocking resources</b> <small>FCP LCP</small>	Potential savings of 72ms
Low	<b>Avoid an excessive DOM size</b> <small>TBT</small>	727 elements
Low	<b>Avoid long main-thread tasks</b> <small>TBT</small>	4 long tasks found
Low	<b>Avoid large layout shifts</b> <small>CLS</small>	5 elements found
Low	<b>Properly size images</b>	Potential savings of 216KB
Low	<b>Reduce JavaScript execution time</b> <small>TBT</small>	370ms spent executing JavaScript
Low	<b>Reduce unused CSS</b> <small>FCP LCP</small>	Potential savings of 66.6KB
Low	<b>Serve images in next-gen formats</b>	Potential savings of 97.2KB
Low	<b>Minify JavaScript</b> <small>FCP LCP</small>	Potential savings of 35.9KB
Low	<b>Reduce unused JavaScript</b> <small>LCP</small>	Potential savings of 61.1KB
Low	<b>Use HTTP/2 for all resources</b>	7 requests not served via HTTP/2
N/A	<b>Largest Contentful Paint element</b> <small>LCP</small>	2,340 ms
N/A	<b>Avoid serving legacy JavaScript to modern browsers</b> <small>TBT</small>	Potential savings of 25.5KB
N/A	<b>Minimize main-thread work</b> <small>TBT</small>	Main-thread busy for 1.5s

N/A	Reduce the impact of third-party code <small>TBT</small>	Total size was 9.7MB
N/A	User Timing marks and measures	