



Performance Report for: <http://www.ellipseprojects.com/>

Report generated: Sun, Dec 10, 2023 1:04 AM +0100 (via API)
 Test Server Location: London, UK
 Using: Chrome 117.0.0.0, Lighthouse 11.0.0
 Analysis options: Adblock Plus

B	Performance 83%	Structure 89%	L. Contentful Paint 2.4s	T. Blocking Time 0ms	C. Layout Shift 0.05
----------	---------------------------	-------------------------	------------------------------------	--------------------------------	--------------------------------

Top Issues

IMPACT	AUDIT	
Med	Use explicit width and height on image elements	2 images found
Med	Serve static assets with an efficient cache policy	Potential savings of 2.37MB
Med-Low	Use a Content Delivery Network (CDN)	28 resources found
Low	Allow back/forward cache restoration	1 failure reason
Low	Avoid enormous network payloads	Total size was 2.47MB

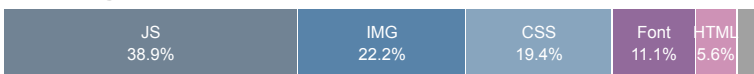
Page Details



Total Page Size - 2.47MB



Total Page Requests - 36



HTML
 JS
 CSS
 IMG
 Video
 Font
 Other

How does this affect me?

Today's web user expects a fast and seamless website experience. Delivering that fast experience can result in increased visits, conversions and overall happiness.

As if you didn't need more incentive, **Google has announced that they are using page speed in their ranking algorithm.**

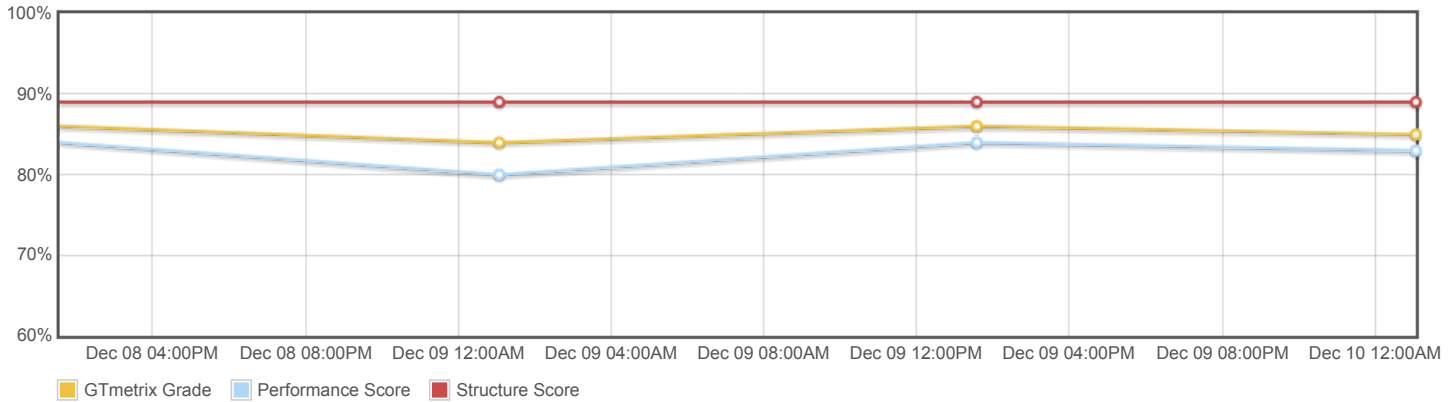
About GTmetrix

CARBON60
THE MANAGED CLOUD COMPANY

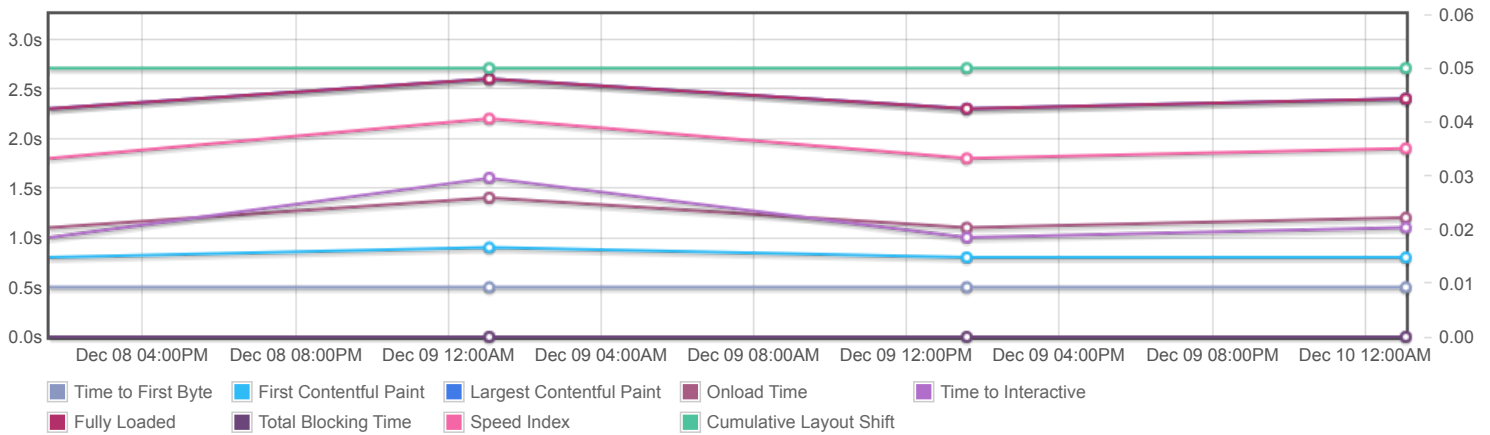
GTmetrix is developed by the good folks at **Carbon60**, a Canadian hosting company with over 27 years experience in web technology.

<https://carbon60.com/>

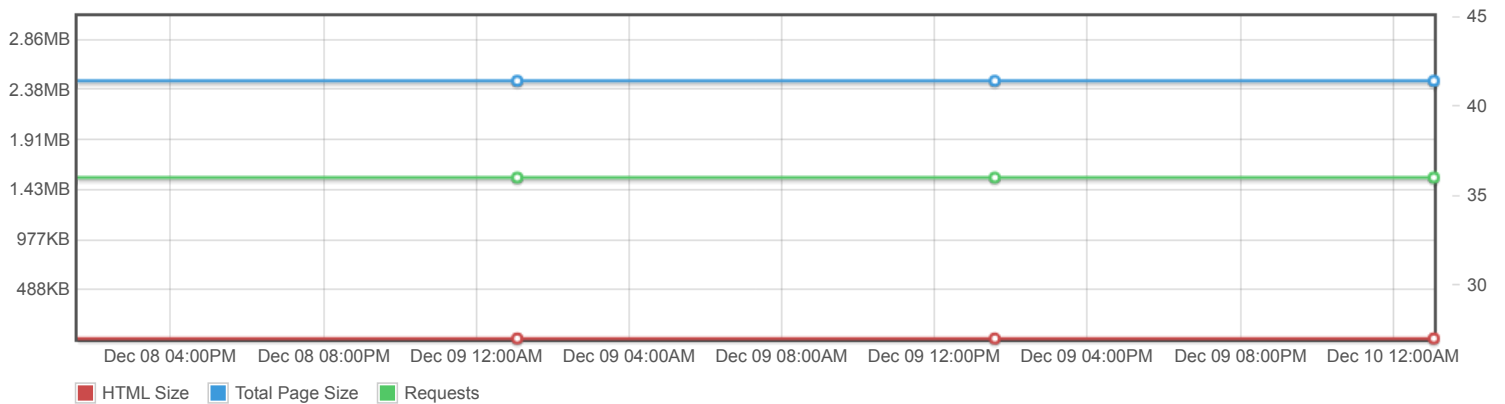
Page scores



Page metrics

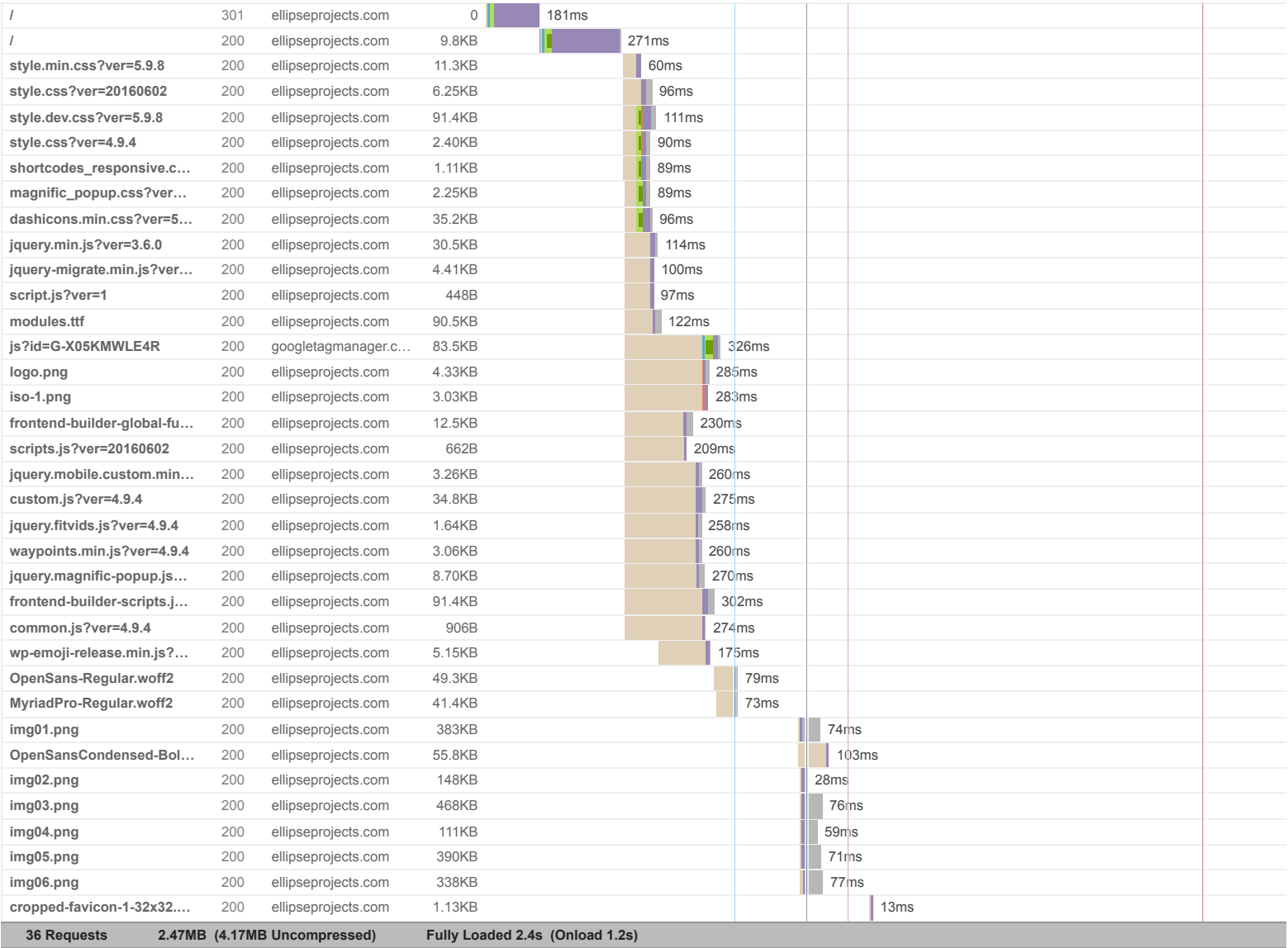


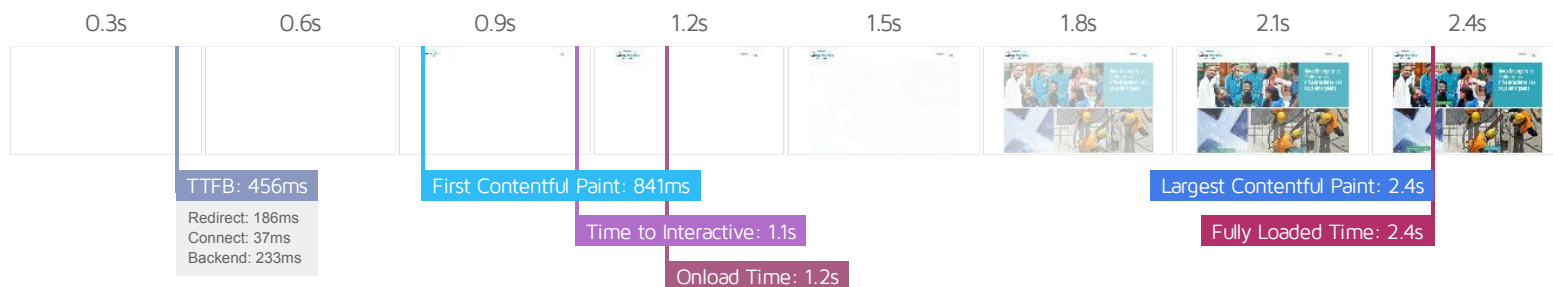
Page sizes and request counts



The waterfall chart displays the loading behaviour of your site in your selected browser. It can be used to discover simple issues such as 404's or more complex issues such as external resources blocking page rendering.

Ellipse projects |





Performance Metrics

First Contentful Paint How quickly content like text or images are painted onto your page. A good user experience is 0.9s or less.	Good - Nothing to do here 841ms	Time to Interactive How long it takes for your page to become fully interactive. A good user experience is 2.5s or less.	Good - Nothing to do here 1.1s
Speed Index How quickly the contents of your page are visibly populated. A good user experience is 1.3s or less.	Longer than recommended 1.9s	Total Blocking Time How much time is blocked by scripts during your page loading process. A good user experience is 150ms or less.	Good - Nothing to do here 0ms
Largest Contentful Paint How long it takes for the largest element of content (e.g. a hero image) to be painted on your page. A good user experience is 1.2s or less.	Much longer than recommended 2.4s	Cumulative Layout Shift How much your page's layout shifts as it loads. A good user experience is a score of 0.1 or less.	Good - Nothing to do here 0.05

Browser Timings

Redirect	186ms	Connect	37ms	Backend	233ms
TTFB	456ms	First Paint	841ms	DOM Int.	1.1s
DOM Loaded	1.1s	Onload	1.2s	Fully Loaded	2.4s

IMPACT	AUDIT	
Med	Use explicit width and height on image elements <small>CLS</small>	2 images found
Med	Serve static assets with an efficient cache policy	Potential savings of 2.37MB
Med-Low	Use a Content Delivery Network (CDN)	28 resources found
Low	Allow back/forward cache restoration	1 failure reason
Low	Avoid enormous network payloads <small>LCP</small>	Total size was 2.47MB
Low	Avoid an excessive DOM size <small>TBT</small>	258 elements
Low	Avoid multiple page redirects <small>FCP</small> <small>LCP</small>	Potential savings of 183ms
Low	Avoid long main-thread tasks <small>TBT</small>	2 long tasks found
Low	Reduce JavaScript execution time <small>TBT</small>	256ms spent executing JavaScript
Low	Reduce unused CSS <small>FCP</small> <small>LCP</small>	Potential savings of 135KB
Low	Serve images in next-gen formats	Potential savings of 1.62MB
Low	Reduce initial server response time <small>FCP</small> <small>LCP</small>	Root document took 232ms
Low	Avoid large layout shifts <small>CLS</small>	5 elements found
Low	Minify CSS <small>FCP</small> <small>LCP</small>	Potential savings of 14.5KB
Low	Avoid non-composited animations <small>CLS</small>	1 animated element found
Low	Minify JavaScript <small>FCP</small> <small>LCP</small>	Potential savings of 25.4KB
Low	Avoid chaining critical requests <small>FCP</small> <small>LCP</small>	21 chains found
Low	Reduce unused JavaScript <small>LCP</small>	Potential savings of 93.8KB
Low	Use HTTP/2 for all resources	34 requests not served via HTTP/2
N/A	Largest Contentful Paint element <small>LCP</small>	2,430 ms
N/A	Eliminate render-blocking resources <small>FCP</small> <small>LCP</small>	Potential savings of 18ms
N/A	Avoid serving legacy JavaScript to modern browsers <small>TBT</small>	Potential savings of 8.56KB
N/A	Minimize main-thread work <small>TBT</small>	Main-thread busy for 992ms

N/A	Reduce the impact of third-party code <small>TBT</small>	Total size was 83.9KB
N/A	User Timing marks and measures	