



Performance Report for: <http://www.cirhahome.org/>

Report generated: Sun, Dec 10, 2023 1:04 AM +0100 (via API)
 Test Server Location: London, UK
 Using: Chrome 117.0.0.0, Lighthouse 11.0.0
 Analysis options: Adblock Plus

D	Performance 67%	Structure 73%	L. Contentful Paint 3.1s	T. Blocking Time 11ms	C. Layout Shift 0
----------	---------------------------	-------------------------	------------------------------------	---------------------------------	-----------------------------

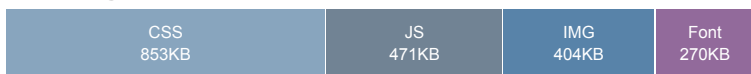
Top Issues

IMPACT	AUDIT	
High	Reduce initial server response time	Root document took 613ms
High	Eliminate render-blocking resources	Potential savings of 1.3s
Med	Don't lazy load Largest Contentful Paint image	LCP was lazy loaded
Med	Serve static assets with an efficient cache policy	Potential savings of 1.55MB
Med	Enable text compression	Potential savings of 882KB

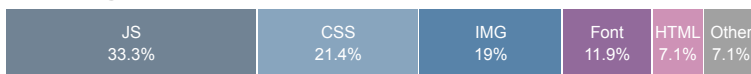
Page Details



Total Page Size - 1.97MB



Total Page Requests - 42



HTML JS CSS IMG Video Font Other

How does this affect me?

Today's web user expects a fast and seamless website experience. Delivering that fast experience can result in increased visits, conversions and overall happiness.

As if you didn't need more incentive, **Google has announced that they are using page speed in their ranking algorithm.**

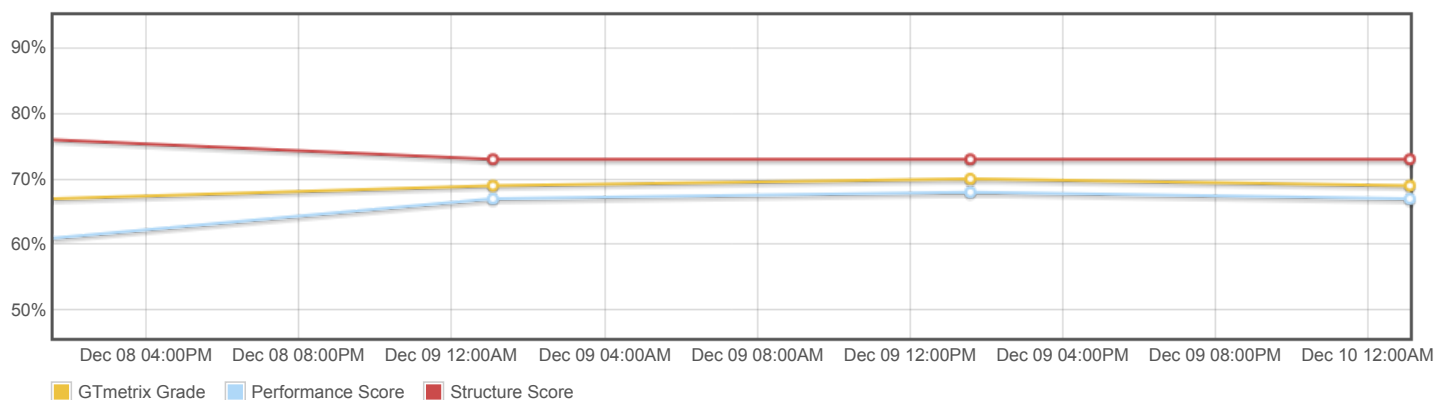
About GTmetrix

CARBON60
THE MANAGED CLOUD COMPANY

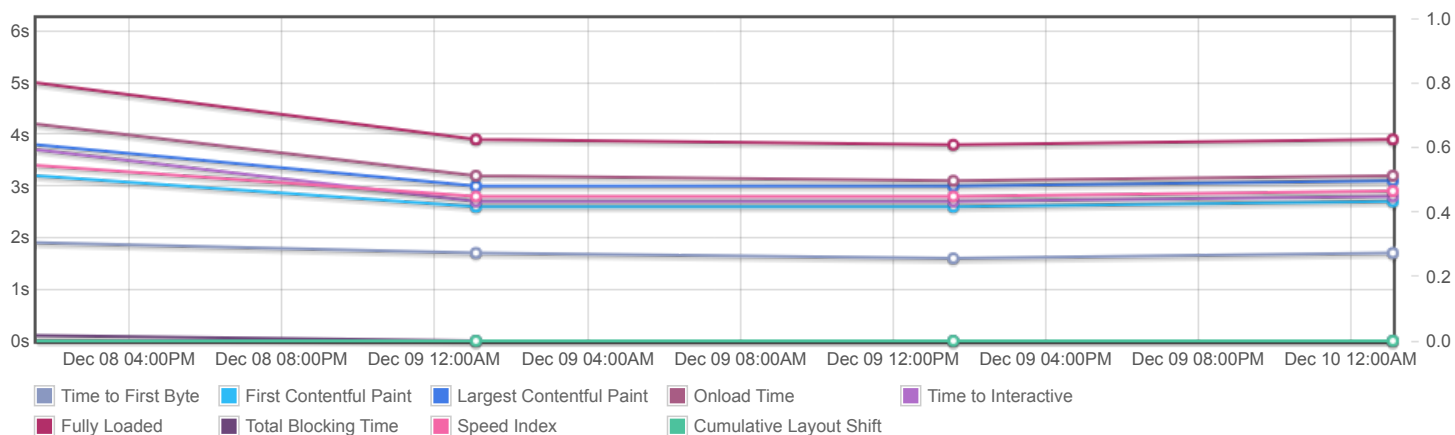
GTmetrix is developed by the good folks at **Carbon60**, a Canadian hosting company with over 27 years experience in web technology.

<https://carbon60.com/>

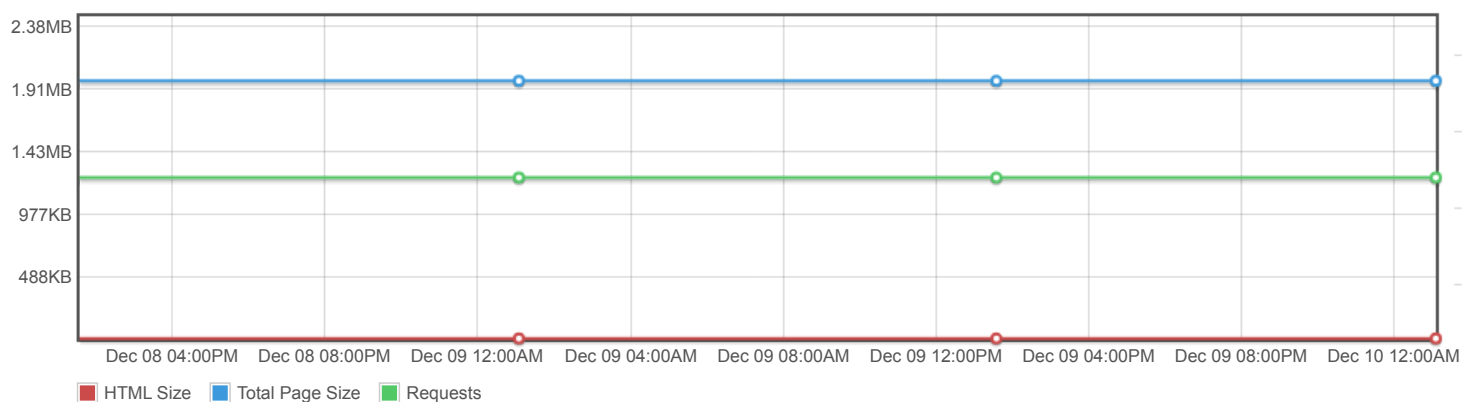
Page scores



Page metrics

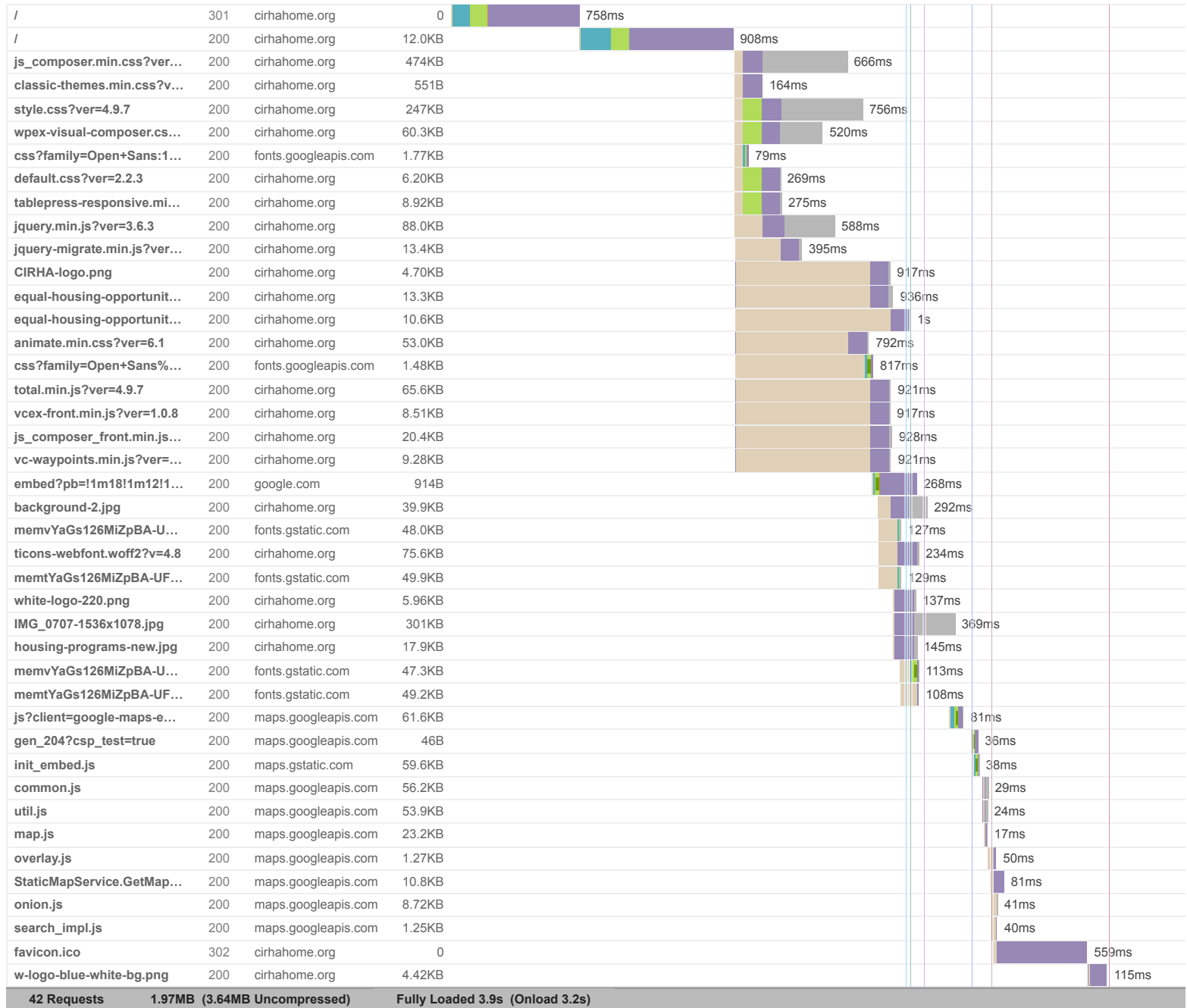


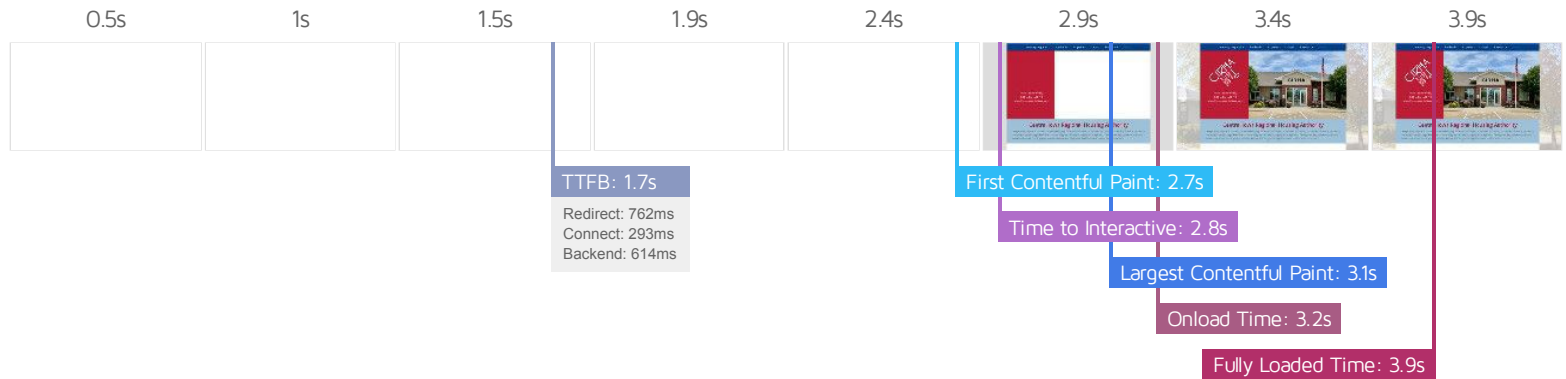
Page sizes and request counts



The waterfall chart displays the loading behaviour of your site in your selected browser. It can be used to discover simple issues such as 404's or more complex issues such as external resources blocking page rendering.

Central Iowa Regional Housing Authority – Housing Programs for Central Iowa Families





Performance Metrics

First Contentful Paint How quickly content like text or images are painted onto your page. A good user experience is 0.9s or less.	Much longer than recommended 2.7s	Time to Interactive How long it takes for your page to become fully interactive. A good user experience is 2.5s or less.	OK, but consider improvement 2.8s
Speed Index How quickly the contents of your page are visibly populated. A good user experience is 1.3s or less.	Much longer than recommended 2.9s	Total Blocking Time How much time is blocked by scripts during your page loading process. A good user experience is 150ms or less.	Good - Nothing to do here 11ms
Largest Contentful Paint How long it takes for the largest element of content (e.g. a hero image) to be painted on your page. A good user experience is 1.2s or less.	Much longer than recommended 3.1s	Cumulative Layout Shift How much your page's layout shifts as it loads. A good user experience is a score of 0.1 or less.	Good - Nothing to do here 0

Browser Timings

Redirect	762ms	Connect	293ms	Backend	614ms
TTFB	1.7s	First Paint	2.7s	DOM Int.	2.7s
DOM Loaded	2.7s	Onload	3.2s	Fully Loaded	3.9s

IMPACT	AUDIT	
High	Reduce initial server response time <small>FCP LCP</small>	Root document took 613ms
High	Eliminate render-blocking resources <small>FCP LCP</small>	Potential savings of 1.3s
Med	Don't lazy load Largest Contentful Paint image <small>LCP</small>	LCP was lazy loaded
Med	Serve static assets with an efficient cache policy	Potential savings of 1.55MB
Med	Enable text compression <small>FCP LCP</small>	Potential savings of 882KB
Med-Low	Use a Content Delivery Network (CDN)	20 resources found
Med-Low	Reduce unused CSS <small>FCP LCP</small>	Potential savings of 820KB
Low	Use HTTP/2 for all resources	Potential savings of 680ms
Low	Avoid chaining critical requests <small>FCP LCP</small>	17 chains found
Low	Ensure text remains visible during webfont load <small>FCP LCP</small>	3 fonts found
Low	Avoid enormous network payloads <small>LCP</small>	Total size was 1.97MB
Low	Avoid long main-thread tasks <small>TBT</small>	2 long tasks found
Low	Serve images in next-gen formats	Potential savings of 142KB
Low	Avoid an excessive DOM size <small>TBT</small>	407 elements
Low	Avoid multiple page redirects <small>FCP LCP</small>	Potential savings of 761ms
Low	Reduce JavaScript execution time <small>TBT</small>	109ms spent executing JavaScript
Low	Defer offscreen images	Potential savings of 14.8KB
Low	Minify JavaScript <small>FCP LCP</small>	Potential savings of 12.0KB
Low	Reduce unused JavaScript <small>LCP</small>	Potential savings of 71.5KB
N/A	Largest Contentful Paint element <small>LCP</small>	3,070 ms
N/A	Avoid serving legacy JavaScript to modern browsers <small>TBT</small>	Potential savings of 8.63KB
N/A	Avoid large layout shifts <small>CLS</small>	5 elements found
N/A	Minimize main-thread work <small>TBT</small>	Main-thread busy for 584ms

N/A	Reduce the impact of third-party code <small>TBT</small>	Total size was 478KB
N/A	User Timing marks and measures	