



Performance Report for: http://www.letp-immobilier.com/

Report generated: Sun, Dec 10, 2023 1:04 AM +0100 (via API)
 Test Server Location: London, UK
 Using: Chrome 117.0.0.0, Lighthouse 11.0.0
 Analysis options: Adblock Plus

D	Performance 64%	Structure 77%	L. Contentful Paint 1.2s	T. Blocking Time 625ms	C. Layout Shift 0
----------	---------------------------	-------------------------	------------------------------------	----------------------------------	-----------------------------

Top Issues

IMPACT	AUDIT	
High	Avoid enormous network payloads	Total size was 36.4MB
Med	Use explicit width and height on image elements	1 image found
Med	Use a Content Delivery Network (CDN)	64 resources found
Med-Low	Eliminate render-blocking resources	Potential savings of 336ms
Med-Low	Avoid an excessive DOM size	1,160 elements

Page Details



Total Page Size - 33.3MB



Total Page Requests - 76



HTML
 JS
 CSS
 IMG
 Video
 Font
 Other

How does this affect me?

Today's web user expects a fast and seamless website experience. Delivering that fast experience can result in increased visits, conversions and overall happiness.

As if you didn't need more incentive, **Google has announced that they are using page speed in their ranking algorithm.**

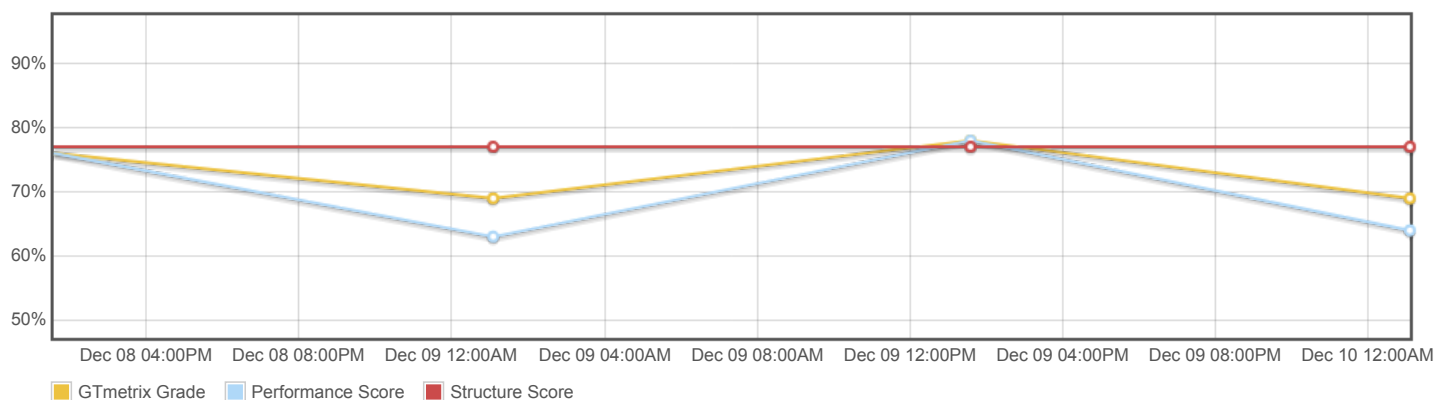
About GTmetrix

CARBON60
THE MANAGED CLOUD COMPANY

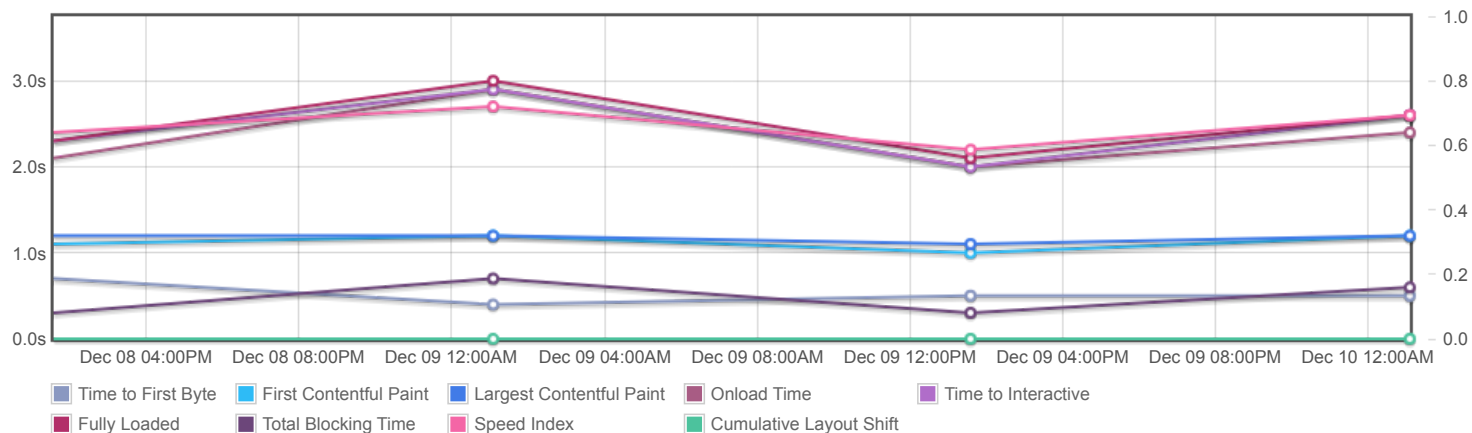
GTmetrix is developed by the good folks at **Carbon60**, a Canadian hosting company with over 27 years experience in web technology.

<https://carbon60.com/>

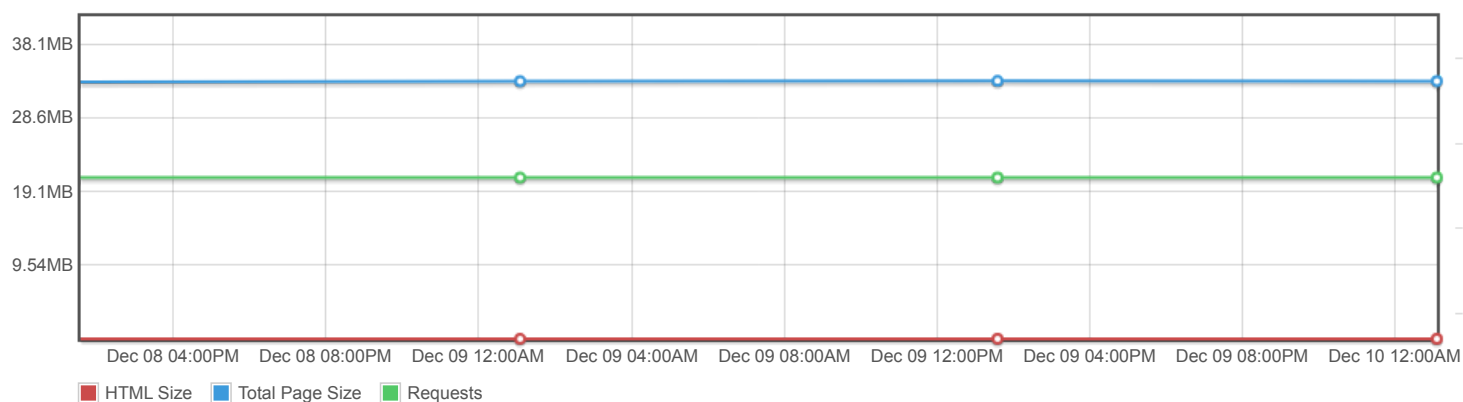
Page scores



Page metrics

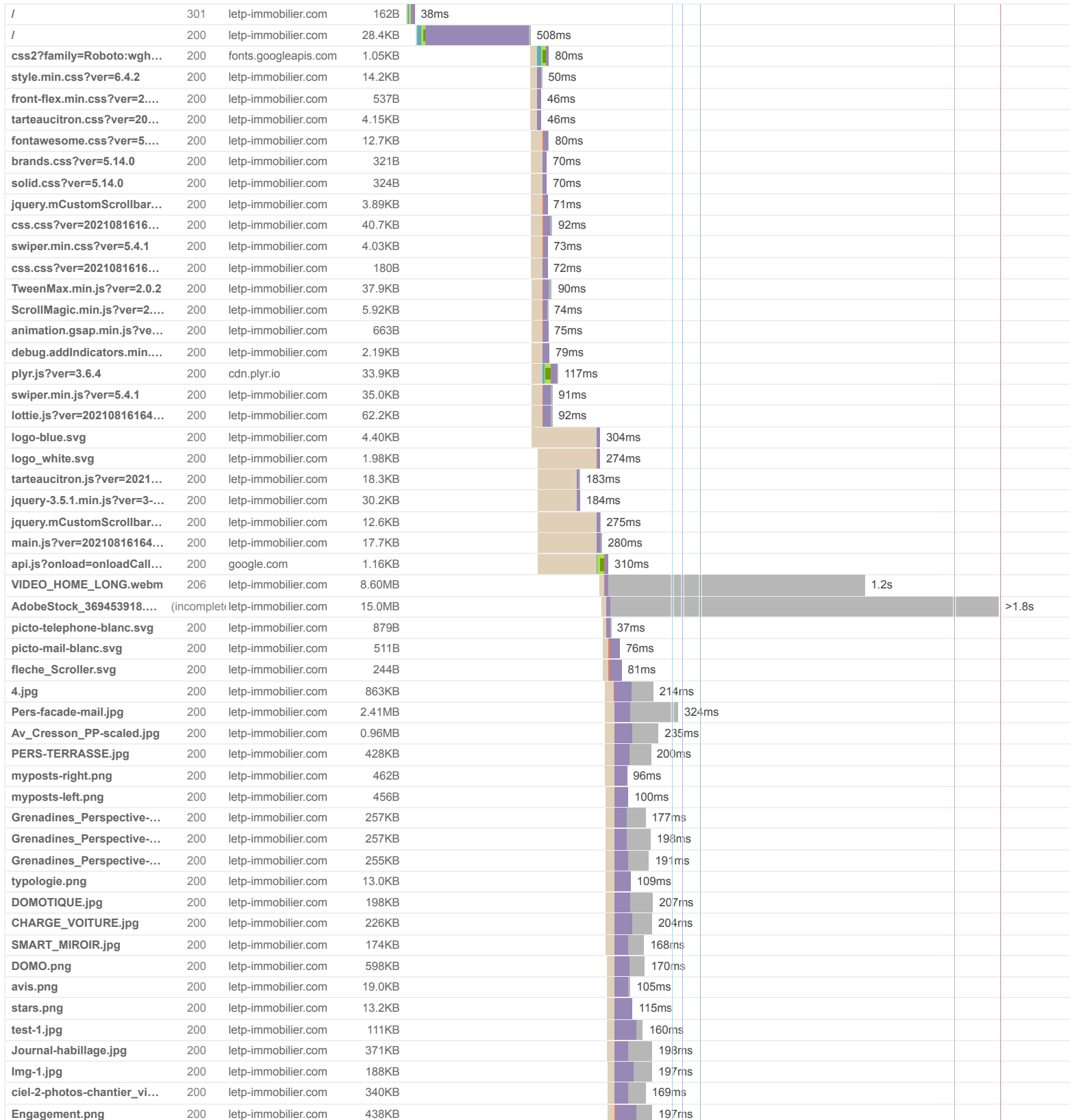


Page sizes and request counts

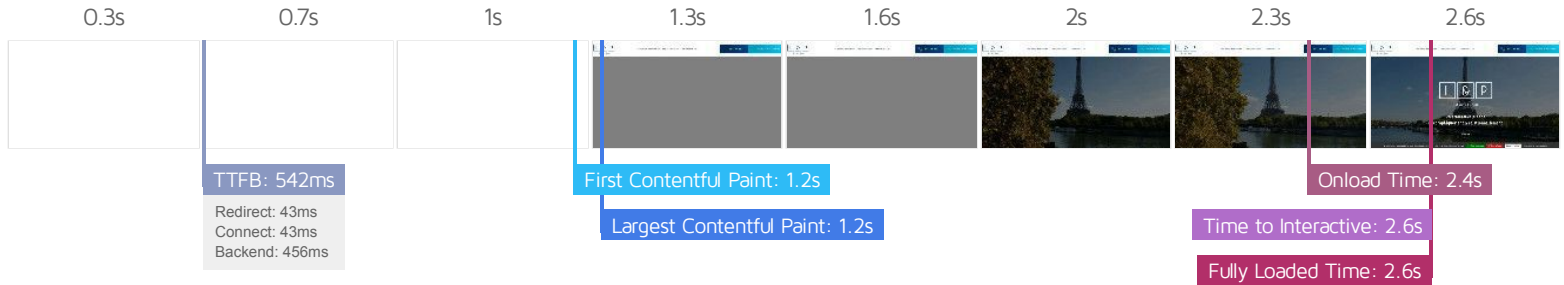


The waterfall chart displays the loading behaviour of your site in your selected browser. It can be used to discover simple issues such as 404's or more complex issues such as external resources blocking page rendering.

Accueil - L&P Immobilier



Garanties-1.png	200	letp-immobilier.com	242KB		182ms			
Presse.png	200	letp-immobilier.com	257KB		201ms			
Realisation.png	200	letp-immobilier.com	72.5KB		153ms			
Equipe.png	200	letp-immobilier.com	188KB		210ms			
stroke-1.png	200	letp-immobilier.com	145KB		148ms			
pattern_LP-v2.png	200	letp-immobilier.com	77.6KB		154ms			
KFOICnqEu92Fr1MmWUlf...	200	fonts.gstatic.com	15.5KB		326ms			
fa-brands-400.woff2	200	letp-immobilier.com	76.0KB		307ms			
KFOmCnqEu92Fr1Mu4mx...	200	fonts.gstatic.com	15.4KB		331ms			
Ecem-Bold.woff2	200	letp-immobilier.com	26.1KB		303ms			
Ecem-Regular.woff2	200	letp-immobilier.com	23.6KB		302ms			
recaptcha__en.js	200	gstatic.com	200KB				113ms	
pg-swip-on.svg	200	letp-immobilier.com	235B				39ms	
pg-swip-off.svg	200	letp-immobilier.com	231B				39ms	
puce.png	200	letp-immobilier.com	268B				33ms	
puce_vide.png	200	letp-immobilier.com	235B				33ms	
wp-emoji-release.min.js?...	200	letp-immobilier.com	4.92KB				19ms	
1f3e1.svg	200	s.w.org	894B				94ms	
2728.svg	200	s.w.org	788B				94ms	
tarteaucitron.css?v=2021...	200	letp-immobilier.com	4.15KB					56ms
tarteaucitron.fr.js?v=2021...	200	letp-immobilier.com	1.34KB					56ms
cropped-FAV-wordpress-...	200	letp-immobilier.com	684B					49 ns
tarteaucitron.services.js?...	200	letp-immobilier.com	21.9KB					3 ms
<div> 76 Requests 33.3MB (35.2MB Uncompressed) Fully Loaded 2.6s (Onload 2.4s) </div>								



Performance Metrics

First Contentful Paint

How quickly content like text or images are painted onto your page. A good user experience is 0.9s or less.

OK, but consider improvement

1.2s

Time to Interactive

How long it takes for your page to become fully interactive. A good user experience is 2.5s or less.

OK, but consider improvement

2.6s

Speed Index

How quickly the contents of your page are visibly populated. A good user experience is 1.3s or less.

Much longer than recommended

2.6s

Total Blocking Time

How much time is blocked by scripts during your page loading process. A good user experience is 150ms or less.

Much longer than recommended

625ms

Largest Contentful Paint

How long it takes for the largest element of content (e.g. a hero image) to be painted on your page. A good user experience is 1.2s or less.

OK, but consider improvement

1.2s

Cumulative Layout Shift

How much your page's layout shifts as it loads. A good user experience is a score of 0.1 or less.

Good - Nothing to do here

0

Browser Timings

Redirect

43ms

Connect

43ms

Backend

456ms

TTFB

542ms

First Paint

1.2s

DOM Int.

1.3s

DOM Loaded

1.3s

Onload

2.4s

Fully Loaded

2.6s

IMPACT	AUDIT	
High	Avoid enormous network payloads <small>LCP</small>	Total size was 36.4MB
Med	Use explicit width and height on image elements <small>CLS</small>	1 image found
Med	Use a Content Delivery Network (CDN)	64 resources found
Med-Low	Eliminate render-blocking resources <small>FCP LCP</small>	Potential savings of 336ms
Med-Low	Avoid an excessive DOM size <small>TBT</small>	1,160 elements
Low	Use passive listeners to improve scrolling performance	2 event listeners not passive
Low	Allow back/forward cache restoration	1 failure reason
Low	Avoid long main-thread tasks <small>TBT</small>	8 long tasks found
Low	Avoid chaining critical requests <small>FCP LCP</small>	24 chains found
Low	Reduce JavaScript execution time <small>TBT</small>	1.1s spent executing JavaScript
Low	Avoid multiple page redirects <small>FCP LCP</small>	Potential savings of 40ms
Low	Efficiently encode images	Potential savings of 2.46MB
Low	Reduce unused CSS <small>FCP LCP</small>	Potential savings of 64.2KB
Low	Serve images in next-gen formats	Potential savings of 6.46MB
Low	Reduce initial server response time <small>FCP LCP</small>	Root document took 455ms
Low	Defer offscreen images	Potential savings of 3.59MB
Low	Minify CSS <small>FCP LCP</small>	Potential savings of 2.26KB
Low	Avoid non-composited animations <small>CLS</small>	2 animated elements found
Low	Minify JavaScript <small>FCP LCP</small>	Potential savings of 29.0KB
Low	Reduce unused JavaScript <small>LCP</small>	Potential savings of 236KB
N/A	Largest Contentful Paint element <small>LCP</small>	1,220 ms
N/A	Avoid serving legacy JavaScript to modern browsers <small>TBT</small>	Potential savings of 8.52KB
N/A	Avoid large layout shifts <small>CLS</small>	3 elements found

N/A	Minimize main-thread work TBT	Main-thread busy for 3.2s
N/A	Reduce the impact of third-party code TBT	Total size was 270KB
N/A	User Timing marks and measures	