



Performance Report for:

<http://www.theatredepoche-montparnasse.com/>

Report generated: Sun, Dec 10, 2023 1:05 AM +0100 (via API)
Test Server Location: London, UK
Using: Chrome 117.0.0.0, Lighthouse 11.0.0
Analysis options: Adblock Plus

B	Performance 78%	Structure 94%	L. Contentful Paint 2.2s	T. Blocking Time 6ms	C. Layout Shift 0
----------	---------------------------	-------------------------	------------------------------------	--------------------------------	-----------------------------

Top Issues

IMPACT AUDIT

Med-Low	Eliminate render-blocking resources <small>FCP LCP</small>	Potential savings of 276ms
Med-Low	Use a Content Delivery Network (CDN)	20 resources found
Low	Use passive listeners to improve scrolling performance	4 event listeners not passive
Low	Avoid chaining critical requests <small>FCP LCP</small>	12 chains found
Low	Avoid long main-thread tasks <small>TBT</small>	2 long tasks found

Page Details



Total Page Size - 1.05MB



Total Page Requests - 35



HTML JS CSS IMG Video Font Other

How does this affect me?

Today's web user expects a fast and seamless website experience. Delivering that fast experience can result in increased visits, conversions and overall happiness.

As if you didn't need more incentive, **Google has announced that they are using page speed in their ranking algorithm.**

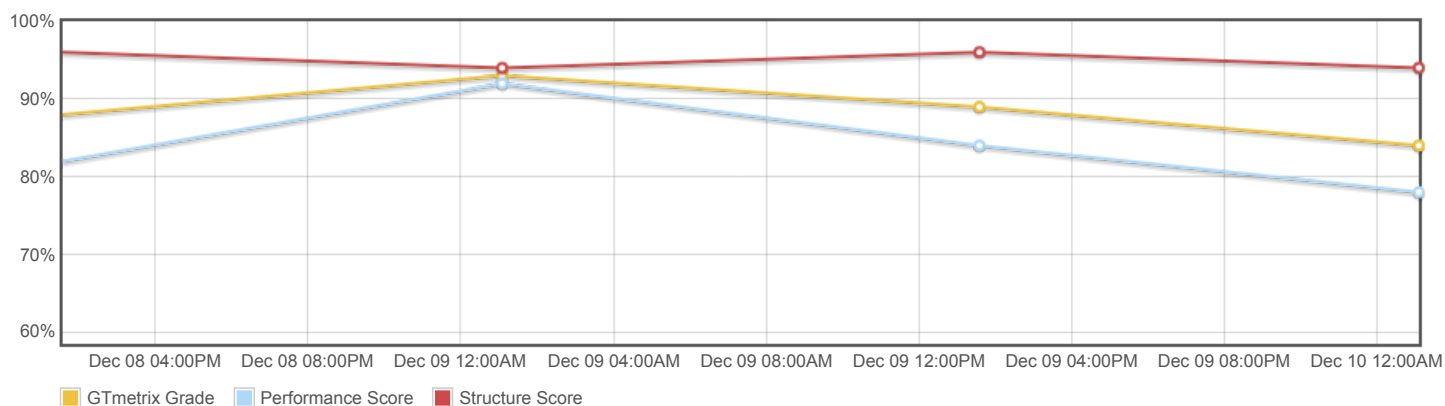
About GTmetrix

CARBON60
THE MANAGED CLOUD COMPANY

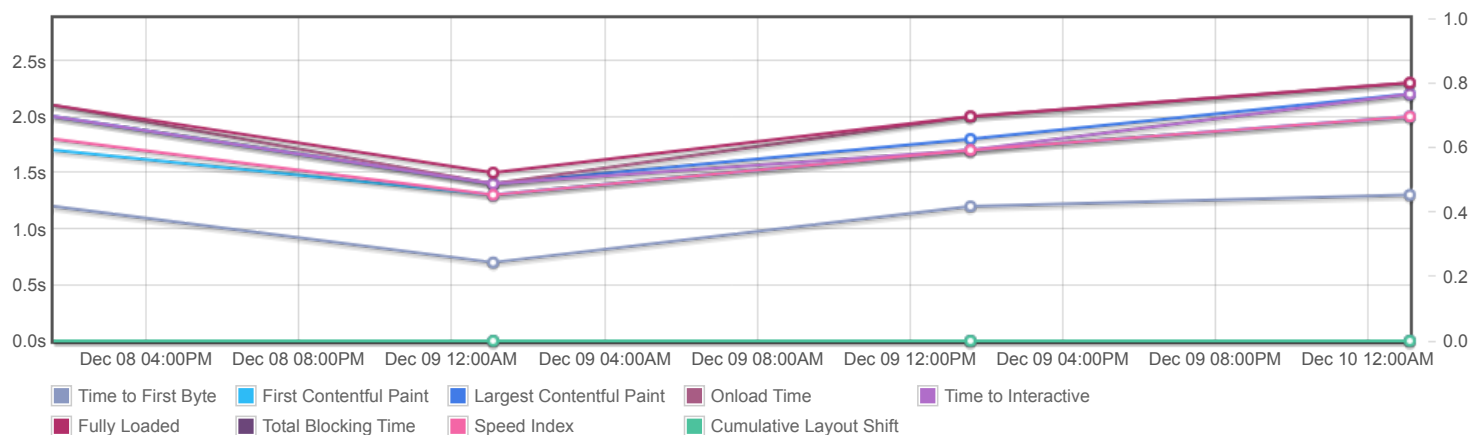
GTmetrix is developed by the good folks at **Carbon60**, a Canadian hosting company with over 27 years experience in web technology.

<https://carbon60.com/>

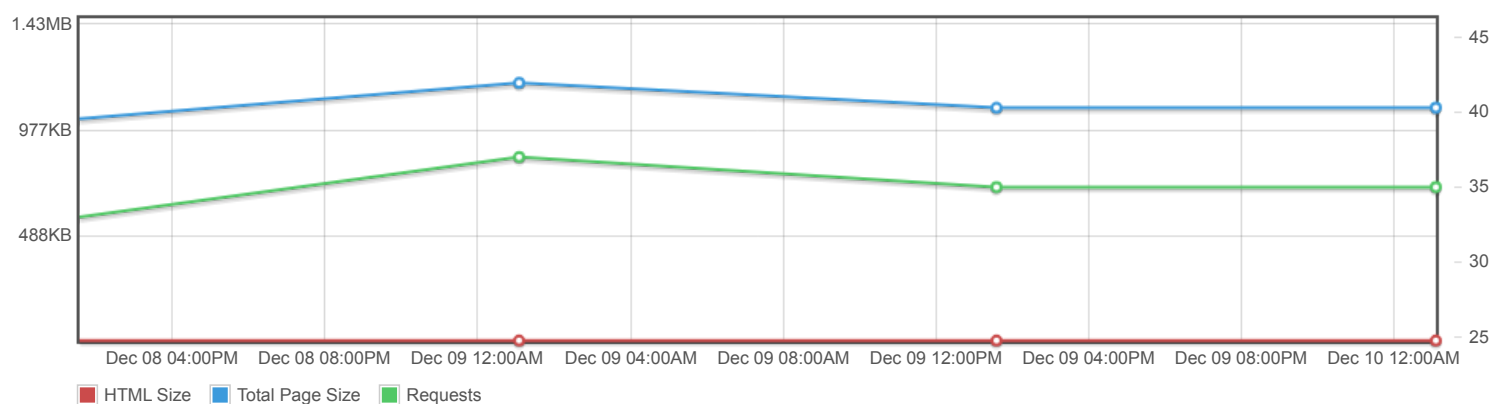
Page scores



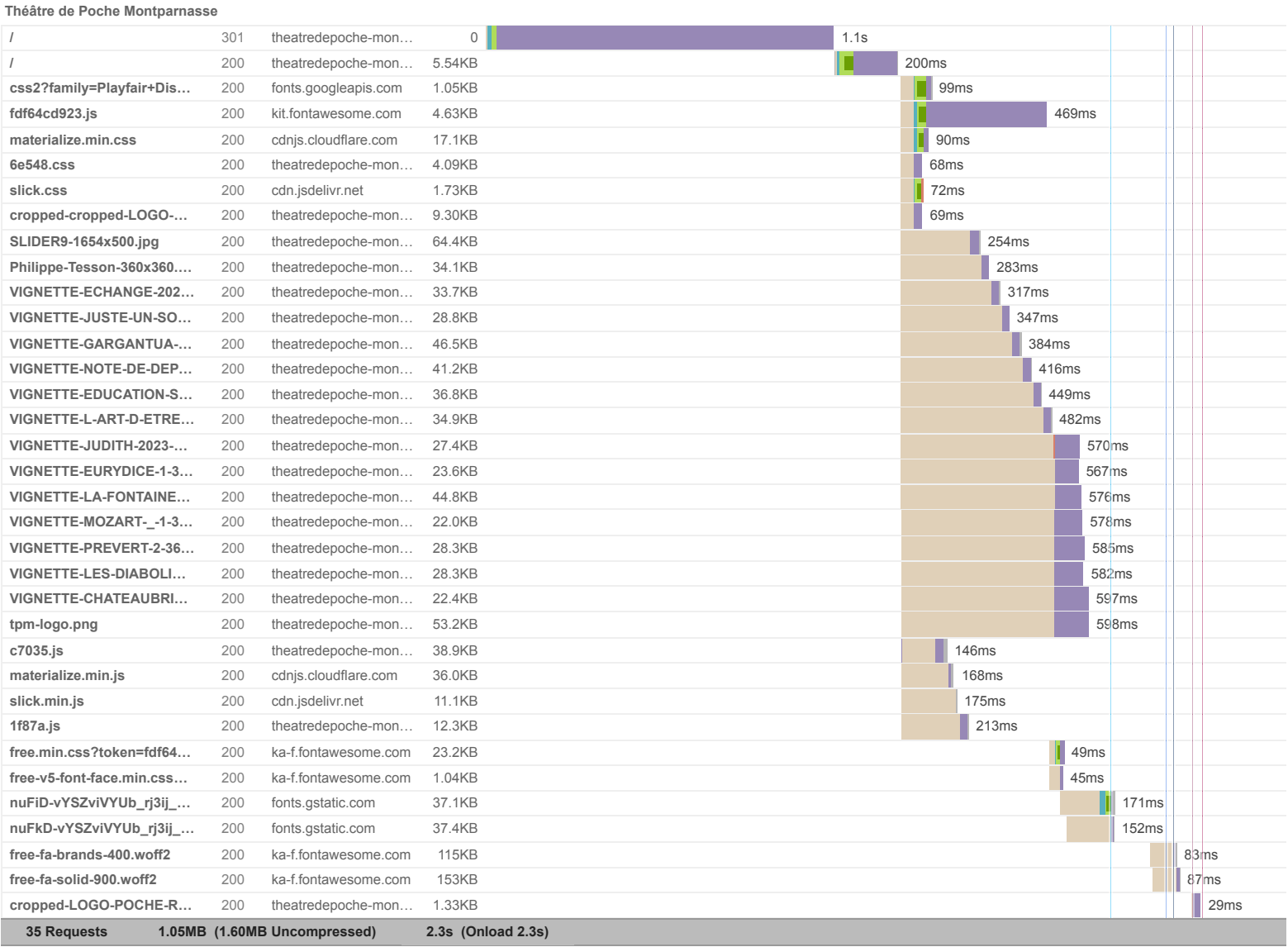
Page metrics

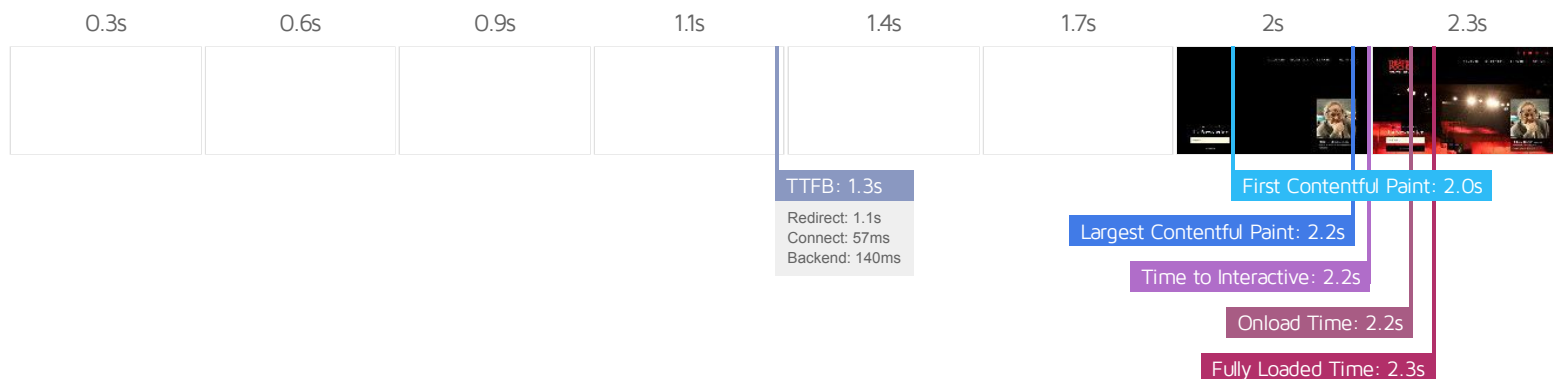


Page sizes and request counts



The waterfall chart displays the loading behaviour of your site in your selected browser. It can be used to discover simple issues such as 404's or more complex issues such as external resources blocking page rendering.





Performance Metrics

First Contentful Paint How quickly content like text or images are painted onto your page. A good user experience is 0.9s or less.	Much longer than recommended 2.0s	Time to Interactive How long it takes for your page to become fully interactive. A good user experience is 2.5s or less.	Good - Nothing to do here 2.2s
Speed Index How quickly the contents of your page are visibly populated. A good user experience is 1.3s or less.	Longer than recommended 2.0s	Total Blocking Time How much time is blocked by scripts during your page loading process. A good user experience is 150ms or less.	Good - Nothing to do here 6ms
Largest Contentful Paint How long it takes for the largest element of content (e.g. a hero image) to be painted on your page. A good user experience is 1.2s or less.	Longer than recommended 2.2s	Cumulative Layout Shift How much your page's layout shifts as it loads. A good user experience is a score of 0.1 or less.	Good - Nothing to do here 0

Browser Timings

Redirect	1.1s	Connect	57ms	Backend	140ms
TTFB	1.3s	First Paint	2.0s	DOM Int.	2.2s
DOM Loaded	2.2s	Onload	2.2s	Fully Loaded	2.3s

IMPACT	AUDIT	
Med-Low	Eliminate render-blocking resources <small>FCP LCP</small>	Potential savings of 276ms
Med-Low	Use a Content Delivery Network (CDN)	20 resources found
Low	Use passive listeners to improve scrolling performance	4 event listeners not passive
Low	Avoid chaining critical requests <small>FCP LCP</small>	12 chains found
Low	Avoid long main-thread tasks <small>TBT</small>	2 long tasks found
Low	Avoid an excessive DOM size <small>TBT</small>	335 elements
Low	Avoid enormous network payloads <small>LCP</small>	Total size was 1.06MB
Low	Properly size images	Potential savings of 74.2KB
Low	Avoid multiple page redirects <small>FCP LCP</small>	Potential savings of 1.1s
Low	Reduce unused CSS <small>FCP LCP</small>	Potential savings of 37.0KB
Low	Serve images in next-gen formats	Potential savings of 105KB
Low	Reduce initial server response time <small>FCP LCP</small>	Root document took 139ms
Low	Defer offscreen images	Potential savings of 49.7KB
Low	Minify JavaScript <small>FCP LCP</small>	Potential savings of 12.0KB
Low	Reduce unused JavaScript <small>LCP</small>	Potential savings of 29.0KB
N/A	Largest Contentful Paint element <small>LCP</small>	2,160 ms
N/A	Reduce JavaScript execution time <small>TBT</small>	93ms spent executing JavaScript
N/A	Avoid serving legacy JavaScript to modern browsers <small>TBT</small>	Potential savings of 8.50KB
N/A	Avoid large layout shifts <small>CLS</small>	5 elements found
N/A	Minimize main-thread work <small>TBT</small>	Main-thread busy for 600ms
N/A	Reduce the impact of third-party code <small>TBT</small>	Total size was 441KB
N/A	User Timing marks and measures	