



Performance Report for: <http://www.larchisens.com/>

Report generated: Sun, Dec 10, 2023 1:05 AM +0100 (via API)
 Test Server Location: London, UK
 Using: Chrome 117.0.0.0, Lighthouse 11.0.0
 Analysis options: Adblock Plus

B	Performance 77%	Structure 91%	L. Contentful Paint 2.2s	T. Blocking Time 7ms	C. Layout Shift 0
----------	---------------------------	-------------------------	------------------------------------	--------------------------------	-----------------------------

Top Issues

IMPACT AUDIT

Med	Serve static assets with an efficient cache policy	Potential savings of 1.14MB
Med-Low	Use a Content Delivery Network (CDN)	31 resources found
Med-Low	Avoid CSS @import FCP LCP	1 resource found
Low	Eliminate render-blocking resources FCP LCP	Potential savings of 174ms
Low	Avoid chaining critical requests FCP LCP	19 chains found

Page Details



Total Page Size - 1.58MB



Total Page Requests - 45



HTML JS CSS IMG Video Font Other

How does this affect me?

Today's web user expects a fast and seamless website experience. Delivering that fast experience can result in increased visits, conversions and overall happiness.

As if you didn't need more incentive, **Google has announced that they are using page speed in their ranking algorithm.**

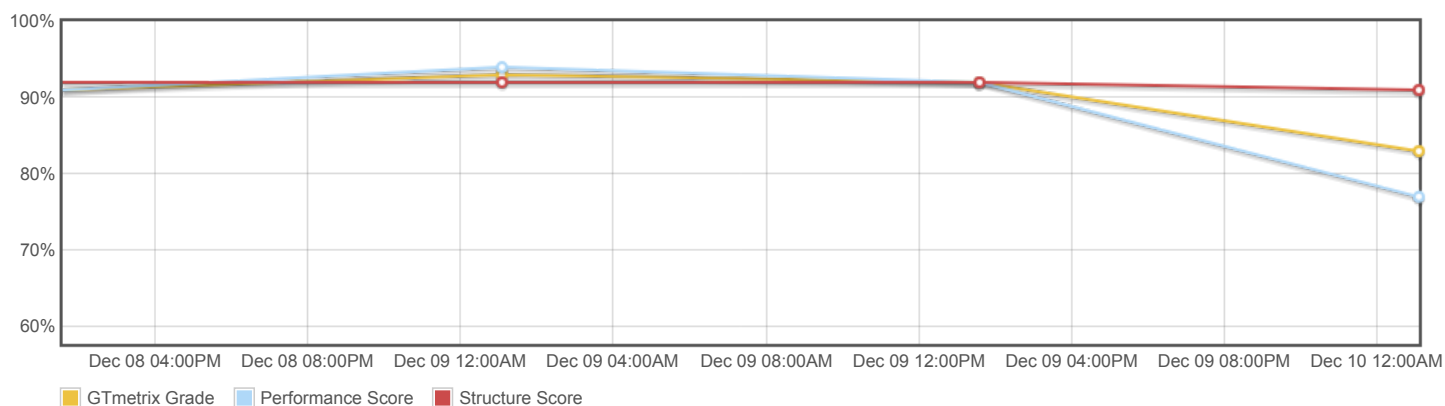
About GTmetrix

CARBON60
THE MANAGED CLOUD COMPANY

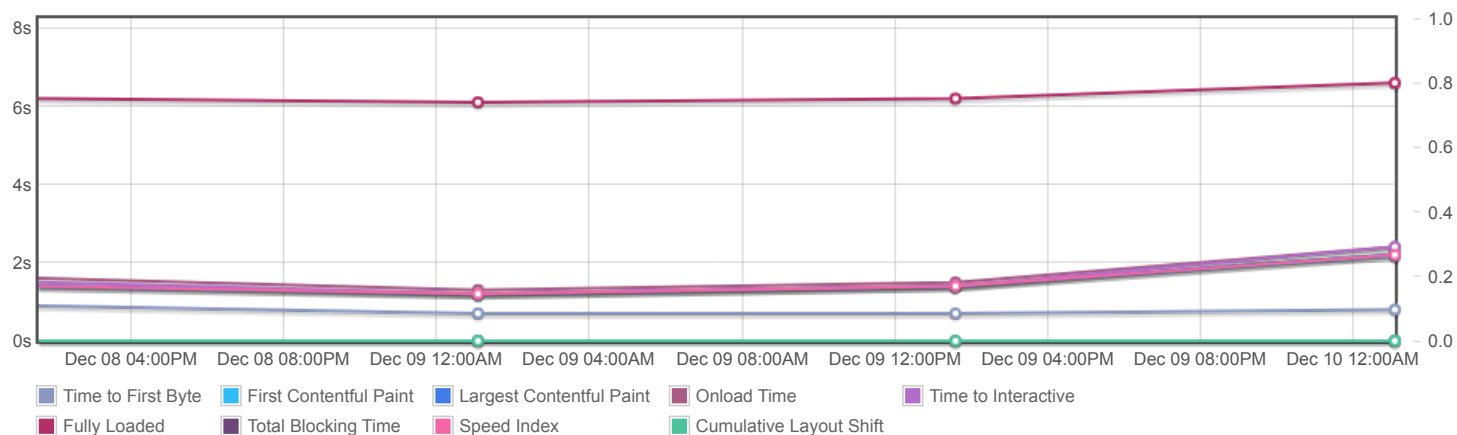
GTmetrix is developed by the good folks at **Carbon60**, a Canadian hosting company with over 27 years experience in web technology.

<https://carbon60.com/>

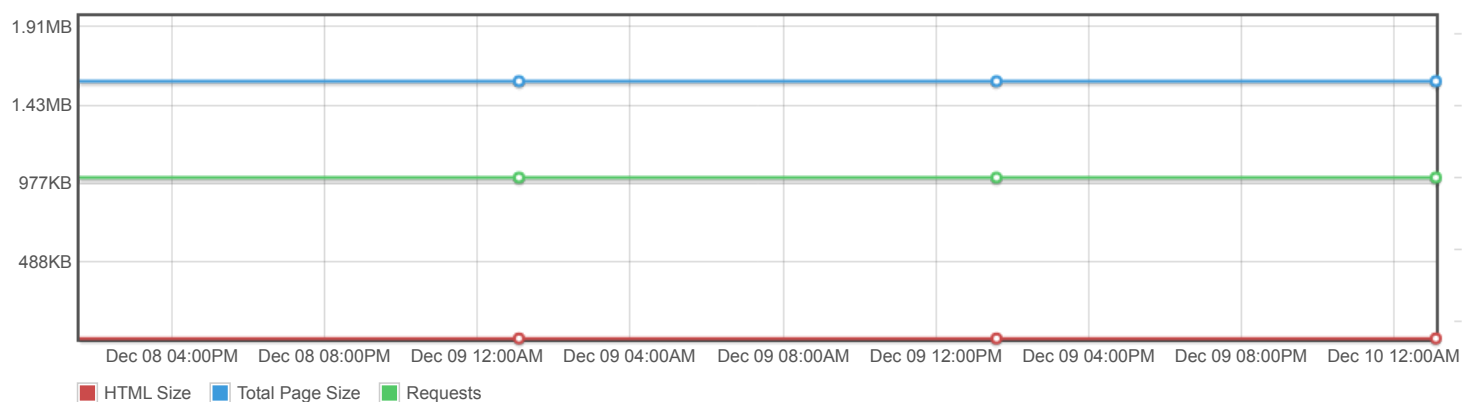
Page scores



Page metrics

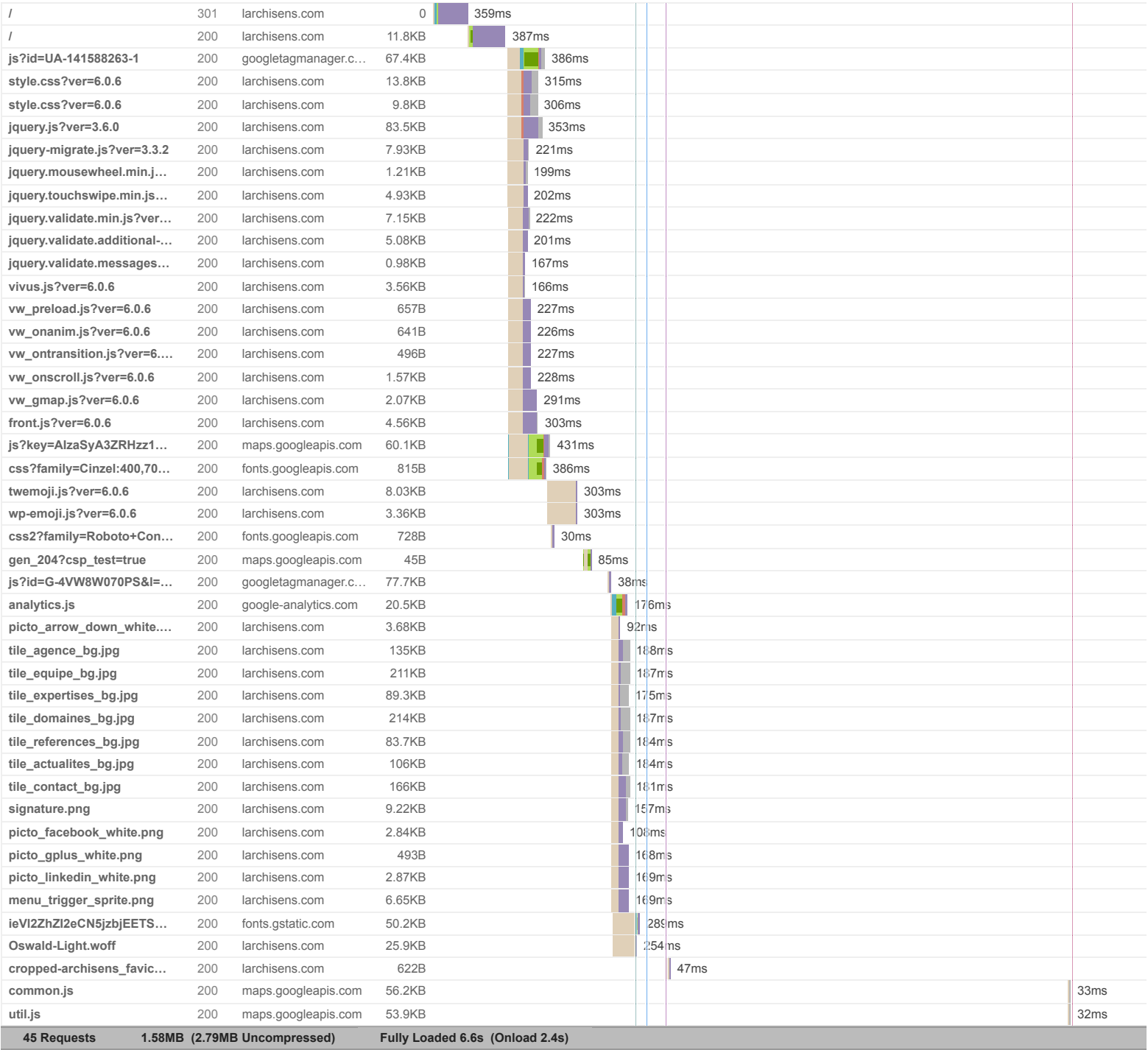


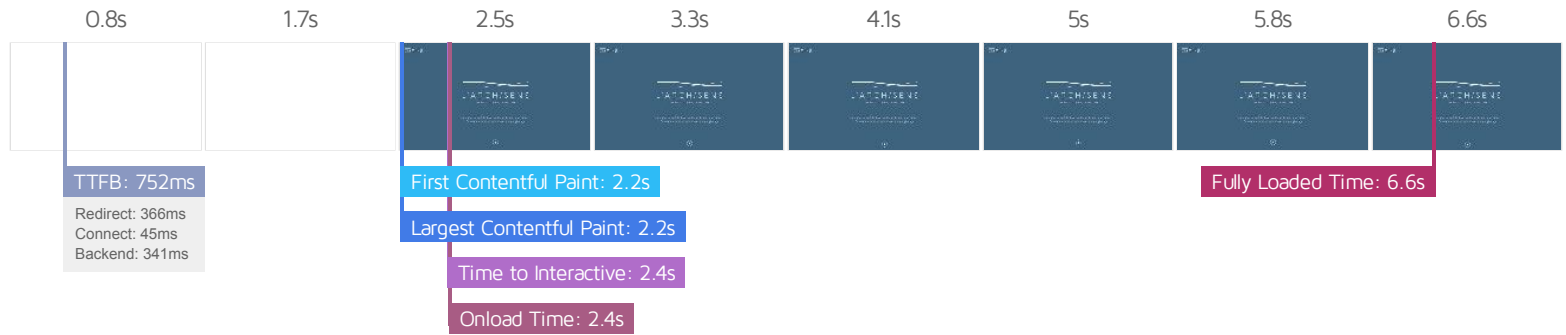
Page sizes and request counts



The waterfall chart displays the loading behaviour of your site in your selected browser. It can be used to discover simple issues such as 404's or more complex issues such as external resources blocking page rendering.

L'Archisens | Imaginer, conseiller, réaliser





Performance Metrics

First Contentful Paint How quickly content like text or images are painted onto your page. A good user experience is 0.9s or less.	Much longer than recommended 2.2s	Time to Interactive How long it takes for your page to become fully interactive. A good user experience is 2.5s or less.	Good - Nothing to do here 2.4s
Speed Index How quickly the contents of your page are visibly populated. A good user experience is 1.3s or less.	Longer than recommended 2.2s	Total Blocking Time How much time is blocked by scripts during your page loading process. A good user experience is 150ms or less.	Good - Nothing to do here 7ms
Largest Contentful Paint How long it takes for the largest element of content (e.g. a hero image) to be painted on your page. A good user experience is 1.2s or less.	Longer than recommended 2.2s	Cumulative Layout Shift How much your page's layout shifts as it loads. A good user experience is a score of 0.1 or less.	Good - Nothing to do here 0

Browser Timings

Redirect	366ms	Connect	45ms	Backend	341ms
TTFB	752ms	DOM Int.	2.1s	DOM Loaded	2.1s
First Paint	2.2s	Onload	2.4s	Fully Loaded	6.6s

IMPACT	AUDIT	
Med	Serve static assets with an efficient cache policy	Potential savings of 1.14MB
Med-Low	Use a Content Delivery Network (CDN)	31 resources found
Med-Low	Avoid CSS @import <small>FCP LCP</small>	1 resource found
Low	Eliminate render-blocking resources <small>FCP LCP</small>	Potential savings of 174ms
Low	Avoid chaining critical requests <small>FCP LCP</small>	19 chains found
Low	Avoid long main-thread tasks <small>TBT</small>	8 long tasks found
Low	Reduce JavaScript execution time <small>TBT</small>	654ms spent executing JavaScript
Low	Avoid enormous network payloads <small>LCP</small>	Total size was 1.59MB
Low	Avoid multiple page redirects <small>FCP LCP</small>	Potential savings of 363ms
Low	Efficiently encode images	Potential savings of 390KB
Low	Ensure text remains visible during webfont load <small>FCP LCP</small>	1 font found
Low	Reduce unused CSS <small>FCP LCP</small>	Potential savings of 14.0KB
Low	Serve images in next-gen formats	Potential savings of 745KB
Low	Reduce initial server response time <small>FCP LCP</small>	Root document took 340ms
Low	Defer offscreen images	Potential savings of 2.84KB
Low	Minify JavaScript <small>FCP LCP</small>	Potential savings of 63.2KB
Low	Reduce unused JavaScript <small>LCP</small>	Potential savings of 203KB
N/A	Avoid an excessive DOM size <small>TBT</small>	165 elements
N/A	Largest Contentful Paint element <small>LCP</small>	2,200 ms
N/A	Avoid serving legacy JavaScript to modern browsers <small>TBT</small>	Potential savings of 19.6KB
N/A	Avoid large layout shifts <small>CLS</small>	2 elements found
N/A	Minimize main-thread work <small>TBT</small>	Main-thread busy for 1.8s
N/A	Reduce the impact of third-party code <small>TBT</small>	Third-party code blocked the main thread for 34ms

