



Performance Report for: <http://www.millefeuillespaysage.com/>

Report generated: Sun, Dec 10, 2023 1:05 AM +0100 (via API)
 Test Server Location: London, UK
 Using: Chrome 117.0.0.0, Lighthouse 11.0.0
 Analysis options: Adblock Plus

A	Performance 95%	Structure 85%	L. Contentful Paint 1.3s	T. Blocking Time 57ms	C. Layout Shift 0.02
----------	---------------------------	-------------------------	------------------------------------	---------------------------------	--------------------------------

Top Issues

IMPACT	AUDIT	
Med-High	Avoid enormous network payloads	Total size was 4.09MB
Med	Use explicit width and height on image elements	12 images found
Med-Low	Serve static assets with an efficient cache policy	Potential savings of 274KB
Low	Use passive listeners to improve scrolling performance	1 event listener not passive
Low	Eliminate render-blocking resources	Potential savings of 28ms

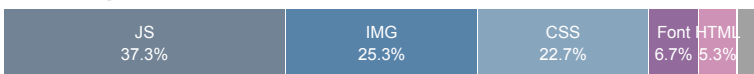
Page Details



Total Page Size - 4.07MB



Total Page Requests - 75



HTML
 JS
 CSS
 IMG
 Video
 Font
 Other

How does this affect me?

Today's web user expects a fast and seamless website experience. Delivering that fast experience can result in increased visits, conversions and overall happiness.

As if you didn't need more incentive, **Google has announced that they are using page speed in their ranking algorithm.**

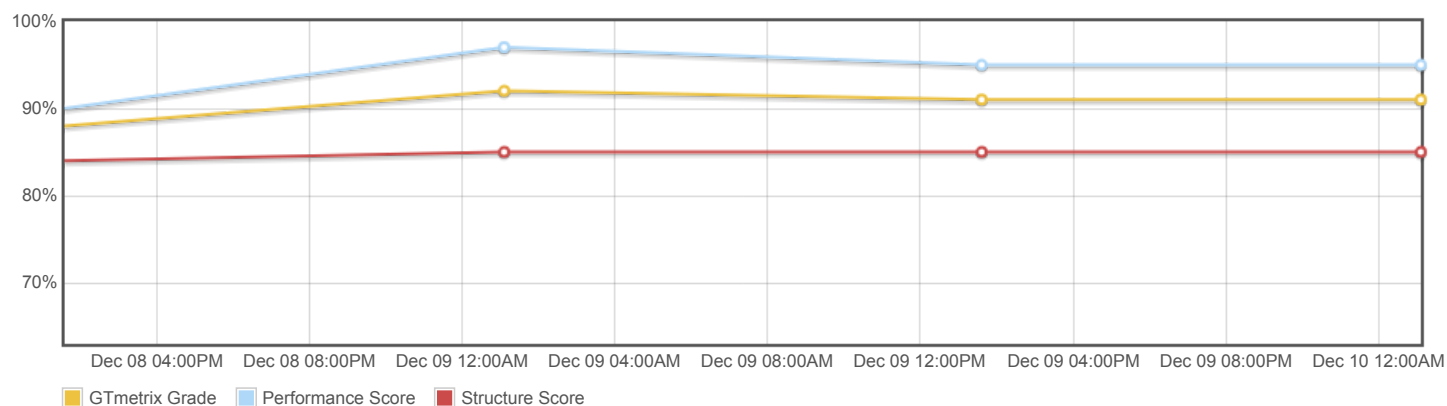
About GTmetrix

CARBON60
THE MANAGED CLOUD COMPANY

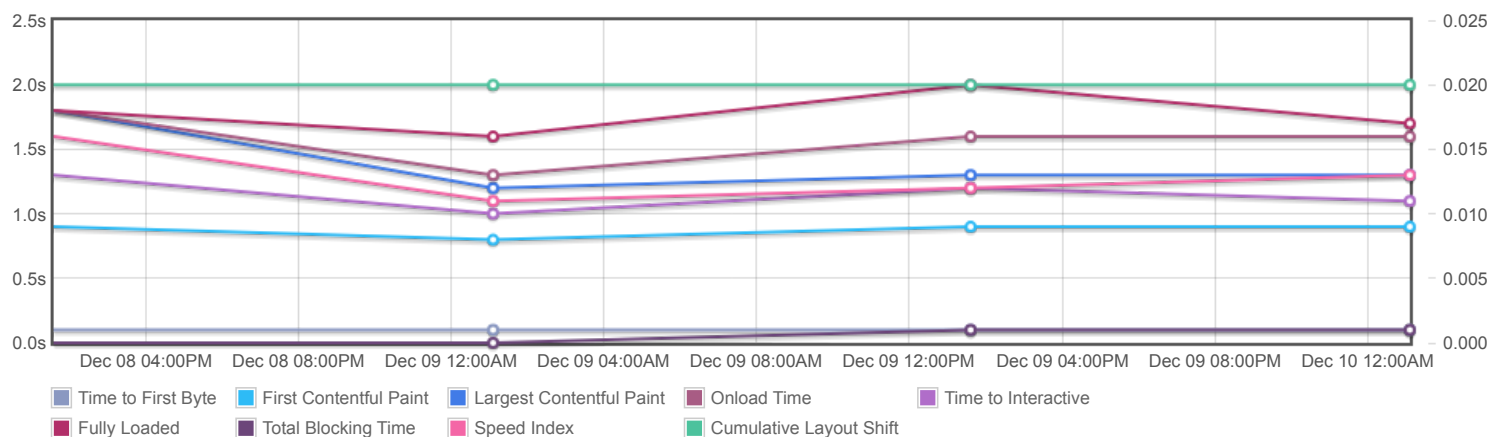
GTmetrix is developed by the good folks at **Carbon60**, a Canadian hosting company with over 27 years experience in web technology.

<https://carbon60.com/>

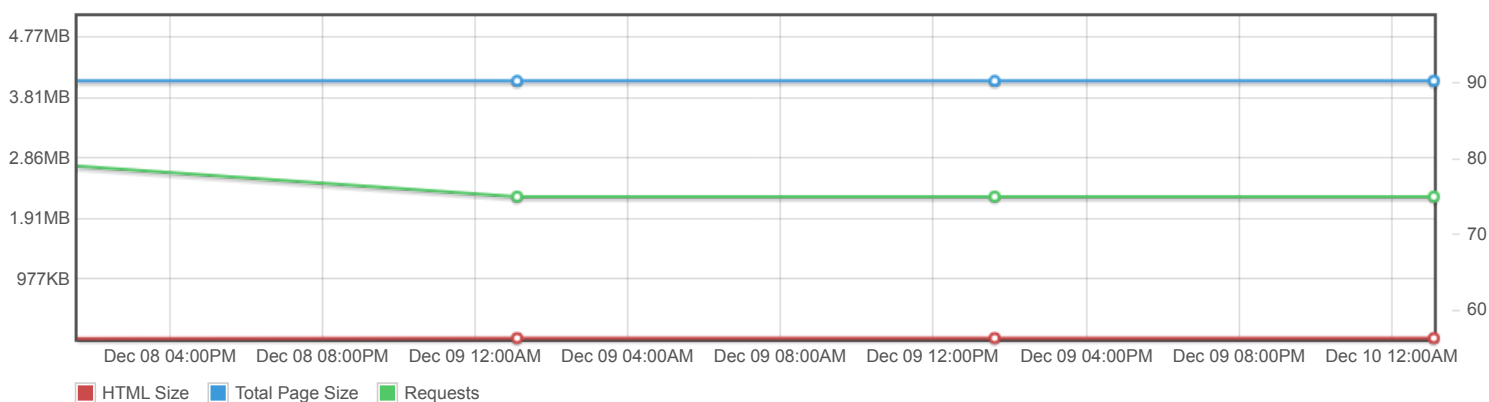
Page scores



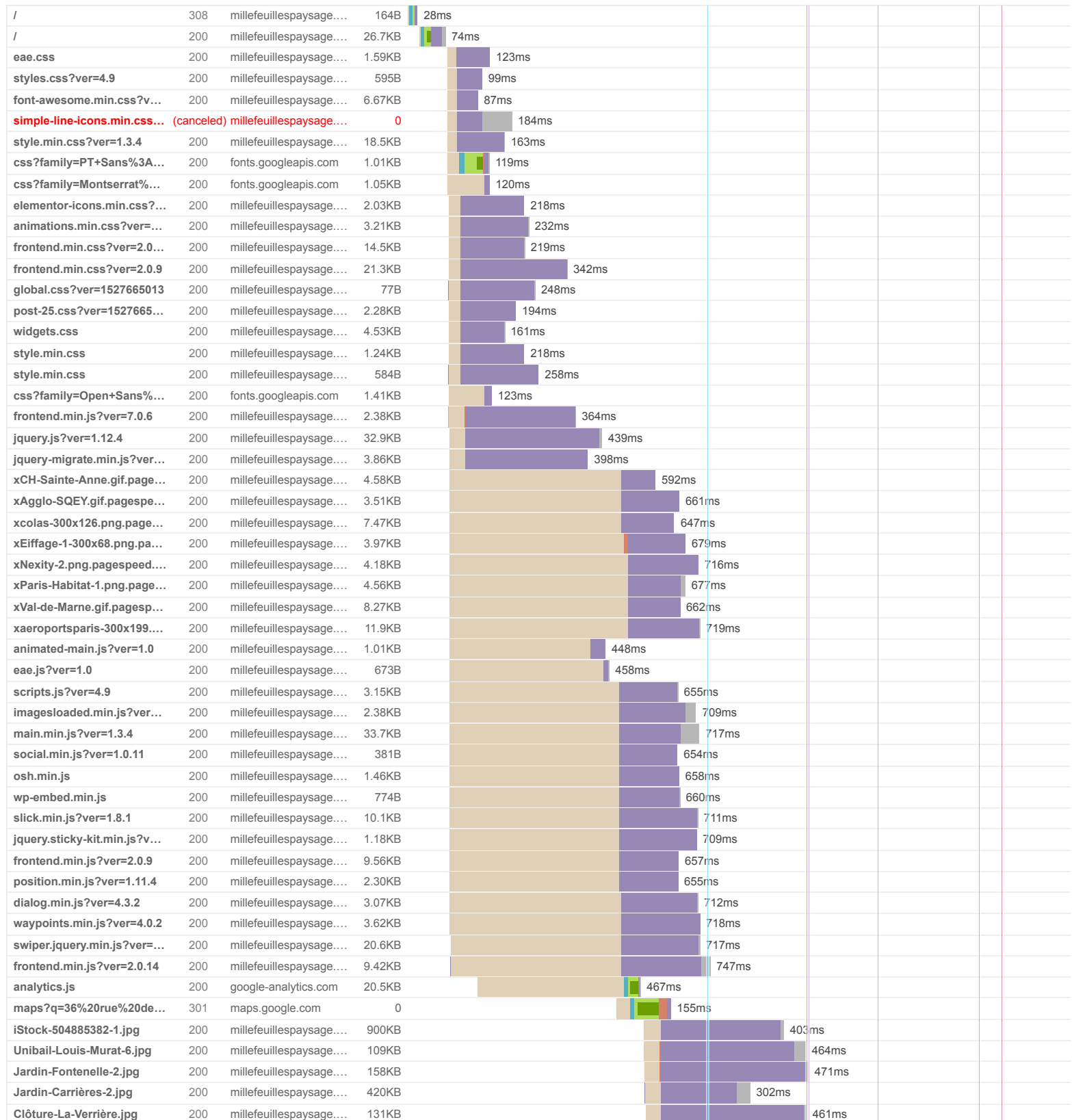
Page metrics



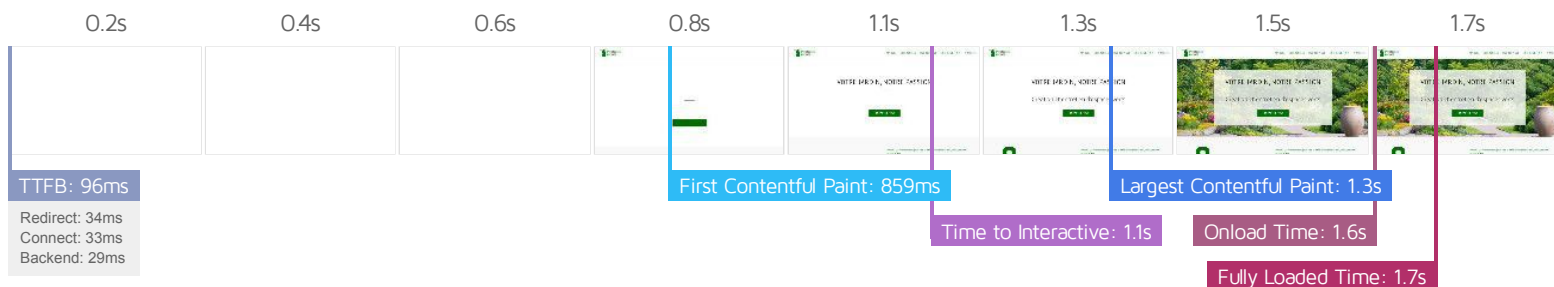
Page sizes and request counts



Mille Feuilles Paysage - Création et entretien d'espaces vert



[illegible]



Performance Metrics

First Contentful Paint How quickly content like text or images are painted onto your page. A good user experience is 0.9s or less.	Good - Nothing to do here 858ms	Time to Interactive How long it takes for your page to become fully interactive. A good user experience is 2.5s or less.	Good - Nothing to do here 1.1s
Speed Index How quickly the contents of your page are visibly populated. A good user experience is 1.3s or less.	Good - Nothing to do here 1.3s	Total Blocking Time How much time is blocked by scripts during your page loading process. A good user experience is 150ms or less.	Good - Nothing to do here 57ms
Largest Contentful Paint How long it takes for the largest element of content (e.g. a hero image) to be painted on your page. A good user experience is 1.2s or less.	OK, but consider improvement 1.3s	Cumulative Layout Shift How much your page's layout shifts as it loads. A good user experience is a score of 0.1 or less.	Good - Nothing to do here 0.02

Browser Timings

Redirect	34ms	Connect	33ms	Backend	29ms
TTFB	96ms	First Paint	859ms	DOM Int.	1.0s
DOM Loaded	1.1s	Onload	1.6s	Fully Loaded	1.7s

IMPACT	AUDIT	
Med-High	Avoid enormous network payloads <small>LCP</small>	Total size was 4.09MB
Med	Use explicit width and height on image elements <small>CLS</small>	12 images found
Med-Low	Serve static assets with an efficient cache policy	Potential savings of 274KB
Low	Use passive listeners to improve scrolling performance	1 event listener not passive
Low	Eliminate render-blocking resources <small>FCP LCP</small>	Potential savings of 28ms
Low	Ensure text remains visible during webfont load <small>FCP LCP</small>	5 fonts found
Low	Avoid an excessive DOM size <small>TBT</small>	430 elements
Low	Properly size images	Potential savings of 14.0KB
Low	Avoid multiple page redirects <small>FCP LCP</small>	Potential savings of 32ms
Low	Efficiently encode images	Potential savings of 36.2KB
Low	Avoid long main-thread tasks <small>TBT</small>	3 long tasks found
Low	Reduce JavaScript execution time <small>TBT</small>	229ms spent executing JavaScript
Low	Reduce unused CSS <small>FCP LCP</small>	Potential savings of 52.1KB
Low	Serve images in next-gen formats	Potential savings of 1.45MB
Low	Minify JavaScript <small>FCP LCP</small>	Potential savings of 12.0KB
Low	Avoid chaining critical requests <small>FCP LCP</small>	38 chains found
Low	Reduce unused JavaScript <small>LCP</small>	Potential savings of 45.6KB
N/A	Largest Contentful Paint element <small>LCP</small>	1,340 ms
N/A	Reduce initial server response time <small>FCP LCP</small>	Root document took 28ms
N/A	Avoid serving legacy JavaScript to modern browsers <small>TBT</small>	Potential savings of 8.46KB
N/A	Avoid large layout shifts <small>CLS</small>	5 elements found
N/A	Minimize main-thread work <small>TBT</small>	Main-thread busy for 936ms
N/A	Reduce the impact of third-party code <small>TBT</small>	Total size was 563KB

