

Performance Report for: <http://www.sergeantpaper.com/>

Report generated: Sun, Dec 10, 2023 1:06 AM +0100 (via API)
 Test Server Location: London, UK
 Using: Chrome 117.0.0.0, Lighthouse 11.0.0
 Analysis options: Adblock Plus

D	Performance 51%	Structure 92%	L. Contentful Paint 2.3s	T. Blocking Time 1.2s	C. Layout Shift 0.03
----------	---------------------------	-------------------------	------------------------------------	---------------------------------	--------------------------------

Top Issues

IMPACT	AUDIT	
Med-High	Avoid an excessive DOM size TBT	3,135 elements
Med	Use explicit width and height on image elements CLS	7 images found
Low	Avoid long main-thread tasks TBT	9 long tasks found
Low	Avoid enormous network payloads LCP	Total size was 2.42MB
Low	Serve static assets with an efficient cache policy	Potential savings of 39.5KB

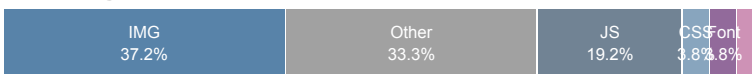
Page Details



Total Page Size - 2.41MB



Total Page Requests - 78



HTML JS CSS IMG Video Font Other

How does this affect me?

Today's web user expects a fast and seamless website experience. Delivering that fast experience can result in increased visits, conversions and overall happiness.

As if you didn't need more incentive, **Google has announced that they are using page speed in their ranking algorithm.**

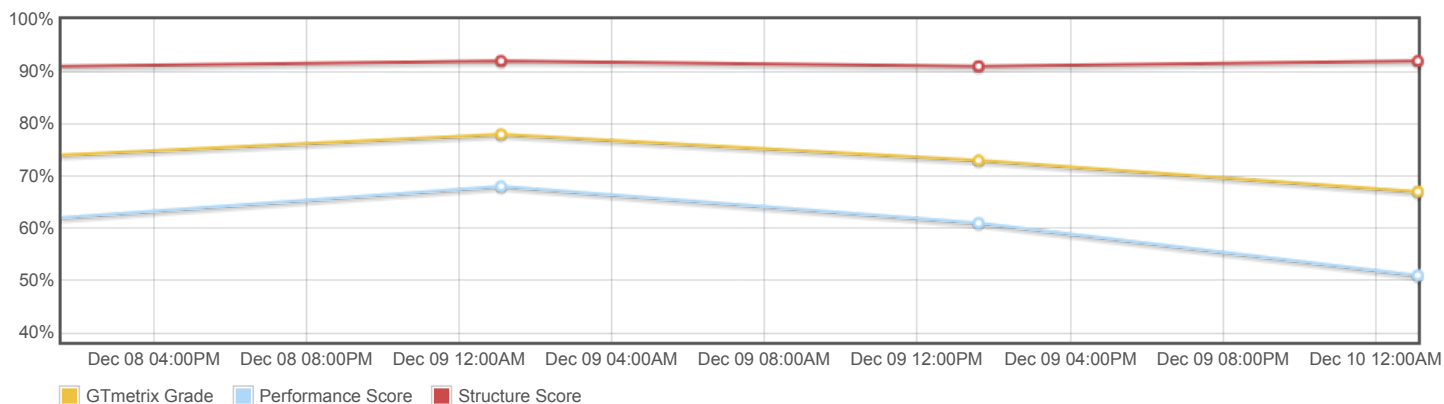
About GTmetrix

CARBON60
THE MANAGED CLOUD COMPANY

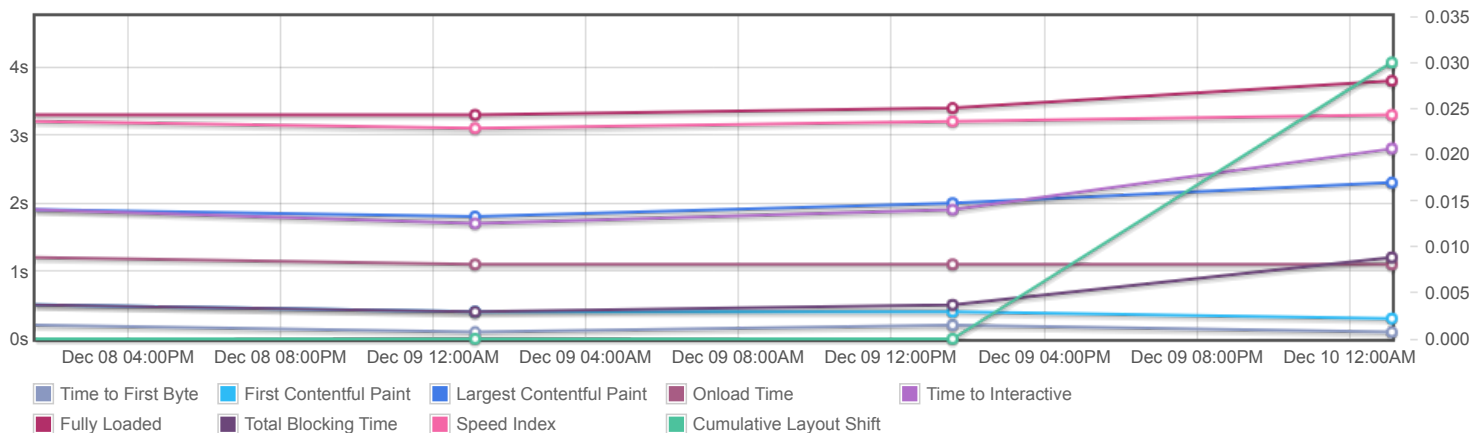
GTmetrix is developed by the good folks at **Carbon60**, a Canadian hosting company with over 27 years experience in web technology.

<https://carbon60.com/>

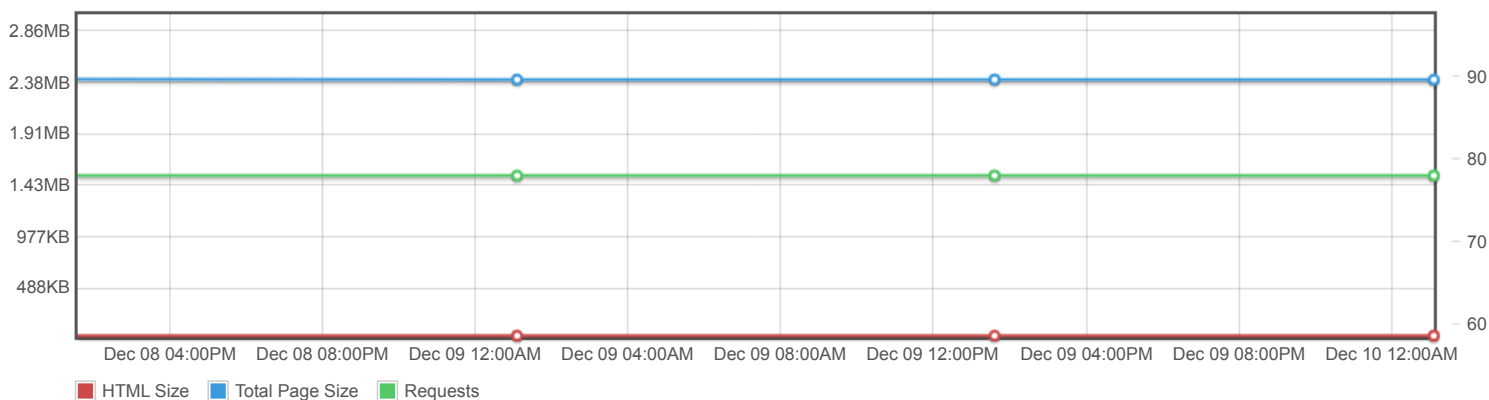
Page scores



Page metrics

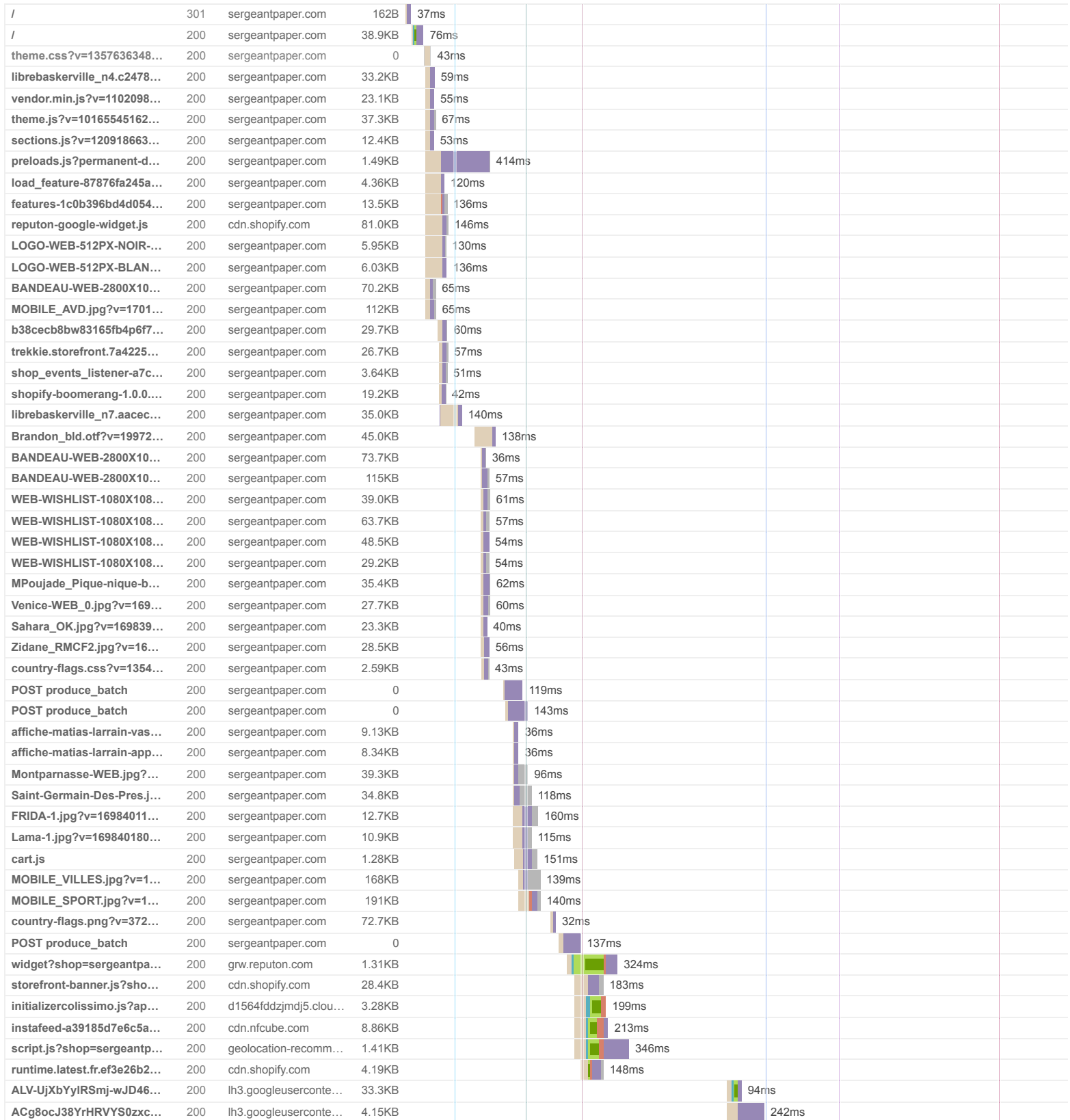


Page sizes and request counts

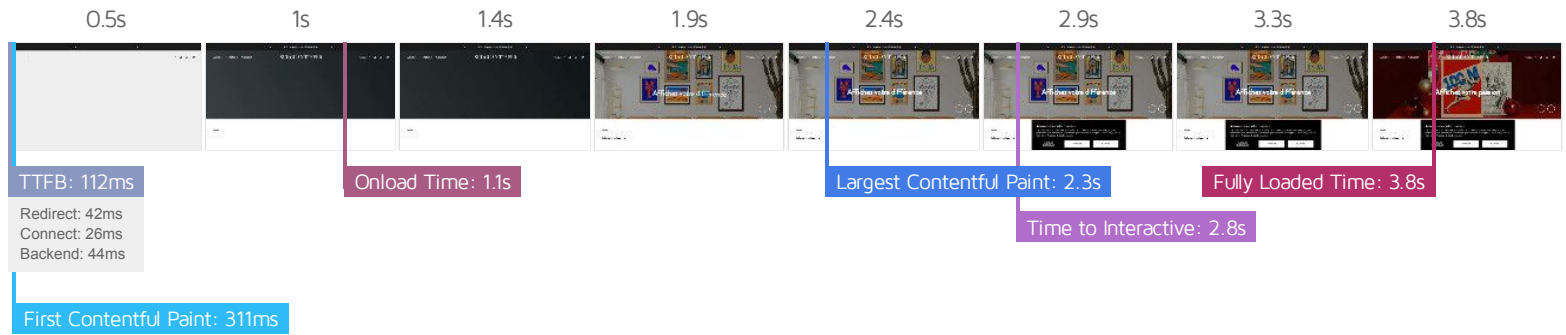


The waterfall chart displays the loading behaviour of your site in your selected browser. It can be used to discover simple issues such as 404's or more complex issues such as external resources blocking page rendering.

Sergeant Paper | Affiches Design & Art Print



ALV-UjWzO3ttyJ8DX4sx8...	200	lh3.googleusercontent...	36.6KB						92ms		
POST produce_batch	200	sergeantpaper.com	0						143ms		
customization?shopify_d...	200	privacy-banner.shopi...	2.49KB						254ms		
favicon.ico	404	sergeantpaper.com	0						68ms		
512.latest.fr.25dd5d8abdc...	200	cdn.shopify.com	78.8KB						92ms		
instafeed-9.2.1.css	200	instafeed.nfcube.com	3.88KB						55ms		
v4?limit=12&account=ser...	200	instafeed.nfcube.com	3.51KB							1.3s	
loader.gif	200	instafeed.nfcube.com	596B						50ms		
441.latest.fr.04eff29e3df2...	200	cdn.shopify.com	77.9KB						39ms		
598.latest.fr.0da558f5da8a...	200	cdn.shopify.com	19.6KB						61ms		
POST produce	(canceled)	monorail-edge.shopif...	0							257ms	
OPTIONS produce	200	monorail-edge.shopif...	0							123ms	
app.latest.fr.5b887fd30fc1...	200	cdn.shopify.com	207KB							80ms	
731.latest.fr.13d4de92b88...	200	cdn.shopify.com	959B							36ms	
958.latest.fr.ac605d35e4e...	200	cdn.shopify.com	8.78KB							38ms	
844.latest.fr.7fcd45ae446a...	200	cdn.shopify.com	1.42KB							39ms	
Redesign.latest.fr.a2030a...	200	cdn.shopify.com	257KB							84ms	
512.latest.fr.5b26a569a7e...	200	cdn.shopify.com	24.2KB							32ms	
app.latest.fr.e73cab4b1bb...	200	cdn.shopify.com	1.56KB							32ms	
958.latest.fr.5f60c0e91d9d...	200	cdn.shopify.com	9.09KB							43ms	
661.latest.fr.91532050255...	200	cdn.shopify.com	7.79KB							37ms	
LOGO-WEB-512PX-NOIR-...	200	cdn.shopify.com	6.75KB							25ms	
placeholder.gif	200	instafeed.nfcube.com	38B								52ms
instagram-icon-v2.svg	200	instafeed.nfcube.com	608B								40ms
POST produce	200	sergeantpaper.com	0								130ms
78 Requests 2.41MB (3.65MB Uncompressed) Fully Loaded 3.8s (Onload 1.1s)											



Performance Metrics

First Contentful Paint How quickly content like text or images are painted onto your page. A good user experience is 0.9s or less.	Good - Nothing to do here 310ms	Time to Interactive How long it takes for your page to become fully interactive. A good user experience is 2.5s or less.	OK, but consider improvement 2.8s
Speed Index How quickly the contents of your page are visibly populated. A good user experience is 1.3s or less.	Much longer than recommended 3.3s	Total Blocking Time How much time is blocked by scripts during your page loading process. A good user experience is 150ms or less.	Much longer than recommended 1.2s
Largest Contentful Paint How long it takes for the largest element of content (e.g. a hero image) to be painted on your page. A good user experience is 1.2s or less.	Longer than recommended 2.3s	Cumulative Layout Shift How much your page's layout shifts as it loads. A good user experience is a score of 0.1 or less.	Good - Nothing to do here 0.03

Browser Timings

Redirect	42ms	Connect	26ms	Backend	44ms
TTFB	112ms	First Paint	311ms	DOM Int.	658ms
DOM Loaded	762ms	Onload	1.1s	Fully Loaded	3.8s

IMPACT	AUDIT	
Med-High	Avoid an excessive DOM size TBT	3,135 elements
Med	Use explicit width and height on image elements CLS	7 images found
Low	Avoid long main-thread tasks TBT	9 long tasks found
Low	Avoid enormous network payloads LCP	Total size was 2.42MB
Low	Serve static assets with an efficient cache policy	Potential savings of 39.5KB
Low	Reduce JavaScript execution time TBT	572ms spent executing JavaScript
Low	Properly size images	Potential savings of 110KB
Low	Avoid multiple page redirects FCP LCP	Potential savings of 40ms
Low	Ensure text remains visible during webfont load FCP LCP	1 font found
Low	Reduce unused CSS FCP LCP	Potential savings of 15.0KB
Low	Serve images in next-gen formats	Potential savings of 70.2KB
Low	Avoid non-composited animations CLS	3 animated elements found
Low	Minify JavaScript FCP LCP	Potential savings of 21.9KB
Low	Avoid chaining critical requests FCP LCP	5 chains found
Low	Reduce unused JavaScript LCP	Potential savings of 49.5KB
N/A	Largest Contentful Paint element LCP	2,310 ms
N/A	Reduce initial server response time FCP LCP	Root document took 9ms
N/A	Avoid serving legacy JavaScript to modern browsers TBT	Potential savings of 8.54KB
N/A	Avoid large layout shifts CLS	3 elements found
N/A	Minimize main-thread work TBT	Main-thread busy for 2.9s
N/A	User Timing marks and measures	3 user timings
N/A	Reduce the impact of third-party code TBT	Third-party code blocked the main thread for 427ms
N/A	Eliminate render-blocking resources FCP LCP	