



## Performance Report for: <http://www.voyages-gilbert-james.com/>

Report generated: Sun, Dec 10, 2023 1:06 AM +0100 (via API)  
 Test Server Location: London, UK  
 Using: Chrome 117.0.0.0, Lighthouse 11.0.0  
 Analysis options: Adblock Plus

<b>A</b>	Performance <b>87%</b>	Structure <b>94%</b>	L. Contentful Paint <b>991ms</b>	T. Blocking Time <b>34ms</b>	C. Layout Shift <b>0.22</b>
----------	---------------------------	-------------------------	-------------------------------------	---------------------------------	--------------------------------

### Top Issues

IMPACT	AUDIT	
Med-Low	Use a Content Delivery Network (CDN)	21 resources found
Med-Low	Avoid large layout shifts <small>CLS</small>	5 elements found
Low	Avoid enormous network payloads <small>LCP</small>	Total size was 2.65MB
Low	Avoid multiple page redirects <small>FCP</small> <small>LCP</small>	Potential savings of 119ms
Low	Serve static assets with an efficient cache policy	Potential savings of 15.6KB

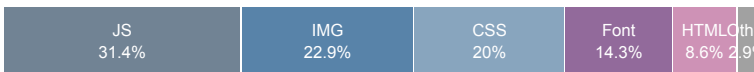
### Page Details



Total Page Size - 2.65MB



Total Page Requests - 35



HTML
JS
CSS
IMG
Video
Font
Other

### How does this affect me?

Today's web user expects a fast and seamless website experience. Delivering that fast experience can result in increased visits, conversions and overall happiness.

As if you didn't need more incentive, **Google has announced that they are using page speed in their ranking algorithm.**

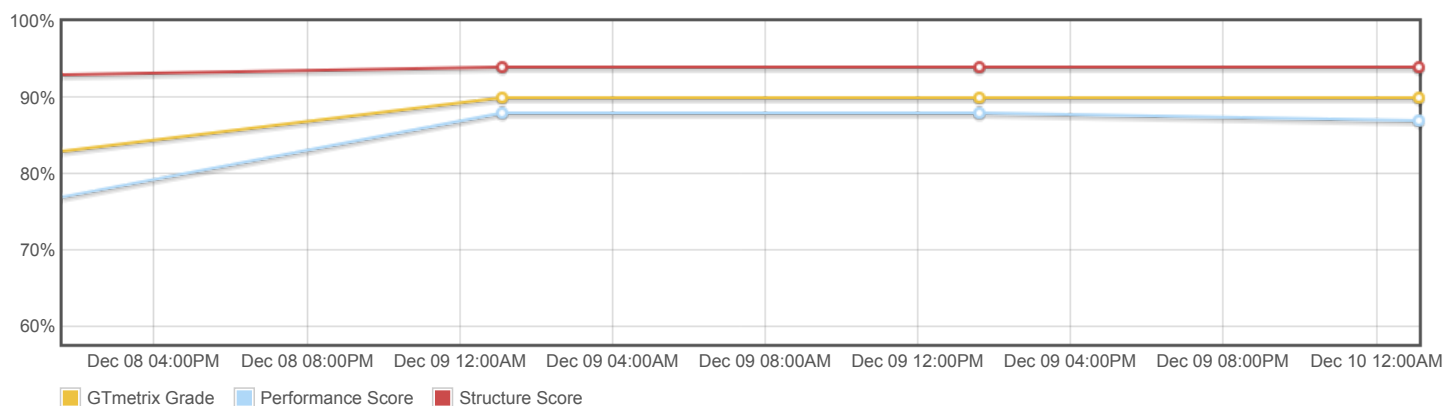
### About GTmetrix

**CARBON60**  
THE MANAGED CLOUD COMPANY

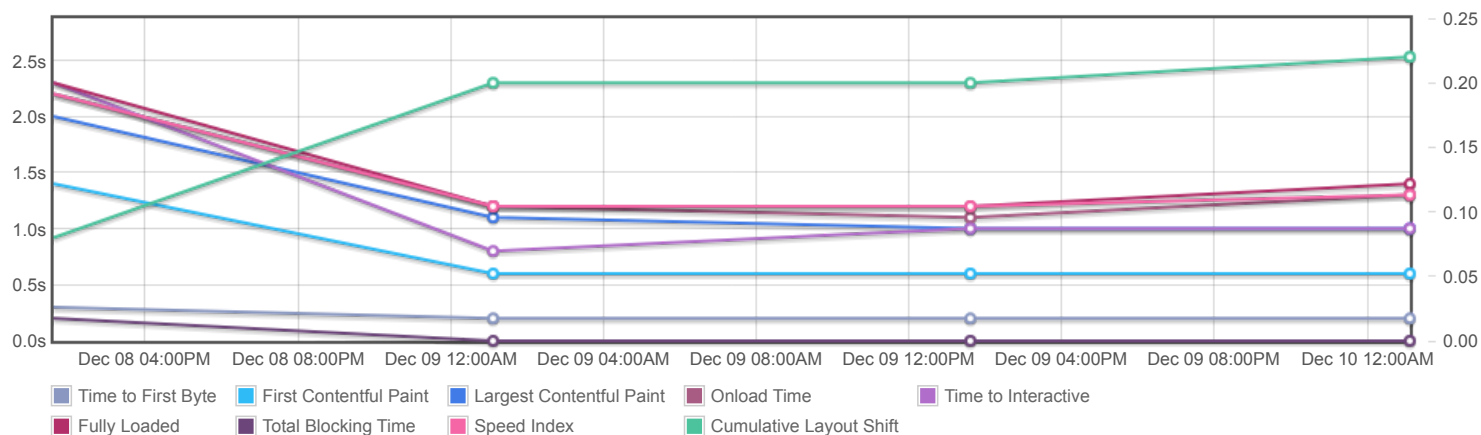
GTmetrix is developed by the good folks at **Carbon60**, a Canadian hosting company with over 27 years experience in web technology.

<https://carbon60.com/>

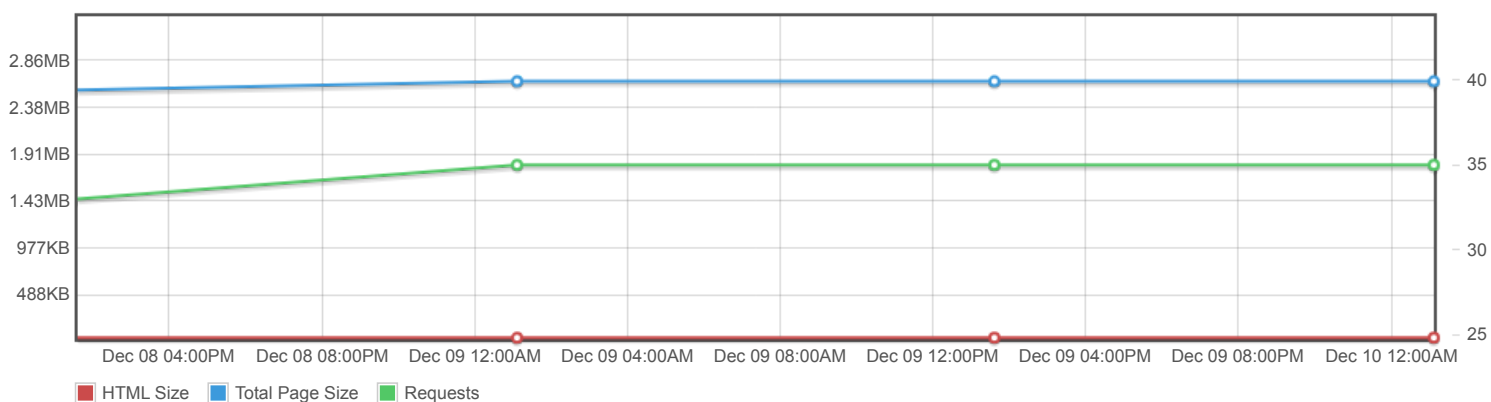
## Page scores



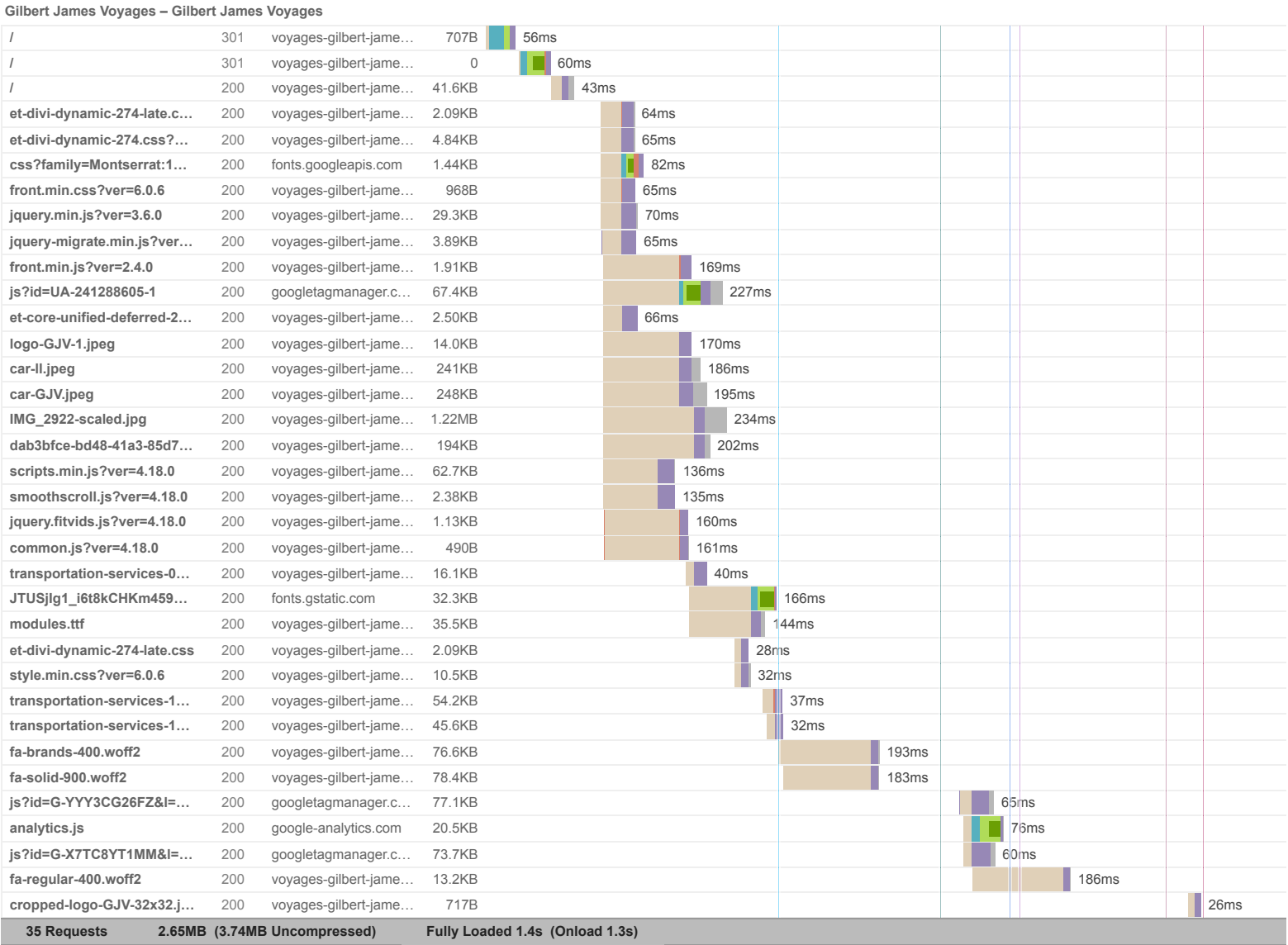
## Page metrics

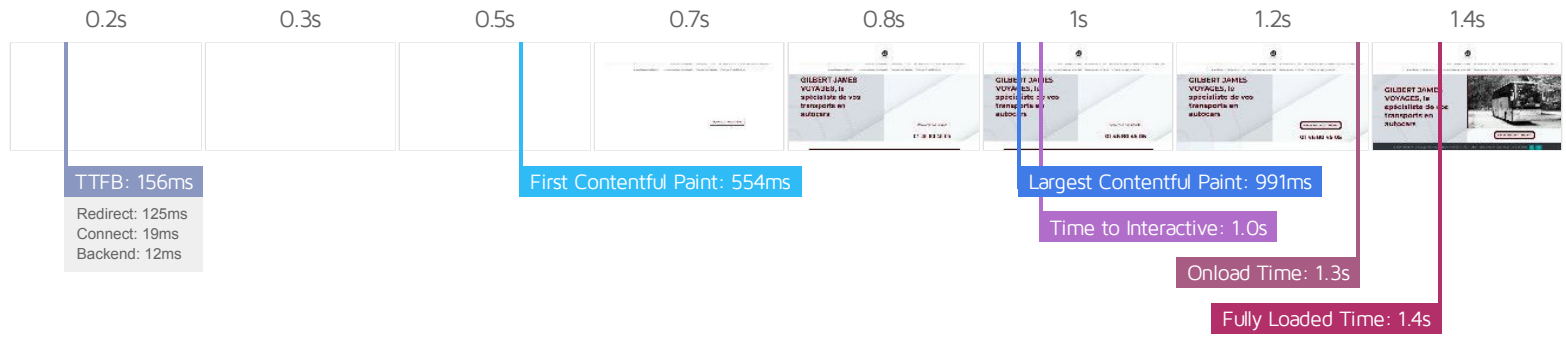


## Page sizes and request counts



The waterfall chart displays the loading behaviour of your site in your selected browser. It can be used to discover simple issues such as 404's or more complex issues such as external resources blocking page rendering.





## Performance Metrics

<b>First Contentful Paint</b> How quickly content like text or images are painted onto your page. A good user experience is 0.9s or less.	Good - Nothing to do here <b>554ms</b>	<b>Time to Interactive</b> How long it takes for your page to become fully interactive. A good user experience is 2.5s or less.	Good - Nothing to do here <b>1.0s</b>
<b>Speed Index</b> How quickly the contents of your page are visibly populated. A good user experience is 1.3s or less.	Good - Nothing to do here <b>1.3s</b>	<b>Total Blocking Time</b> How much time is blocked by scripts during your page loading process. A good user experience is 150ms or less.	Good - Nothing to do here <b>34ms</b>
<b>Largest Contentful Paint</b> How long it takes for the largest element of content (e.g. a hero image) to be painted on your page. A good user experience is 1.2s or less.	Good - Nothing to do here <b>991ms</b>	<b>Cumulative Layout Shift</b> How much your page's layout shifts as it loads. A good user experience is a score of 0.1 or less.	More than recommended <b>0.22</b>

## Browser Timings

Redirect	125ms	Connect	19ms	Backend	12ms
TTFB	156ms	First Paint	554ms	DOM Int.	843ms
DOM Loaded	861ms	Onload	1.3s	Fully Loaded	1.4s

IMPACT	AUDIT	
Med-Low	<b>Use a Content Delivery Network (CDN)</b>	21 resources found
Med-Low	<b>Avoid large layout shifts</b> <small>CLS</small>	5 elements found
Low	<b>Avoid enormous network payloads</b> <small>LCP</small>	Total size was 2.65MB
Low	<b>Avoid multiple page redirects</b> <small>FCP</small> <small>LCP</small>	Potential savings of 119ms
Low	<b>Serve static assets with an efficient cache policy</b>	Potential savings of 15.6KB
Low	<b>Eliminate render-blocking resources</b> <small>FCP</small> <small>LCP</small>	Potential savings of 33ms
Low	<b>Avoid an excessive DOM size</b> <small>TBT</small>	385 elements
Low	<b>Properly size images</b>	Potential savings of 1.60MB
Low	<b>Efficiently encode images</b>	Potential savings of 190KB
Low	<b>Avoid long main-thread tasks</b> <small>TBT</small>	3 long tasks found
Low	<b>Reduce JavaScript execution time</b> <small>TBT</small>	282ms spent executing JavaScript
Low	<b>Reduce unused CSS</b> <small>FCP</small> <small>LCP</small>	Potential savings of 28.6KB
Low	<b>Serve images in next-gen formats</b>	Potential savings of 859KB
Low	<b>Defer offscreen images</b>	Potential savings of 1.41MB
Low	<b>Avoid non-composited animations</b> <small>CLS</small>	8 animated elements found
Low	<b>Minify JavaScript</b> <small>FCP</small> <small>LCP</small>	Potential savings of 12.0KB
Low	<b>Avoid chaining critical requests</b> <small>FCP</small> <small>LCP</small>	13 chains found
Low	<b>Reduce unused JavaScript</b> <small>LCP</small>	Potential savings of 145KB
N/A	<b>Largest Contentful Paint element</b> <small>LCP</small>	990 ms
N/A	<b>Reduce initial server response time</b> <small>FCP</small> <small>LCP</small>	Root document took 11ms
N/A	<b>Avoid serving legacy JavaScript to modern browsers</b> <small>TBT</small>	Potential savings of 8.46KB
N/A	<b>Minimize main-thread work</b> <small>TBT</small>	Main-thread busy for 1.2s
N/A	<b>Reduce the impact of third-party code</b> <small>TBT</small>	Total size was 274KB

