



Performance Report for: <http://www.robindesbois.org/>

Report generated: Sun, Dec 10, 2023 1:07 AM +0100 (via API)
 Test Server Location: London, UK
 Using: Chrome 117.0.0.0, Lighthouse 11.0.0
 Analysis options: Adblock Plus

	Performance 75%	Structure 75%	L. Contentful Paint 2.6s	T. Blocking Time 1ms	C. Layout Shift 0
--	---------------------------	-------------------------	------------------------------------	--------------------------------	-----------------------------

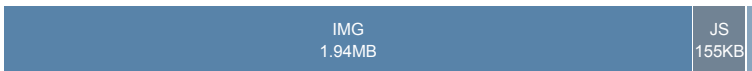
Top Issues

IMPACT	AUDIT	
Med-High	Combine images using CSS sprites	16 images found
Med	Use explicit width and height on image elements	7 images found
Med	Serve static assets with an efficient cache policy	Potential savings of 1.90MB
Med	Use a Content Delivery Network (CDN)	82 resources found
Med-Low	Avoid multiple page redirects	Potential savings of 662ms

Page Details



Total Page Size - 2.13MB



Total Page Requests - 95



HTML JS CSS IMG Video Font Other

How does this affect me?

Today's web user expects a fast and seamless website experience. Delivering that fast experience can result in increased visits, conversions and overall happiness.

As if you didn't need more incentive, **Google has announced that they are using page speed in their ranking algorithm.**

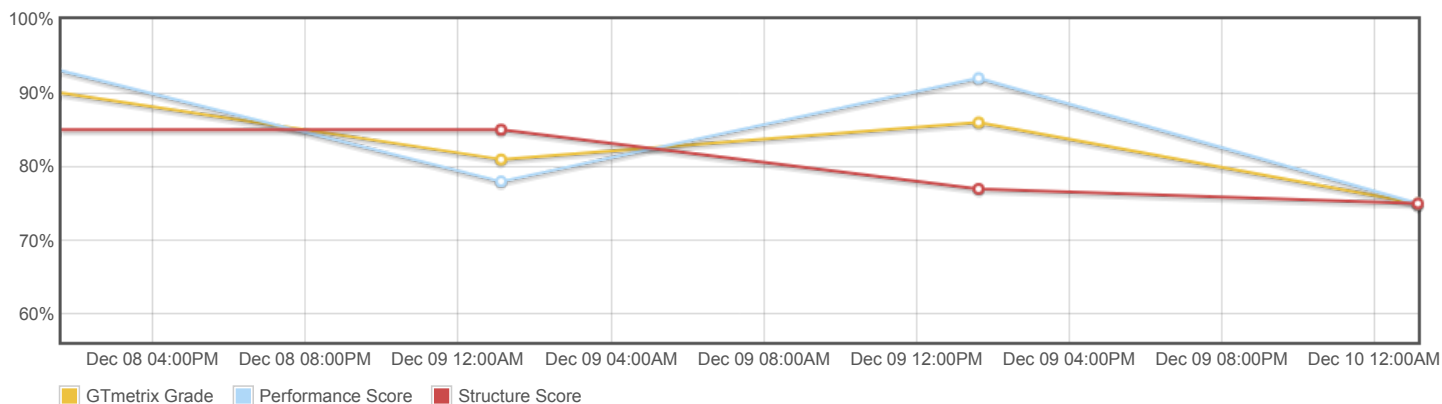
About GTmetrix

CARBON60
THE MANAGED CLOUD COMPANY

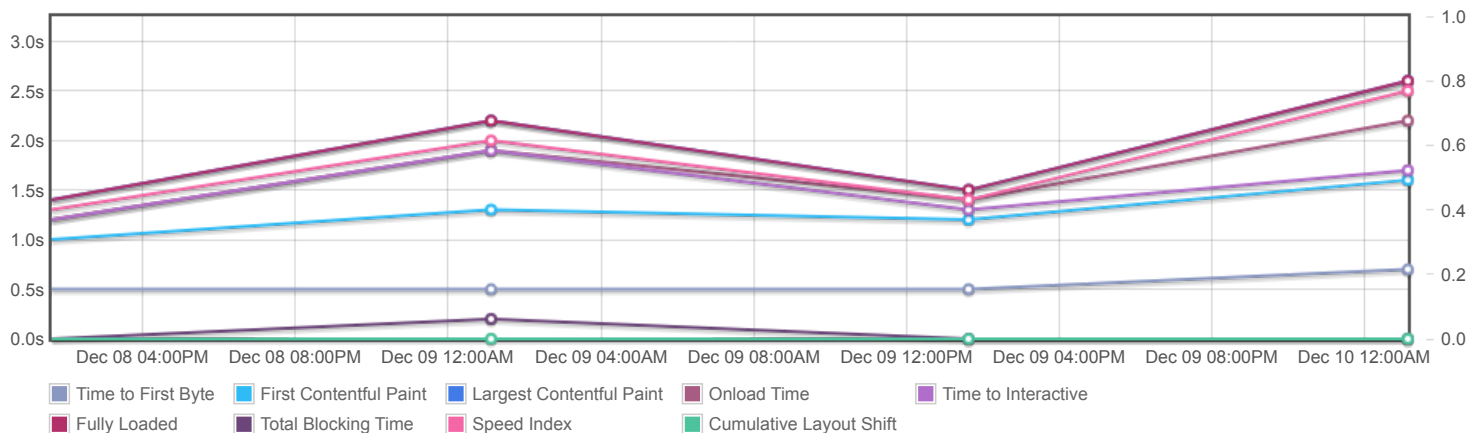
GTmetrix is developed by the good folks at **Carbon60**, a Canadian hosting company with over 27 years experience in web technology.

<https://carbon60.com/>

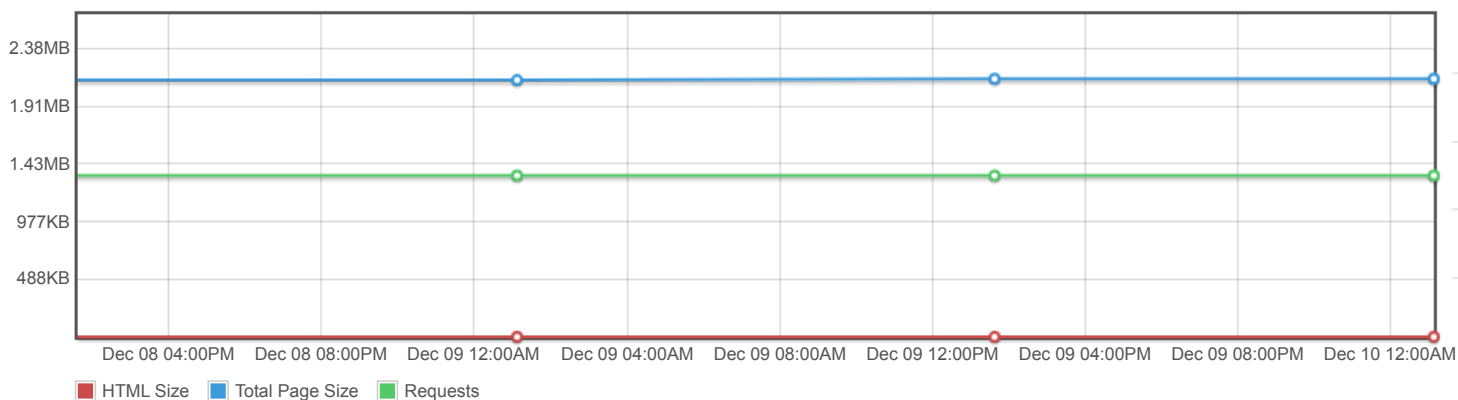
Page scores



Page metrics

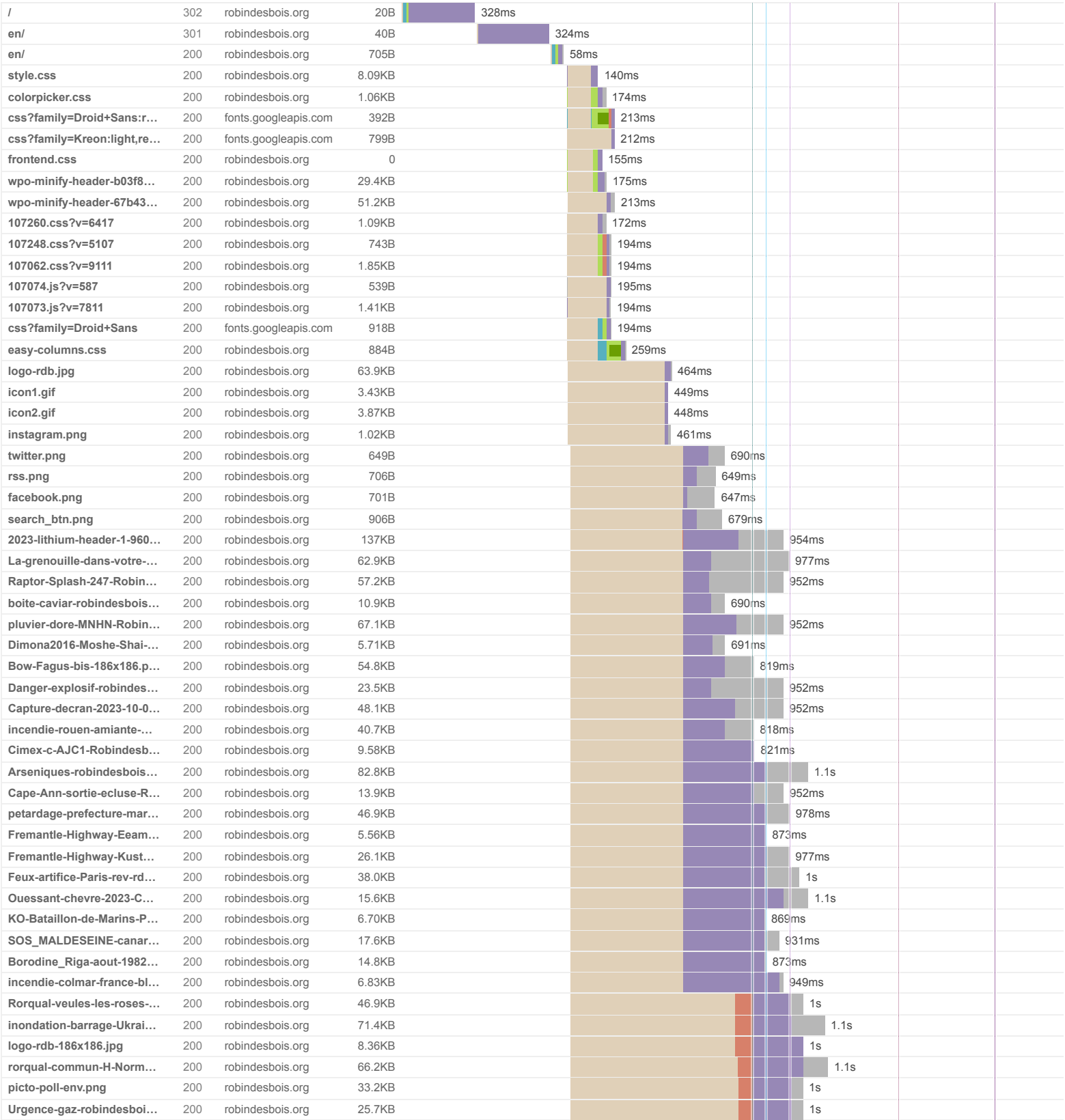


Page sizes and request counts

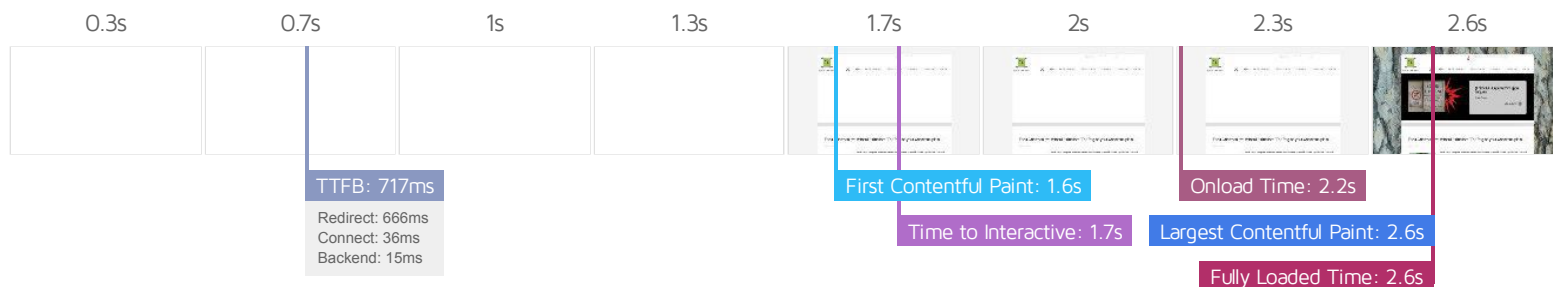


The waterfall chart displays the loading behaviour of your site in your selected browser. It can be used to discover simple issues such as 404's or more complex issues such as external resources blocking page rendering.

Robin des Bois | Association pour la protection de l'Homme et de l'environnement



feux-gironde-2022-sdis-3...	200	robindesbois.org	30.0KB							1.1s		
equipage-Onda-12aout20...	200	robindesbois.org	8.98KB							1.1s		
pic-mar-robindesbois-Ca...	200	robindesbois.org	16.6KB							1.2s		
Sao-Paulo-ex-Foch-MAJ-...	200	robindesbois.org	56.6KB							1.2s		
abeille-robindesbois-186x...	200	robindesbois.org	31.9KB							1.1s		
Sortie-d-usines-robindes...	200	robindesbois.org	20.2KB							1.1s		
ukraine-186x186.png	200	robindesbois.org	89.4KB							1.2s		
Bornholm-munitions-nor...	200	robindesbois.org	43.3KB							1.2s		
Notre-Dame_Maurice-Utril...	200	robindesbois.org	10.7KB							1.1s		
Emil-Nolde-Das-Meer-III_...	200	robindesbois.org	6.39KB							1.1s		
couverture-atlas-busines...	200	robindesbois.org	12.3KB							1.1s		
atlas-france-toxique-186x...	200	robindesbois.org	36.0KB							1.2s		
newsletter_lapin.png	200	robindesbois.org	4.51KB							1.1s		
spinner.gif	200	robindesbois.org	3.57KB							1.1s		
subscribe-validate.js	200	my.sendinblue.com	36.0KB							412ms		
picto_new.png	200	robindesbois.org	4.90KB							1.1s		
fr.png	200	robindesbois.org	513B							776ms		
gb.png	200	robindesbois.org	762B							775ms		
jquery.easing.1.3.js	200	robindesbois.org	2.34KB							344ms		
superfish.js	200	robindesbois.org	1.88KB							409ms		
custom.js	200	robindesbois.org	1.68KB							409ms		
wpo-minify-footer-851427...	200	robindesbois.org	18.9KB							411ms		
hit?wp_statistics_hit_rest...	200	robindesbois.org	143B							641ms		
analytics.js	200	google-analytics.com	20.9KB							572ms		
analytics.js	200	google-analytics.com	20.5KB							417ms		
OPTIONS hit?wp_statistic...	200	robindesbois.org	0							375ms		
ecorce.jpg	200	robindesbois.org	462KB							654ms		
header-shadow.png	200	robindesbois.org	494B							260ms		
search-bg.png	200	robindesbois.org	3.25KB							255ms		
featured-bg.png	200	robindesbois.org	1.44KB							358ms		
left-arrow.png	200	robindesbois.org	1.20KB							379ms		
right-arrow.png	200	robindesbois.org	1.20KB							379ms		
ajax-loader.gif	200	robindesbois.org	2.90KB							378ms		
bottom-category-bg.png	200	robindesbois.org	887B							379ms		
post-overlay.png	200	robindesbois.org	1.08KB							449ms		
readmore.png	200	robindesbois.org	1.65KB							449ms		
more-icon.png	200	robindesbois.org	3.71KB							307ms		
loadingAnimation.gif	200	robindesbois.org	5.75KB							166ms		
featured-top-shadow.png	200	robindesbois.org	482B								22ms	
featured-bottom-shadow....	200	robindesbois.org	482B								22ms	
featured-description.png	200	robindesbois.org	1.26KB								22ms	
favicon.ico	200	robindesbois.org	1.00KB								25ms	
95 Requests 2.13MB (2.72MB Uncompressed) Fully Loaded 2.6s (Onload 2.2s)												



Performance Metrics

First Contentful Paint How quickly content like text or images are painted onto your page. A good user experience is 0.9s or less.	Much longer than recommended 1.6s	Time to Interactive How long it takes for your page to become fully interactive. A good user experience is 2.5s or less.	Good - Nothing to do here 1.7s
Speed Index How quickly the contents of your page are visibly populated. A good user experience is 1.3s or less.	Much longer than recommended 2.5s	Total Blocking Time How much time is blocked by scripts during your page loading process. A good user experience is 150ms or less.	Good - Nothing to do here 1ms
Largest Contentful Paint How long it takes for the largest element of content (e.g. a hero image) to be painted on your page. A good user experience is 1.2s or less.	Much longer than recommended 2.6s	Cumulative Layout Shift How much your page's layout shifts as it loads. A good user experience is a score of 0.1 or less.	Good - Nothing to do here 0

Browser Timings

Redirect	666ms	Connect	36ms	Backend	15ms
TTFB	717ms	DOM Int.	1.5s	DOM Loaded	1.6s
First Paint	1.6s	Onload	2.2s	Fully Loaded	2.6s

IMPACT	AUDIT	
Med-High	Combine images using CSS sprites <small>FCP LCP</small>	16 images found
Med	Use explicit width and height on image elements <small>CLS</small>	7 images found
Med	Serve static assets with an efficient cache policy	Potential savings of 1.90MB
Med	Use a Content Delivery Network (CDN)	82 resources found
Med-Low	Avoid multiple page redirects <small>FCP LCP</small>	Potential savings of 662ms
Low	Eliminate render-blocking resources <small>FCP LCP</small>	Potential savings of 108ms
Low	Use a <meta name="viewport"> tag with width or initial-scale <small>TBT</small>	No <meta name="viewport"> tag found.
Low	Avoid an excessive DOM size <small>TBT</small>	841 elements
Low	Avoid enormous network payloads <small>LCP</small>	Total size was 2.17MB
Low	Serve images in next-gen formats	Potential savings of 1.17MB
Low	Efficiently encode images	Potential savings of 139KB
Low	Properly size images	Potential savings of 50.2KB
Low	Avoid long main-thread tasks <small>TBT</small>	6 long tasks found
Low	Reduce JavaScript execution time <small>TBT</small>	369ms spent executing JavaScript
Low	Reduce unused CSS <small>FCP LCP</small>	Potential savings of 28.2KB
Low	Defer offscreen images	Potential savings of 1.34MB
Low	Minify JavaScript <small>FCP LCP</small>	Potential savings of 12.0KB
Low	Avoid chaining critical requests <small>FCP LCP</small>	19 chains found
Low	Reduce unused JavaScript <small>LCP</small>	Potential savings of 55.9KB
Low	Use HTTP/2 for all resources	36 requests not served via HTTP/2
N/A	Largest Contentful Paint element <small>LCP</small>	2,650 ms
N/A	Reduce initial server response time <small>FCP LCP</small>	Root document took 14ms
N/A	Avoid serving legacy JavaScript to modern browsers <small>TBT</small>	Potential savings of 8.46KB

N/A	Avoid large layout shifts <small>CLS</small>	1 element found
N/A	Minimize main-thread work <small>TBT</small>	Main-thread busy for 1.6s
N/A	Reduce the impact of third-party code <small>TBT</small>	Total size was 79.8KB
N/A	User Timing marks and measures	