

Performance Report for: <http://www.novembre-architecture.com/>

Report generated: Sun, Dec 10, 2023 1:07 AM +0100 (via API)
 Test Server Location: London, UK
 Using: Chrome 117.0.0.0, Lighthouse 11.0.0
 Analysis options: Adblock Plus

B	Performance 90%	Structure 87%	L. Contentful Paint 1.9s	T. Blocking Time 0ms	C. Layout Shift 0
----------	---------------------------	-------------------------	------------------------------------	--------------------------------	-----------------------------

Top Issues

IMPACT	AUDIT	
Med	Don't lazy load Largest Contentful Paint image	LCP was lazy loaded
Med-Low	Use a Content Delivery Network (CDN)	20 resources found
Low	Use passive listeners to improve scrolling performance	1 event listener not passive
Low	Allow back/forward cache restoration	2 failure reasons
Low	Eliminate render-blocking resources	Potential savings of 24ms

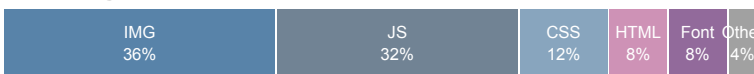
Page Details



Total Page Size - 1.05MB



Total Page Requests - 25



HTML JS CSS IMG Video Font Other

How does this affect me?

Today's web user expects a fast and seamless website experience. Delivering that fast experience can result in increased visits, conversions and overall happiness.

As if you didn't need more incentive, **Google has announced that they are using page speed in their ranking algorithm.**

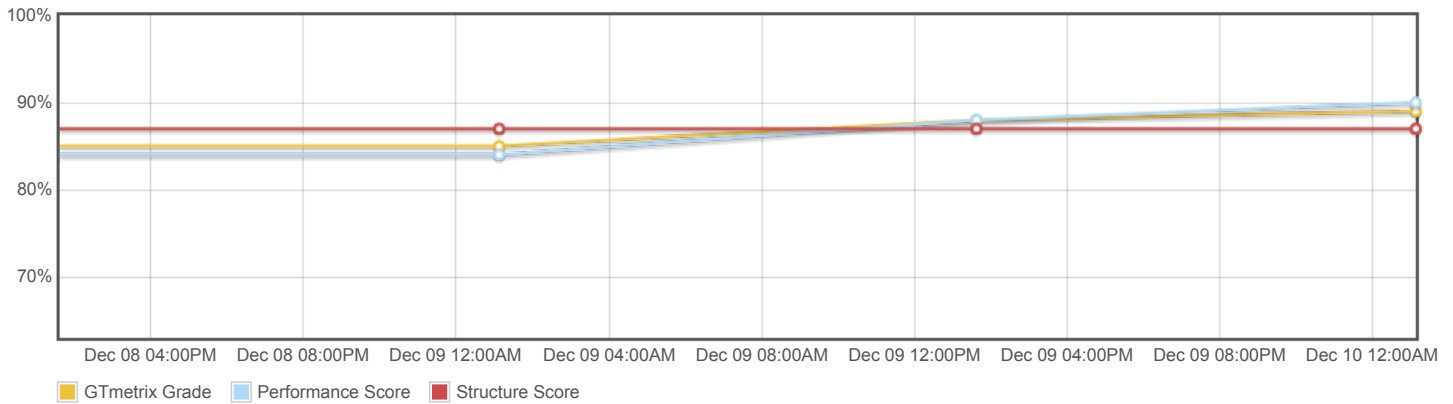
About GTmetrix

CARBON60
THE MANAGED CLOUD COMPANY

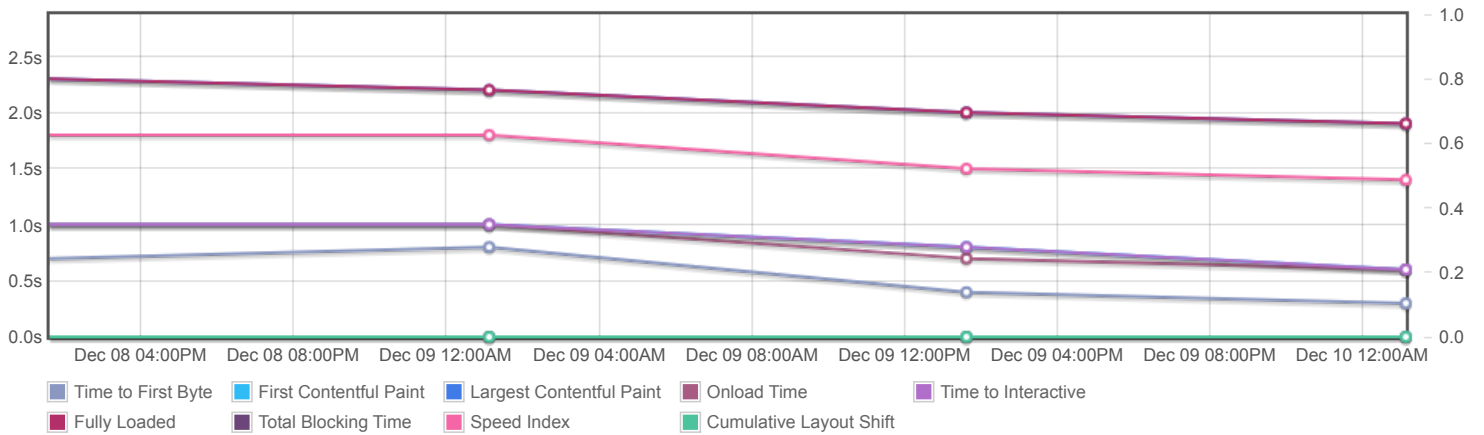
GTmetrix is developed by the good folks at **Carbon60**, a Canadian hosting company with over 27 years experience in web technology.

<https://carbon60.com/>

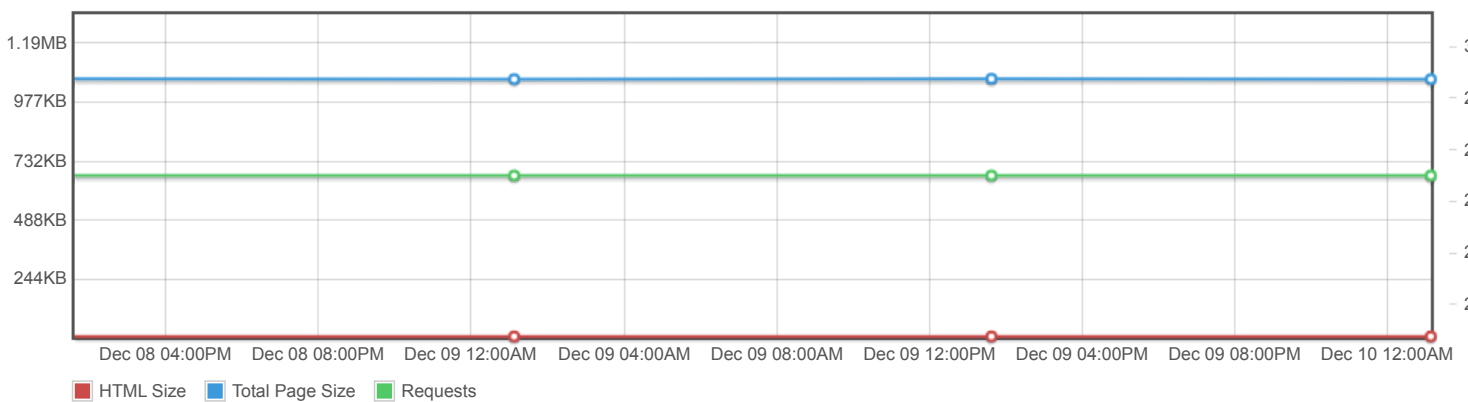
Page scores



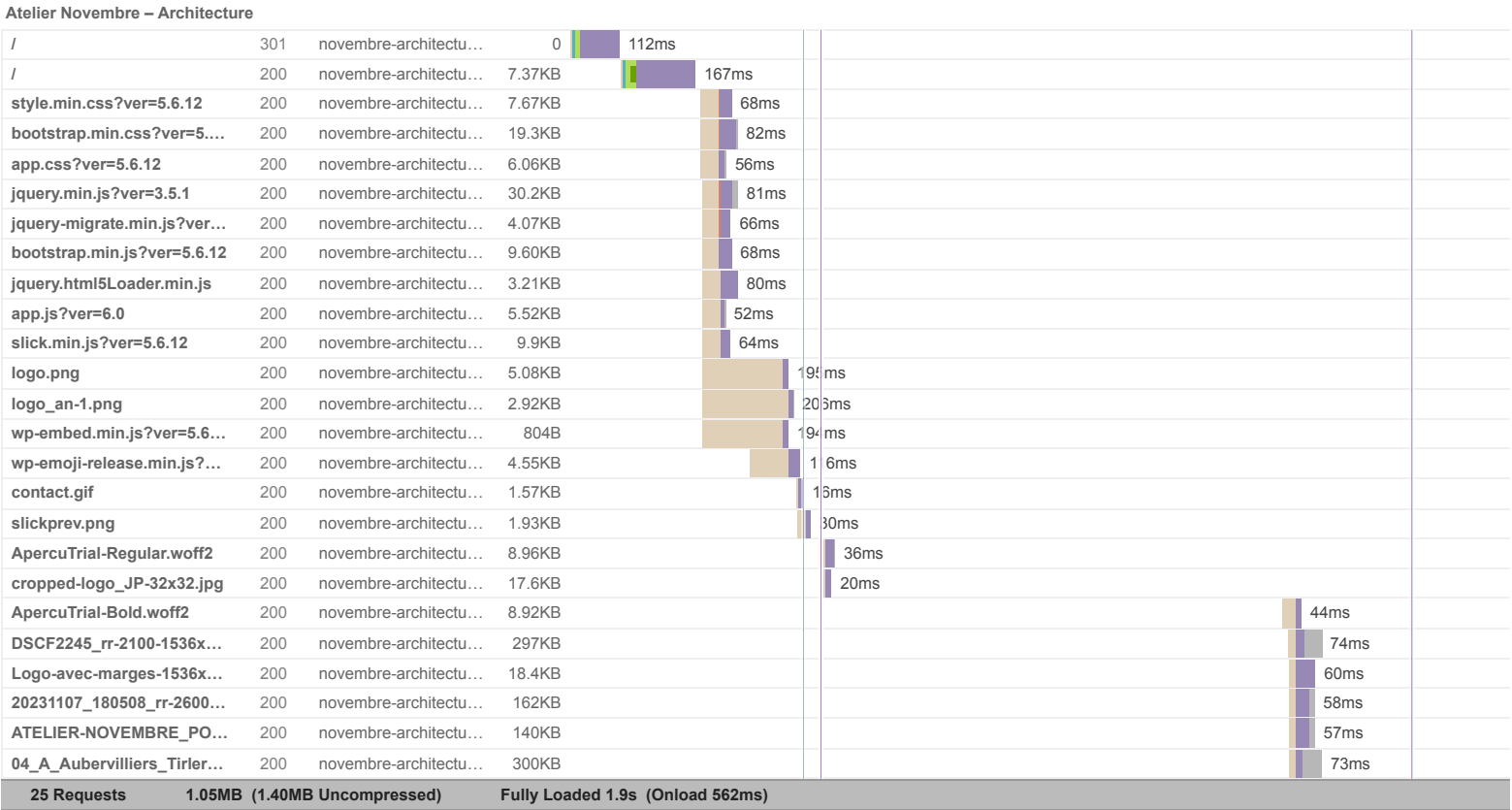
Page metrics

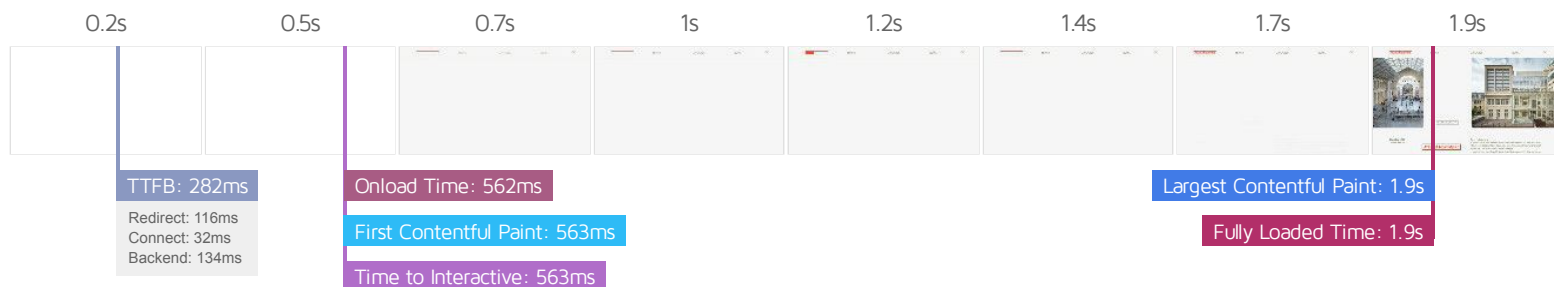


Page sizes and request counts



The waterfall chart displays the loading behaviour of your site in your selected browser. It can be used to discover simple issues such as 404's or more complex issues such as external resources blocking page rendering.





Performance Metrics

First Contentful Paint How quickly content like text or images are painted onto your page. A good user experience is 0.9s or less.	Good - Nothing to do here 562ms	Time to Interactive How long it takes for your page to become fully interactive. A good user experience is 2.5s or less.	Good - Nothing to do here 562ms
Speed Index How quickly the contents of your page are visibly populated. A good user experience is 1.3s or less.	OK, but consider improvement 1.4s	Total Blocking Time How much time is blocked by scripts during your page loading process. A good user experience is 150ms or less.	Good - Nothing to do here 0ms
Largest Contentful Paint How long it takes for the largest element of content (e.g. a hero image) to be painted on your page. A good user experience is 1.2s or less.	Longer than recommended 1.9s	Cumulative Layout Shift How much your page's layout shifts as it loads. A good user experience is a score of 0.1 or less.	Good - Nothing to do here 0

Browser Timings

Redirect	116ms	Connect	32ms	Backend	134ms
TTFB	282ms	DOM Int.	518ms	DOM Loaded	522ms
Onload	562ms	First Paint	563ms	Fully Loaded	1.9s

IMPACT	AUDIT	
Med	Don't lazy load Largest Contentful Paint image <small>LCP</small>	LCP was lazy loaded
Med-Low	Use a Content Delivery Network (CDN)	20 resources found
Low	Use passive listeners to improve scrolling performance	1 event listener not passive
Low	Allow back/forward cache restoration	2 failure reasons
Low	Eliminate render-blocking resources <small>FCP LCP</small>	Potential savings of 24ms
Low	Avoid chaining critical requests <small>FCP LCP</small>	11 chains found
Low	Avoid an excessive DOM size <small>TBT</small>	366 elements
Low	Avoid enormous network payloads <small>LCP</small>	Total size was 1.05MB
Low	Properly size images	Potential savings of 4.19KB
Low	Avoid multiple page redirects <small>FCP LCP</small>	Potential savings of 114ms
Low	Ensure text remains visible during webfont load <small>FCP LCP</small>	2 fonts found
Low	Avoid long main-thread tasks <small>TBT</small>	1 long task found
Low	Reduce JavaScript execution time <small>TBT</small>	188ms spent executing JavaScript
Low	Reduce unused CSS <small>FCP LCP</small>	Potential savings of 19.0KB
Low	Serve images in next-gen formats	Potential savings of 303KB
Low	Reduce initial server response time <small>FCP LCP</small>	Root document took 133ms
Low	Defer offscreen images	Potential savings of 2.92KB
Low	Avoid non-composited animations <small>CLS</small>	2 animated elements found
Low	Minify JavaScript <small>FCP LCP</small>	Potential savings of 14.8KB
N/A	Largest Contentful Paint element <small>LCP</small>	1,900 ms
N/A	Avoid serving legacy JavaScript to modern browsers <small>TBT</small>	Potential savings of 8.46KB
N/A	Minimize main-thread work <small>TBT</small>	Main-thread busy for 525ms
N/A	Avoid large layout shifts <small>CLS</small>	

N/A	User Timing marks and measures
N/A	Reduce the impact of third-party code <small>TBT</small>