



Performance Report for: <http://www.kylianmbappe.com/>

Report generated: Sat, Dec 9, 2023 1:00 AM +0100 (via API)
 Test Server Location: London, UK
 Using: Chrome 117.0.0.0, Lighthouse 11.0.0
 Analysis options: Adblock Plus

E	Performance 39%	Structure 83%	L. Contentful Paint 6.3s	T. Blocking Time 385ms	C. Layout Shift 0.01
----------	---------------------------	-------------------------	------------------------------------	----------------------------------	--------------------------------

Top Issues

IMPACT AUDIT

Med-High	Avoid chaining critical requests <small>FCP LCP</small>	74 chains found
Med	Serve static assets with an efficient cache policy	Potential savings of 2.15MB
Med	Avoid enormous network payloads <small>LCP</small>	Total size was 3.47MB
Med-Low	Avoid long main-thread tasks <small>TBT</small>	19 long tasks found
Med-Low	Eliminate render-blocking resources <small>FCP LCP</small>	Potential savings of 226ms

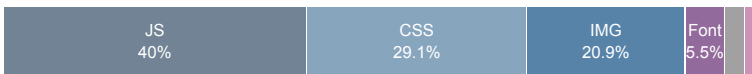
Page Details



Total Page Size - 3.46MB



Total Page Requests - 110



HTML JS CSS IMG Video Font Other

How does this affect me?

Today's web user expects a fast and seamless website experience. Delivering that fast experience can result in increased visits, conversions and overall happiness.

As if you didn't need more incentive, **Google has announced that they are using page speed in their ranking algorithm.**

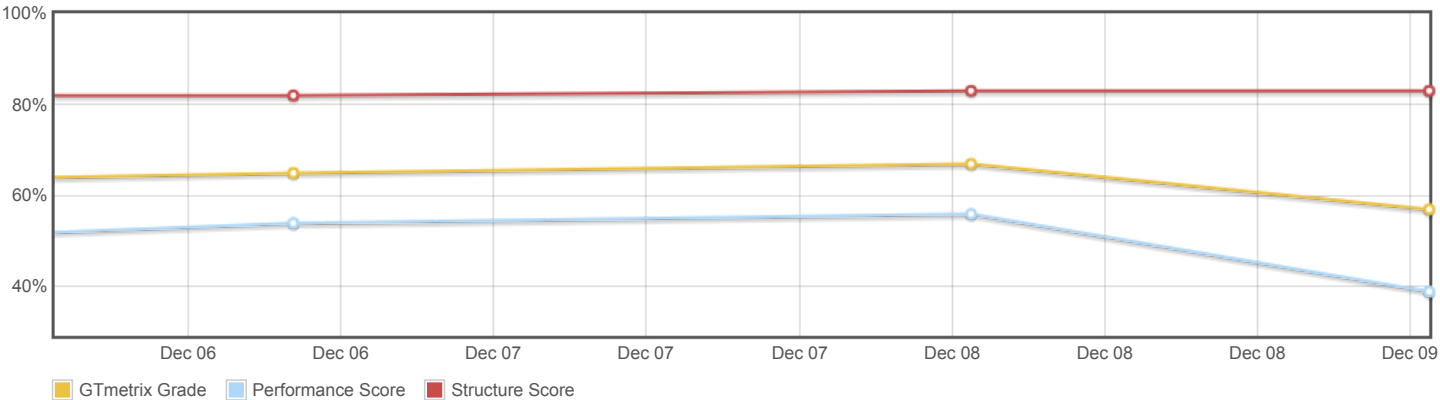
About GTmetrix

CARBON60
THE MANAGED CLOUD COMPANY

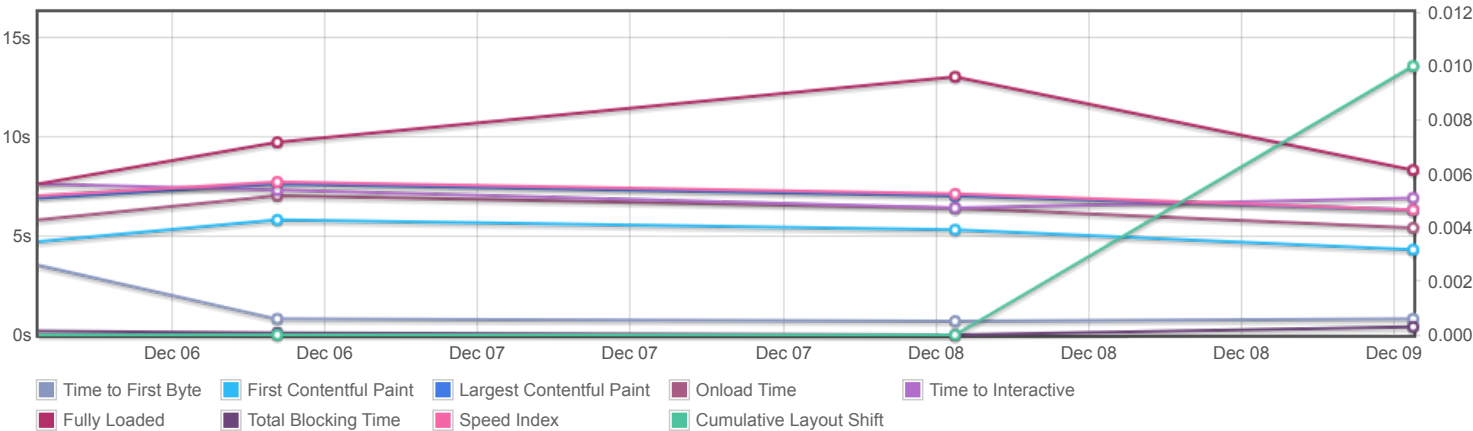
GTmetrix is developed by the good folks at **Carbon60**, a Canadian hosting company with over 27 years experience in web technology.

<https://carbon60.com/>

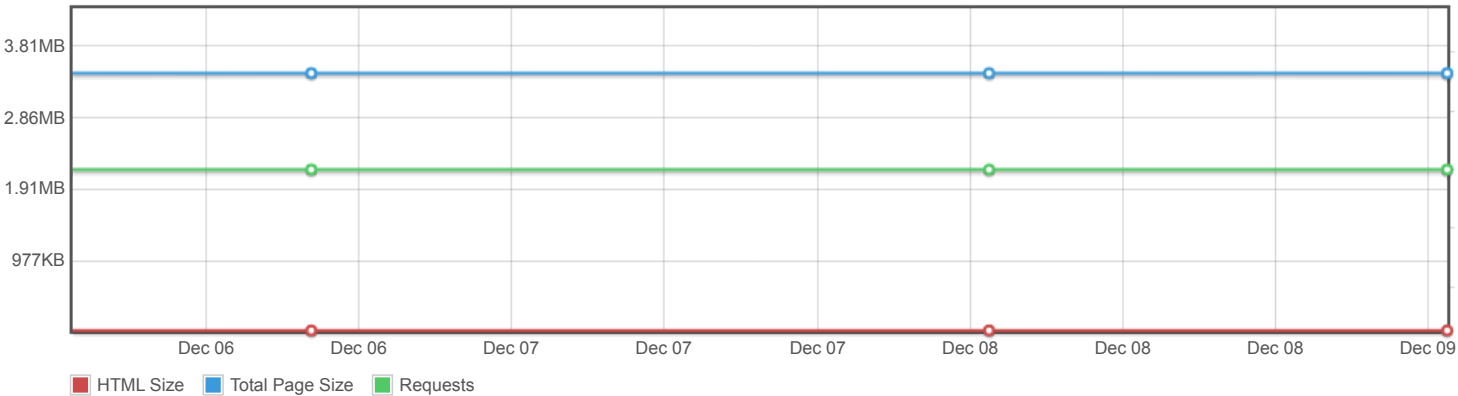
Page scores



Page metrics

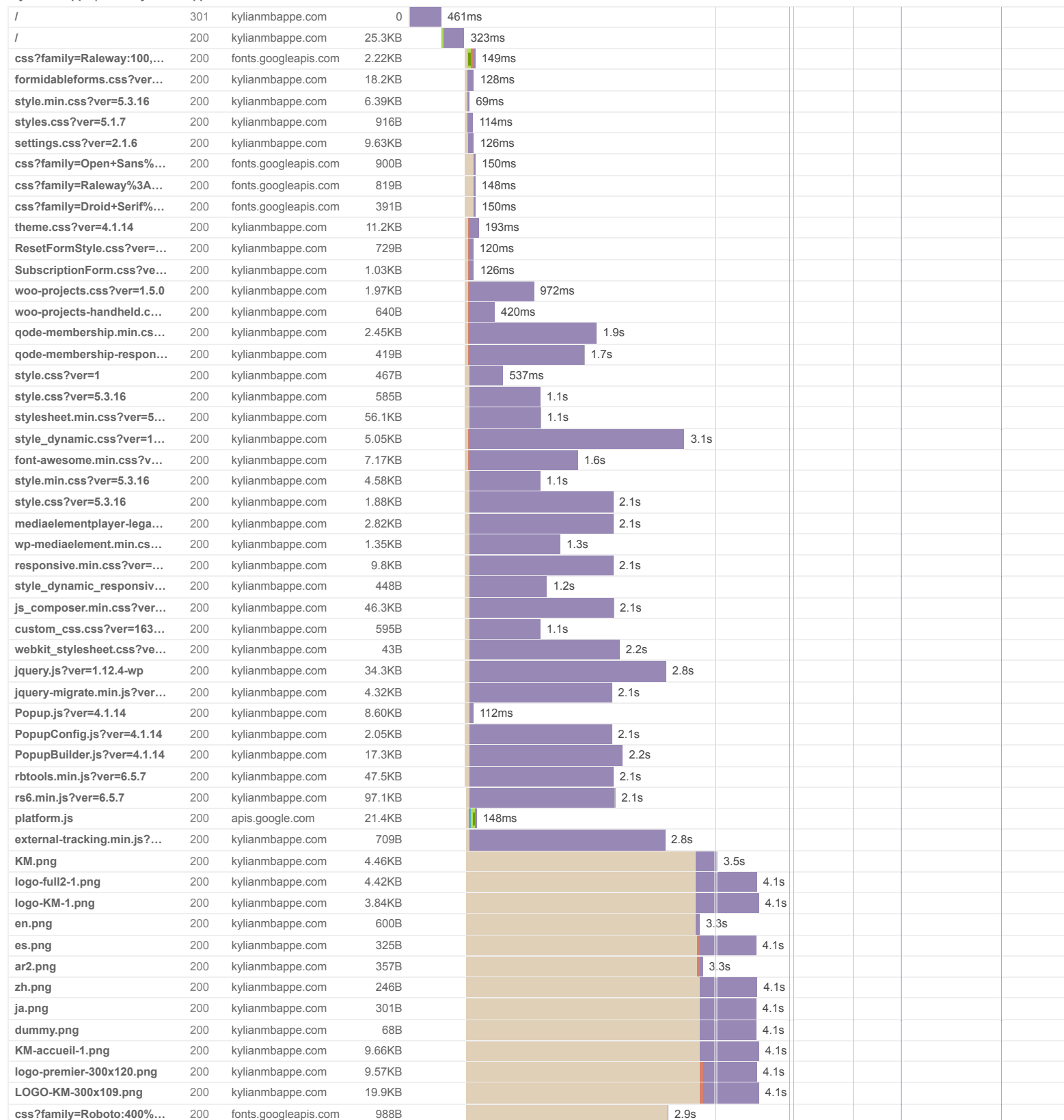


Page sizes and request counts

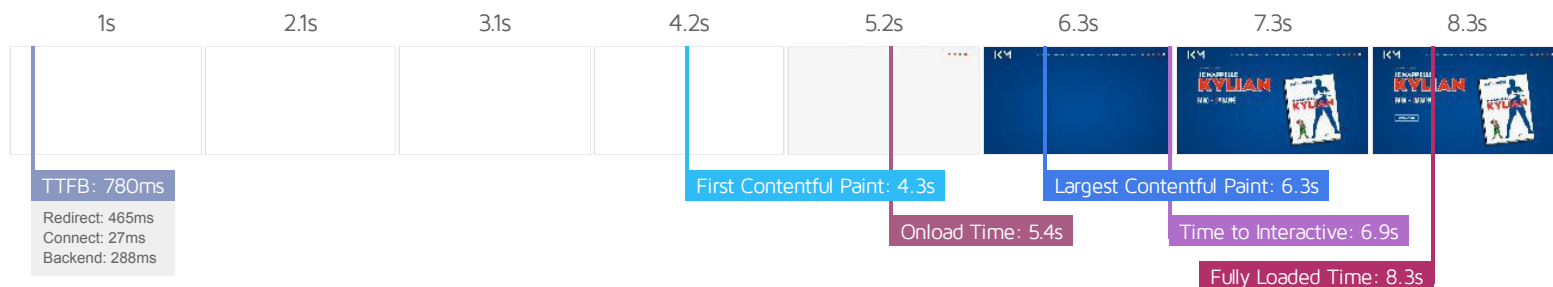


The waterfall chart displays the loading behaviour of your site in your selected browser. It can be used to discover simple issues such as 404's or more complex issues such as external resources blocking page rendering.

Kylian Mbappe | K M - Kylian Mbappé official website



email-decode.min.js	200	kylianmbappe.com	1.04KB		2.9s						
elfsight-facebook-feed-cu...	200	kylianmbappe.com	363B		3.1s						
rs6.css?ver=6.5.7	200	kylianmbappe.com	12.7KB		3.1s						
scripts.js?ver=5.1.7	200	kylianmbappe.com	4.26KB		3.1s						
SubscriptionPlusForm.js...	200	kylianmbappe.com	2.54KB		3.3s						
Validate.js?ver=4.1.14	200	kylianmbappe.com	8.10KB		3.3s						
underscore.min.js?ver=1...	200	kylianmbappe.com	6.04KB		3.3s						
core.min.js?ver=1.11.4	200	kylianmbappe.com	2.03KB		3.3s						
widget.min.js?ver=1.11.4	200	kylianmbappe.com	2.79KB		3.3s						
tabs.min.js?ver=1.11.4	200	kylianmbappe.com	4.19KB		3.3s						
qode-membership.min.js...	200	kylianmbappe.com	1.79KB		3.3s						
qode-like.js?ver=1.0	200	kylianmbappe.com	653B		3.8s						
mediaelement-and-player....	200	kylianmbappe.com	38.9KB		3.3s						
mediaelement-migrate.mi...	200	kylianmbappe.com	786B		3.3s						
wp-mediaelement.min.js?...	200	kylianmbappe.com	788B		3.3s						
plugins.js?ver=5.3.16	200	kylianmbappe.com	170KB		4.2s						
jquery.carouFredSel-6.2.1...	200	kylianmbappe.com	19.4KB		3.3s						
jquery.fullPage.min.js?ve...	200	kylianmbappe.com	7.45KB		3.3s						
lemmon-slider.js?ver=5.3....	200	kylianmbappe.com	2.65KB		3.3s						
jquery.mousewheel.min.j...	200	kylianmbappe.com	1.00KB		3.3s						
jquery.touchSwipe.min.js...	200	kylianmbappe.com	4.30KB		3.3s						
isotope.pkgd.min.js?ver=...	200	kylianmbappe.com	10.5KB		4.1s						
jquery.parallax-scroll.js?v...	200	kylianmbappe.com	2.24KB		4.1s						
default_dynamic.js?ver=1...	200	kylianmbappe.com	1.80KB		4.1s						
default.min.js?ver=5.3.16	200	kylianmbappe.com	22.8KB		4.1s						
custom_js.js?ver=163401...	200	kylianmbappe.com	426B		3.3s						
SmoothScroll.js?ver=5.3.16	200	kylianmbappe.com	4.26KB		4.1s						
comment-reply.min.js?ve...	200	kylianmbappe.com	1.38KB		4.1s						
js_composer_front.min.js...	200	kylianmbappe.com	6.15KB		4.1s						
wp-embed.min.js?ver=5.3...	200	kylianmbappe.com	0.99KB		4.1s						
elfsight-facebook-feed.js...	200	kylianmbappe.com	99KB		4.1s						
elfsight-instagram-feed.js...	200	kylianmbappe.com	73.2KB		4.1s						
wp-emoji-release.min.js?...	200	kylianmbappe.com	4.68KB		3.9s						
sdk.js	200	static.axept.io	72B		214ms						
analytics.js	200	google-analytics.com	20.5KB		269ms						
memvYaGs126MiZpBA-U...	200	fonts.gstatic.com	47.3KB		146ms						
ElegantIcons.woff	200	kylianmbappe.com	62.5KB		717ms						
Fond_01.jpg	200	kylianmbappe.com	349KB		514ms						
actualites-1.jpg	200	kylianmbappe.com	329KB		512ms						
FOND-3.jpg	200	kylianmbappe.com	396KB		498ms						
stats.jpg	200	kylianmbappe.com	443KB		509ms						
premier-de-cordee.jpg	200	kylianmbappe.com	331KB		510ms						
memtYaGs126MiZpBA-UF...	200	fonts.gstatic.com	49.2KB		211ms						
KFOmCnqEu92Fr1Mu4mx...	200	fonts.gstatic.com	15.4KB		204ms						
1Ptug8zYS_SKggPNyC0I...	200	fonts.gstatic.com	47.1KB		178ms						
sdk.js	200	connect.facebook.net	1.65KB		67ms						
sdk.js?hash=3a7e343870...	200	connect.facebook.net	85.0KB		56ms						
transparent.png	200	kylianmbappe.com	122B		59ms						
Couv4.png	200	kylianmbappe.com	98KB		70ms						
titre2.png	200	kylianmbappe.com	14.4KB		41ms						
faro3.png	200	kylianmbappe.com	5.72KB		57ms						
Fond_12.jpg	200	kylianmbappe.com	186KB		66ms						
Titre.png	200	kylianmbappe.com	14.5KB		63ms						
favicon-13.ico	200	kylianmbappe.com	504B		66ms						
admin-ajax.php?count=3...	200	kylianmbappe.com	580B		2.1s						
KFOICnqEu92Fr1MmWUif...	200	fonts.gstatic.com	15.5KB		60ms						
admin-ajax.php?count=3...	200	kylianmbappe.com	328B		539ms						
110 Requests 3.46MB (6.97MB Uncompressed) 8.3s (Onload 5.4s)											



Performance Metrics

First Contentful Paint How quickly content like text or images are painted onto your page. A good user experience is 0.9s or less.	Much longer than recommended 4.3s	Time to Interactive How long it takes for your page to become fully interactive. A good user experience is 2.5s or less.	Much longer than recommended 6.9s
Speed Index How quickly the contents of your page are visibly populated. A good user experience is 1.3s or less.	Much longer than recommended 6.3s	Total Blocking Time How much time is blocked by scripts during your page loading process. A good user experience is 150ms or less.	Much longer than recommended 385ms
Largest Contentful Paint How long it takes for the largest element of content (e.g. a hero image) to be painted on your page. A good user experience is 1.2s or less.	Much longer than recommended 6.3s	Cumulative Layout Shift How much your page's layout shifts as it loads. A good user experience is a score of 0.1 or less.	Good - Nothing to do here 0.01

Browser Timings

Redirect	465ms	Connect	27ms	Backend	288ms
TTFB	780ms	First Paint	4.3s	DOM Int.	5.3s
DOM Loaded	5.4s	Onload	5.4s	Fully Loaded	8.3s

IMPACT	AUDIT	
Med-High	Avoid chaining critical requests <small>FCP</small> <small>LCP</small>	74 chains found
Med	Serve static assets with an efficient cache policy	Potential savings of 2.15MB
Med	Avoid enormous network payloads <small>LCP</small>	Total size was 3.47MB
Med-Low	Avoid long main-thread tasks <small>TBT</small>	19 long tasks found
Med-Low	Eliminate render-blocking resources <small>FCP</small> <small>LCP</small>	Potential savings of 226ms
Low	Allow back/forward cache restoration	1 failure reason
Low	Ensure text remains visible during webfont load <small>FCP</small> <small>LCP</small>	4 fonts found
Low	Avoid an excessive DOM size <small>TBT</small>	747 elements
Low	Reduce JavaScript execution time <small>TBT</small>	826ms spent executing JavaScript
Low	Properly size images	Potential savings of 122KB
Low	Avoid multiple page redirects <small>FCP</small> <small>LCP</small>	Potential savings of 465ms
Low	Efficiently encode images	Potential savings of 121KB
Low	Reduce unused CSS <small>FCP</small> <small>LCP</small>	Potential savings of 155KB
Low	Serve images in next-gen formats	Potential savings of 1.14MB
Low	Reduce initial server response time <small>FCP</small> <small>LCP</small>	Root document took 287ms
Low	Defer offscreen images	Potential savings of 1.17MB
Low	Minify CSS <small>FCP</small> <small>LCP</small>	Potential savings of 2.17KB
Low	Avoid non-composited animations <small>CLS</small>	2 animated elements found
Low	Minify JavaScript <small>FCP</small> <small>LCP</small>	Potential savings of 21.2KB
Low	Reduce unused JavaScript <small>LCP</small>	Potential savings of 393KB
N/A	Largest Contentful Paint element <small>LCP</small>	6,250 ms
N/A	Avoid serving legacy JavaScript to modern browsers <small>TBT</small>	Potential savings of 41.4KB
N/A	Avoid large layout shifts <small>CLS</small>	1 element found

N/A	Minimize main-thread work <small>TBT</small>	Main-thread busy for 3.6s
N/A	Reduce the impact of third-party code <small>TBT</small>	Third-party code blocked the main thread for 43ms
N/A	User Timing marks and measures	