



## Performance Report for: <http://www.pharmaciebarbusse-drancy.fr/>

Report generated: Sun, Dec 10, 2023 1:00 AM +0100 (via API)  
 Test Server Location: London, UK  
 Using: Chrome 117.0.0.0, Lighthouse 11.0.0  
 Analysis options: Adblock Plus

<b>D</b>	Performance <b>46%</b>	Structure <b>88%</b>	L. Contentful Paint <b>4.0s</b>	T. Blocking Time <b>268ms</b>	C. Layout Shift <b>0.12</b>
----------	---------------------------	-------------------------	------------------------------------	----------------------------------	--------------------------------

### Top Issues

IMPACT	AUDIT	
High	Reduce initial server response time	Root document took 1.2s
Med	Use explicit width and height on image elements	5 images found
Med	Serve static assets with an efficient cache policy	Potential savings of 1.33MB
Med-Low	Use a Content Delivery Network (CDN)	25 resources found
Med-Low	Lazy load third-party resources with facades	1 facade alternative available

### Page Details



Total Page Size - 2.69MB



Total Page Requests - 72



HTML JS CSS IMG Video Font Other

### How does this affect me?

Today's web user expects a fast and seamless website experience. Delivering that fast experience can result in increased visits, conversions and overall happiness.

As if you didn't need more incentive, **Google has announced that they are using page speed in their ranking algorithm.**

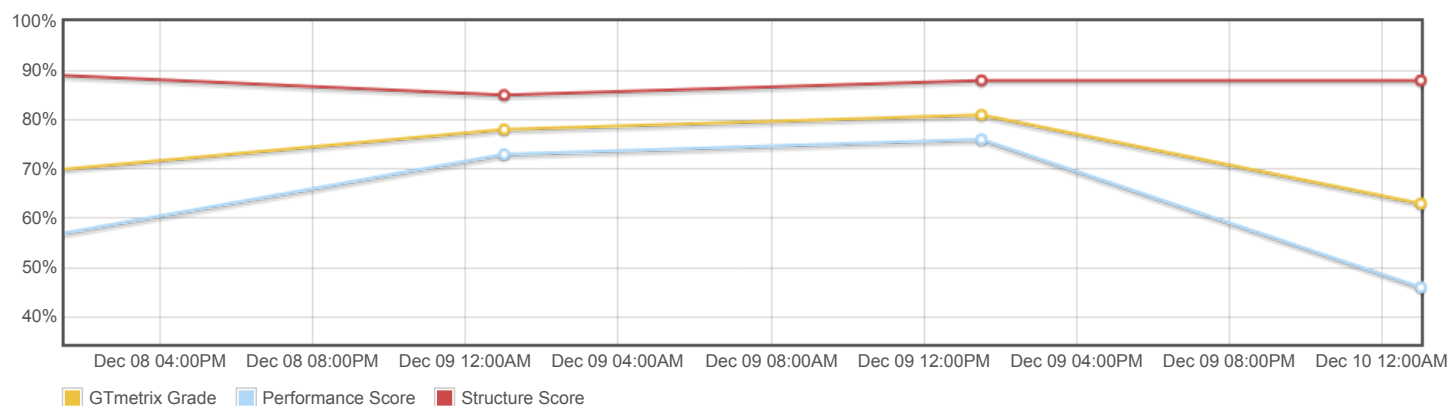
### About GTmetrix

**CARBON60**  
THE MANAGED CLOUD COMPANY

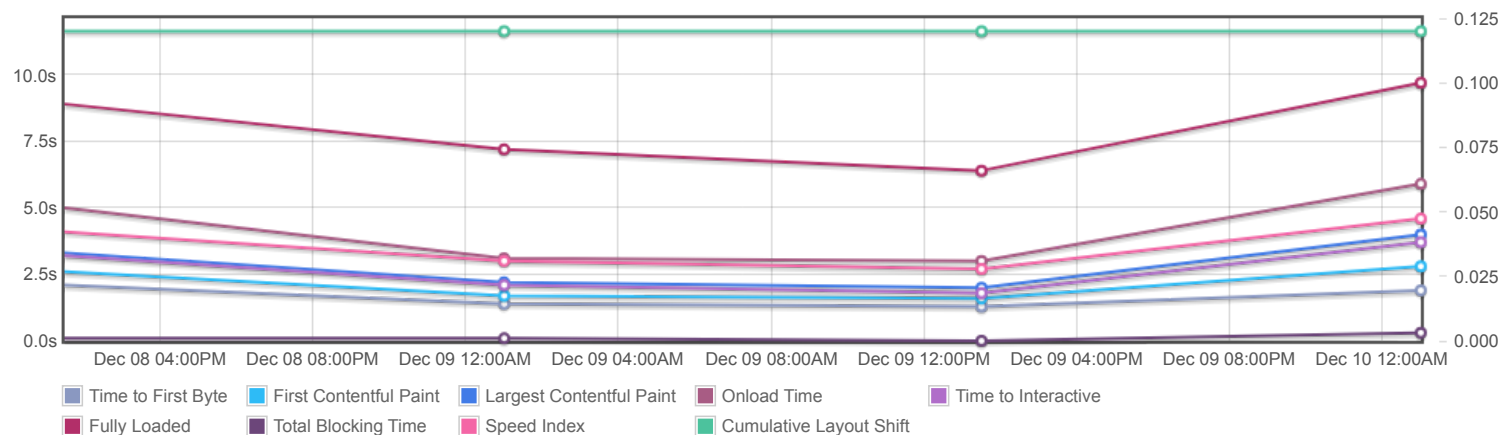
GTmetrix is developed by the good folks at **Carbon60**, a Canadian hosting company with over 27 years experience in web technology.

<https://carbon60.com/>

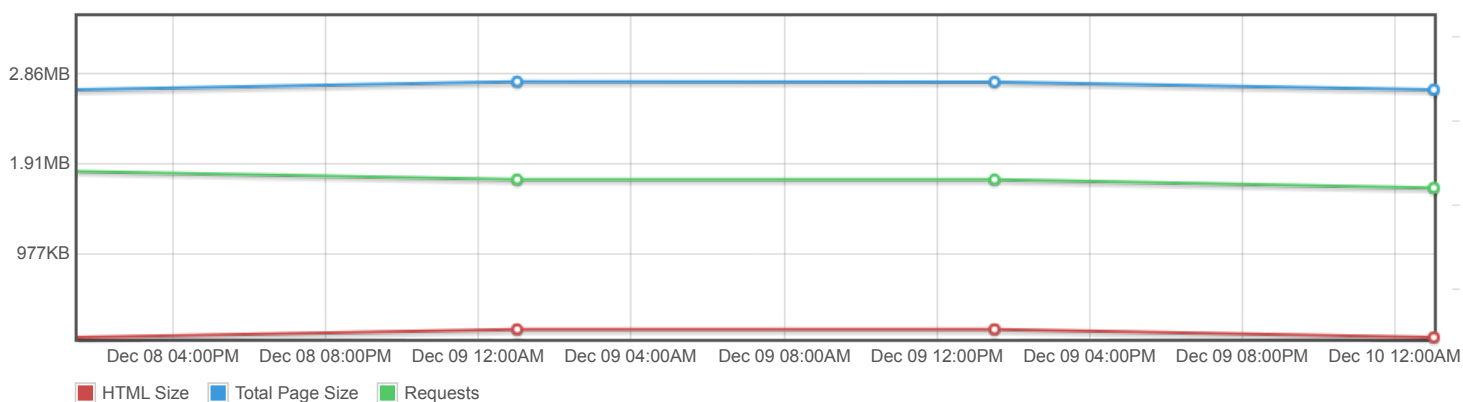
## Page scores



## Page metrics

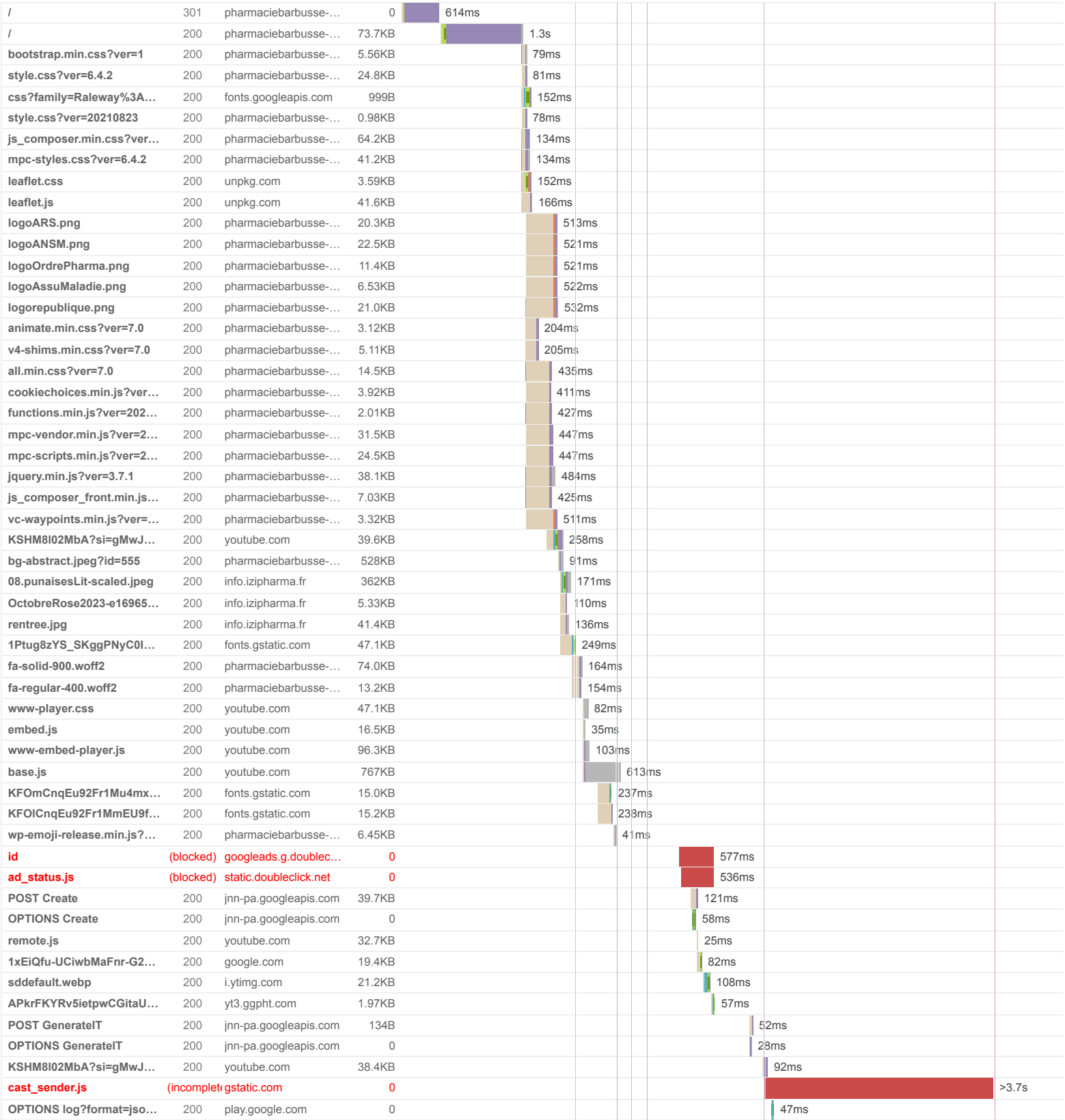


## Page sizes and request counts

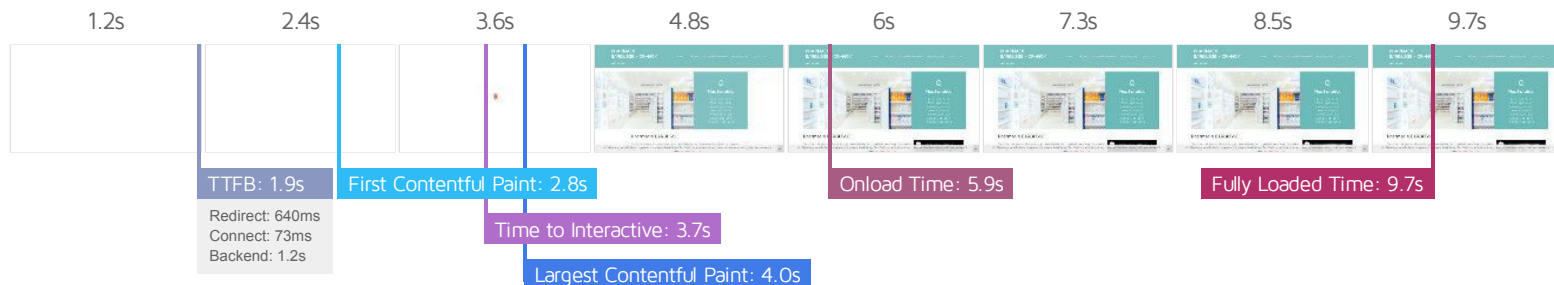


The waterfall chart displays the loading behaviour of your site in your selected browser. It can be used to discover simple issues such as 404's or more complex issues such as external resources blocking page rendering.

PHARMACIE BARBUSSE – DRANCY – 01 48 30 03 27



www-player.css	200	youtube.com	0					20ms	
embed.js	200	youtube.com	0					18ms	
www-embed-player.js	200	youtube.com	0					0ms	
base.js	200	youtube.com	0					0ms	
KFOmCnqEu92Fr1Mu4mx...	200	fonts.gstatic.com	0					0ms	
KFOlCnqEu92Fr1MmEU9f...	200	fonts.gstatic.com	0					0ms	
id	(blocked)	googleads.g.doublec...	0					25ms	
ad_status.js	(blocked)	static.doubleclick.net	0					205ms	
POST Create	200	jnn-pa.googleapis.com	39.9KB					42ms	
remote.js	200	youtube.com	0					0ms	
1xEiQfu-UCiwbMaFnr-G2...	200	google.com	0					0ms	
sddefault.webp	200	i.ytimg.com	0					0ms	
APkrFKYRv5ietpwCGitaU...	200	yt3.ggpht.com	0					0ms	
cast_sender.js	200	gstatic.com	1.96KB					39ms	
POST GenerateIT	200	jnn-pa.googleapis.com	134B					30ms	
generate_204?BNOi1A	204	youtube.com	0					13ms	
cast_sender.js	200	gstatic.com	15.0KB					18ms	
cropped-favicon-32x32.png	200	pharmaciebarbusse-...	0.98KB					43ms	
POST log_event?alt=json...	200	youtube.com	54B						32ms
72 Requests    2.69MB (16.6MB Uncompressed)    Fully Loaded 9.7s (Onload 5.9s)									



## Performance Metrics

<b>First Contentful Paint</b> How quickly content like text or images are painted onto your page. A good user experience is 0.9s or less.	Much longer than recommended <b>2.8s</b>	<b>Time to Interactive</b> How long it takes for your page to become fully interactive. A good user experience is 2.5s or less.	Longer than recommended <b>3.7s</b>
<b>Speed Index</b> How quickly the contents of your page are visibly populated. A good user experience is 1.3s or less.	Much longer than recommended <b>4.6s</b>	<b>Total Blocking Time</b> How much time is blocked by scripts during your page loading process. A good user experience is 150ms or less.	Longer than recommended <b>268ms</b>
<b>Largest Contentful Paint</b> How long it takes for the largest element of content (e.g. a hero image) to be painted on your page. A good user experience is 1.2s or less.	Much longer than recommended <b>4.0s</b>	<b>Cumulative Layout Shift</b> How much your page's layout shifts as it loads. A good user experience is a score of 0.1 or less.	OK, but consider improvement <b>0.12</b>

## Browser Timings

Redirect	640ms	Connect	73ms	Backend	1.2s
TTFB	1.9s	First Paint	2.8s	DOM Int.	3.5s
DOM Loaded	3.5s	Onload	5.9s	Fully Loaded	9.7s

IMPACT	AUDIT	
High	<b>Reduce initial server response time</b> <small>FCP LCP</small>	Root document took 1.2s
Med	<b>Use explicit width and height on image elements</b> <small>CLS</small>	5 images found
Med	<b>Serve static assets with an efficient cache policy</b>	Potential savings of 1.33MB
Med-Low	<b>Use a Content Delivery Network (CDN)</b>	25 resources found
Med-Low	<b>Lazy load third-party resources with facades</b> <small>TBT</small>	1 facade alternative available
Low	<b>Avoid long main-thread tasks</b> <small>TBT</small>	11 long tasks found
Low	<b>Avoid enormous network payloads</b> <small>LCP</small>	Total size was 2.70MB
Low	<b>Avoid chaining critical requests</b> <small>FCP LCP</small>	19 chains found
Low	<b>Avoid large layout shifts</b> <small>CLS</small>	2 elements found
Low	<b>Eliminate render-blocking resources</b> <small>FCP LCP</small>	Potential savings of 54ms
Low	<b>Ensure text remains visible during webfont load</b> <small>FCP LCP</small>	2 fonts found
Low	<b>Avoid an excessive DOM size</b> <small>TBT</small>	361 elements
Low	<b>Properly size images</b>	Potential savings of 31.5KB
Low	<b>Avoid multiple page redirects</b> <small>FCP LCP</small>	Potential savings of 638ms
Low	<b>Efficiently encode images</b>	Potential savings of 415KB
Low	<b>Reduce JavaScript execution time</b> <small>TBT</small>	292ms spent executing JavaScript
Low	<b>Reduce unused CSS</b> <small>FCP LCP</small>	Potential savings of 142KB
Low	<b>Serve images in next-gen formats</b>	Potential savings of 739KB
Low	<b>Defer offscreen images</b>	Potential savings of 81.8KB
Low	<b>Minify CSS</b> <small>FCP LCP</small>	Potential savings of 11.8KB
Low	<b>Minify JavaScript</b> <small>FCP LCP</small>	Potential savings of 12.0KB
Low	<b>Reduce unused JavaScript</b> <small>LCP</small>	Potential savings of 110KB
N/A	<b>Largest Contentful Paint element</b> <small>LCP</small>	3,990 ms

N/A	Avoid serving legacy JavaScript to modern browsers TBT	Potential savings of 8.46KB
N/A	Minimize main-thread work TBT	Main-thread busy for 1.8s
N/A	Reduce the impact of third-party code TBT	Total size was 1.67MB
N/A	User Timing marks and measures	