

## Performance Report for: <http://www.batmen-isolation.com/>

Report generated: Sun, Dec 10, 2023 1:00 AM +0100 (via API)  
 Test Server Location: London, UK  
 Using: Chrome 117.0.0.0, Lighthouse 11.0.0  
 Analysis options: Adblock Plus

<b>A</b>	Performance <b>98%</b>	Structure <b>92%</b>	L. Contentful Paint <b>907ms</b>	T. Blocking Time <b>0ms</b>	C. Layout Shift <b>0</b>
----------	---------------------------	-------------------------	-------------------------------------	--------------------------------	-----------------------------

### Top Issues

IMPACT	AUDIT	
Med	Use explicit width and height on image elements	CLS 4 images found
Med-Low	Serve static assets with an efficient cache policy	Potential savings of 148KB
Med-Low	Use a Content Delivery Network (CDN)	12 resources found
Low	Allow back/forward cache restoration	1 failure reason
Low	Properly size images	Potential savings of 1.21MB

### Page Details



Total Page Size - 1.66MB



Total Page Requests - 41



HTML JS CSS IMG Video Font Other

### How does this affect me?

Today's web user expects a fast and seamless website experience. Delivering that fast experience can result in increased visits, conversions and overall happiness.

As if you didn't need more incentive, **Google has announced that they are using page speed in their ranking algorithm.**

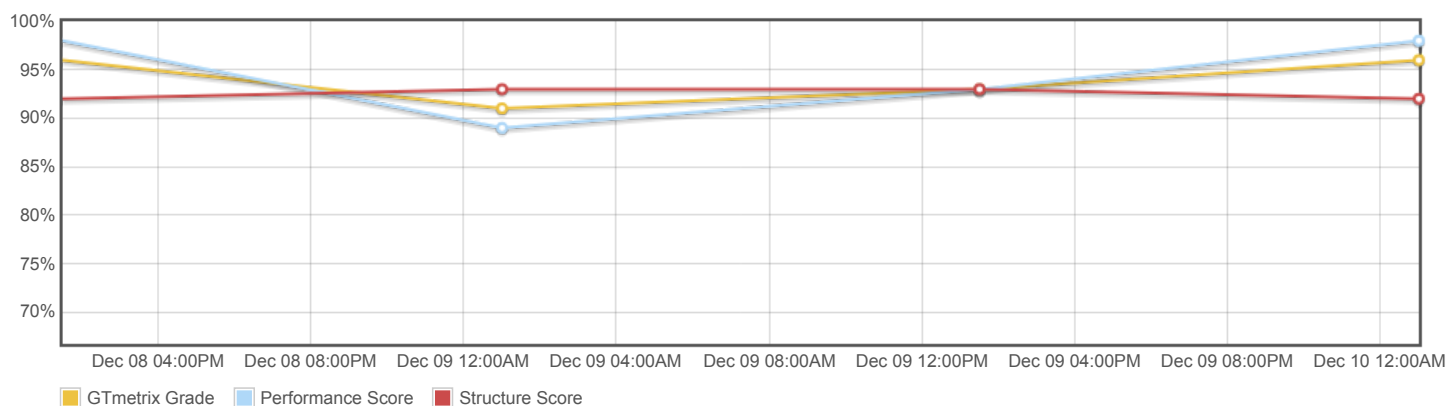
### About GTmetrix

**CARBON60**  
THE MANAGED CLOUD COMPANY

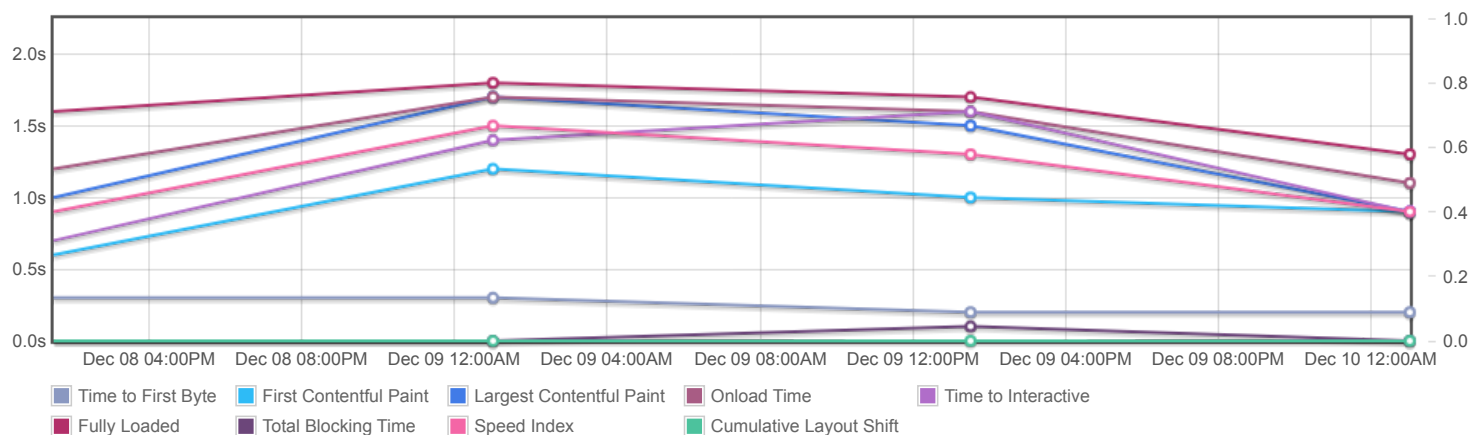
GTmetrix is developed by the good folks at **Carbon60**, a Canadian hosting company with over 27 years experience in web technology.

<https://carbon60.com/>

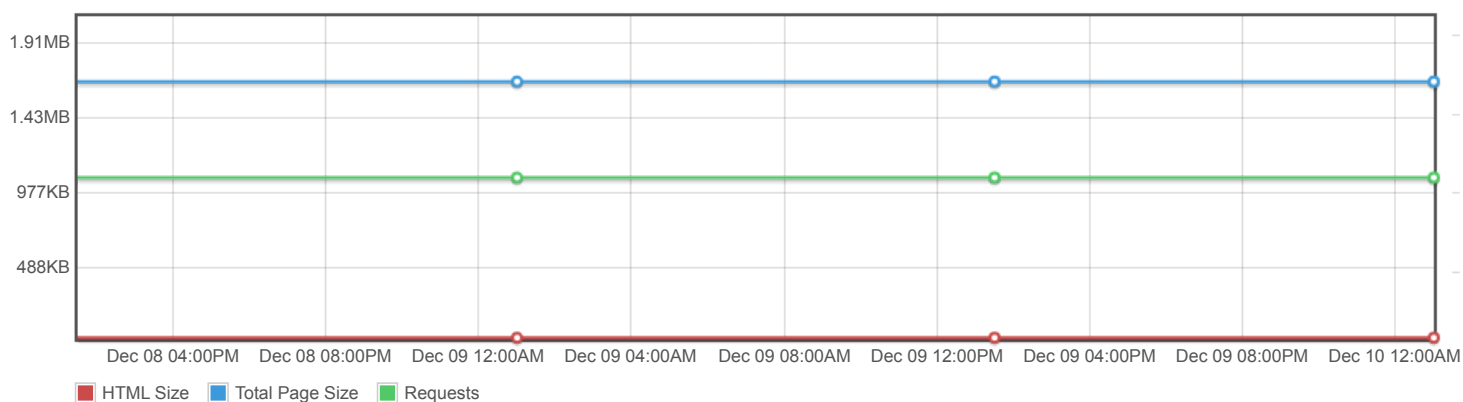
## Page scores



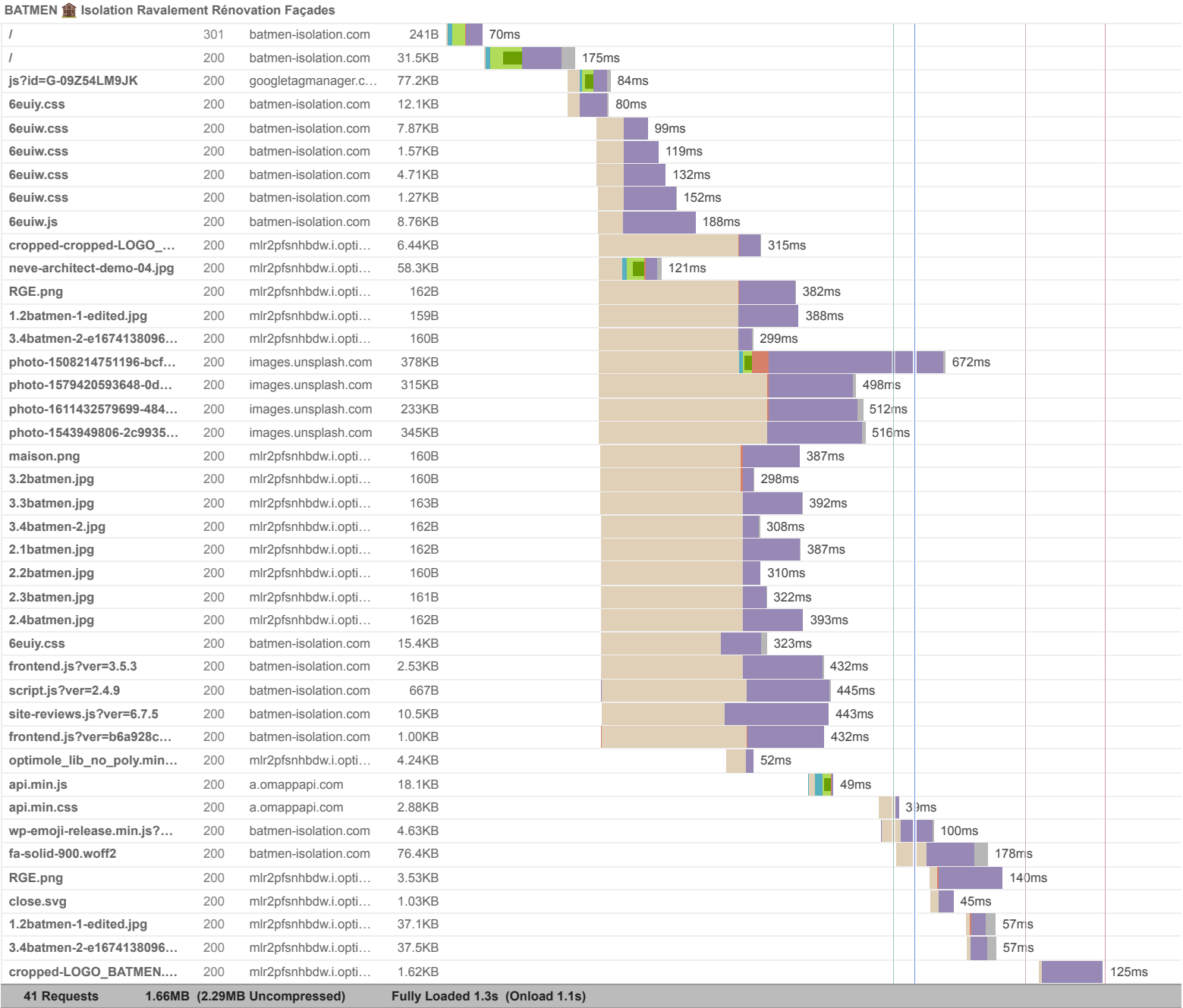
## Page metrics

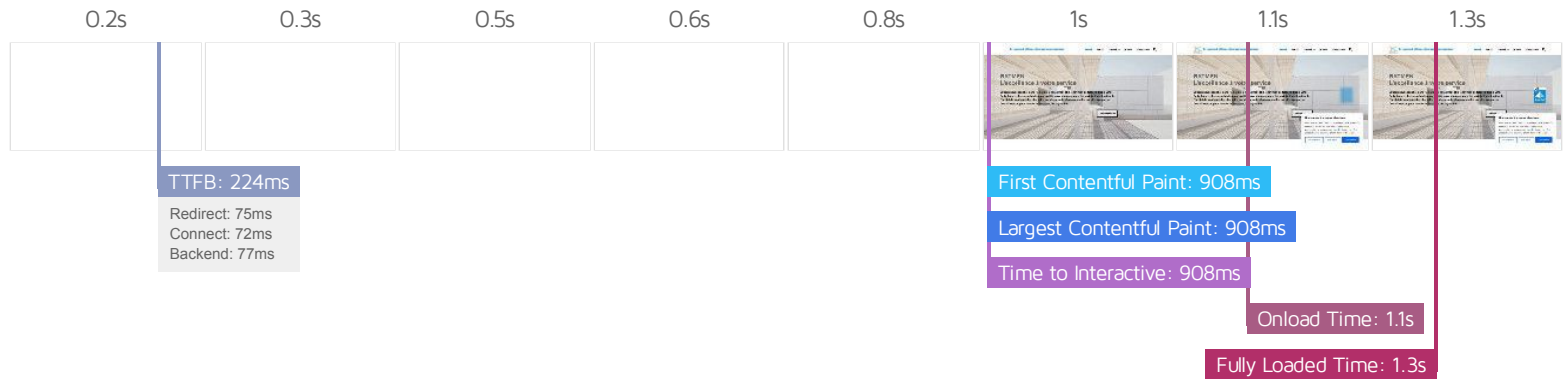


## Page sizes and request counts



The waterfall chart displays the loading behaviour of your site in your selected browser. It can be used to discover simple issues such as 404's or more complex issues such as external resources blocking page rendering.





## Performance Metrics

<b>First Contentful Paint</b> How quickly content like text or images are painted onto your page. A good user experience is 0.9s or less.	Good - Nothing to do here <b>907ms</b>	<b>Time to Interactive</b> How long it takes for your page to become fully interactive. A good user experience is 2.5s or less.	Good - Nothing to do here <b>907ms</b>
<b>Speed Index</b> How quickly the contents of your page are visibly populated. A good user experience is 1.3s or less.	Good - Nothing to do here <b>892ms</b>	<b>Total Blocking Time</b> How much time is blocked by scripts during your page loading process. A good user experience is 150ms or less.	Good - Nothing to do here <b>0ms</b>
<b>Largest Contentful Paint</b> How long it takes for the largest element of content (e.g. a hero image) to be painted on your page. A good user experience is 1.2s or less.	Good - Nothing to do here <b>907ms</b>	<b>Cumulative Layout Shift</b> How much your page's layout shifts as it loads. A good user experience is a score of 0.1 or less.	Good - Nothing to do here <b>0</b>

## Browser Timings

Redirect	75ms	Connect	72ms	Backend	77ms
TTFB	224ms	DOM Int.	843ms	DOM Loaded	866ms
First Paint	908ms	Onload	1.1s	Fully Loaded	1.3s

IMPACT	AUDIT	
Med	Use explicit width and height on image elements <small>CLS</small>	4 images found
Med-Low	Serve static assets with an efficient cache policy	Potential savings of 148KB
Med-Low	Use a Content Delivery Network (CDN)	12 resources found
Low	Allow back/forward cache restoration	1 failure reason
Low	Properly size images	Potential savings of 1.21MB
Low	Avoid an excessive DOM size <small>TBT</small>	429 elements
Low	Avoid enormous network payloads <small>LCP</small>	Total size was 1.67MB
Low	Avoid multiple page redirects <small>FCP</small> <small>LCP</small>	Potential savings of 73ms
Low	Avoid long main-thread tasks <small>TBT</small>	1 long task found
Low	Reduce JavaScript execution time <small>TBT</small>	109ms spent executing JavaScript
Low	Reduce unused CSS <small>FCP</small> <small>LCP</small>	Potential savings of 26.6KB
Low	Serve images in next-gen formats	Potential savings of 670KB
Low	Avoid non-composited animations <small>CLS</small>	4 animated elements found
Low	Minify JavaScript <small>FCP</small> <small>LCP</small>	Potential savings of 12.0KB
Low	Avoid chaining critical requests <small>FCP</small> <small>LCP</small>	8 chains found
Low	Reduce unused JavaScript <small>LCP</small>	Potential savings of 38.1KB
N/A	Largest Contentful Paint element <small>LCP</small>	910 ms
N/A	Eliminate render-blocking resources <small>FCP</small> <small>LCP</small>	Potential savings of 11ms
N/A	Reduce initial server response time <small>FCP</small> <small>LCP</small>	Root document took 76ms
N/A	Avoid serving legacy JavaScript to modern browsers <small>TBT</small>	Potential savings of 8.51KB
N/A	Minimize main-thread work <small>TBT</small>	Main-thread busy for 775ms
N/A	Reduce the impact of third-party code <small>TBT</small>	Total size was 1.49MB
N/A	Avoid large layout shifts <small>CLS</small>	

